



215 S. CENTER STREET

Type: Lease

215 S. CENTER STREET
ROYAL OAK, MI
OAKLAND COUNTY

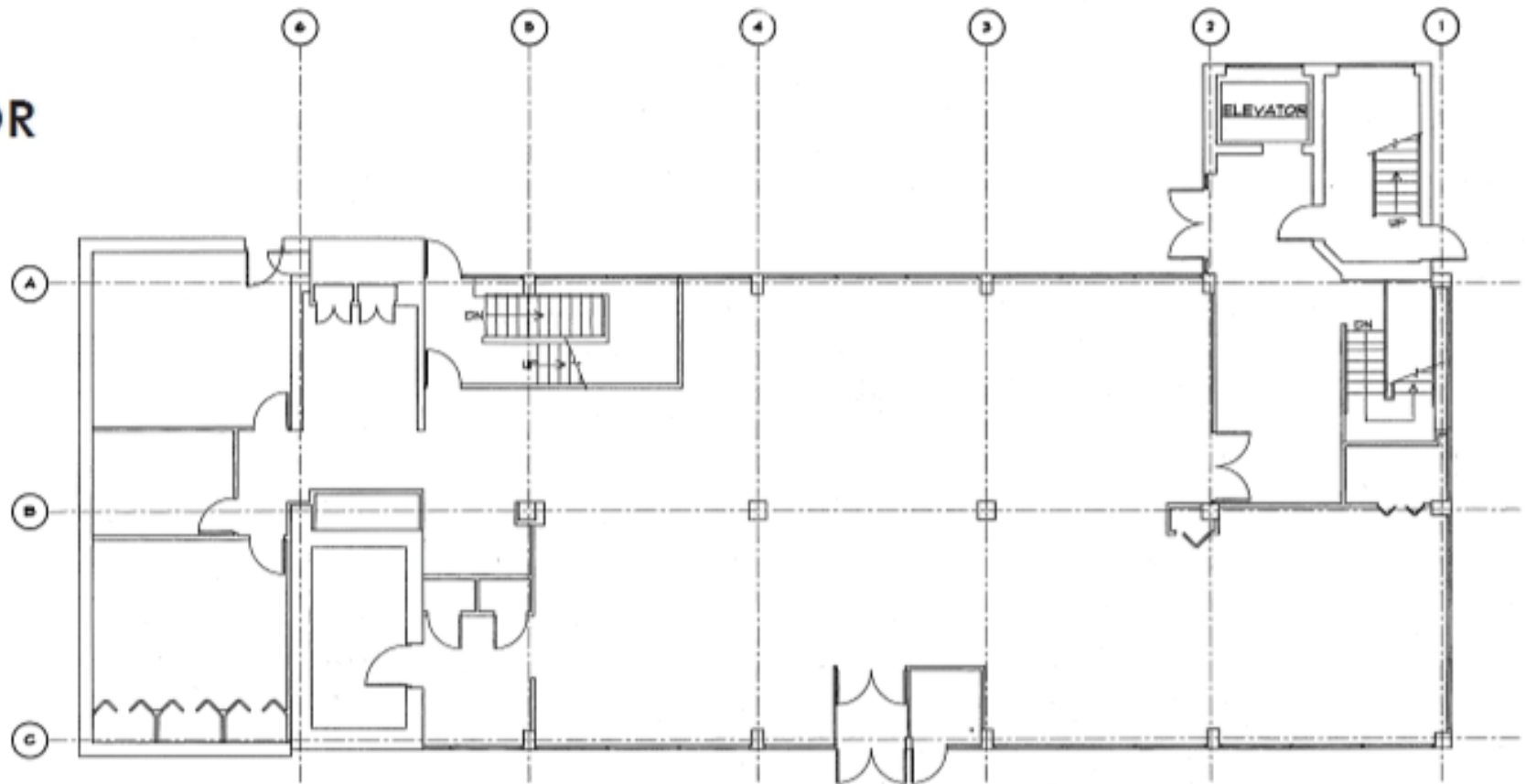
PROPERTY TYPE:	Freestanding
DATE AVAILABLE:	Immediately
RENT:	1 st Floor - \$25.00/NNN Lower Level – \$9.00/MG
NNN EXPENSE:	Contact Broker for details
GLA:	18,395 SF
AVAILABLE SPACE:	1 st Floor – 2,643-5,287 SF Lower Level – 4,108 SF
ZONING:	B-1
TRAFFIC COUNT:	Center Street = 4,100 (08) 2 nd Street = 13,500 (08)
CONTACT:	Anthony Vitale avitale@landmarkcres.com (248) 488-2620

DESCRIPTION:

215 S. Center Street boasts a premiere Downtown Royal Oak location on Center Street at 2nd Street, just 50 yards from Main Street. It is in close proximity to many downtown Royal Oak dining, retail, and entertainment establishments. Royal Oak is Metro Detroit's most central location, minutes from I-696, I-75, and M-1 (Woodward Avenue). Royal Oak is southeast Michigan's most walkable community; however, the property offers onsite parking with metered and city deck parking across the street.

Radius:	1 Mile	3 Mile	5 Mile
Pop. Density:	17,046	149,085	364,799
Avg. HH Income:	\$94,591	\$74,734	\$68,038

FIRST FLOOR
5,287 SF

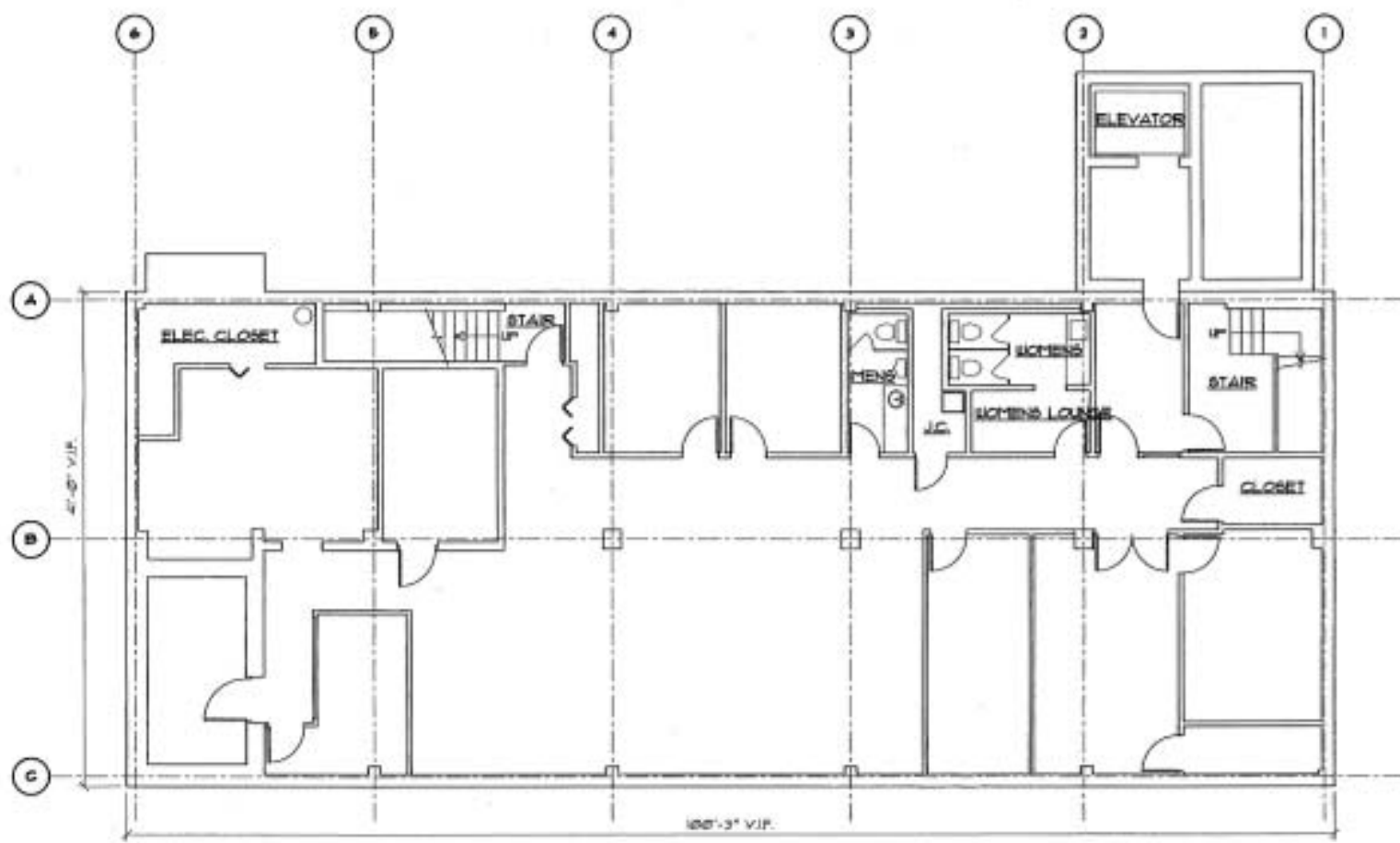


EXISTING FIRST LEVEL PLAN

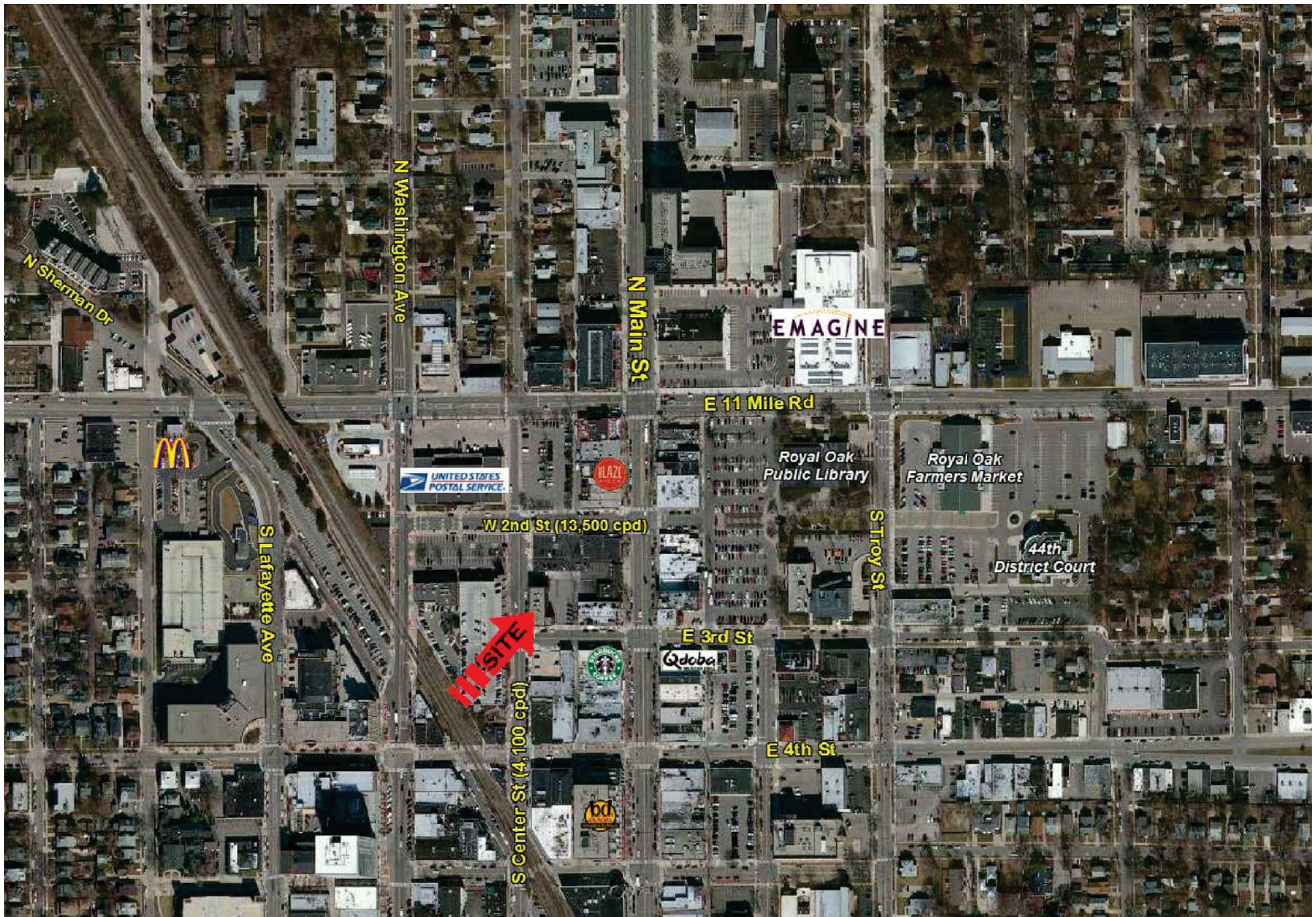
SCALE: 1/8" = 1'-0"
FOR REFERENCE ONLY



LOWER LEVEL
4,108 SF



EXISTING BASEMENT LEVEL PLAN
SCALE: 1/4" = 1'-0"
FOR REFERENCE ONLY



ROYAL OAK, MI

LANDMARK
COMMERCIAL ▲ REAL ESTATE ▲ SERVICES

The information and images contained herein are from sources deemed reliable. However, Landmark Commercial Real Estate Services, Inc. makes no representation whatsoever as to their accuracy or authenticity. Information and images, whether in whole or in part, are defined to include, but not be limited to: aerial photographs, highways, logos, traffic counts, markers, labels, names, demographic data, site plans, and architectural renderings. Images shown may be modified for illustrative purposes. Images may be out-of-date and not current. For more information about our company please visit our website at www.landmarkres.com

FULL PROFILE

2000-2010 Census, 2016 Estimates with 2021 Projections

Calculated using Weighted Block Centroid from Block Groups



Lat/Lon: 42.4884/-83.1452

RF1

215 S Center St

Royal Oak, MI 48067-3870

1 mi radius 3 mi radius 5 mi radius

	1 mi radius	3 mi radius	5 mi radius	
POPULATION	2016 Estimated Population	17,046	149,085	364,799
	2021 Projected Population	17,436	153,356	373,597
	2010 Census Population	16,789	145,744	359,449
	2000 Census Population	16,835	155,783	392,419
	Projected Annual Growth 2016 to 2021	0.5%	0.6%	0.5%
	Historical Annual Growth 2000 to 2016	0.1%	-0.3%	-0.4%
HOUSEHOLDS	2016 Estimated Households	8,773	68,853	161,420
	2021 Projected Households	9,163	72,371	168,969
	2010 Census Households	8,403	65,577	154,456
	2000 Census Households	8,276	67,800	163,922
	Projected Annual Growth 2016 to 2021	0.9%	1.0%	0.9%
	Historical Annual Growth 2000 to 2016	0.4%	0.1%	-0.1%
AGE	2016 Est. Population Under 10 Years	9.4%	10.6%	10.8%
	2016 Est. Population 10 to 19 Years	7.2%	10.2%	11.0%
	2016 Est. Population 20 to 29 Years	20.0%	15.6%	14.3%
	2016 Est. Population 30 to 44 Years	24.1%	22.0%	20.0%
	2016 Est. Population 45 to 59 Years	20.0%	20.7%	20.5%
	2016 Est. Population 60 to 74 Years	13.2%	14.0%	15.6%
	2016 Est. Population 75 Years or Over	6.1%	6.9%	7.8%
	2016 Est. Median Age	36.5	37.9	39.6
MARITAL STATUS & GENDER	2016 Est. Male Population	51.0%	48.7%	47.6%
	2016 Est. Female Population	49.0%	51.3%	52.4%
	2016 Est. Never Married	38.5%	36.1%	36.2%
	2016 Est. Now Married	42.7%	43.2%	39.9%
	2016 Est. Separated or Divorced	14.0%	14.8%	16.5%
	2016 Est. Widowed	4.8%	5.9%	7.3%
INCOME	2016 Est. HH Income \$200,000 or More	9.0%	5.0%	4.2%
	2016 Est. HH Income \$150,000 to \$199,999	8.0%	5.7%	4.7%
	2016 Est. HH Income \$100,000 to \$149,999	19.0%	15.1%	13.2%
	2016 Est. HH Income \$75,000 to \$99,999	14.3%	14.0%	12.4%
	2016 Est. HH Income \$50,000 to \$74,999	16.5%	18.0%	17.8%
	2016 Est. HH Income \$35,000 to \$49,999	11.2%	13.2%	13.8%
	2016 Est. HH Income \$25,000 to \$34,999	6.1%	9.1%	10.2%
	2016 Est. HH Income \$15,000 to \$24,999	8.1%	9.8%	11.2%
	2016 Est. HH Income Under \$15,000	7.8%	10.0%	12.5%
	2016 Est. Average Household Income	\$94,591	\$74,734	\$68,038
	2016 Est. Median Household Income	\$75,125	\$62,868	\$56,685
	2016 Est. Per Capita Income	\$48,760	\$34,535	\$30,148
2016 Est. Total Businesses	1,486	7,208	20,720	
2016 Est. Total Employees	10,303	74,191	215,192	

This report was produced using data from private and government sources deemed to be reliable. The information herein is provided without representation or warranty.

FULL PROFILE

2000-2010 Census, 2016 Estimates with 2021 Projections

Calculated using Weighted Block Centroid from Block Groups



Lat/Lon: 42.4884/-83.1452

RF1

215 S Center St

Royal Oak, MI 48067-3870

1 mi radius 3 mi radius 5 mi radius

	1 mi radius	3 mi radius	5 mi radius	
RACE	2016 Est. White	90.4%	80.0%	60.9%
	2016 Est. Black	3.7%	14.0%	31.8%
	2016 Est. Asian or Pacific Islander	3.1%	2.7%	4.0%
	2016 Est. American Indian or Alaska Native	0.2%	0.3%	0.3%
	2016 Est. Other Races	2.6%	3.0%	3.0%
HISPANIC	2016 Est. Hispanic Population	448	3,746	8,225
	2016 Est. Hispanic Population	2.6%	2.5%	2.3%
	2021 Proj. Hispanic Population	3.4%	3.2%	2.9%
	2010 Hispanic Population	2.3%	2.2%	1.9%
EDUCATION (Adults 25 or Older)	2016 Est. Adult Population (25 Years or Over)	13,002	108,186	261,343
	2016 Est. Elementary (Grade Level 0 to 8)	0.8%	2.3%	3.1%
	2016 Est. Some High School (Grade Level 9 to 11)	3.3%	4.4%	6.3%
	2016 Est. High School Graduate	13.7%	21.4%	24.6%
	2016 Est. Some College	18.5%	22.5%	22.9%
	2016 Est. Associate Degree Only	5.7%	7.5%	7.9%
	2016 Est. Bachelor Degree Only	32.6%	25.0%	20.7%
	2016 Est. Graduate Degree	25.4%	16.9%	14.6%
HOUSING	2016 Est. Total Housing Units	9,104	71,798	171,994
	2016 Est. Owner-Occupied	59.2%	65.7%	62.1%
	2016 Est. Renter-Occupied	37.2%	30.2%	31.7%
	2016 Est. Vacant Housing	3.6%	4.1%	6.1%
HOMES BUILT BY YEAR	2010 Homes Built 2005 or later	3.1%	1.6%	2.0%
	2010 Homes Built 2000 to 2004	4.5%	3.0%	3.3%
	2010 Homes Built 1990 to 1999	6.8%	5.8%	6.1%
	2010 Homes Built 1980 to 1989	4.9%	5.4%	5.9%
	2010 Homes Built 1970 to 1979	9.1%	10.0%	11.7%
	2010 Homes Built 1960 to 1969	8.5%	12.6%	15.9%
	2010 Homes Built 1950 to 1959	15.9%	28.7%	26.3%
	2010 Homes Built Before 1949	47.1%	33.0%	28.8%
HOME VALUES	2010 Home Value \$1,000,000 or More	0.6%	0.5%	0.4%
	2010 Home Value \$500,000 to \$999,999	4.0%	1.6%	1.4%
	2010 Home Value \$400,000 to \$499,999	2.5%	1.4%	1.2%
	2010 Home Value \$300,000 to \$399,999	7.0%	4.4%	3.9%
	2010 Home Value \$200,000 to \$299,999	21.5%	14.6%	13.3%
	2010 Home Value \$150,000 to \$199,999	25.5%	22.3%	20.6%
	2010 Home Value \$100,000 to \$149,999	16.4%	24.8%	24.1%
	2010 Home Value \$50,000 to \$99,999	15.2%	21.1%	23.6%
	2010 Home Value \$25,000 to \$49,999	4.1%	5.3%	6.5%
	2010 Home Value Under \$25,000	3.1%	4.0%	4.9%
	2010 Median Home Value	\$179,281	\$145,981	\$136,273
2010 Median Rent	\$730	\$709	\$702	

This report was produced using data from private and government sources deemed to be reliable. The information herein is provided without representation or warranty.

FULL PROFILE

2000-2010 Census, 2016 Estimates with 2021 Projections

Calculated using Weighted Block Centroid from Block Groups



Lat/Lon: 42.4884/-83.1452

RF1

215 S Center St

Royal Oak, MI 48067-3870

1 mi radius 3 mi radius 5 mi radius

	1 mi radius	3 mi radius	5 mi radius	
LABOR FORCE	2016 Est. Labor Population Age 16 Years or Over	14,727	124,446	302,027
	2016 Est. Civilian Employed	75.0%	67.5%	60.3%
	2016 Est. Civilian Unemployed	2.0%	3.0%	3.7%
	2016 Est. in Armed Forces	0.1%	0.1%	0.1%
	2016 Est. not in Labor Force	22.8%	29.4%	35.9%
	2016 Labor Force Males	50.8%	48.1%	46.9%
	2016 Labor Force Females	49.2%	51.9%	53.1%
OCCUPATION	2010 Occupation: Population Age 16 Years or Over	9,798	72,422	158,819
	2010 Mgmt, Business, & Financial Operations	20.1%	15.9%	15.2%
	2010 Professional, Related	32.8%	28.0%	24.9%
	2010 Service	12.3%	16.0%	17.6%
	2010 Sales, Office	23.0%	25.2%	25.9%
	2010 Farming, Fishing, Forestry	0.3%	0.1%	0.1%
	2010 Construction, Extraction, Maintenance	3.8%	5.3%	5.6%
	2010 Production, Transport, Material Moving	7.8%	9.5%	10.8%
	2010 White Collar Workers	75.9%	69.1%	65.9%
	2010 Blue Collar Workers	24.1%	30.9%	34.1%
TRANSPORTATION TO WORK	2010 Drive to Work Alone	87.5%	85.8%	84.7%
	2010 Drive to Work in Carpool	5.0%	7.1%	7.5%
	2010 Travel to Work by Public Transportation	0.6%	1.1%	2.0%
	2010 Drive to Work on Motorcycle	0.1%	0.1%	0.1%
	2010 Walk or Bicycle to Work	3.0%	2.3%	2.0%
	2010 Other Means	0.3%	0.4%	0.5%
	2010 Work at Home	3.5%	3.2%	3.2%
TRAVEL TIME	2010 Travel to Work in 14 Minutes or Less	23.4%	24.6%	23.7%
	2010 Travel to Work in 15 to 29 Minutes	47.5%	44.8%	44.3%
	2010 Travel to Work in 30 to 59 Minutes	26.7%	27.5%	28.5%
	2010 Travel to Work in 60 Minutes or More	2.4%	3.1%	3.4%
	2010 Average Travel Time to Work	21.2	21.4	21.9
CONSUMER EXPENDITURE	2016 Est. Total Household Expenditure	\$596 M	\$3.94 B	\$8.63 B
	2016 Est. Apparel	\$20.8 M	\$137 M	\$300 M
	2016 Est. Contributions, Gifts	\$43.9 M	\$272 M	\$583 M
	2016 Est. Education, Reading	\$25.3 M	\$155 M	\$333 M
	2016 Est. Entertainment	\$33.6 M	\$221 M	\$482 M
	2016 Est. Food, Beverages, Tobacco	\$88.9 M	\$599 M	\$1.32 B
	2016 Est. Furnishings, Equipment	\$21.0 M	\$136 M	\$295 M
	2016 Est. Health Care, Insurance	\$51.1 M	\$345 M	\$762 M
	2016 Est. Household Operations, Shelter, Utilities	\$185 M	\$1.22 B	\$2.68 B
	2016 Est. Miscellaneous Expenses	\$8.72 M	\$58.2 M	\$128 M
	2016 Est. Personal Care	\$7.71 M	\$51.1 M	\$112 M
	2016 Est. Transportation	\$110 M	\$744 M	\$1.63 B

This report was produced using data from private and government sources deemed to be reliable. The information herein is provided without representation or warranty.