

FOR SALE
VACANT LAND

375 W. ELLSWORTH RD, ANN ARBOR, MI 48108



PROPERTY DETAILS

\$3,750,000

5.7 AC

SALES PRICE

LOT SIZE

LOCATION: 375 W. Ellsworth Rd
Ann Arbor, MI 48108

PROPERTY TYPE: Vacant Land

SALES PRICE: \$3,750,000

LOT SIZE: 5.7 AC

ZONING: Commercial

TRAFFIC COUNT: W. Ellsworth Rd (16,111 PD)
State St (14,302 CPD)

HIGHLIGHTS

- Straight shot down State Street
- Approximately 3.5 Mile to downtown Ann Arbor
- 1,200 Feet east of Costco & adjacent to Speedway

EXCLUSIVELY LISTED BY:



**MAX J.
GOLDMAN**
Senior Director
mgoldman@landmarkcres.com
248 488 2620

MICRO AERIAL



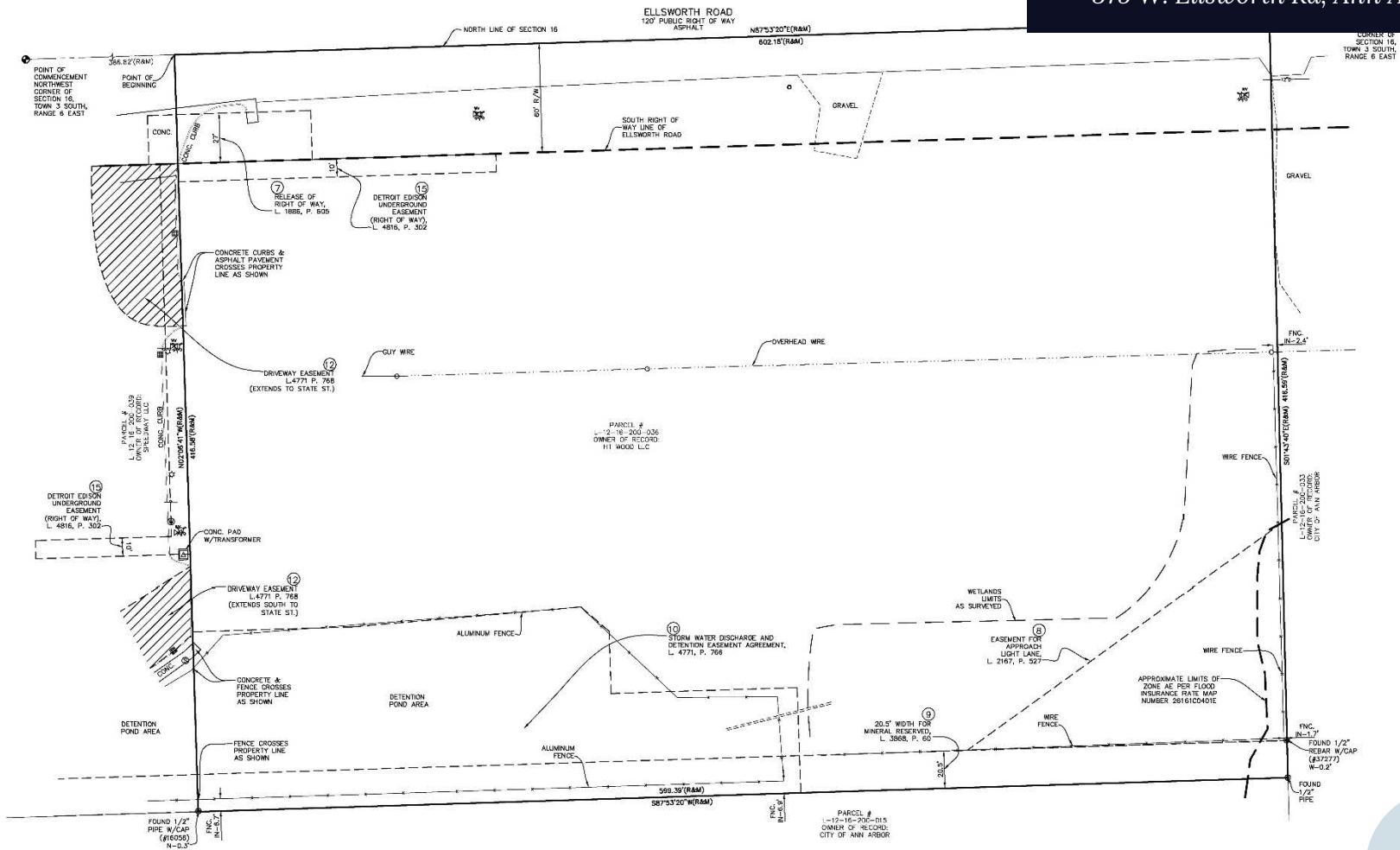
ANN ARBOR
MUNICIPAL
AIRPORT

MACRO AERIAL

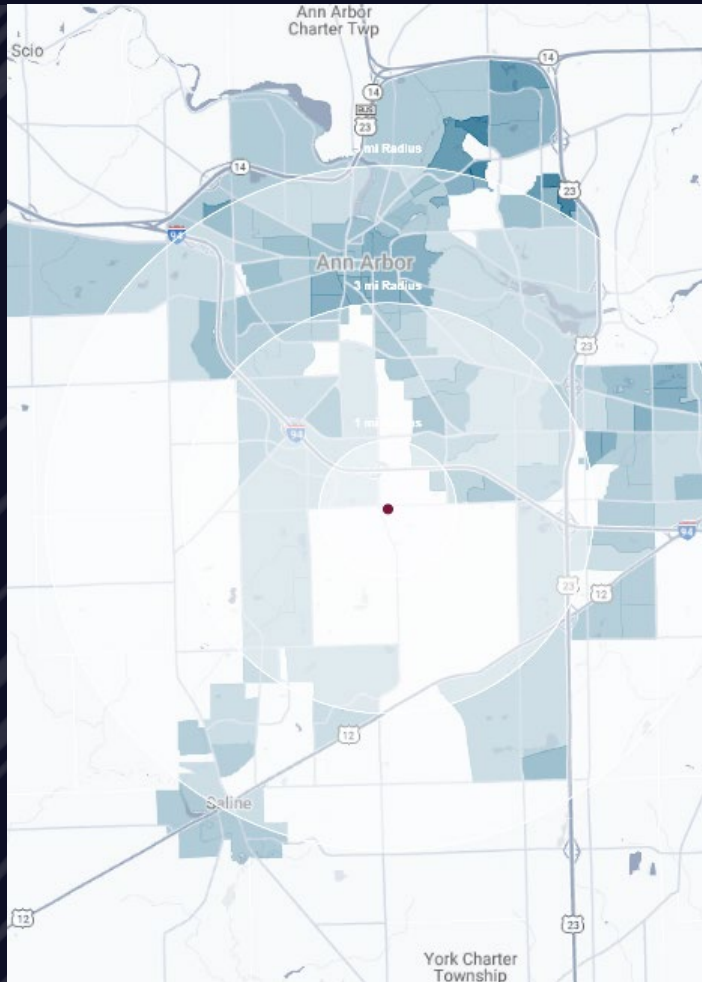


ALTA SURVEY

VACANT LAND 375 W. Ellsworth Rd, Ann Arbor, MI



DEMOGRAPHICS



VACANT LAND

375 W. Ellsworth Rd, Ann Arbor, MI

DEMOGRAPHICS

POPULATION

	1 MILE	3 MILE	5 MILE
2023 Estimated Population	2,695	59,460	169,572
2028 Projected Population	2,969	61,550	172,021
2020 Census Population	2,354	59,765	169,898
2010 Census Population	2,217	55,970	155,158
Projected Annual Growth 2023 to 2028	2.0%	0.7%	0.3%
Historical Annual Growth 2010 to 2023	1.7%	0.5%	0.7%

HOUSEHOLDS

2023 Estimated Households	1,371	26,024	69,292
2028 Projected Households	1,574	27,606	71,877
2020 Census Households	1,162	25,779	68,515
2010 Census Households	1,085	23,998	63,468
Projected Annual Growth 2023 to 2028	3.0%	1.2%	0.7%
Historical Annual Growth 2010 to 2023	2.0%	0.6%	0.7%

RACE

2023 Est. White	61.4%	70.4%	63.1%
2023 Est. Black	14.7%	8.4%	9.8%
2023 Est. Asian or Pacific Islander	13.3%	13.6%	20.1%
2023 Est. American Indian or Alaska Native	0.2%	0.2%	0.2%
2023 Est. Other Races	10.5%	7.4%	6.8%

INCOME

2023 Est. Average Household Income	\$89,640	\$138,862	\$128,933
2023 Est. Median Household Income	\$81,075	\$108,340	\$97,776
2023 Est. Per Capita Income	\$45,609	\$60,896	\$54,108

BUSINESS

2023 Est. Total Businesses	612	3,147	7,471
2023 Est. Total Employees	13,741	43,896	96,293

CONTACT US



**MAX J.
GOLDMAN**

Senior Director

mgoldman@landmarkcres.com

248 488 2620

LANDMARK
COMMERCIAL ▲ REAL ESTATE ▲ SERVICES

30500 Northwestern Hwy, Suite 200
Farmington Hills, MI 48334
248.488.2620
landmarkcres.com

LANDMARK COMMERCIAL REAL ESTATE SERVICES – Licensed Real Estate Brokers. The information above has been obtained from sources believed reliable. While we do not doubt its accuracy, we have not verified it and make no guarantee, warranty or representation about it. It is your responsibility to independently confirm its accuracy and completeness. Any projections, opinions, assumptions or estimates are used for example only and do not represent the current or future performance of the property. The value of this transaction to you depends on tax and other factors which should be evaluated by your tax, financial and legal advisors. You and your advisors should conduct a careful, independent investigation of the property to determine to your satisfaction, the suitability of the property for your needs.