

FOR SALE/LEASE

FORMER BIG BOY RESTAURANT

500 N EUCLID AVE, BAY CITY, MI 48706



PROPERTY DETAILS

5,163 SF

BUILDING SIZE

1.23 AC

LOT SIZE

LOCATION:	500 N Euclid Ave Bay City, MI 48706
PROPERTY TYPE:	Restaurant
DATE AVAILABLE:	Immediately
BUILDING DIMENSIONS:	90' x 57' (Approximate)
LOT DIMENSIONS:	360' x 150'
AVAILABLE SPACE:	5,163 SF
ZONING:	C-28 Hwy Business
GLA:	5,163 SF
IMPROVEMENTS:	Fully built-out restaurant
TRAFFIC COUNTS:	N Euclid Ave (22,363 CPD) Midland St (12,896 CPD)

DESCRIPTION

- The subject site is a former freestanding restaurant located on the east side of North Euclid Avenue. The site features excellent frontage along North Euclid Avenue with 360 feet of frontage totaling approximately 1.23 acres.
- The site is surrounded by a dense residential population with over 10,000 people within a one-mile radius.

EXCLUSIVELY LISTED BY:



**GORDON S.
HYDE**

Senior Associate
ghyde@landmarkcres.com
248 488 2620



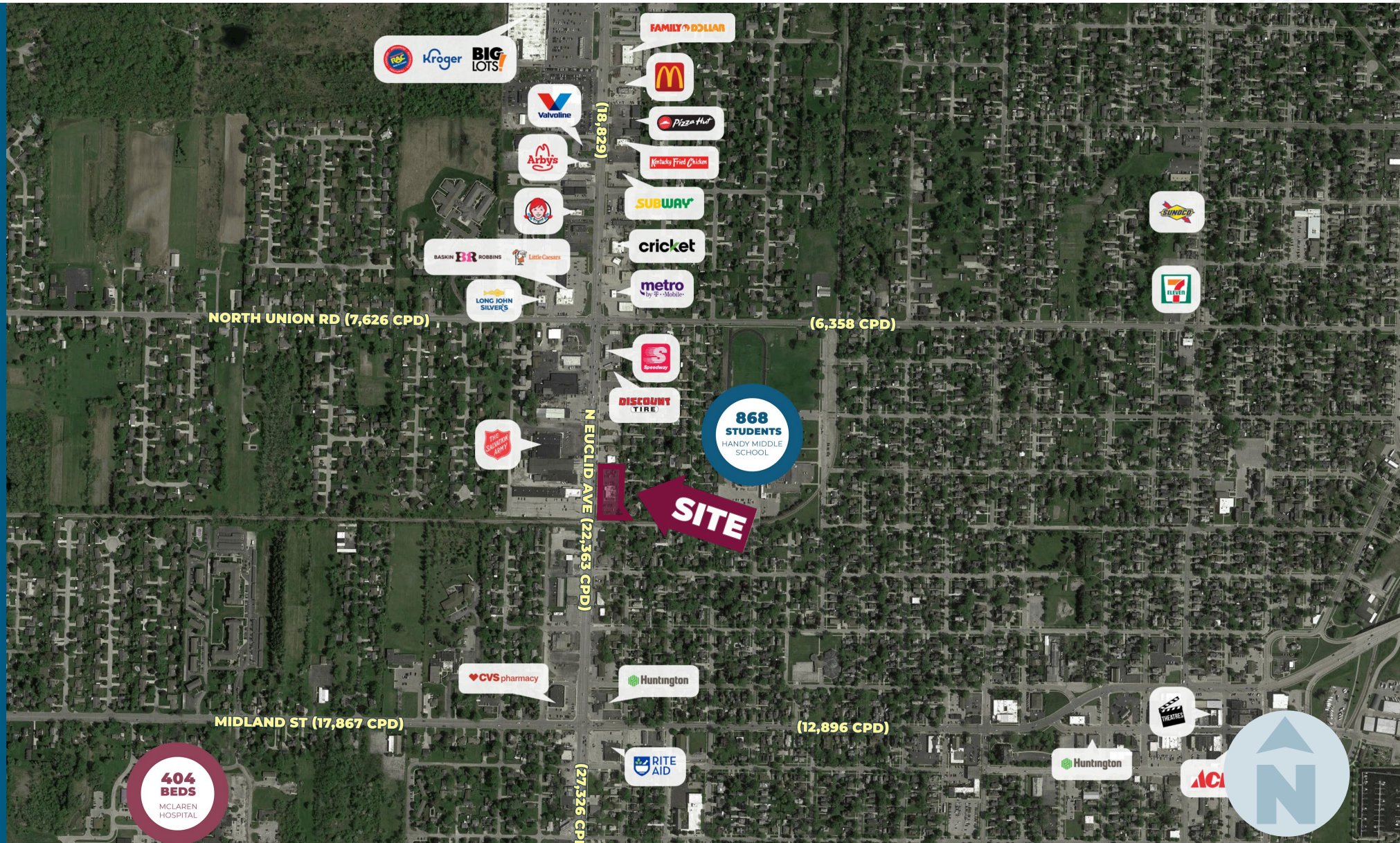
**MATTHEW D.
SWANTKO**

Principal
mswantko@landmarkcres.com
248 488 2620

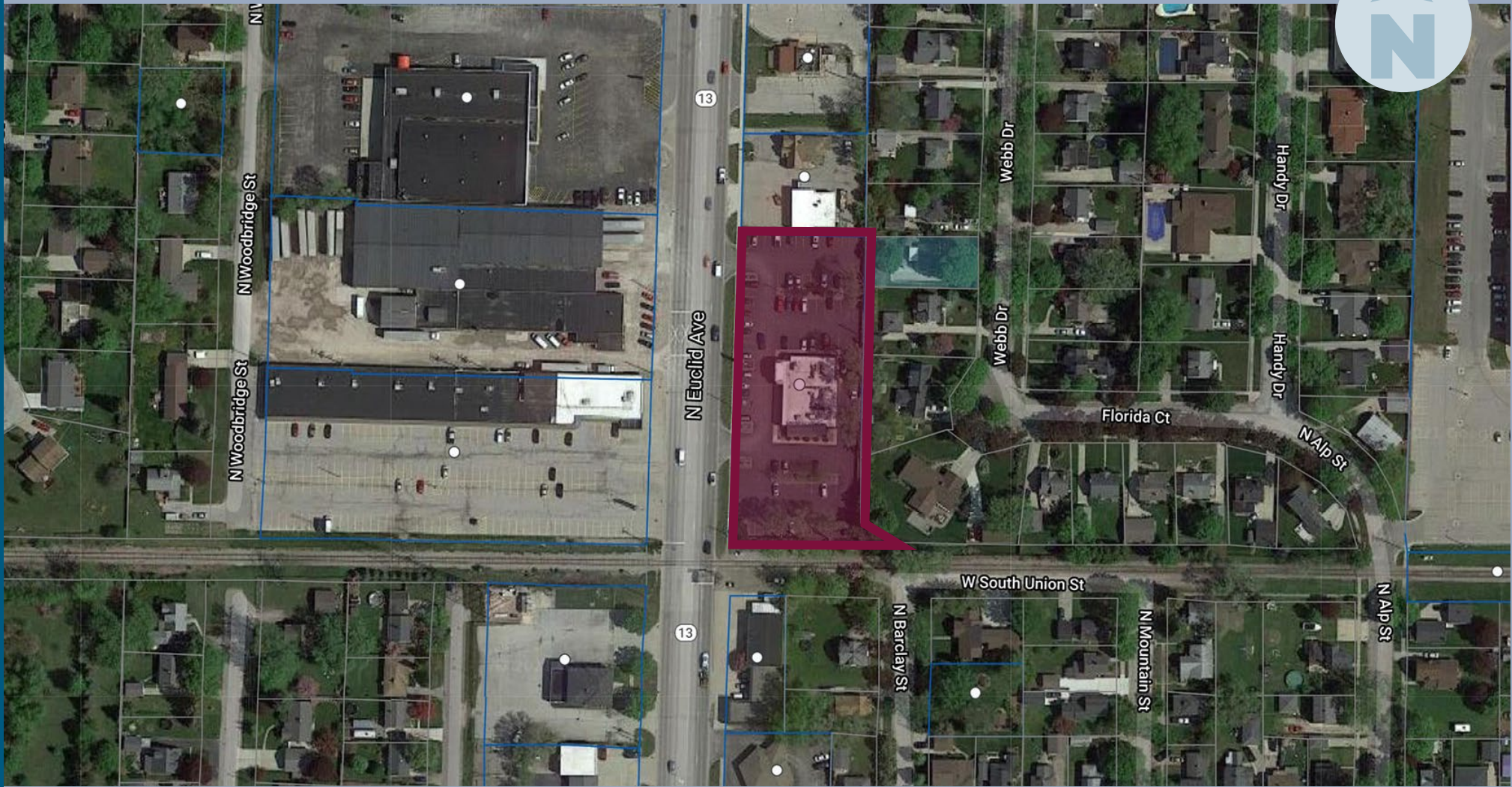
MICRO AERIAL



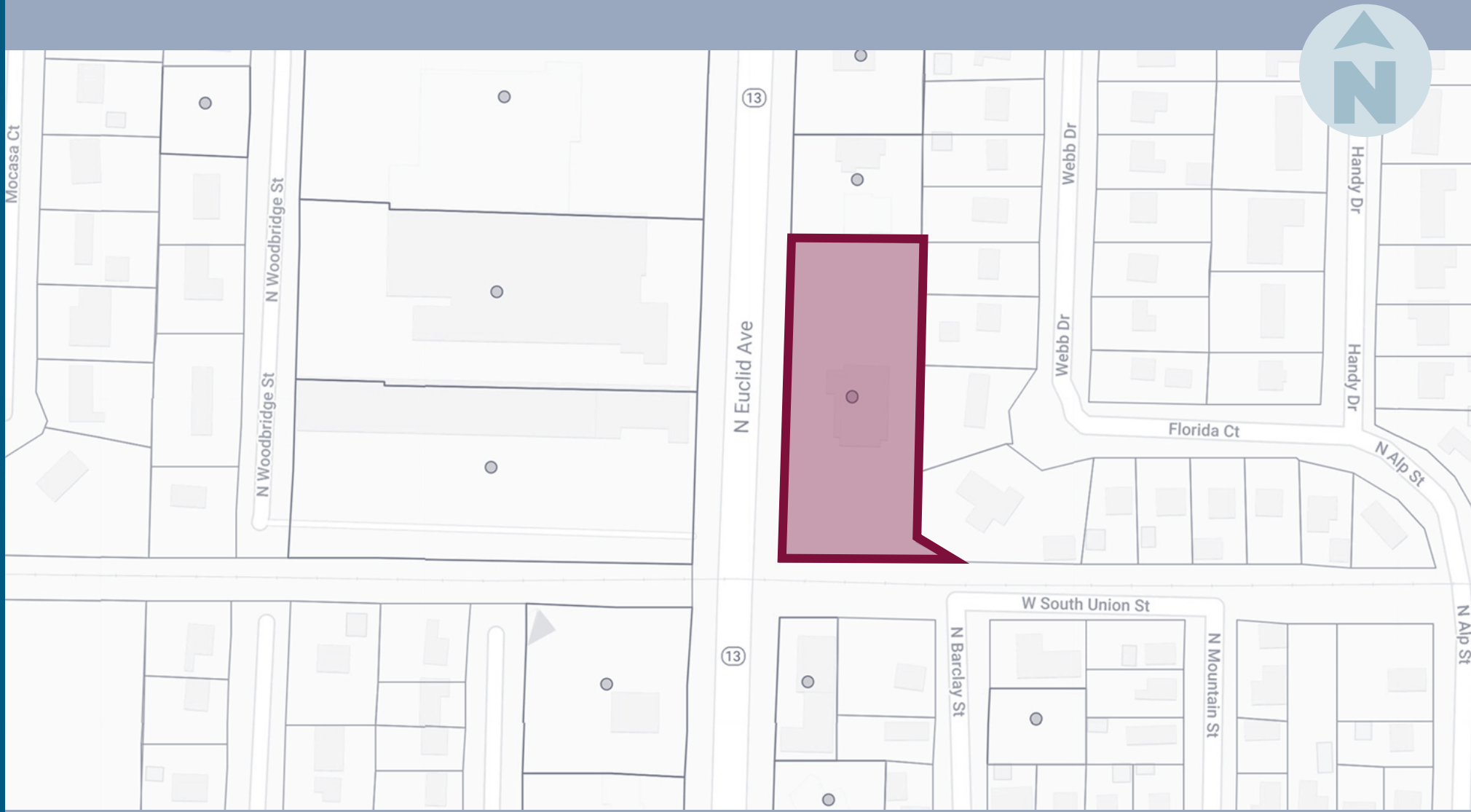
MACRO AERIAL



PLAT



PLAT



PICTURES



SIGNAGE | N EUCLID AVE



DEMOGRAPHICS



FORMER BIG BOY RESTAURANT

500 N Euclid Ave, Bay City, MI 48706

DEMOGRAPHICS

POPULATION

	1 MILE	3 MILE	5 MILE
2023 Estimated Population	9,779	47,171	68,378
2028 Projected Population	8,881	43,322	64,609
2020 Census Population	10,098	48,225	69,626
2010 Census Population	10,761	50,946	72,847
Projected Annual Growth 2023 to 2028	-1.8%	-1.6%	-1.1%
Historical Annual Growth 2010 to 2023	-0.7%	-0.6%	-0.5%

HOUSEHOLDS

2023 Estimated Households	4,277	20,286	29,804
2028 Projected Households	3,830	18,416	27,890
2020 Census Households	4,559	21,271	30,826
2010 Census Households	4,603	21,334	30,645
Projected Annual Growth 2023 to 2028	-2.1%	-1.8%	-1.3%
Historical Annual Growth 2010 to 2023	-0.5%	-0.4%	-0.2%

RACE

2023 Est. White	90.2%	89.1%	90.1%
2023 Est. Black	2.4%	3.3%	2.8%
2023 Est. Asian or Pacific Islander	1.1%	0.6%	0.7%
2023 Est. American Indian or Alaska Native	0.3%	0.3%	0.3%
2023 Est. Other Races	6.0%	6.6%	6.1%

INCOME

2023 Est. Average Household Income	\$75,081	\$80,425	\$82,995
2023 Est. Median Household Income	\$52,749	\$53,179	\$55,948
2023 Est. Per Capita Income	\$32,968	\$34,762	\$36,349

BUSINESS

2023 Est. Total Businesses	343	1,688	2,244
2023 Est. Total Employees	3,108	18,072	24,503

CONTACT US

GH

**GORDON S.
HYDE**

Senior Associate

ghyde@landmarkcres.com
248 488 2620

MS

**MATTHEW D.
SWANTKO**

Principal

mswantko@landmarkcres.com
248 488 2620

LANDMARK
COMMERCIAL ▲ REAL ESTATE ▲ SERVICES

30500 Northwestern Hwy, Suite 200
Farmington Hills, MI 48334
248.488.2620
landmarkcres.com

LANDMARK COMMERCIAL REAL ESTATE SERVICES – Licensed Real Estate Brokers. The information above has been obtained from sources believed reliable. While we do not doubt its accuracy, we have not verified it and make no guarantee, warranty or representation about it. It is your responsibility to independently confirm its accuracy and completeness. Any projections, opinions, assumptions or estimates are used for example only and do not represent the current or future performance of the property. The value of this transaction to you depends on tax and other factors which should be evaluated by your tax, financial and legal advisors. You and your advisors should conduct a careful, independent investigation of the property to determine to your satisfaction, the suitability of the property for your needs.