

FOR LEASE/SALE
VACANT COMMERCIAL LAND

SWC 22 MILE & ROMEO PLANK RD, MACOMB TWP, MI 48044



PROPERTY DETAILS

LOCATION:	SWC 22 Mile Rd & Romeo Plank Rd, Macomb Twp, MI 48044
PROPERTY TYPE:	Vacant Land
SALES PRICE:	\$300,000.00
RENT:	\$25,000.00/YR (Land Lease)
LOT SIZE:	1.16 AC
ZONING:	C-2
TRAFFIC COUNT:	22 Mile Rd (14,087 CPD) Romeo Plank (19,557 CPD)

\$300,000.00

SALES PRICE

\$25,000.00/YR (Ground Lease)

RENT

EXCLUSIVELY LISTED BY:



**MICHAEL R.
LIPPITT**
Principal
mlippitt@landmarkcres.com
248 488 2620

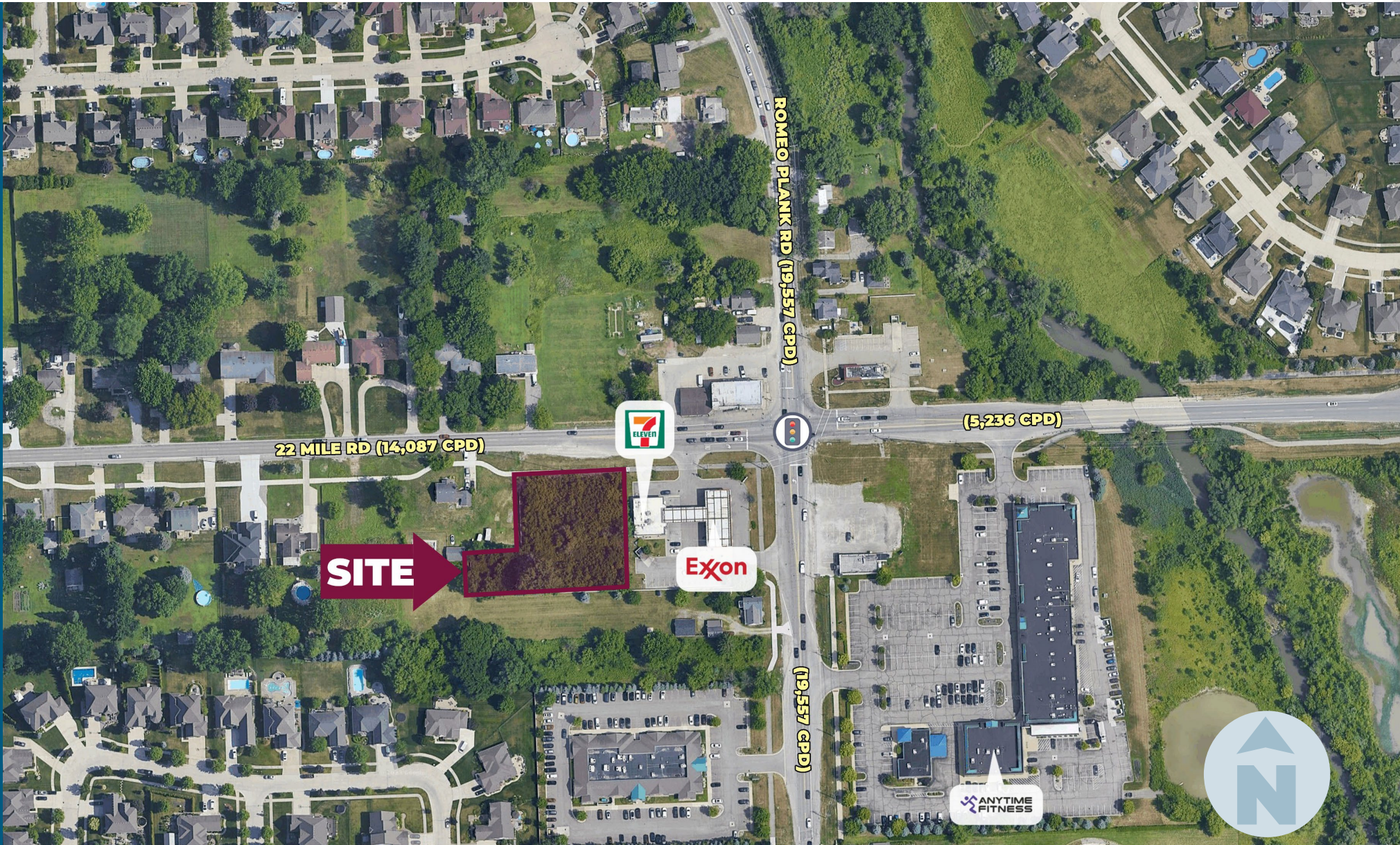


**BRUCE A.
SIMON**
Principal
bsimon@landmarkcres.com
248 488 2620

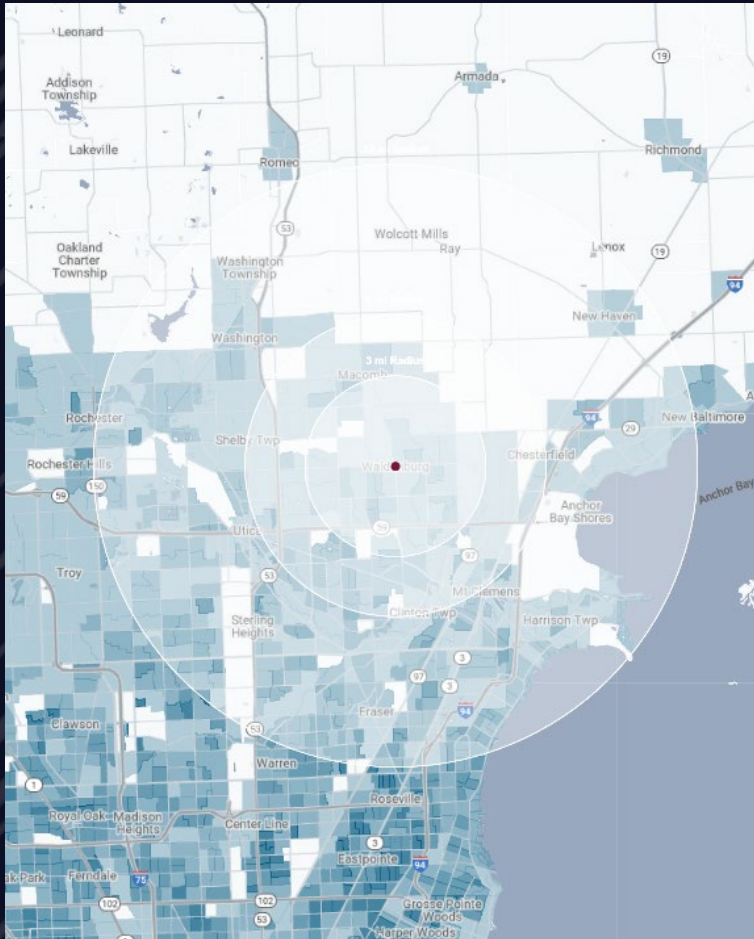
HIGHLIGHTS

- Adjacent to 7-Eleven/Citgo with access and signage to both Romeo Plank Road and 22 Mile Road. Sale or lease opportunity to build up to 6,000 SF. Pylon signage available at the immediate corner of Romeo Plank and 22 Mile Road shared with 7-Eleven.

MICRO AERIAL



DEMOGRAPHICS



VACANT COMMERCIAL LAND

SWC 22 Mile Rd & Romeo Plank Rd,
Macomb Twp, MI

DEMOGRAPHICS

POPULATION

	1 MILE	3 MILE	5 MILE
2023 Estimated Population	97,096	207,421	629,722
2028 Projected Population	99,155	210,782	636,932
2020 Census Population	96,842	207,132	631,139
2010 Census Population	86,460	189,684	595,315
Projected Annual Growth 2023 to 2028	0.4%	0.3%	0.2%
Historical Annual Growth 2010 to 2023	0.9%	0.7%	0.4%

HOUSEHOLDS

2023 Estimated Households	36,419	81,506	253,391
2028 Projected Households	37,663	83,914	259,614
2020 Census Households	35,967	80,522	250,965
2010 Census Households	31,333	71,835	232,244
Projected Annual Growth 2023 to 2028	0.7%	0.6%	0.5%
Historical Annual Growth 2010 to 2023	1.2%	1.0%	0.7%

RACE

2023 Est. White	83.1%	83.1%	80.5%
2023 Est. Black	8.1%	8.5%	9.5%
2023 Est. Asian or Pacific Islander	4.3%	3.7%	5.0%
2023 Est. American Indian or Alaska Native	0.1%	0.1%	0.2%
2023 Est. Other Races	4.5%	4.5%	4.8%

INCOME

2023 Est. Average Household Income	\$129,090	\$118,130	\$113,161
2023 Est. Median Household Income	\$102,287	\$93,763	\$86,178
2023 Est. Per Capita Income	\$48,451	\$46,520	\$45,640

BUSINESS

2023 Est. Total Businesses	2,461	6,705	19,301
2023 Est. Total Employees	27,639	74,503	203,004

CONTACT US



**MICHAEL R.
LIPPITT**

Principal

mlippitt@landmarkcres.com

248 488 2620



**BRUCE A.
SIMON**

Principal

bsimon@landmarkcres.com

248 488 2620

LANDMARK
COMMERCIAL ▲ REAL ESTATE ▲ SERVICES

30500 Northwestern Hwy, Suite 200
Farmington Hills, MI 48334
248.488.2620
landmarkcres.com

LANDMARK COMMERCIAL REAL ESTATE SERVICES – Licensed Real Estate Brokers. The information above has been obtained from sources believed reliable. While we do not doubt its accuracy, we have not verified it and make no guarantee, warranty or representation about it. It is your responsibility to independently confirm its accuracy and completeness. Any projections, opinions, assumptions or estimates are used for example only and do not represent the current or future performance of the property. The value of this transaction to you depends on tax and other factors which should be evaluated by your tax, financial and legal advisors. You and your advisors should conduct a careful, independent investigation of the property to determine to your satisfaction, the suitability of the property for your needs.