

FOR LEASE

LAKESHORE PLAZA

30110-30128 HARPER AVE, ST CLAIR SHORES, MI 48082

5,447 SF
AVAILABLE



PROPERTY DETAILS

LOCATION: 30110-30128 Harper Ave
St Clair Shores, MI 48082

PROPERTY TYPE: Shopping Center

DATE AVAILABLE: Immediately

RENT: \$15.00/SF

NNN EXPENSE: \$5.70/SF

BUILDING SIZE: 23,230 SF

LOT SIZE: 1.89 AC

AVAILABLE SPACE: 5,447 SF

TRAFFIC COUNT: Harper Ave (22,717 CPD)
13 Mile Rd (19,260 CPD)

EXCLUSIVELY LISTED BY:



LOUIS J. CIOTTI
Managing Director
lciotti@landmarkcres.com
248 488 2620



ANTHONY J. VITALE
Director
avitale@landmarkcres.com
248 488 2620

\$15.00/SF

RENT

\$5.70/SF

NNN

TENANT ROSTER



HIGHLIGHTS

- Highly Visible Center with Signage on Harper Ave
- Great Accessibility Along Heavily Traveled Harper Avenue (22,717 CPD)
- Former Gym Space Available
- Join Notable Retailers

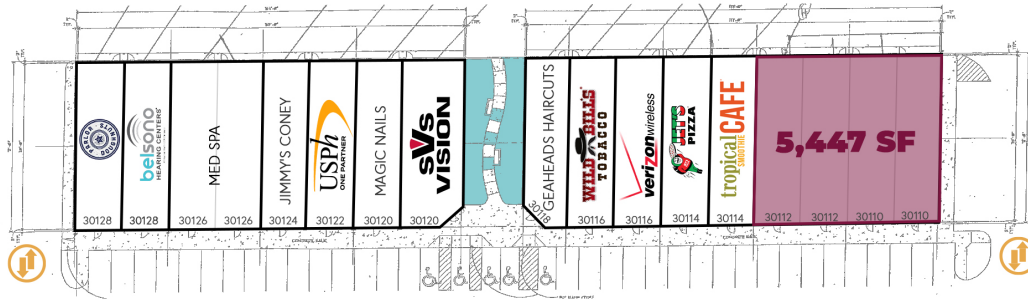
MICRO AERIAL



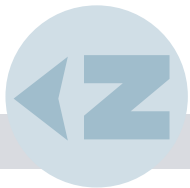
MACRO AERIAL



SITE PLAN



HARPER AVE



LAKESHORE PLAZA

30110-30128 Harper Ave,
St Clair Shores, MI 48082

UNIT	SIZE	TENANT
30128	1,368 SF	Parlor Doughnuts
30128	1,512 SF	Belsono
30126	2,880 SF	Med Spa
30126	1,440 SF	Jimmy's Coney
30122	1,600 SF	US Physical Therapy
30120	1,292 SF	Magic Nails
30120	1,894 SF	SVS Vision
30118	1,318 SF	Gearheads
30116	1,460 SF	Wild Bill's Tobacco
30116	1,375 SF	Verizon Wireless
30114	1,512 SF	Jet's Pizza
30114	1,753 SF	Tropical Smoothie
30110	5,447 SF	VACANT

PLAT

LAKESHORE PLAZA

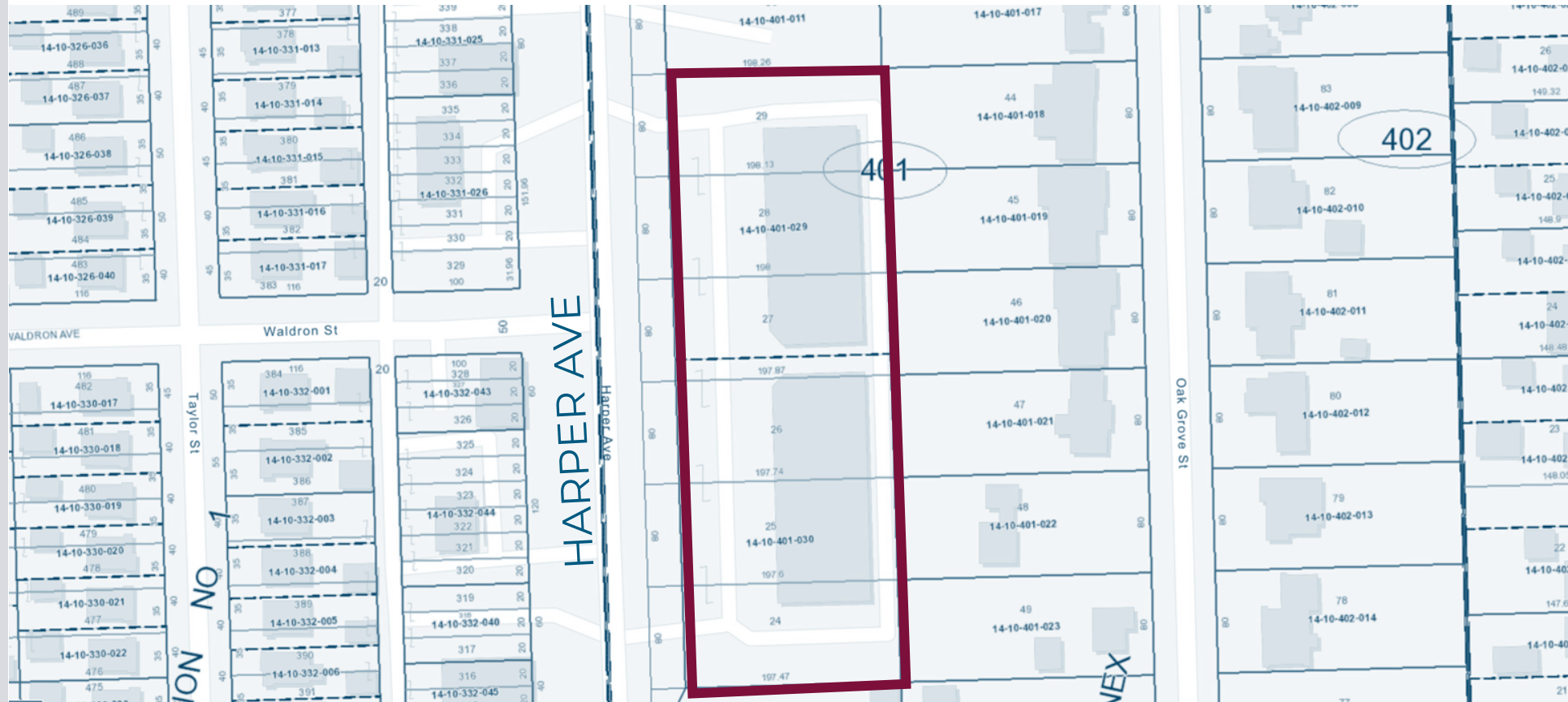
30110-30128 Harper Ave,
St Clair Shores, MI 48082



PLAT

LAKESHORE PLAZA

30110-30128 Harper Ave,
St Clair Shores, MI 48082

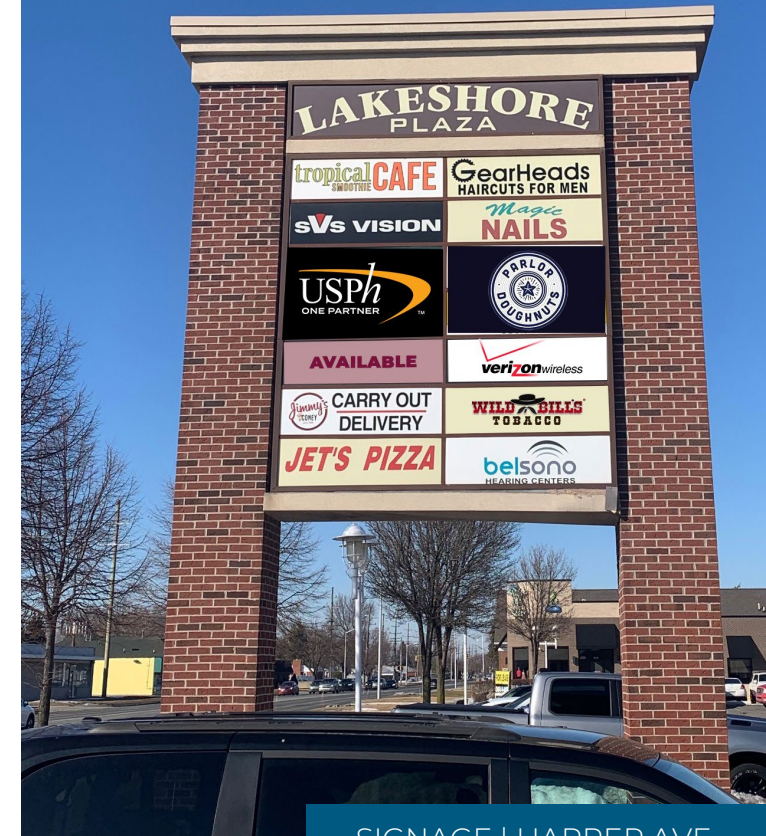


PICTURES



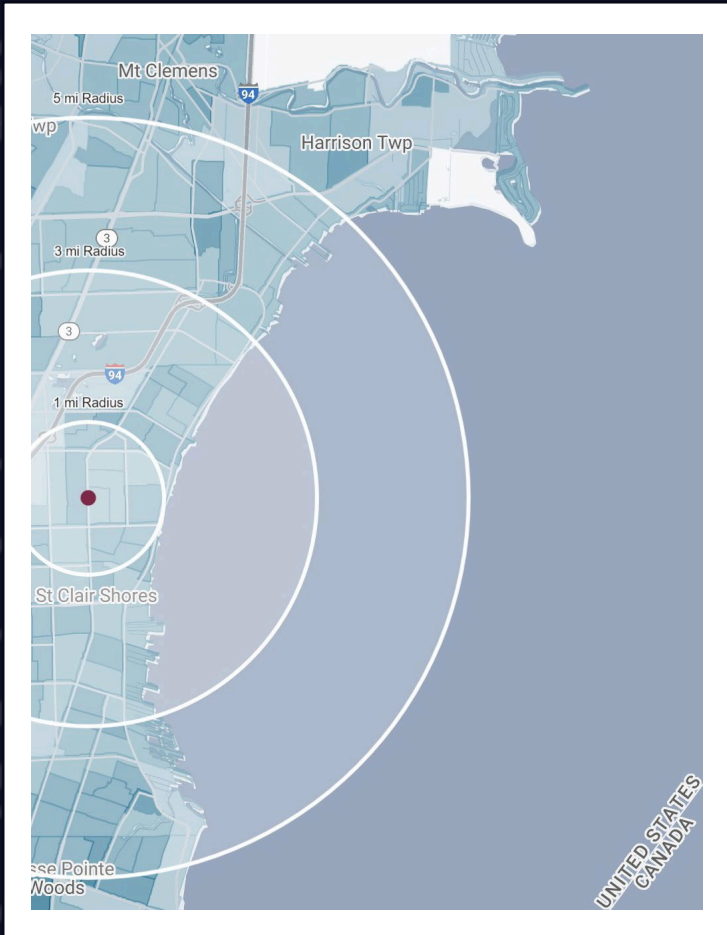
LAKESHORE PLAZA

30110-30128 Harper Ave,
St Clair Shores, MI 48082



SIGNAGE | HARPER AVE

DEMOGRAPHICS



LAKESHORE PLAZA

30110-30128 Harper Ave
St Clair Shores, MI 48082

DEMOGRAPHICS

POPULATION

	1 MILE	3 MILE	5 MILE
2023 Estimated Population	15,726	97,584	250,151
2028 Projected Population	15,855	97,322	248,990
2020 Census Population	15,897	98,376	251,856
2010 Census Population	15,809	98,502	249,754
Projected Annual Growth 2023 to 2028	0.2%	-	-
Historical Annual Growth 2010 to 2023	-	-	-

HOUSEHOLDS

2023 Estimated Households	7,061	42,695	108,885
2028 Projected Households	7,227	43,243	109,933
2020 Census Households	7,055	42,542	108,324
2010 Census Households	6,789	41,427	105,478
Projected Annual Growth 2023 to 2028	0.5%	0.3%	0.2%
Historical Annual Growth 2010 to 2023	0.3%	0.2%	0.2%

RACE

2023 Est. White	87.4%	77.1%	72.9%
2023 Est. Black	6.9%	15.8%	19.9%
2023 Est. Asian or Pacific Islander	1.1%	1.8%	2.4%
2023 Est. American Indian or Alaska Native	0.2%	0.2%	0.2%
2023 Est. Other Races	4.4%	5.1%	4.7%

INCOME

2023 Est. Average Household Income	\$94,792	\$89,598	\$90,919
2023 Est. Median Household Income	\$75,078	\$66,048	\$66,827
2023 Est. Per Capita Income	\$42,583	\$39,287	\$39,647

BUSINESS

2023 Est. Total Businesses	460	3,157	7,866
2023 Est. Total Employees	3,610	29,141	71,617

CONTACT US



**LOUIS J.
CIOTTI**

Managing Director

lciotti@landmarkcres.com

248 488 2620



**ANTHONY J.
VITALE**

Director

avitale@landmarkcres.com

248 488 2620

LANDMARK
COMMERCIAL ▲ REAL ESTATE ▲ SERVICES

30500 Northwestern Hwy, Suite 200
Farmington Hills, MI 48334
248.488.2620
landmarkcres.com

LANDMARK COMMERCIAL REAL ESTATE SERVICES – Licensed Real Estate Brokers. The information above has been obtained from sources believed reliable. While we do not doubt its accuracy, we have not verified it and make no guarantee, warranty or representation about it. It is your responsibility to independently confirm its accuracy and completeness. Any projections, opinions, assumptions or estimates are used for example only and do not represent the current or future performance of the property. The value of this transaction to you depends on tax and other factors which should be evaluated by your tax, financial and legal advisors. You and your advisors should conduct a careful, independent investigation of the property to determine to your satisfaction, the suitability of the property for your needs.