

FOR LEASE/SALE

FORMER BANK BRANCH

5775 E. 14 MILE RD, STERLING HEIGHTS, MI 48310



PROPERTY DETAILS

\$1.4M

\$120K/YR NNN

3,173 SF

SALE PRICE

RENT

BLDG SIZE

LOCATION:	5775 E. 14 Mile Rd, Sterling Heights, MI 48310
PROPERTY TYPE:	Freestanding Building/Vacant Land
SALE PRICE:	\$1,400,000.00
RENT:	\$120,000.00/YR NNN
PROPERTY TAXES:	\$20,000.00
BUILDING SIZE:	3,173 SF
LOT SIZE:	1.19 AC
LOT DIMENSIONS:	160.24' X 316.31'
ZONING:	O-1
TRAFFIC COUNT:	E. 14 Mile Rd (23,528 CPD) Mound Rd (97,045 CPD)

HIGHLIGHTS

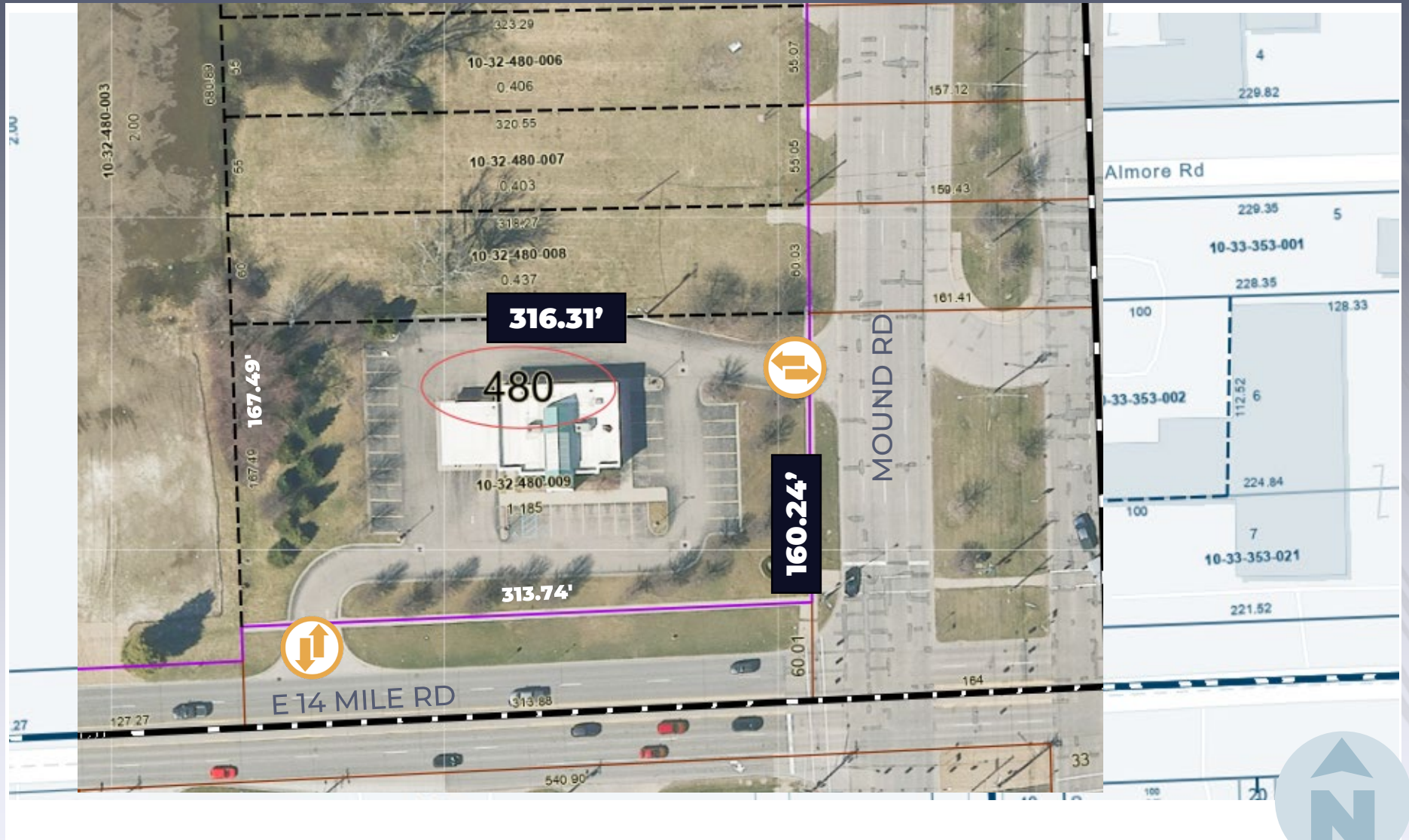
- Located on NWC of Mound Rd & 14 Mile Rd
- Site Option Available
- Absolute Net Lease
- Site can be Leased for Many Uses including Retail
- Heavy Traffic
- Curb Cuts Off of Mound Rd & 14 Mile Rd
- Great Visibility & Signage

EXCLUSIVELY LISTED BY:

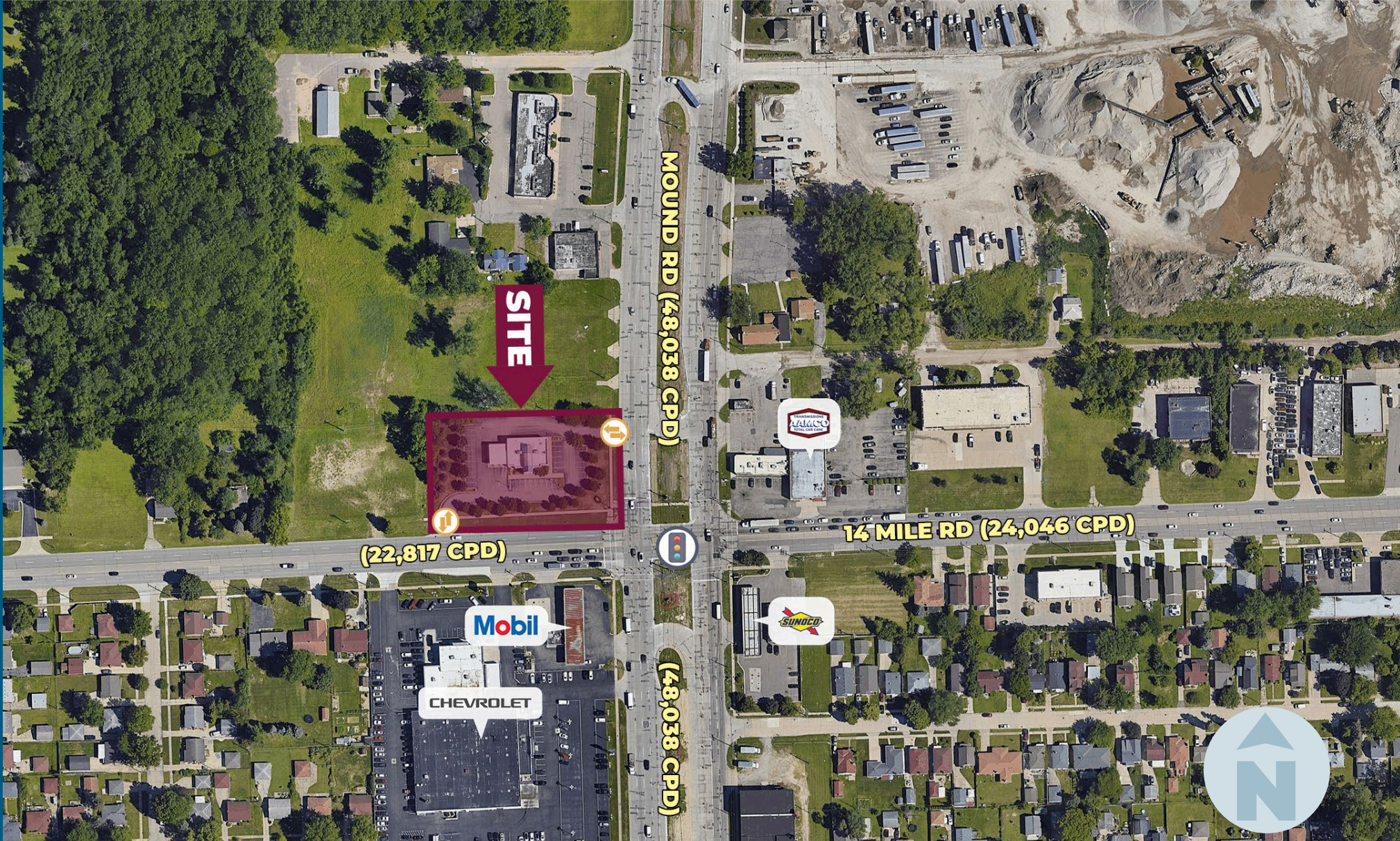


**LOUIS J.
CIOTTI**
Managing Director
lcotti@landmarkcres.com
248 488 2620

PLAT



MICRO AERIAL



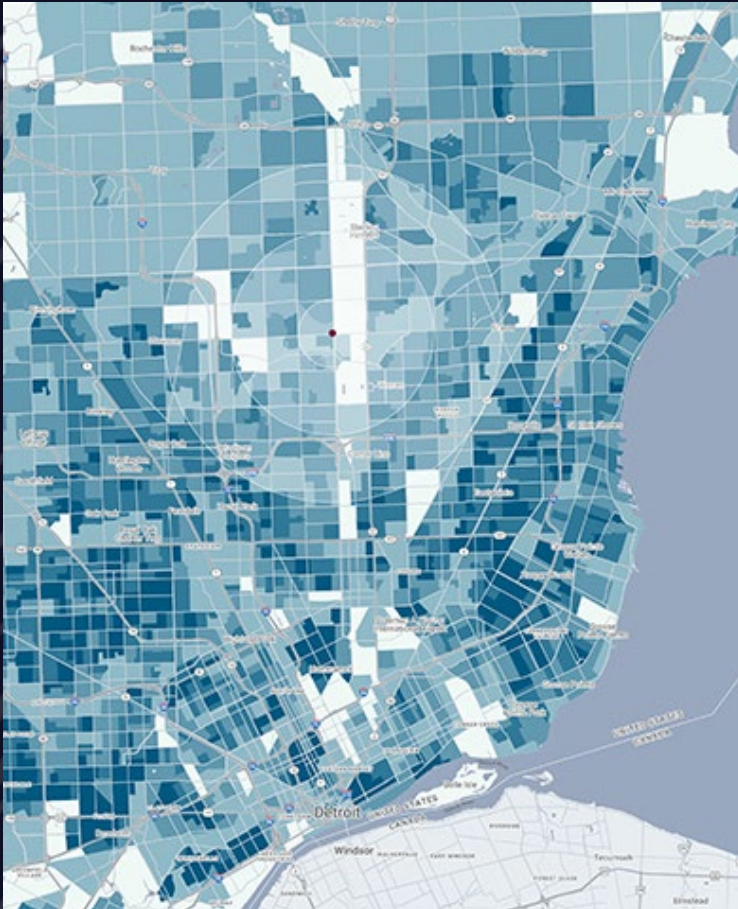
MACRO AERIAL



SITE PHOTOS



DEMOGRAPHICS



FORMER BANK BRANCH & VACANT LAND

5775 E 14 Mile Rd, Sterling Heights, MI

DEMOGRAPHICS

POPULATION	1 MILE	3 MILE	5 MILE
2024 Estimated Population	8,127	100,256	292,393
2029 Projected Population	8,052	99,278	290,633
2020 Census Population	8,264	100,129	295,277
2010 Census Population	8,075	96,273	286,143
Projected Annual Growth 2024 to 2029	-0.2%	-0.2%	-0.1%
Historical Annual Growth 2010 to 2024	-	0.3%	0.2%
HOUSEHOLDS			
2024 Estimated Households	3,402	40,052	120,843
2029 Projected Households	3,404	39,980	120,607
2020 Census Households	3,363	39,765	119,950
2010 Census Households	3,263	38,197	115,038
Projected Annual Growth 2024 to 2029	-	-	-
Historical Annual Growth 2010 to 2024	0.3%	0.3%	0.4%
RACE			
2024 Est. White	75.0%	73.2%	73.5%
2024 Est. Black	11.6%	10.7%	11.2%
2024 Est. Asian or Pacific Islander	8.9%	12.4%	11.0%
2024 Est. American Indian or Alaska Native	0.2%	0.1%	0.1%
2024 Est. Other Races	4.4%	3.6%	4.1%
INCOME			
2024 Est. Average Household Income	\$75,606	\$92,283	\$98,957
2024 Est. Median Household Income	\$61,222	\$75,001	\$79,999
2024 Est. Per Capita Income	\$31,677	\$36,977	\$40,975
BUSINESS			
2024 Est. Total Businesses	472	4,222	11,428
2024 Est. Total Employees	6,100	57,256	157,365

CONTACT US



**LOUIS J.
CIOTTI**

Managing Director

lciotti@landmarkcres.com

248 488 2620

LANDMARK
COMMERCIAL ▲ REAL ESTATE ▲ SERVICES

30500 Northwestern Hwy, Suite 200
Farmington Hills, MI 48334
248.488.2620
landmarkcres.com

LANDMARK COMMERCIAL REAL ESTATE SERVICES – Licensed Real Estate Brokers. The information above has been obtained from sources believed reliable. While we do not doubt its accuracy, we have not verified it and make no guarantee, warranty or representation about it. It is your responsibility to independently confirm its accuracy and completeness. Any projections, opinions, assumptions or estimates are used for example only and do not represent the current or future performance of the property. The value of this transaction to you depends on tax and other factors which should be evaluated by your tax, financial and legal advisors. You and your advisors should conduct a careful, independent investigation of the property to determine to your satisfaction, the suitability of the property for your needs.