

FOR LEASE

FORMER BANK BRANCH & VACANT LAND

5775 E. 14 MILE RD, STERLING HEIGHTS, MI 48310



PROPERTY DETAILS

3,173 SF

2.81 AC

BLDG SIZE

LOT SIZE

LOCATION: 5775 E. 14 Mile Rd, Sterling Heights, MI 48310

PROPERTY TYPE: Freestanding Building/Vacant Land

RENT: Contact Broker

PROPERTY TAXES: \$20,000.00

BUILDING SIZE: 3,173 SF

LOT SIZE: 2.81 AC

LOT DIMENSIONS: 385' X 326'

ZONING: O-1

TRAFFIC COUNT: E. 14 Mile Rd (23,528 CPD)
Mound Rd (97,045 CPD)

HIGHLIGHTS

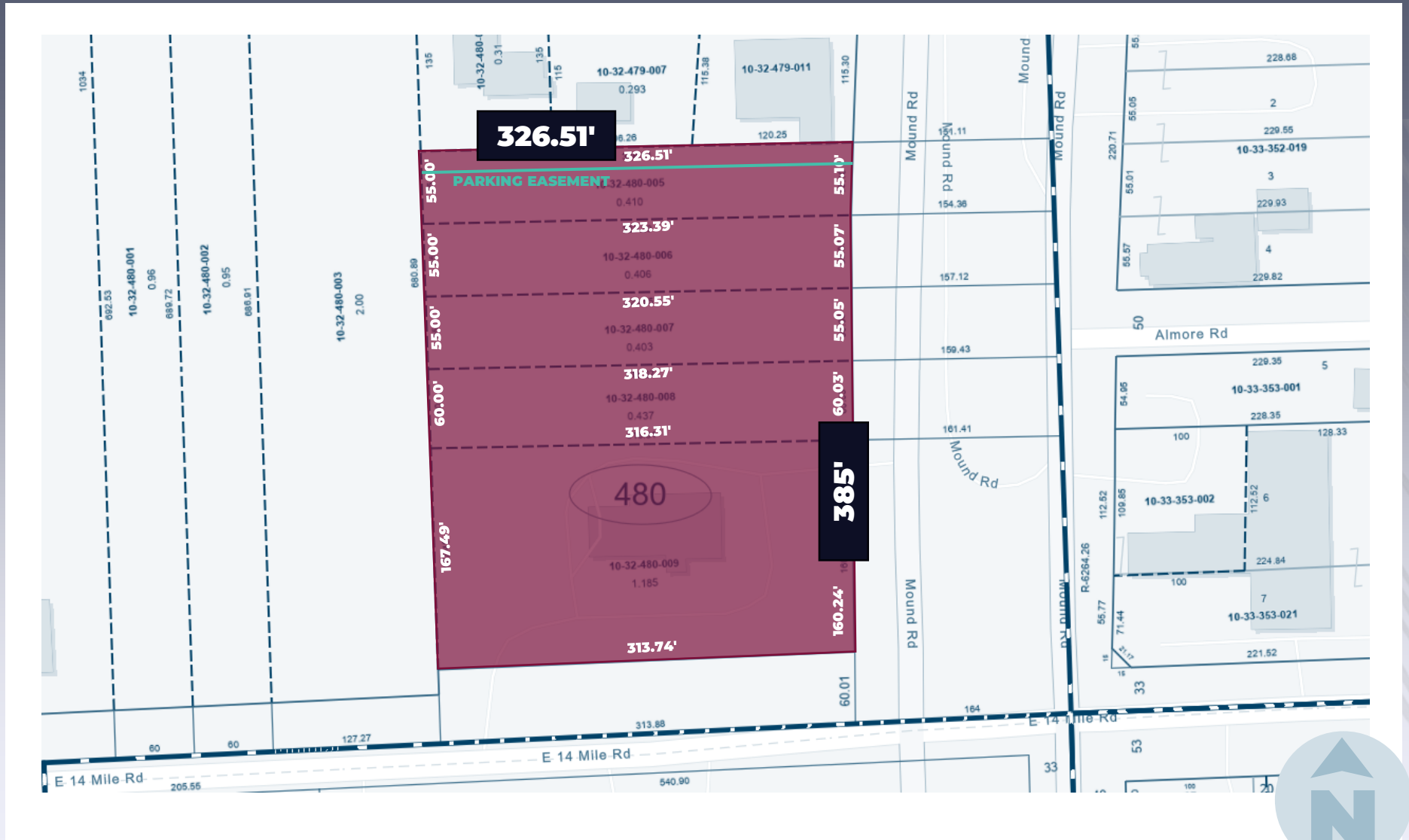
- Located on NWC of Mound Rd & 14 Mile Rd
- 2.81 AC Encompasses 5 Parcels
- Heavy Traffic Counts
- Curb cuts off of Mound Rd & 14 Mile Rd
- Great Visibility
- Potential for 2 Pads
- Parking Easement on the North Side of Lot up to 20 Parking Spots

EXCLUSIVELY LISTED BY:

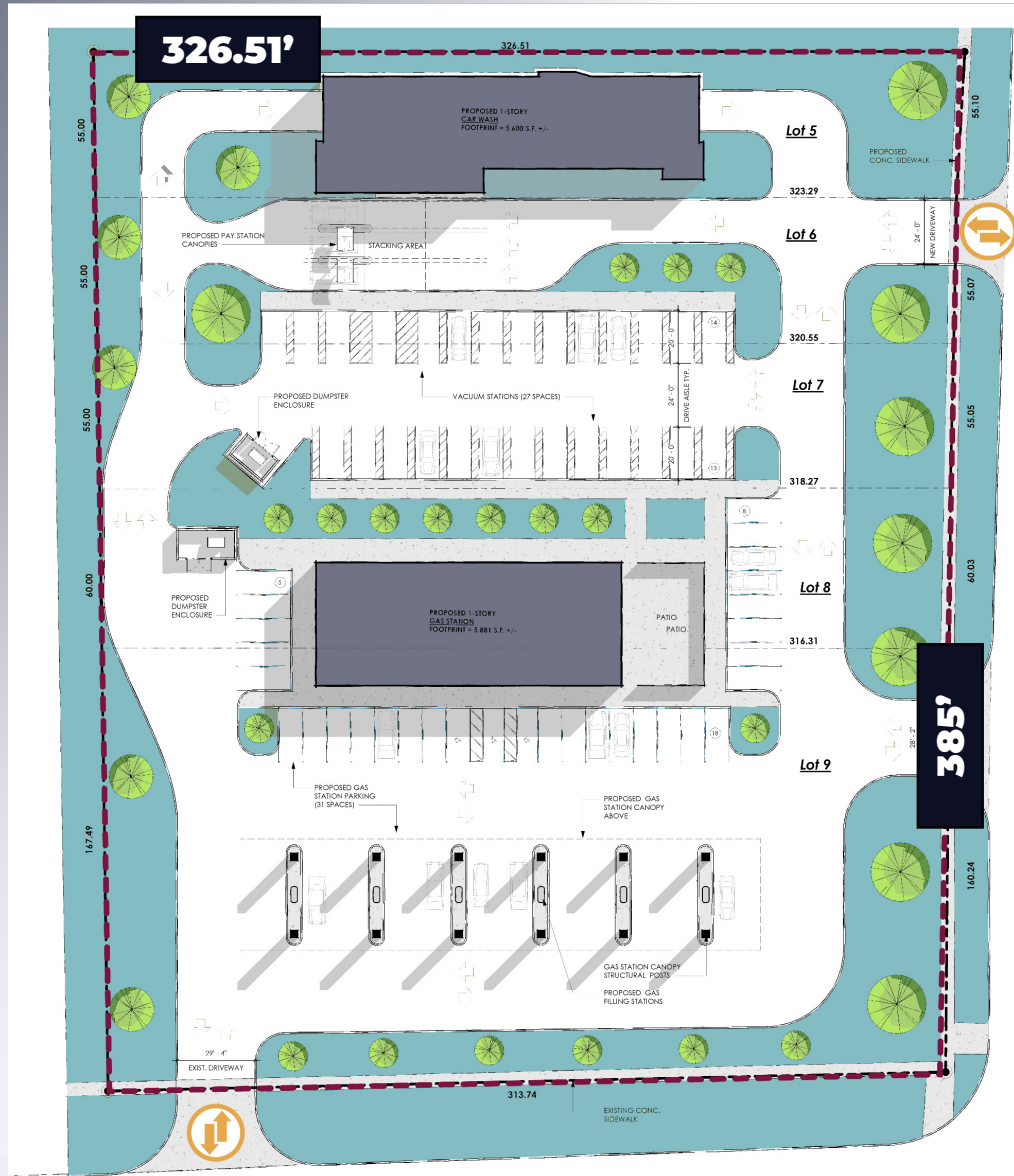


LOUIS J. CIOTTI
Managing Director
lcioffi@landmarkcres.com
248 488 2620

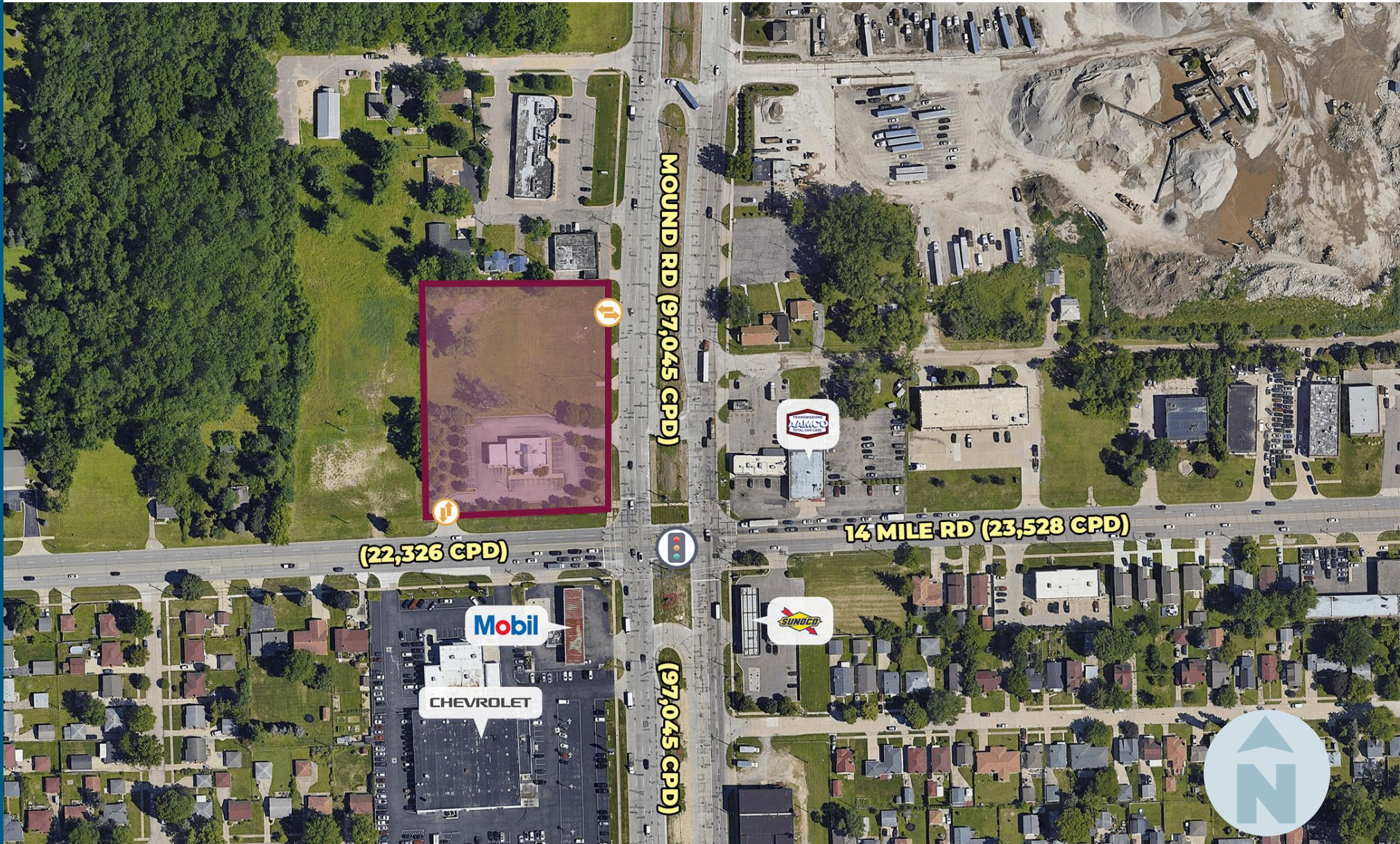
PLAT



CONCEPTUAL SITE PLAN



MICRO AERIAL



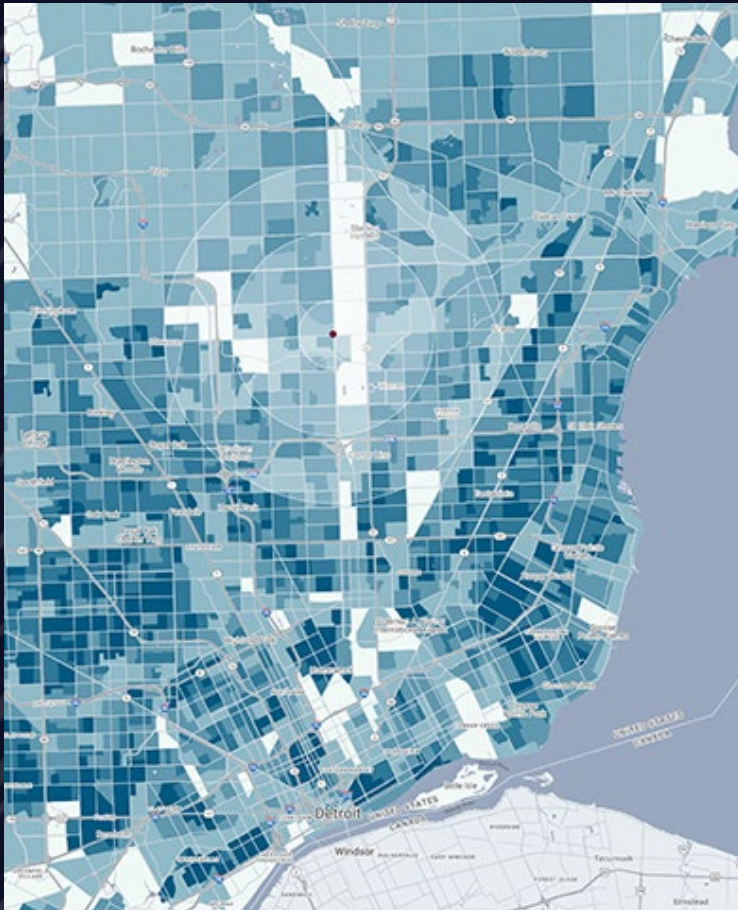
MACRO AERIAL



SITE PHOTOS



DEMOGRAPHICS



FORMER BANK BRANCH & VACANT LAND

5775 E 14 Mile Rd, Sterling Heights, MI

DEMOGRAPHICS

POPULATION

	1 MILE	3 MILE	5 MILE
2023 Estimated Population	8,229	99,327	293,167
2028 Projected Population	8,344	98,160	290,987
2020 Census Population	8,264	100,129	295,277
2010 Census Population	8,075	96,273	286,143
Projected Annual Growth 2023 to 2028	0.3%	-0.2%	-0.1%
Historical Annual Growth 2010 to 2023	0.1%	0.2%	0.2%

HOUSEHOLDS

2023 Estimated Households	3,390	39,981	120,562
2028 Projected Households	3,470	40,034	121,030
2020 Census Households	3,363	39,765	119,950
2010 Census Households	3,263	38,197	115,038
Projected Annual Growth 2023 to 2028	0.5%	-	-
Historical Annual Growth 2010 to 2023	0.3%	0.4%	0.4%

RACE

2023 Est. White	76.0%	74.3%	74.5%
2023 Est. Black	11.0%	10.0%	10.7%
2023 Est. Asian or Pacific Islander	8.4%	11.8%	10.5%
2023 Est. American Indian or Alaska Native	0.2%	0.1%	0.2%
2023 Est. Other Races	4.4%	3.7%	4.2%

INCOME

2023 Est. Average Household Income	\$71,881	\$91,421	\$97,503
2023 Est. Median Household Income	\$59,119	\$69,515	\$74,785
2023 Est. Per Capita Income	\$29,631	\$36,905	\$40,170

BUSINESS

2023 Est. Total Businesses	472	4,223	11,440
2023 Est. Total Employees	6,132	57,298	157,505

CONTACT US



**LOUIS J.
CIOTTI**

Managing Director

lciotti@landmarkcres.com

248 488 2620

LANDMARK
COMMERCIAL ▲ REAL ESTATE ▲ SERVICES

30500 Northwestern Hwy, Suite 200
Farmington Hills, MI 48334
248.488.2620
landmarkcres.com

LANDMARK COMMERCIAL REAL ESTATE SERVICES – Licensed Real Estate Brokers. The information above has been obtained from sources believed reliable. While we do not doubt its accuracy, we have not verified it and make no guarantee, warranty or representation about it. It is your responsibility to independently confirm its accuracy and completeness. Any projections, opinions, assumptions or estimates are used for example only and do not represent the current or future performance of the property. The value of this transaction to you depends on tax and other factors which should be evaluated by your tax, financial and legal advisors. You and your advisors should conduct a careful, independent investigation of the property to determine to your satisfaction, the suitability of the property for your needs.