

FOR SALE

UNION LAKE VILLAS APARTMENTS

UNION LAKE RD & 16 MILE RD, CLINTON TWP, MI 48035



MEADOWBRIDGE
CONDOMINIUM

EASTWOOD VILLAGE
APARTMENTS

UNION LAKE
VILLAS
APARTMENTS

DRAWBRIDGE
APARTMENTS

COUNTRY SQUIRE
APARTMENTS

MEADOWBRIDGE DR

UNION LAKE RD (4,185 CPD)

PROPERTY DETAILS

\$399,000.00

\$24,950/UNIT

PRICE

UNIT PRICE

LOCATION:	Union Lake Rd & 16 Mile Rd Clinton Twp, MI 48035		
PROPERTY TYPE:	Vacant Land		
DATE AVAILABLE:	Immediately		
PROPERTY TAXES:	\$4,000.00		
BUILDING SIZE:	Building A	7,580 SF	8 Units
	Building B	11,880 SF	12 Units
	Total	19,460 SF	20 Units
PARKING:	45 Parking Spaces		
LOT SIZE:	1.925 AC		
LOT DIMENSIONS:	±85 x ±995		

HIGHLIGHTS

- Proposed Apartment Complex Development
- Development includes: 20 Total Units
 - Building A
 - 8 Units (4 One Bedroom & 4 Two Bedroom)
 - Building B
 - 12 Units (4 One Bedroom & 8 Two Bedroom)
- Water
- Sanitary
- Storm
- Entry-way
- Deceleration Lane
- Retention Pond
- By-pass is Finished w/Site Improvements
- Situated in L'Anse Creuse School District
- Minutes Away from Macomb Community College
- Close proximity to Metro Beach

EXCLUSIVELY LISTED BY:



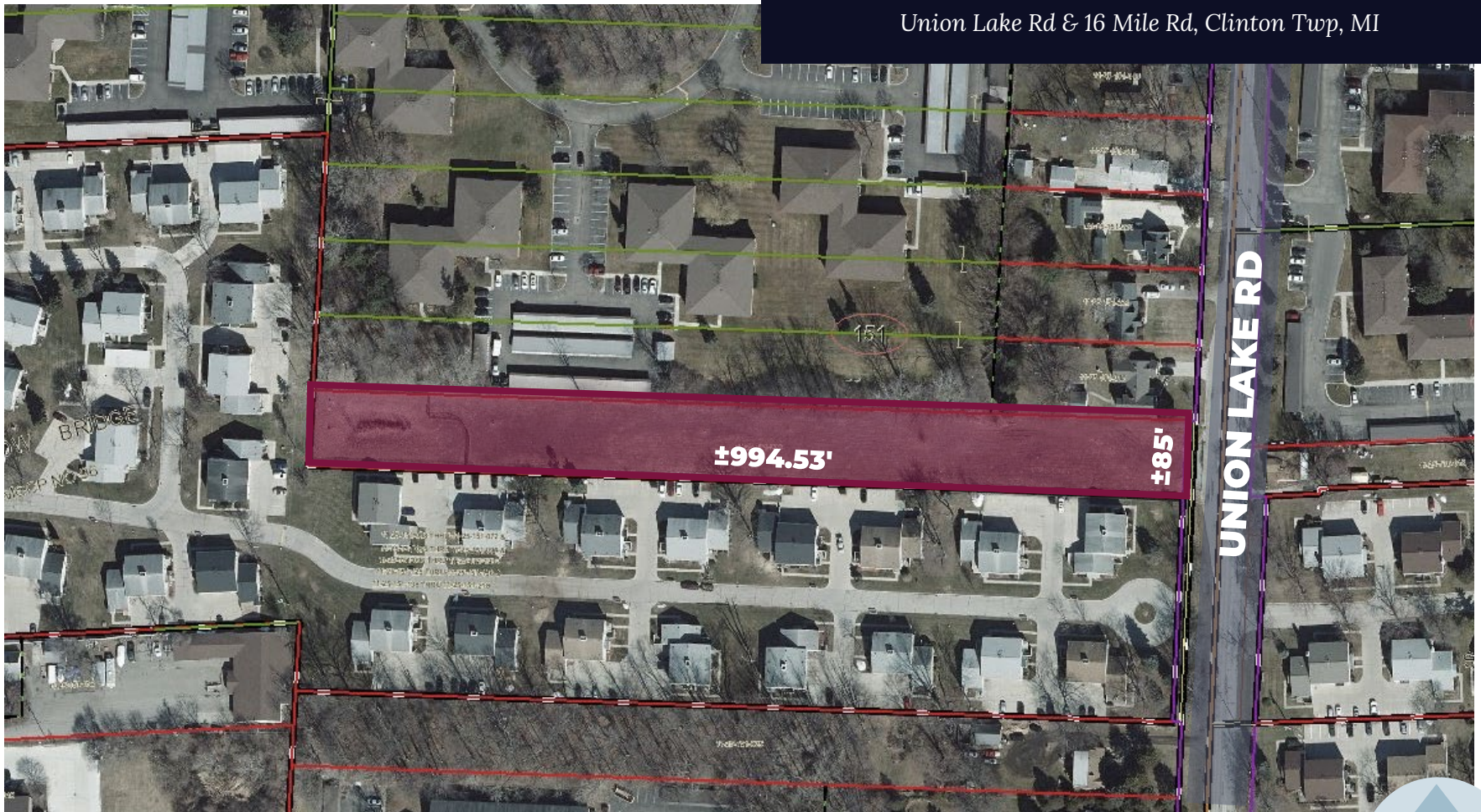
**LOUIS J.
CIOTTI**

Managing Director
lciotti@landmarkcres.com
248 488 2620

PLAT

UNION LAKE VILLAS APARTMENTS

Union Lake Rd & 16 Mile Rd, Clinton Twp, MI



SITE PLAN

UNION LAKE VILLAS APARTMENTS

Union Lake Rd & 16 Mile Rd, Clinton Twp, MI

20 TOTAL UNITS

A

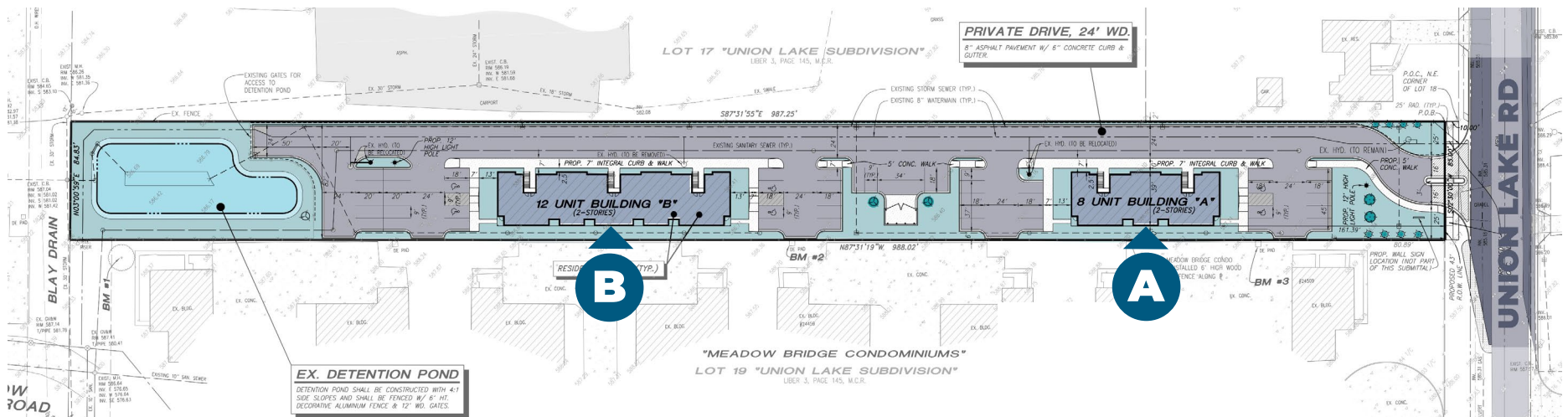
8 UNITS TOTAL

- 4 Units 1 Bedroom
- 4 Units 2 Bedrooms

B

12 UNITS TOTAL

- 4 Units 1 Bedroom
- 8 Units 2 Bedrooms

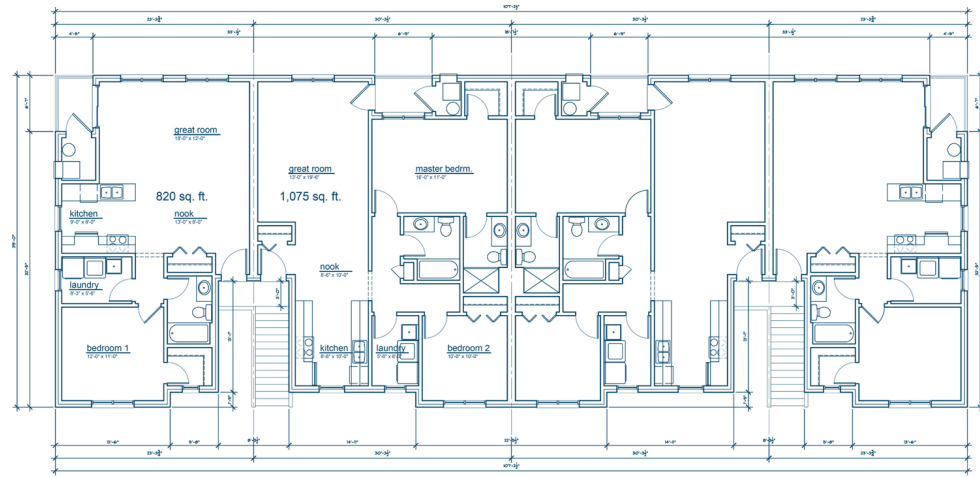


FLOOR PLAN – BUILDING A

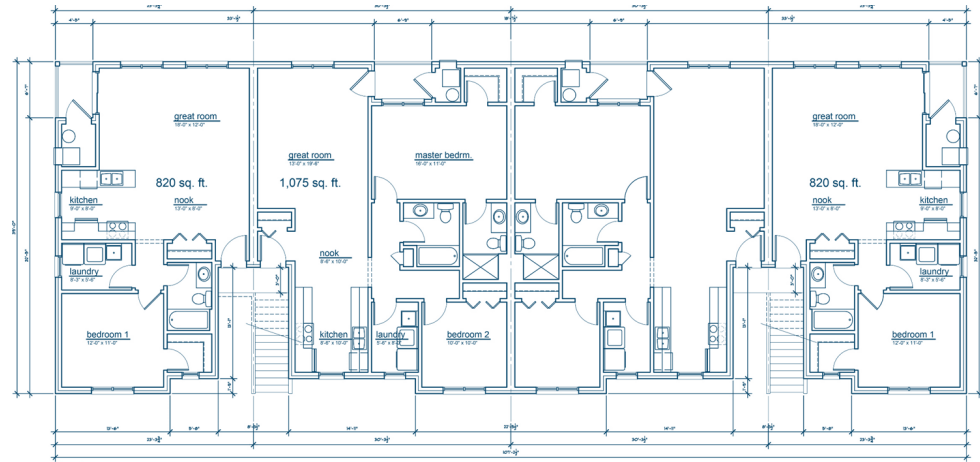
A

8 UNITS TOTAL

- 4 Units 1 Bedroom
- 4 Units 2 Bedrooms



SECOND FLOOR



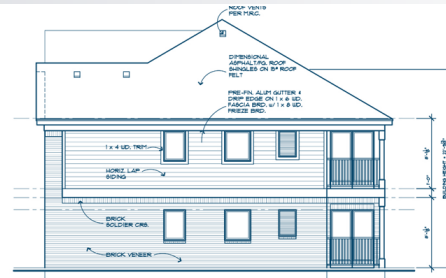
FIRST FLOOR

ELEVATIONS – BUILDING A

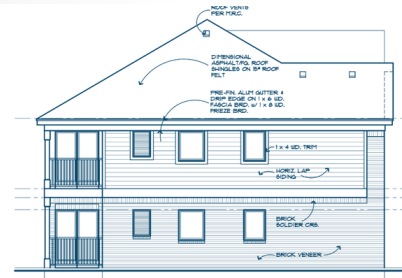
A

8 UNITS TOTAL

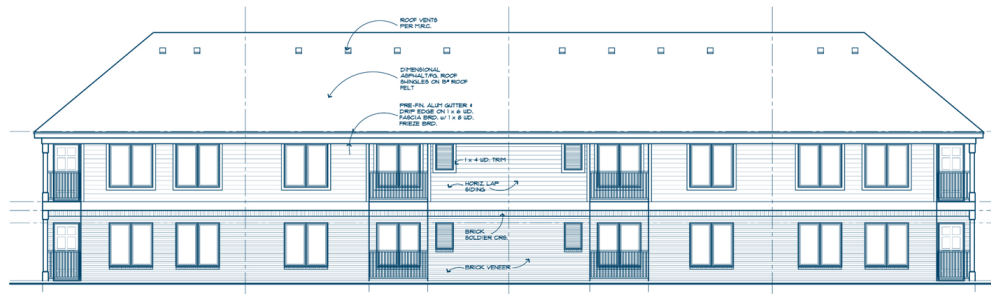
- 4 Units 1 Bedroom
- 4 Units 2 Bedrooms



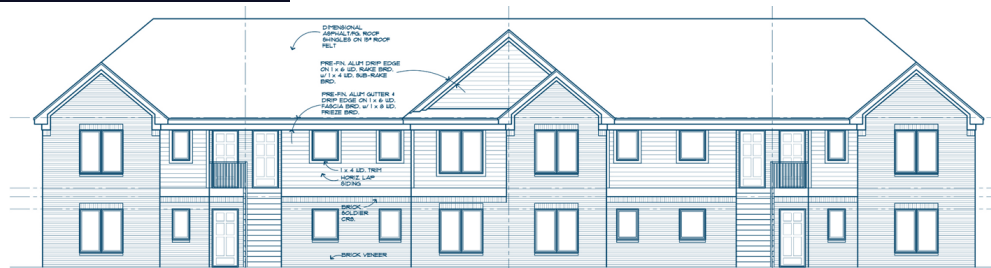
RIGHT SIDE ELEVATION



LEFT SIDE ELEVATION



REAR ELEVATION



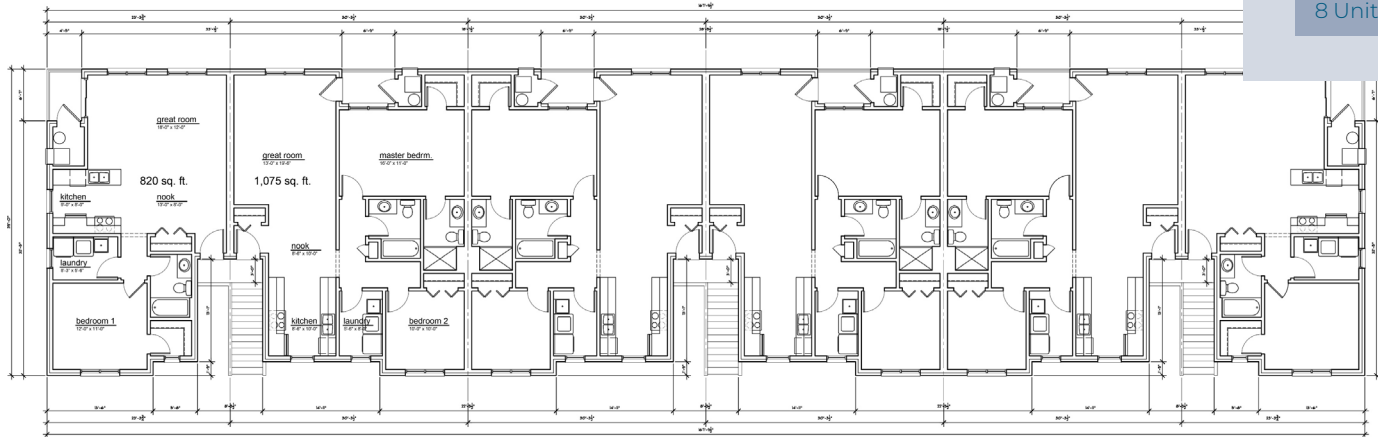
FRONT ELEVATION

FLOOR PLAN – BUILDING B

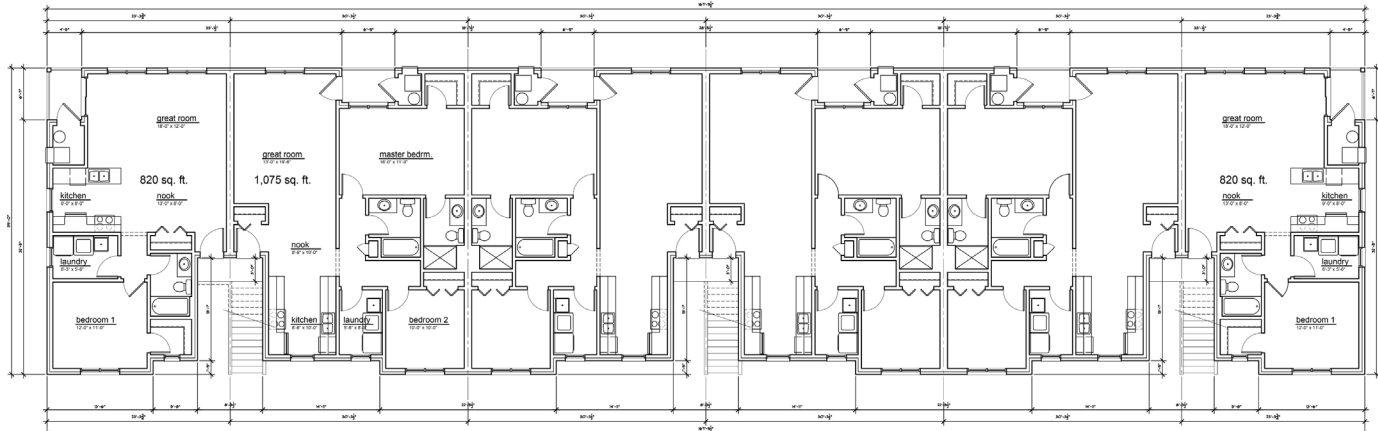
B

12 UNITS TOTAL

- 4 Units 1 Bedroom
- 8 Units 2 Bedrooms



SECOND FLOOR



FIRST FLOOR

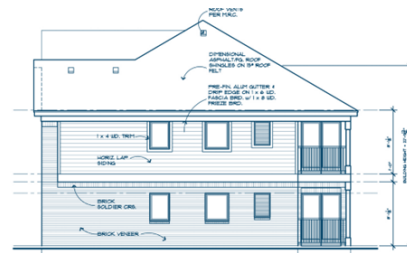
ELEVATIONS – BUILDING B

B

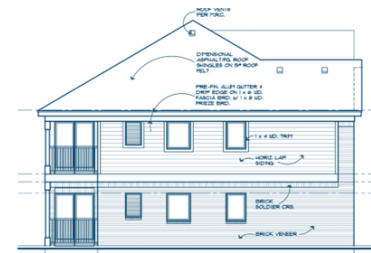
12 UNITS TOTAL

4 Units 1 Bedroom

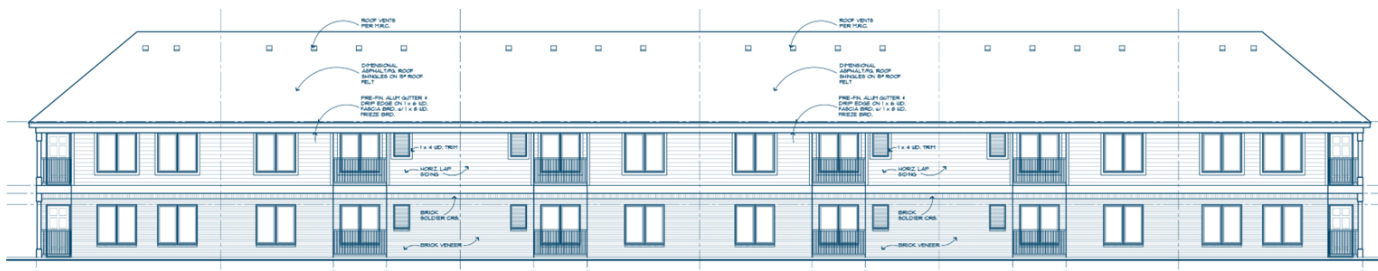
8 Units 2 Bedrooms



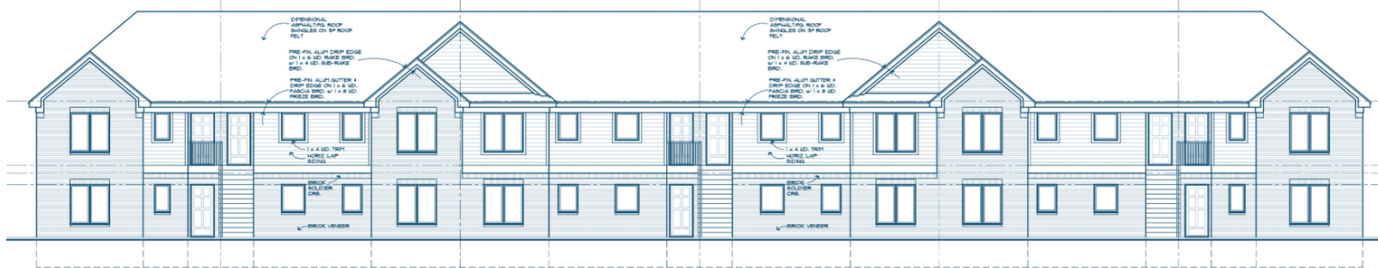
RIGHT SIDE ELEVATION



LEFT SIDE ELEVATION



REAR ELEVATION



FRONT ELEVATION

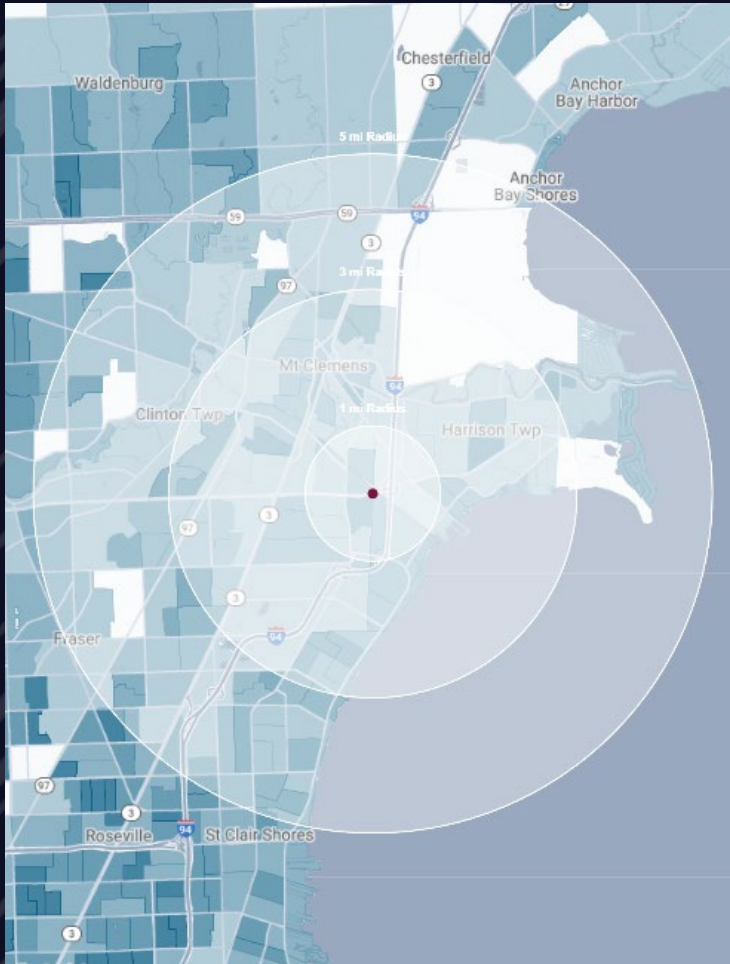
MICRO AERIAL



MACRO AERIAL



DEMOGRAPHICS



UNION LAKE VILLAS APARTMENTS

Union Lake Rd & 16 Mile Rd, Clinton Twp, MI

DEMOGRAPHICS

POPULATION

	1 MILE	3 MILE	5 MILE
2023 Estimated Population	13,124	74,185	163,328
2028 Projected Population	12,967	73,596	163,262
2020 Census Population	13,210	74,600	164,006
2010 Census Population	13,074	74,888	162,853
Projected Annual Growth 2023 to 2028	-0.2%	-0.2%	-
Historical Annual Growth 2010 to 2023	-	-	-

HOUSEHOLDS

2023 Estimated Households	6,704	33,916	72,662
2028 Projected Households	6,730	34,160	73,700
2020 Census Households	6,669	33,690	72,096
2010 Census Households	6,384	32,698	69,194
Projected Annual Growth 2023 to 2028	-	0.1%	0.3%
Historical Annual Growth 2010 to 2023	0.4%	0.3%	0.4%

RACE

2023 Est. White	68.1%	72.6%	76.8%
2023 Est. Black	25.9%	20.5%	16.3%
2023 Est. Asian or Pacific Islander	1.6%	1.5%	1.9%
2023 Est. American Indian or Alaska Native	0.2%	0.2%	0.2%
2023 Est. Other Races	4.2%	5.1%	4.8%

INCOME

2023 Est. Average Household Income	\$78,839	\$87,988	\$95,176
2023 Est. Median Household Income	\$55,225	\$65,787	\$70,812
2023 Est. Per Capita Income	\$40,419	\$40,310	\$42,471

BUSINESS

2023 Est. Total Businesses	286	2,519	5,583
2023 Est. Total Employees	3,213	26,563	60,551

CONTACT US



**LOUIS J.
CIOTTI**
Managing Director
lciotti@landmarkcres.com
248 488 2620

LANDMARK
COMMERCIAL ▲ REAL ESTATE ▲ SERVICES

30500 Northwestern Hwy, Suite 200
Farmington Hills, MI 48334
248.488.2620
landmarkcres.com

LANDMARK COMMERCIAL REAL ESTATE SERVICES – Licensed Real Estate Brokers. The information above has been obtained from sources believed reliable. While we do not doubt its accuracy, we have not verified it and make no guarantee, warranty or representation about it. It is your responsibility to independently confirm its accuracy and completeness. Any projections, opinions, assumptions or estimates are used for example only and do not represent the current or future performance of the property. The value of this transaction to you depends on tax and other factors which should be evaluated by your tax, financial and legal advisors. You and your advisors should conduct a careful, independent investigation of the property to determine to your satisfaction, the suitability of the property for your needs.