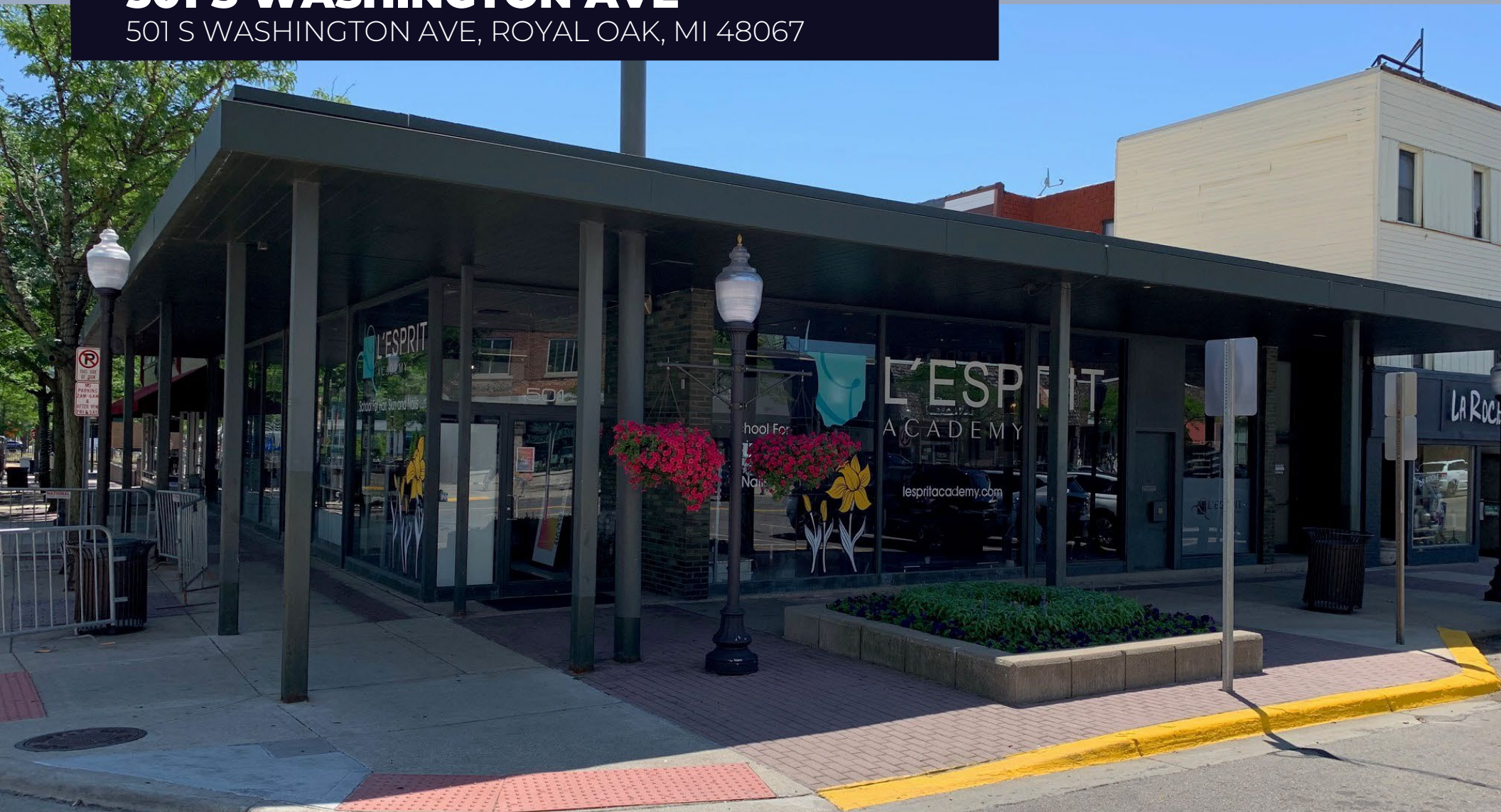


FOR LEASE/SALE

501 S WASHINGTON AVE

501 S WASHINGTON AVE, ROYAL OAK, MI 48067



PROPERTY DETAILS

\$25.00/ SF NNN

\$10.00/ SF NNN

\$3.50/SF

**GROUND
LEVEL RENT**

**LOWER
LEVEL RENT**

NNN

LOCATION: 501 S Washington Ave,
Royal Oak, MI 48067

PROPERTY TYPE: Freestanding

DATE AVAILABLE: July 2023

SALES PRICE: Contact Broker

RENT: Ground Level: \$25.00/ SF NNN
Lower Level: \$10.00/ SF NNN

NNN EXPENSE: \$3.50/ SF

BUILDING SIZE: Ground Level: 3,465 SF
Lower Level: 3,465 SF

AVAILABLE SPACE: 6,930 SF

TRAFFIC COUNT: S Washington Ave (±11K CPD)
5th Ave (±2K CPD)

HIGHLIGHTS

- Highly visible corner building currently designed for a full-service hair salon complete with manicure/ pedicure chairs and massage room.
- Floor to ceiling glass windows with contemporary interior design.
- Signage available on Washington Ave and 5th St.
- Street and structure parking.
- Located in close proximity to many dining, retail and entertainment establishments.
- This property benefits from high-foot traffic in the heart of southeast Michigan's most walkable community.
- Royal Oak is Metro Detroit's most central location, minutes away from I-696, I-75 & M-1.

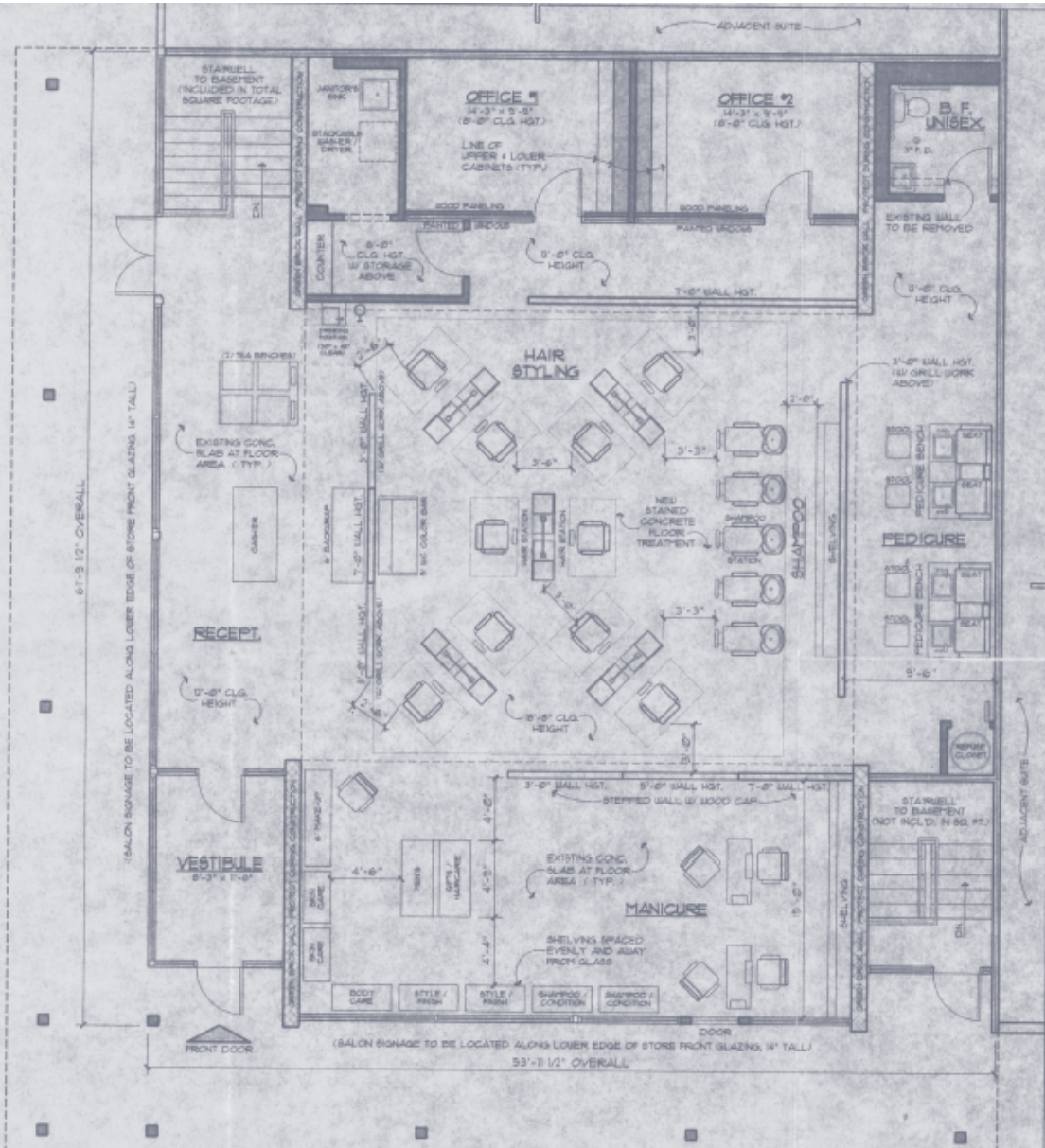
EXCLUSIVELY LISTED BY:



**ANTHONY J.
VITALE**

Director
avitale@landmarkres.com
248 488 2620

FLOOR PLAN



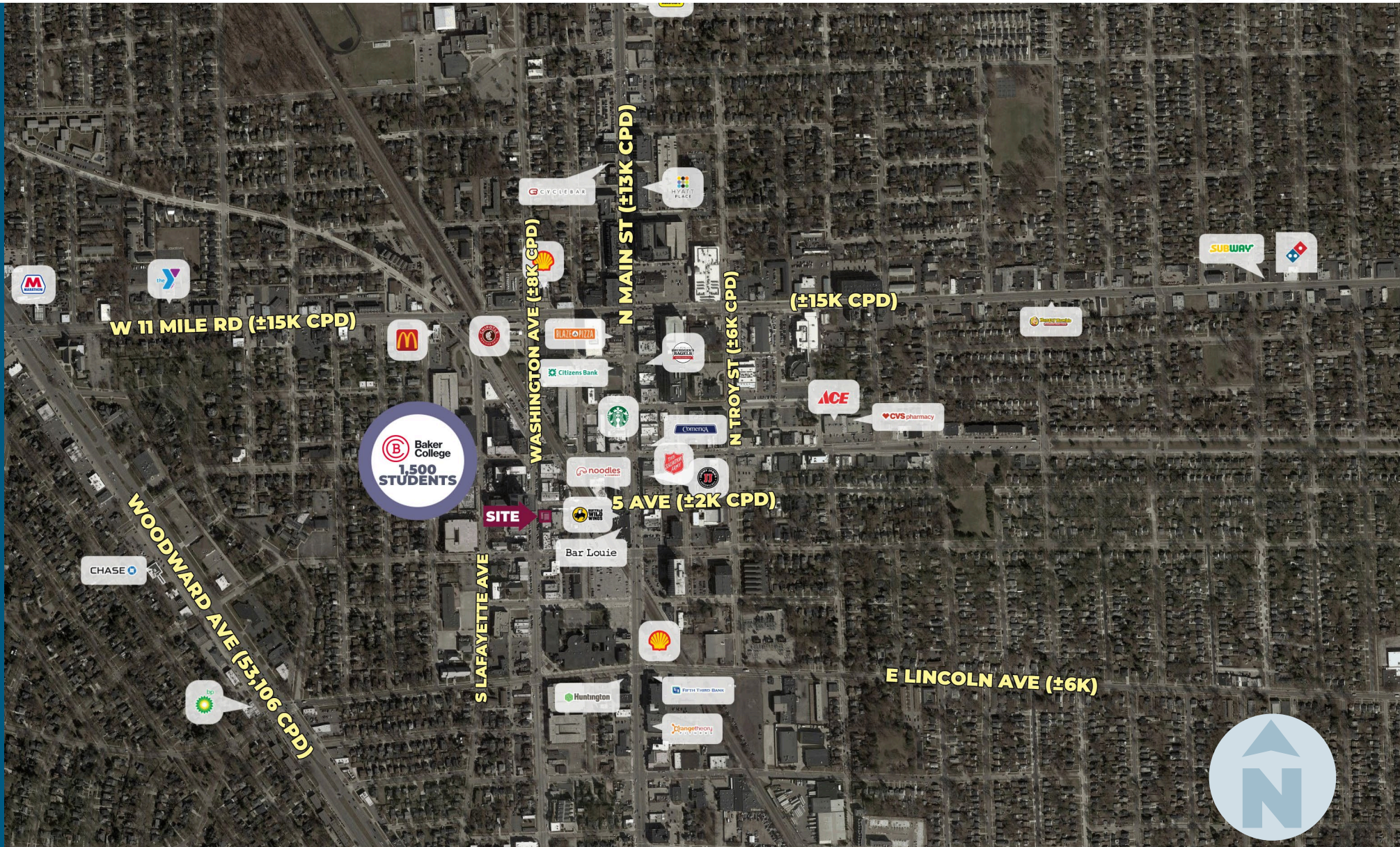
MICRO AERIAL



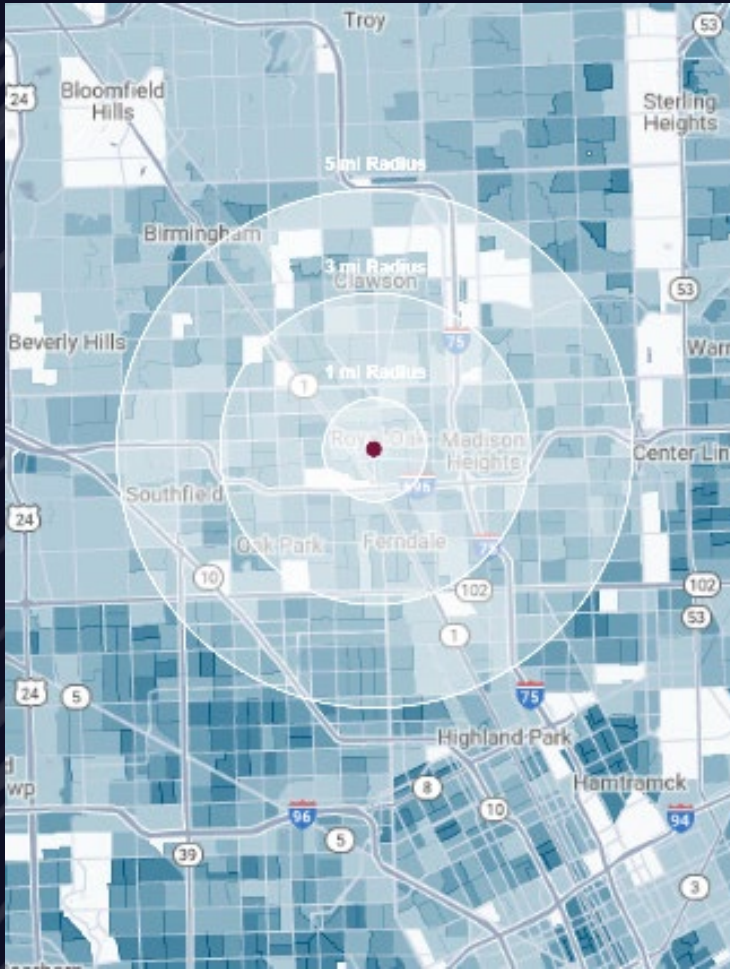
Google

Map data

MACRO AERIAL



DEMOGRAPHICS



501 S WASHINGTON AVE
 501 S WASHINGTON AVE,
 ROYAL OAK, MI 48067

DEMOGRAPHICS

POPULATION

	1 MILE	3 MILE	5 MILE
2023 Estimated Population	17,089	142,080	356,950
2028 Projected Population	16,641	133,172	335,826
2020 Census Population	17,102	144,336	363,805
2010 Census Population	16,590	145,063	362,774
Projected Annual Growth 2023 to 2028	-0.5%	-1.3%	-1.2%
Historical Annual Growth 2010 to 2023	0.2%	-0.2%	-0.1%

HOUSEHOLDS

2023 Estimated Households	8,728	65,555	157,442
2028 Projected Households	8,521	61,241	148,135
2020 Census Households	8,685	67,579	161,803
2010 Census Households	8,220	64,916	155,634
Projected Annual Growth 2023 to 2028	-0.5%	-1.3%	-1.2%
Historical Annual Growth 2010 to 2023	0.5%	-	-

RACE

2023 Est. White	85.0%	76.1%	58.8%
2023 Est. Black	5.4%	15.2%	31.0%
2023 Est. Asian or Pacific Islander	5.0%	4.0%	5.7%
2023 Est. American Indian or Alaska Native	0.1%	0.2%	0.2%
2023 Est. Other Races	4.4%	4.7%	4.3%

INCOME

2023 Est. Average Household Income	\$161,113	\$128,171	\$109,244
2023 Est. Median Household Income	\$114,407	\$96,024	\$81,332
2023 Est. Per Capita Income	\$82,321	\$59,159	\$48,251

BUSINESS

2023 Est. Total Businesses	1,399	6,269	18,975
2023 Est. Total Employees	11,070	55,193	197,220

CONTACT US



**ANTHONY J.
VITALE**

Director

avitale@landmarkcres.com

248 488 2620

LANDMARK
COMMERCIAL ▲ REAL ESTATE ▲ SERVICES

30500 Northwestern Hwy, Suite 200
Farmington Hills, MI 48334
248.488.2620
landmarkcres.com

LANDMARK COMMERCIAL REAL ESTATE SERVICES – Licensed Real Estate Brokers. The information above has been obtained from sources believed reliable. While we do not doubt its accuracy, we have not verified it and make no guarantee, warranty or representation about it. It is your responsibility to independently confirm its accuracy and completeness. Any projections, opinions, assumptions or estimates are used for example only and do not represent the current or future performance of the property. The value of this transaction to you depends on tax and other factors which should be evaluated by your tax, financial and legal advisors. You and your advisors should conduct a careful, independent investigation of the property to determine to your satisfaction, the suitability of the property for your needs.