

FOR LEASE (PAD SITE)
HAYES LIFESTYLE SHOPPES

45825 HAYES RD, SHELBY TWP, MI 48315



PROPERTY DETAILS

LOCATION:	45825 Hayes Rd Shelby Twp, MI 48315
PROPERTY TYPE:	Vacant Land
DATE AVAILABLE:	Immediately
GROUND LEASE RATE:	\$72,000 (Annually)
PROPERTY TAXES:	TBD
LOT SIZE:	1.17 AC
LOT DIMENSIONS:	187' x 212'
ZONING:	TBD
TRAFFIC COUNTS:	Hayes Rd (36,714 CPD) Hall Rd (M-59) (81,972 CPD)

EXCLUSIVELY LISTED BY:



LOUIS J. CIOTTI
Managing Director
lcioffi@landmarkres.com
248 488 2620

TENANT ROSTER



HIGHLIGHTS

- Beautifully Maintained Lifestyle Center Shoppes
- Located Directly in Front of Lifetime Fitness
- 1.17 Acre Pad that Fronts Hayes Rd
- 3 Access Points in the Center
- Property Sits at a Traffic Light (Hayes Rd)

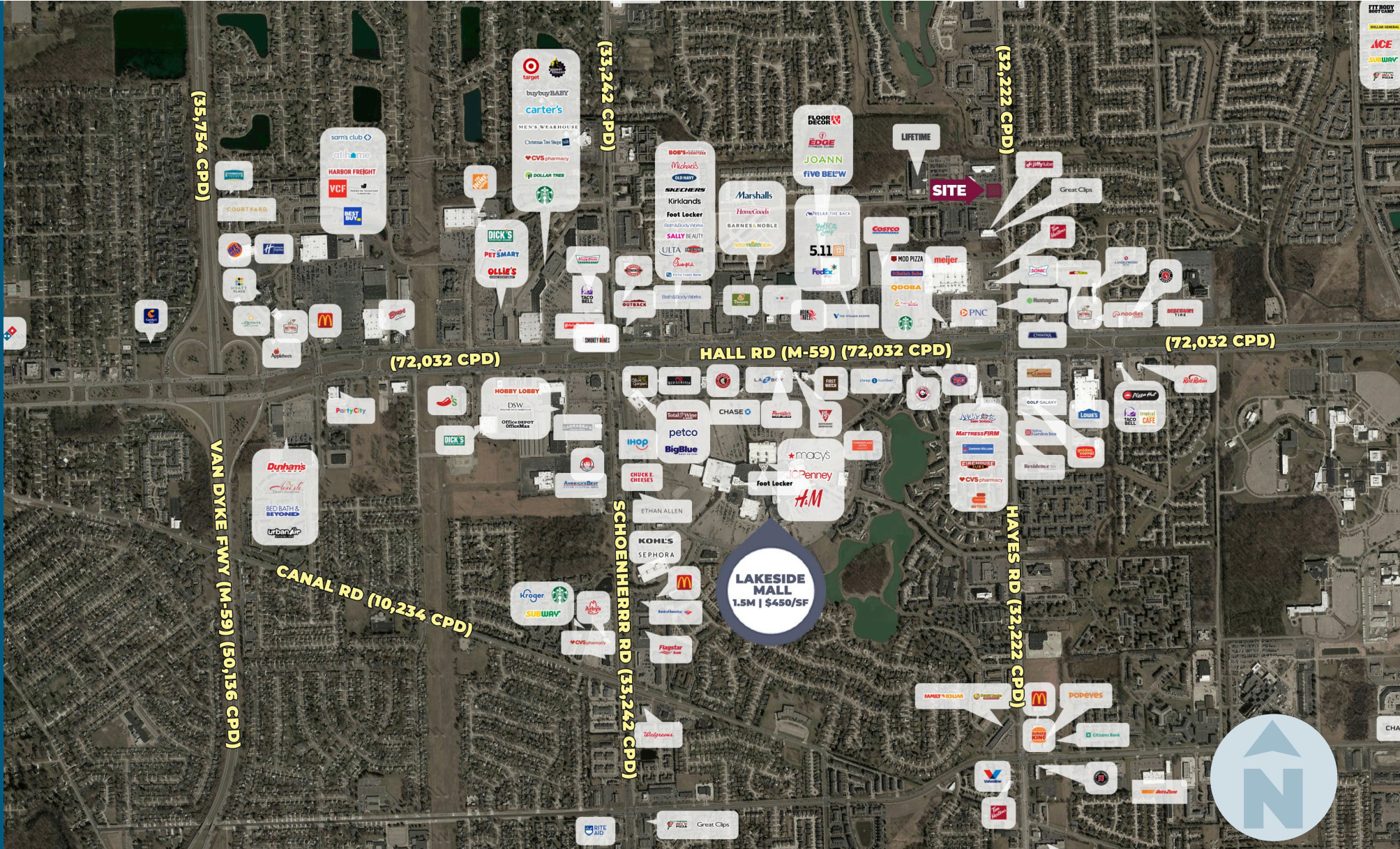
PLAT



MICRO AERIAL

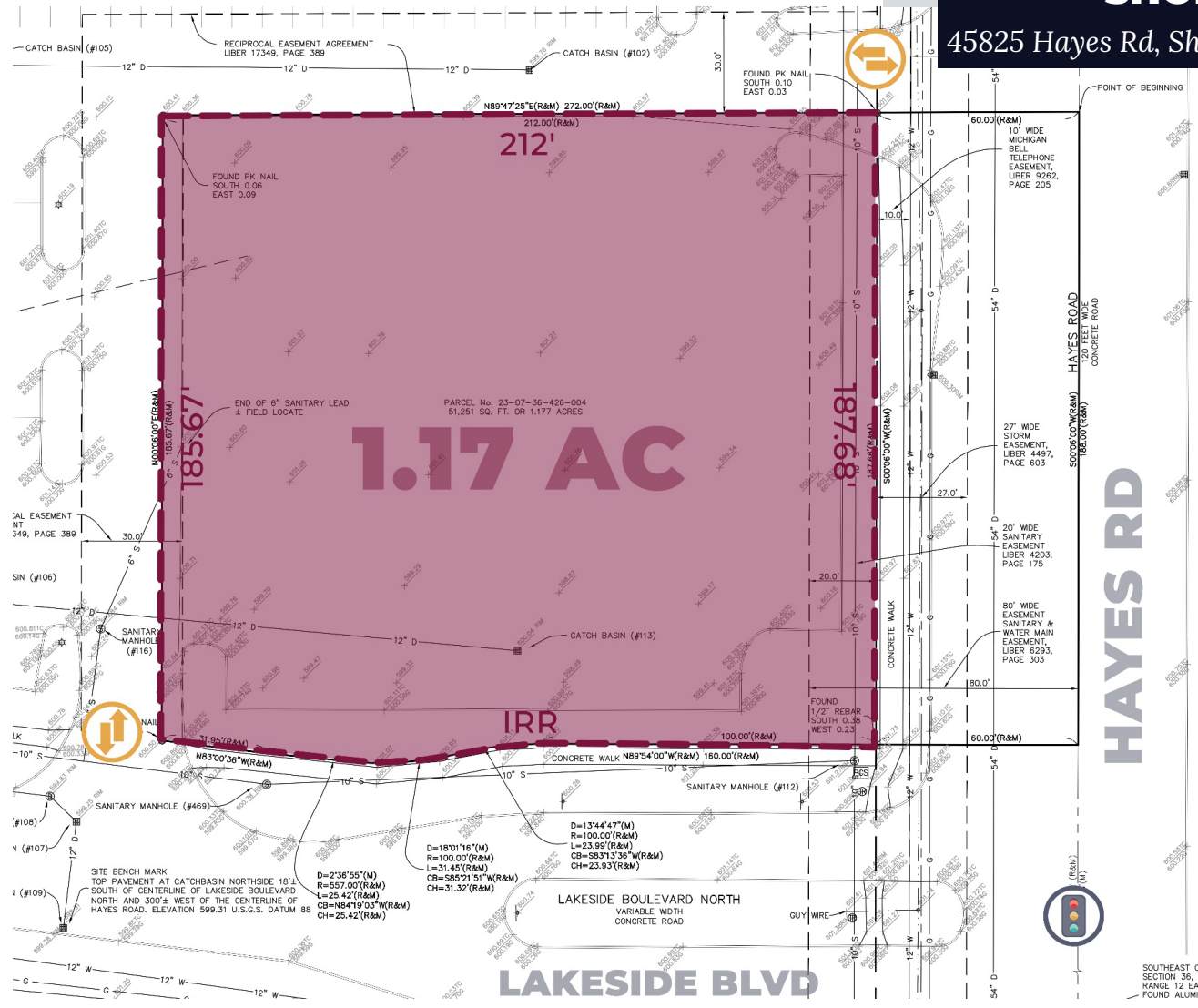


MACRO AERIAL

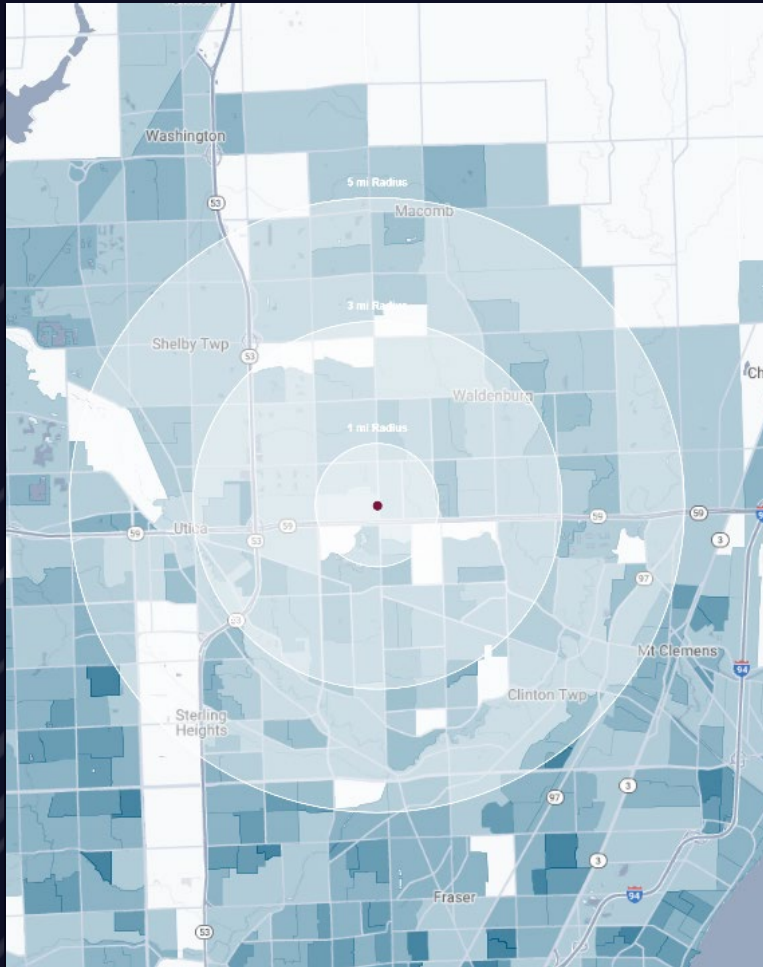


ALTA SURVEY

HAYES LIFESTYLE SHOPPES
45825 Hayes Rd, Shelby Twp, MI 48315



DEMOGRAPHICS



HAYES LIFESTYLE SHOPPES

45825 Hayes Rd, Shelby Twp, MI 48315

DEMOGRAPHICS

POPULATION

	1 MILE	3 MILE	5 MILE
2023 Estimated Population	12,604	106,758	249,856
2028 Projected Population	12,587	106,284	255,620
2020 Census Population	12,730	108,531	250,084
2010 Census Population	13,065	102,851	235,352
Projected Annual Growth 2023 to 2028	-	-	0.5%
Historical Annual Growth 2010 to 2023	-0.3%	0.3%	0.5%

HOUSEHOLDS

2023 Estimated Households	6,074	44,882	100,992
2028 Projected Households	6,027	44,500	102,427
2020 Census Households	5,983	44,739	99,103
2010 Census Households	6,129	41,722	91,332
Projected Annual Growth 2023 to 2028	-0.2%	-0.2%	0.3%
Historical Annual Growth 2010 to 2023	-	0.6%	0.8%

RACE

2023 Est. White	79.2%	81.5%	80.2%
2023 Est. Black	11.4%	9.1%	10.0%
2023 Est. Asian or Pacific Islander	5.8%	5.1%	5.1%
2023 Est. American Indian or Alaska Native	0.1%	0.1%	0.1%
2023 Est. Other Races	3.5%	4.3%	4.5%

INCOME

2023 Est. Average Household Income	\$98,914	\$114,084	\$116,644
2023 Est. Median Household Income	\$71,476	\$88,629	\$90,763
2023 Est. Per Capita Income	\$48,007	\$48,036	\$47,239

BUSINESS

2023 Est. Total Businesses	647	3,627	8,114
2023 Est. Total Employees	8,305	37,597	90,687

CONTACT US



**LOUIS J.
CIOTTI**

Managing Director

lciotti@landmarkcres.com

248 488 2620

LANDMARK
COMMERCIAL ▲ REAL ESTATE ▲ SERVICES

30500 Northwestern Hwy, Suite 200
Farmington Hills, MI 48334
248.488.2620
landmarkcres.com

LANDMARK COMMERCIAL REAL ESTATE SERVICES – Licensed Real Estate Brokers. The information above has been obtained from sources believed reliable. While we do not doubt its accuracy, we have not verified it and make no guarantee, warranty or representation about it. It is your responsibility to independently confirm its accuracy and completeness. Any projections, opinions, assumptions or estimates are used for example only and do not represent the current or future performance of the property. The value of this transaction to you depends on tax and other factors which should be evaluated by your tax, financial and legal advisors. You and your advisors should conduct a careful, independent investigation of the property to determine to your satisfaction, the suitability of the property for your needs.