

# FOR SALE/LEASE VACANT LAND (UP TO 16 AC)

MICHIGAN AVE & OLD CANTON CENTER RD, CANTON, MI 48188



SITE	ACRES
A	(Approx.) 10.9 AC
B	1.47 AC
C	3.82 AC

# PROPERTY DETAILS

**LOCATION:** Michigan Ave & Old Canton Center Rd  
Canton, MI 48188

**PROPERTY TYPE:** Vacant Land

**DATE AVAILABLE:** Immediately

**SALES PRICE:** Contact Broker

**RENT:** Contact Broker

**NNN EXPENSE:** TBD

**AVAILABLE SPACE:** 16 AC

Site A	10.9 AC
Site B	1.47 AC
Site C	3.82 AC

**ZONING:** C3

**IMPROVEMENTS:** All Utilities on Site

**TRAFFIC COUNTS:** Beck Rd (12,509 CPD)  
Michigan Ave (26,361 CPD)

EXCLUSIVELY LISTED BY:



**GORDON S. HYDE**  
Senior Associate  
[ghyde@landmarkcres.com](mailto:ghyde@landmarkcres.com)  
248 488 2620

## ANCHORS

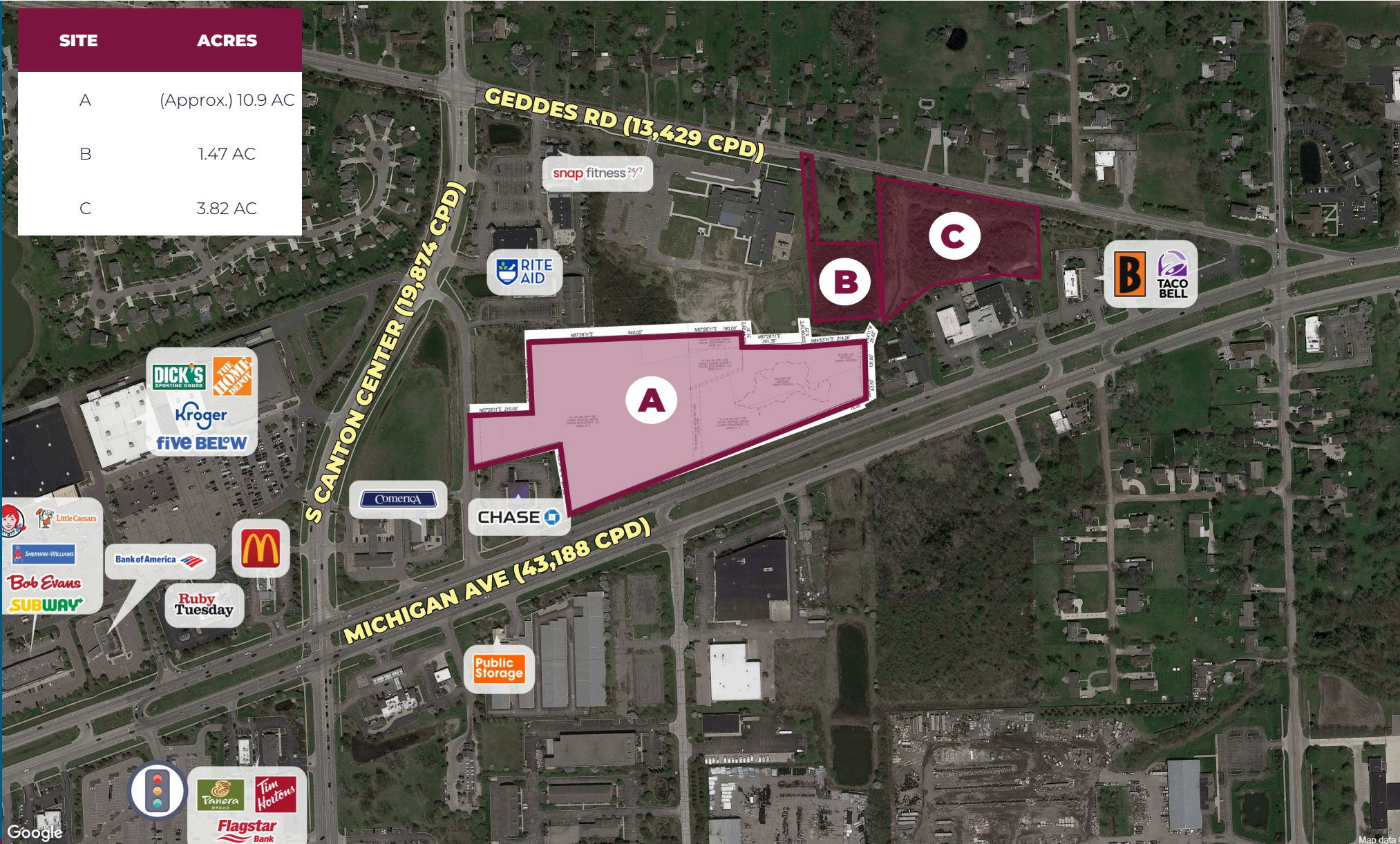


## HIGHLIGHTS

- Up to 16 AC of Land Available
- 1,000 Feet Of Frontage Along Michigan Ave
- Multiple Outparcels Available

# MICRO AERIAL

SITE	ACRES
A	(Approx.) 10.9 AC
B	1.47 AC
C	3.82 AC



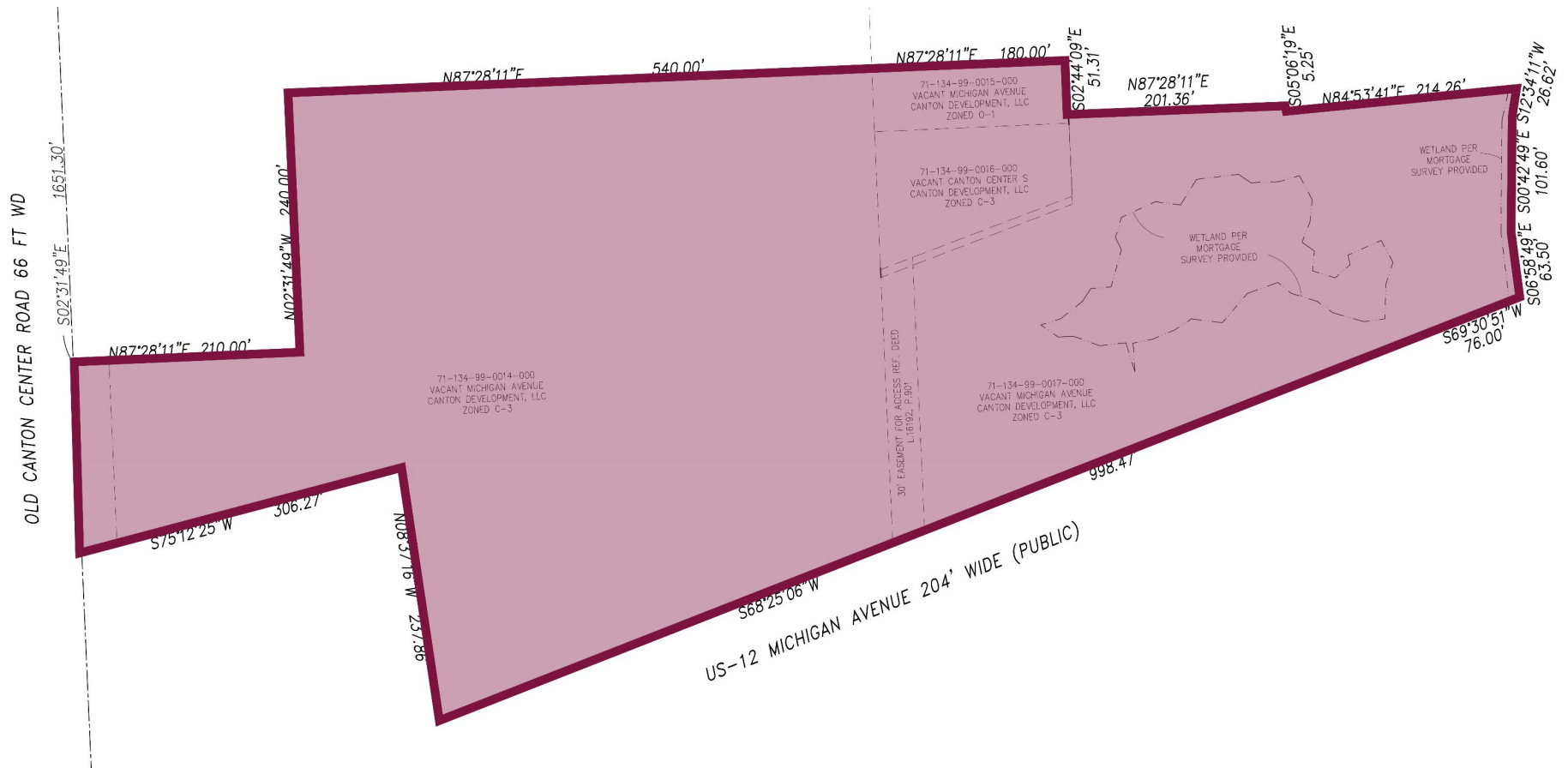
# MACRO AERIAL

SITE	ACRES
A	(Approx.) 10.9 AC
B	1.47 AC
C	3.82 AC



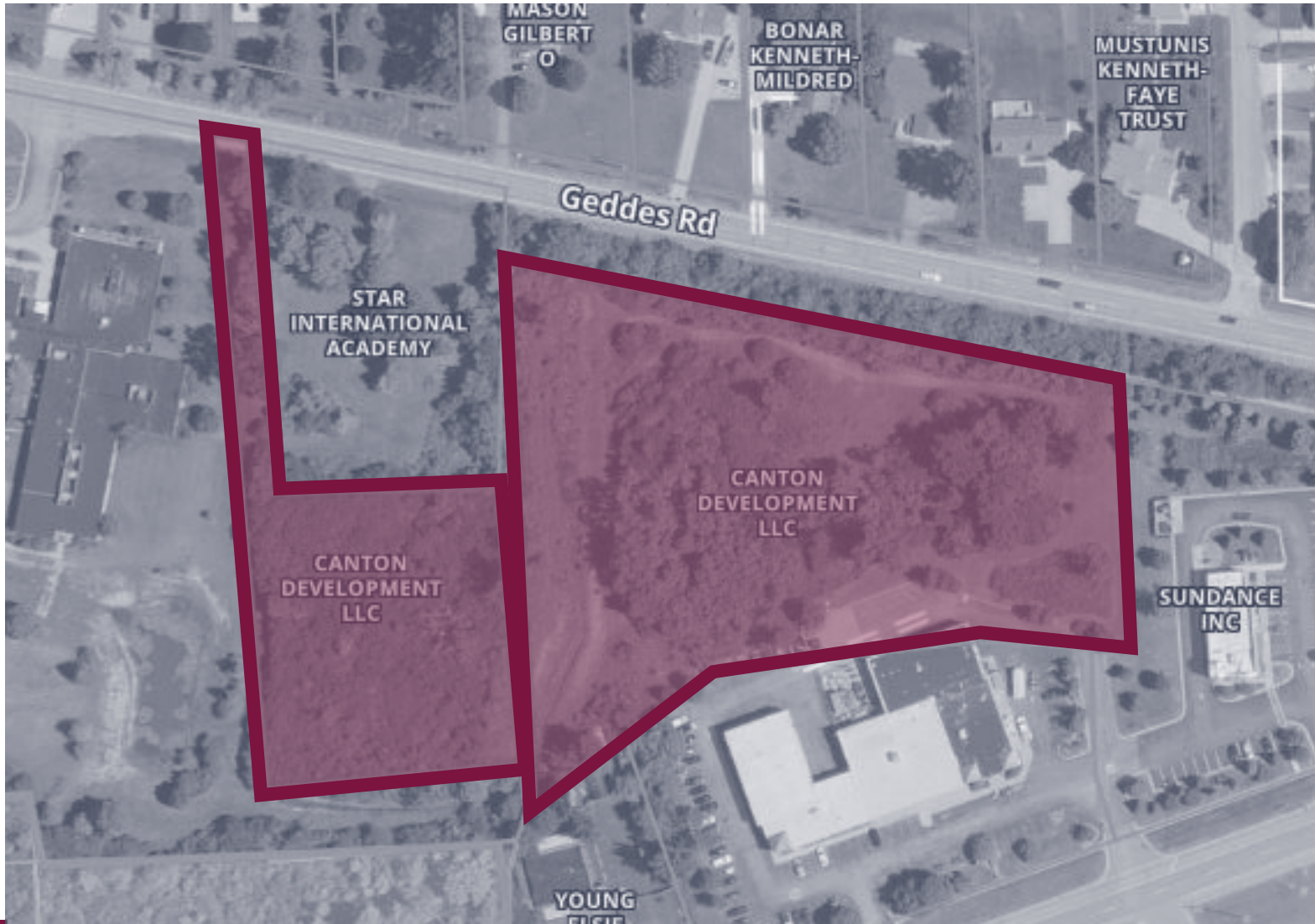
# BASE MAP

**VACANT LAND**  
Michigan Ave & Old Canton Center Rd  
Canton, MI 48188



# BASE MAP

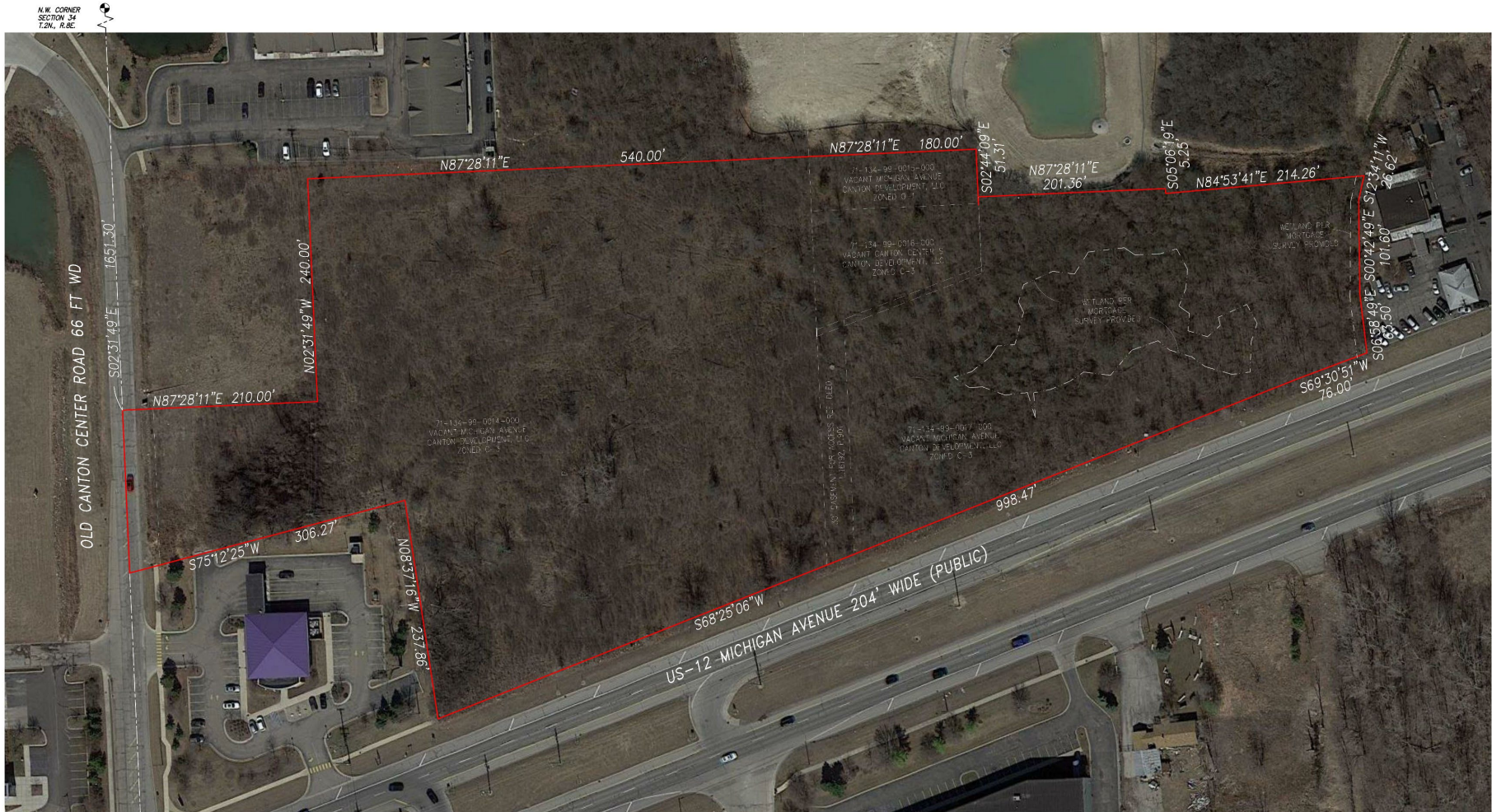
**VACANT LAND**  
Michigan Ave & Old Canton Center Rd  
Canton, MI 48188



# CONCEPT MAP

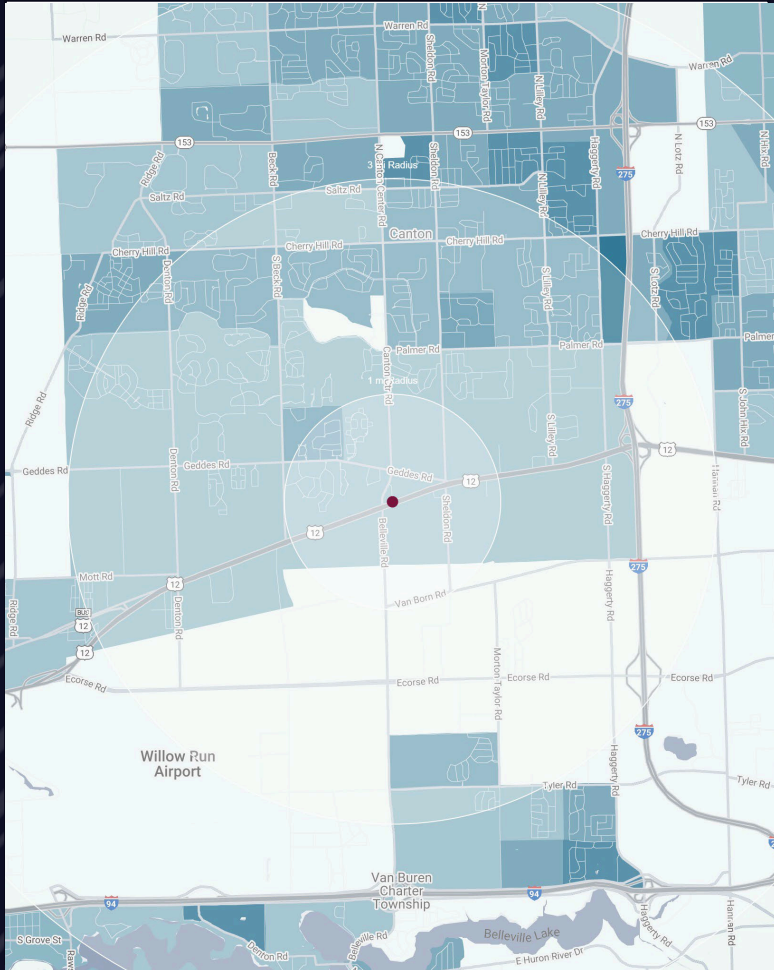
**VACANT LAND**  
Michigan Ave & Old Canton Center Rd  
Canton, MI 48188

**MICHIGAN AVE./CANTON CENTER**  
PART OF THE NORTHWEST 1/4 OF SECTION 34,  
TOWN 2 SOUTH, RANGE 8 EAST,  
CANTON TOWNSHIP, WAYNE COUNTY, MICHIGAN



RASE MAP

# DEMOGRAPHICS



## VACANT LAND

Michigan Ave & Old Canton Center Rd  
Canton, MI 48188

# DEMOGRAPHICS

## POPULATION

	1 MILE	3 MILE	5 MILE
2022 Estimated Population	3,555	50,747	141,983
2027 Projected Population	3,473	49,685	139,414
2020 Census Population	3,709	51,169	142,737
2010 Census Population	3,881	47,465	132,381
Projected Annual Growth 2022 to 2027	-0.5%	-0.4%	-0.4%
Historical Annual Growth 2010 to 2022	-0.7%	0.6%	0.6%

## HOUSEHOLDS

2022 Estimated Households	1,368	18,929	54,923
2027 Projected Households	1,348	18,692	54,445
2020 Census Households	1,426	19,050	55,210
2010 Census Households	1,484	17,453	50,265
Projected Annual Growth 2022 to 2027	-0.3%	-0.3%	-0.2%
Historical Annual Growth 2010 to 2022	-0.3%	-	-

## RACE

2022 Est. White	52.2%	55.8%	59.7%
2022 Est. Black	24.2%	18.6%	18.5%
2022 Est. Asian or Pacific Islander	17.2%	17.4%	12.9%
2022 Est. American Indian or Alaska Native	0.3%	0.3%	0.3%
2022 Est. Other Races	6.2%	8.0%	8.5%

## INCOME

2022 Est. Average Household Income	\$118,464	\$115,524	\$100,757
2022 Est. Median Household Income	\$90,478	\$94,116	\$84,961
2022 Est. Per Capita Income	\$45,726	\$43,121	\$39,025

## BUSINESS

2022 Est. Total Businesses	270	1,168	3,769
2022 Est. Total Employees	2,979	13,492	40,414



## CONTACT US



**GORDON S.  
HYDE**

*Senior Associate*

*ghyde@landmarkcres.com*  
**248 488 2620**

**LANDMARK**  
COMMERCIAL ▲ REAL ESTATE ▲ SERVICES

30500 Northwestern Hwy, Suite 200  
Farmington Hills, MI 48334  
248.488.2620  
[landmarkcres.com](http://landmarkcres.com)

LANDMARK COMMERCIAL REAL ESTATE SERVICES – Licensed Real Estate Brokers. The information above has been obtained from sources believed reliable. While we do not doubt its accuracy, we have not verified it and make no guarantee, warranty or representation about it. It is your responsibility to independently confirm its accuracy and completeness. Any projections, opinions, assumptions or estimates are used for example only and do not represent the current or future performance of the property. The value of this transaction to you depends on tax and other factors which should be evaluated by your tax, financial and legal advisors. You and your advisors should conduct a careful, independent investigation of the property to determine to your satisfaction, the suitability of the property for your needs.