

FOR LEASE

NEW DEVELOPMENT- CHERRY HILL PLAZA

49920 CHERRY HILL CANTON, MI



PROPERTY DETAILS

LOCATION:	49920 Cherry Hill, Canton, MI
PROPERTY TYPE:	Shopping Center
DATE AVAILABLE:	Q4 (2023)
RENT:	\$35.00/SF
NNN EXPENSE:	\$5.50/SF (Estimated)
BUILDING SIZE:	10,883 SF
BUILDING DIMENSIONS:	85.4' X 156.4'
AVAILABLE SPACE:	1,500-10,883 SF
GROSS LEASABLE AREA:	21,766 SF
LOT SIZE:	1.27 AC
ZONING:	C-3 Commercial
TRAFFIC COUNT:	Cherry Hill Rd (9,756 CPD)

\$35.00/SF

\$5.50/SF
(Estimated)

RENT

NNN

DESCRIPTION

- New Multi-Tenant Strip Located on Cherry Hill Rd, in Downtown Canton. The Site is Located just East of Ridge Rd.
- Located Directly across from Cherry Hill Village, which Features more than 500 Homes and Condos.
- 656 Apartments and Condo's Directly Behind the Site.
- Possible Drive Thru Available.
- 2nd Floor- Multi Family & Office Available.

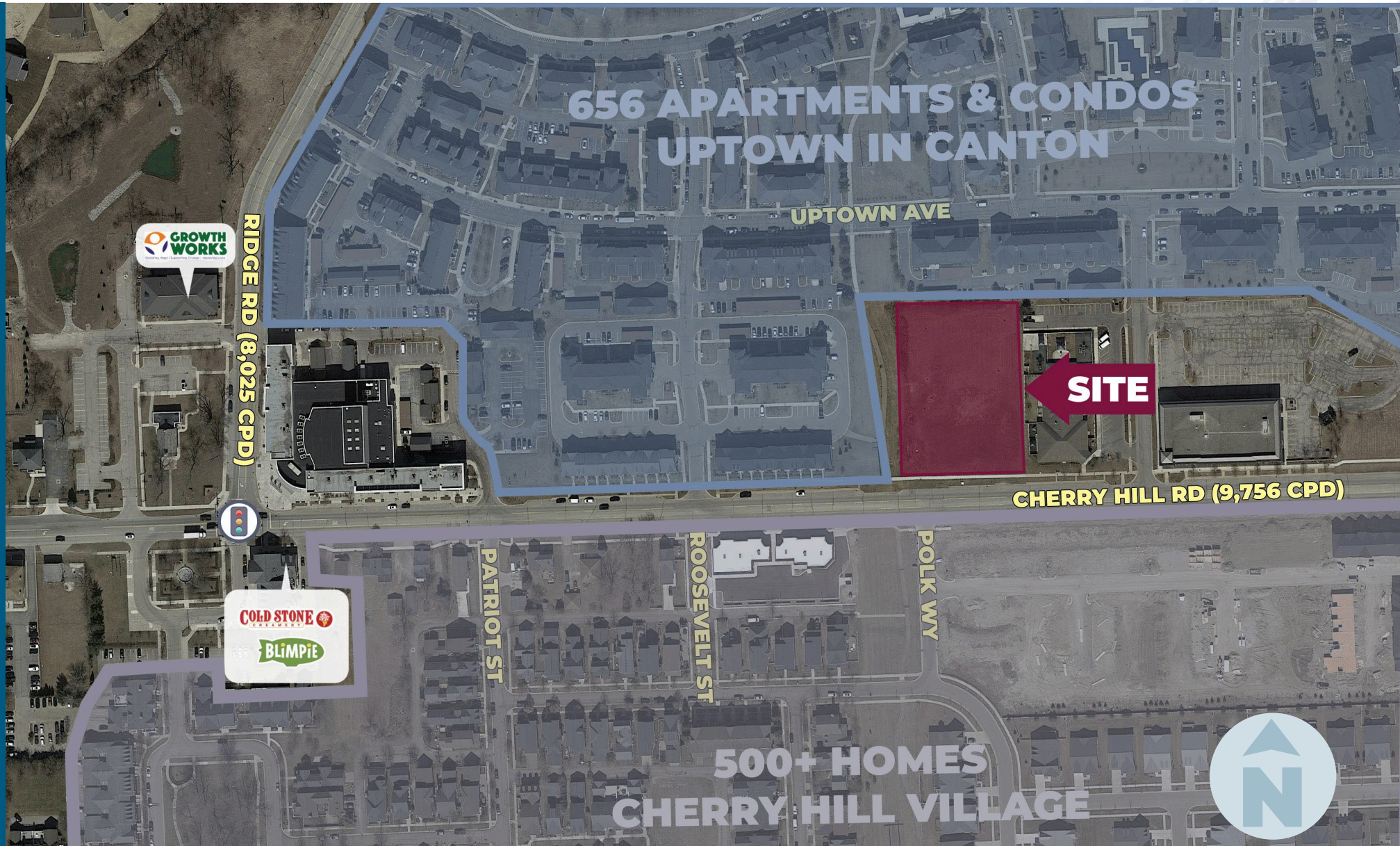
EXCLUSIVELY LISTED BY:



**GORDON S.
HYDE**

Senior Associate
ghyde@landmarkres.com
248 488 2620

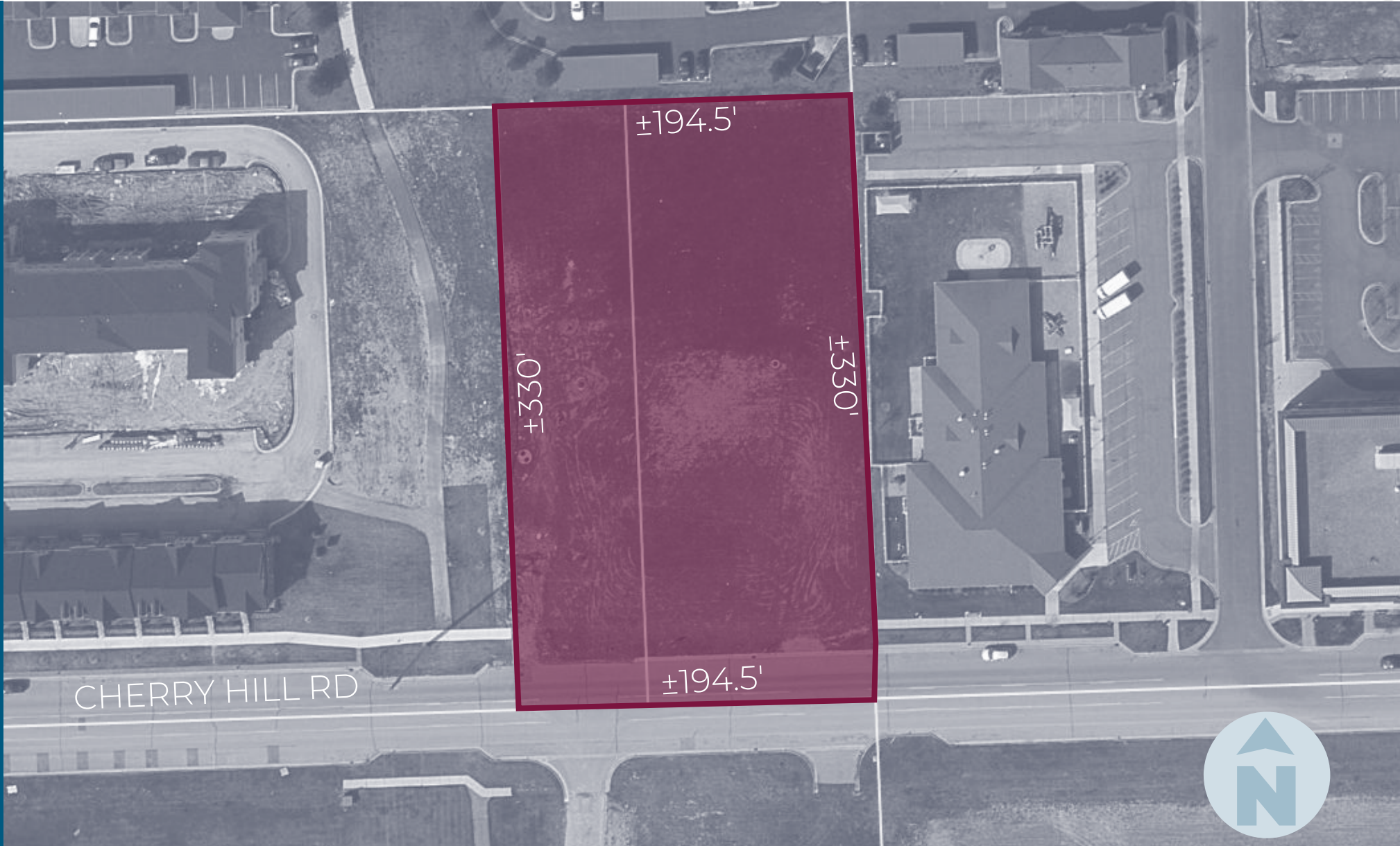
MICRO AERIAL



MACRO AERIAL



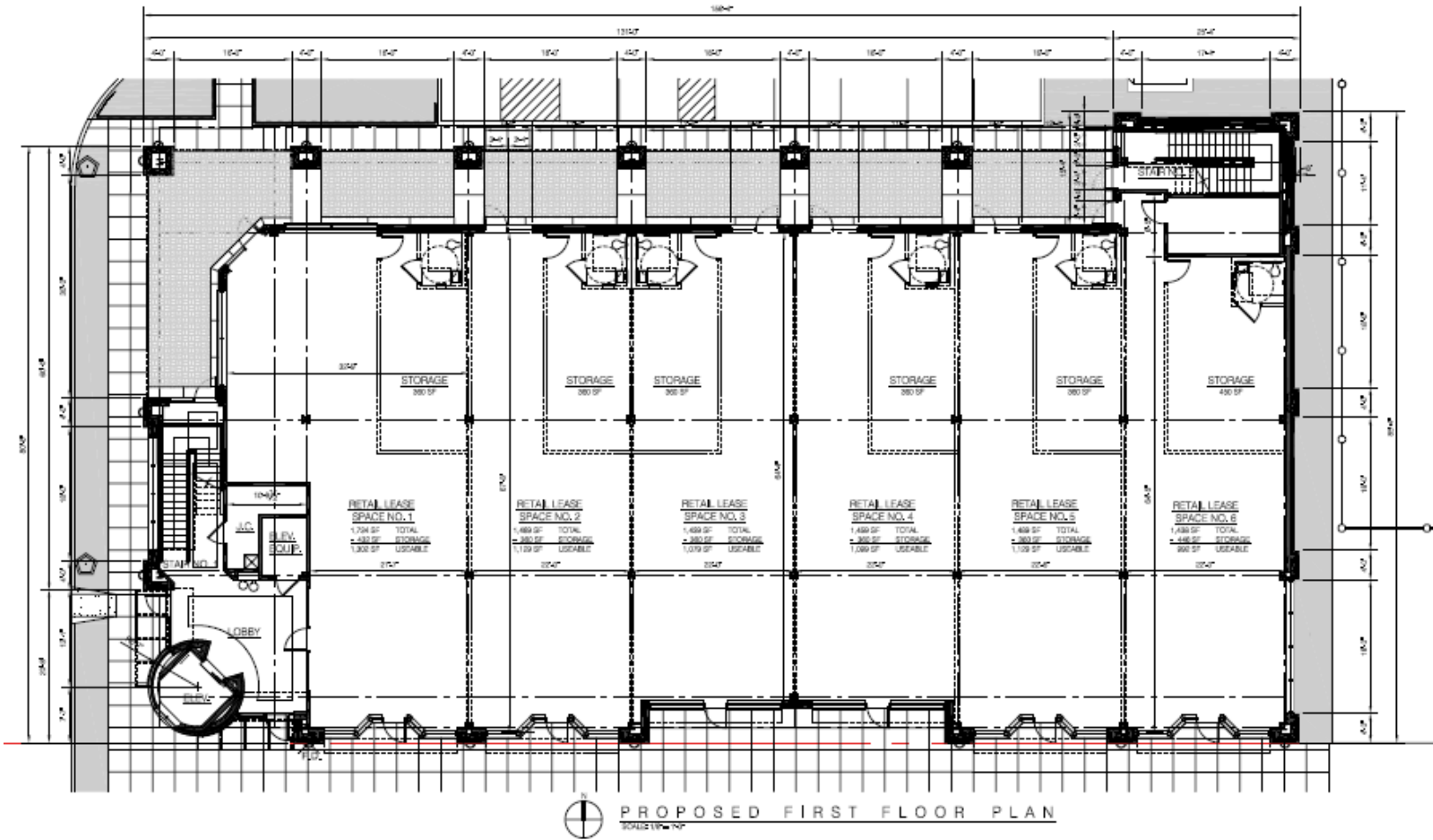
PLAT



FLOOR PLANS (FIRST FLOOR)

CHERRY HILL PLAZA

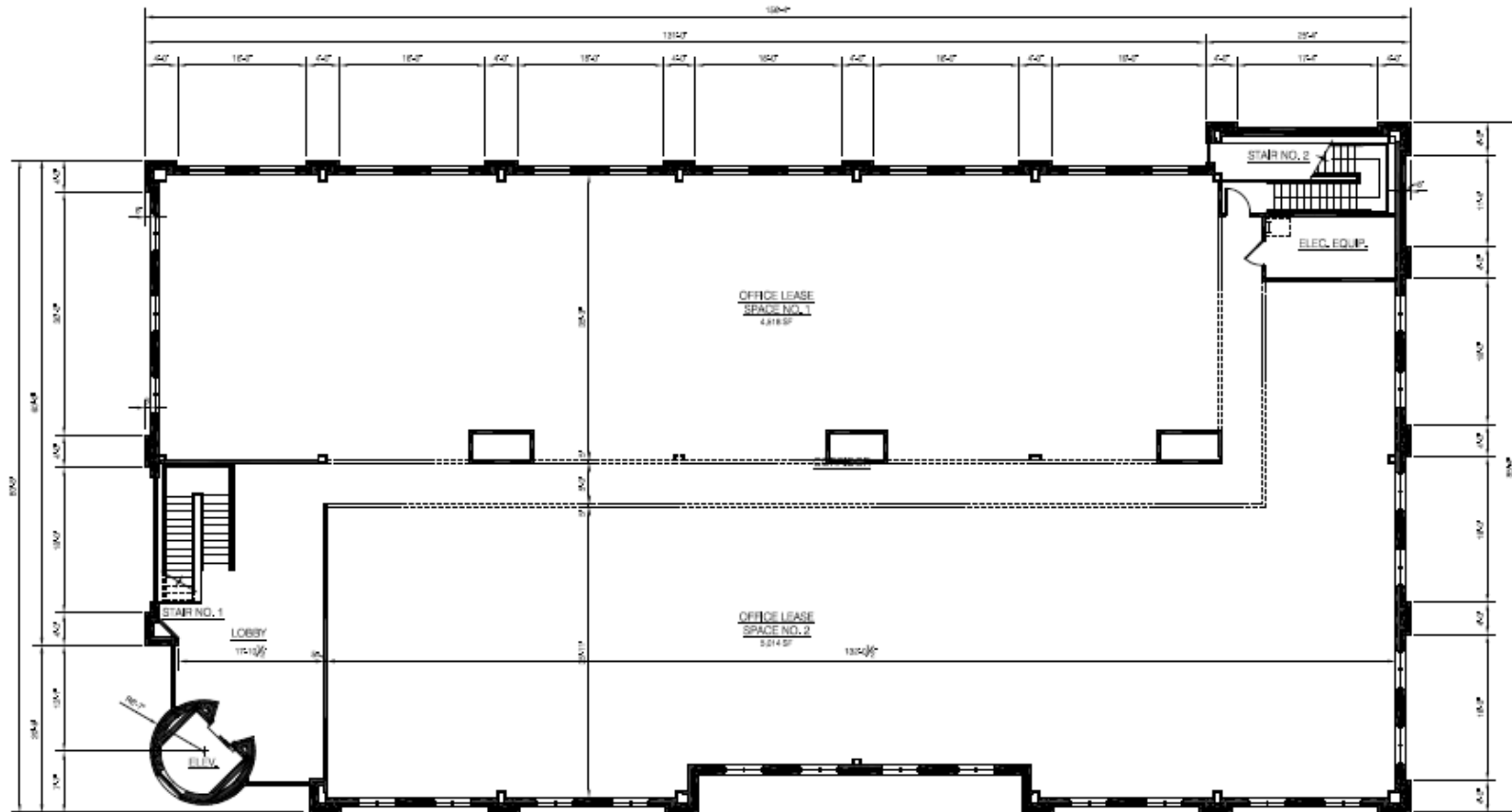
49920 Cherry Hill Rd,
Canton, MI



FLOOR PLANS (SECOND FLOOR)

CHERRY HILL PLAZA

49920 Cherry Hill Rd,
Canton, MI



PROPOSED SECOND FLOOR PLAN

SCALE: 1/8" = 1'-0"



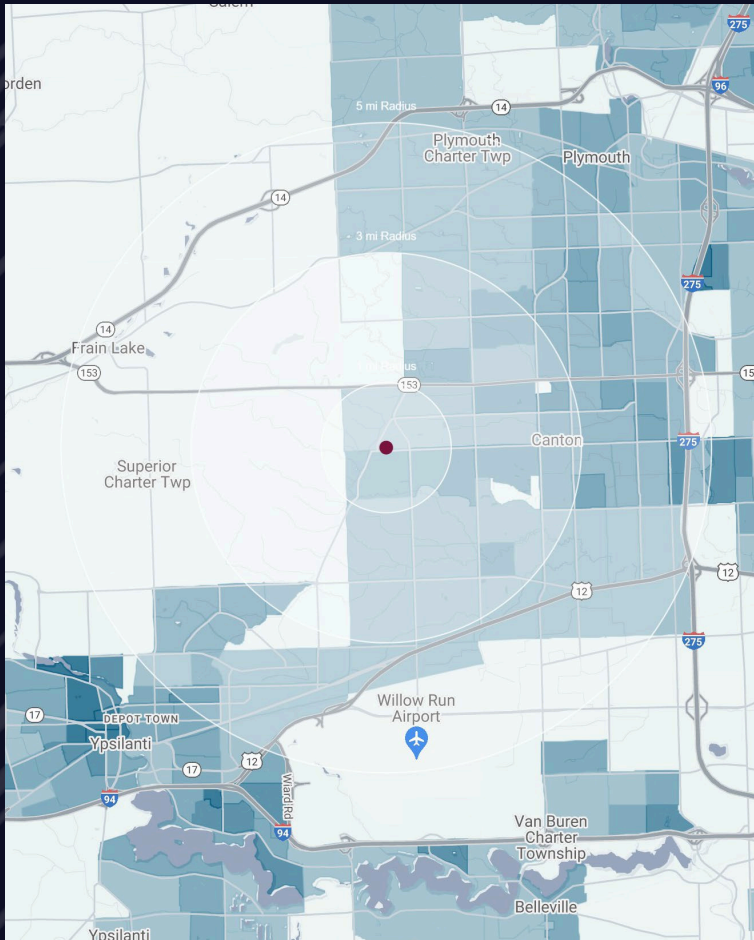
SITE PLANS

CHERRY HILL PLAZA

49920 Cherry Hill Rd,
Canton, MI



DEMOGRAPHICS



CHERRY HILL PLAZA

49920 Cherry Hill,
Canton, MI

DEMOGRAPHICS

POPULATION

	1 MILE	3 MILE	5 MILE
2023 Estimated Population	9,201	49,708	127,124
2028 Projected Population	10,604	56,132	134,108
2020 Census Population	8,390	47,245	126,224
2010 Census Population	4,931	39,698	116,101
Projected Annual Growth 2023 to 2028	3.0%	2.6%	1.1%
Historical Annual Growth 2010 to 2023	6.7%	1.9%	0.7%

HOUSEHOLDS

2023 Estimated Households	3,225	18,160	48,466
2028 Projected Households	3,787	20,940	51,975
2020 Census Households	2,796	16,369	46,738
2010 Census Households	1,526	13,575	42,451
Projected Annual Growth 2023 to 2028	3.5%	3.1%	1.4%
Historical Annual Growth 2010 to 2023	8.6%	2.6%	1.1%

RACE

2023 Est. White	57.1%	59.0%	62.2%
2023 Est. Black	16.9%	17.3%	18.7%
2023 Est. Asian or Pacific Islander	20.1%	17.8%	12.4%
2023 Est. American Indian or Alaska Native	0.2%	0.2%	0.2%
2023 Est. Other Races	5.7%	5.7%	6.3%

INCOME

2023 Est. Average Household Income	\$185,670	\$167,877	\$151,700
2023 Est. Median Household Income	\$175,120	\$143,008	\$116,131
2023 Est. Per Capita Income	\$65,078	\$61,352	\$57,872

BUSINESS

2023 Est. Total Businesses	134	1,038	3,316
2023 Est. Total Employees	678	6,954	29,390

CONTACT US



**GORDON S.
HYDE**

Senior Associate

ghyde@landmarkcres.com

248 488 2620

LANDMARK
COMMERCIAL ▲ REAL ESTATE ▲ SERVICES

30500 Northwestern Hwy, Suite 200
Farmington Hills, MI 48334
248.488.2620
landmarkcres.com

LANDMARK COMMERCIAL REAL ESTATE SERVICES – Licensed Real Estate Brokers. The information above has been obtained from sources believed reliable. While we do not doubt its accuracy, we have not verified it and make no guarantee, warranty or representation about it. It is your responsibility to independently confirm its accuracy and completeness. Any projections, opinions, assumptions or estimates are used for example only and do not represent the current or future performance of the property. The value of this transaction to you depends on tax and other factors which should be evaluated by your tax, financial and legal advisors. You and your advisors should conduct a careful, independent investigation of the property to determine to your satisfaction, the suitability of the property for your needs.