

FOR LEASE

# HUNTER PARK PLAZA & VACANT PAD

32838-32888 WARREN RD, WESTLAND, MI



# PROPERTY DETAILS

**LOCATION:** 32838-32888 Warren Rd,  
Westland, MI

**PROPERTY TYPE:** Shopping Center

**DATE AVAILABLE:** November 1<sup>st</sup>, 2022

**RENT:** \$15.00/ SF

**NNN EXPENSE:** \$5.00/ SF

**LOT SIZE:** 1.5 AC (BTS/Sale)

**LOT DIMENSIONS:** 270' X 249'

**AVAILABLE SPACE:** PLAZA (A) 1,260 – 10,880 SF  
PLAZA (B) 1,260 – 3,780 SF  
PAD SITE (C) 1.5 AC

**ZONING:** C-3

**TRAFFIC COUNT:** Warren Rd (21,817 CPD)

\$15.00/SF

\$5.00/SF

**RENT**

**NNN**

## TENANT ROSTER



## HIGHLIGHTS

- Located on the corner of N. Venoy and Warren Rd
- The center consists of 29,561 SF among three separate buildings
- Spaces ranging from 1,260 SF- 10,880 SF
- An approximate 1.5 Acre parcel is also available for sale or a build-to-suit

### EXCLUSIVELY LISTED BY:

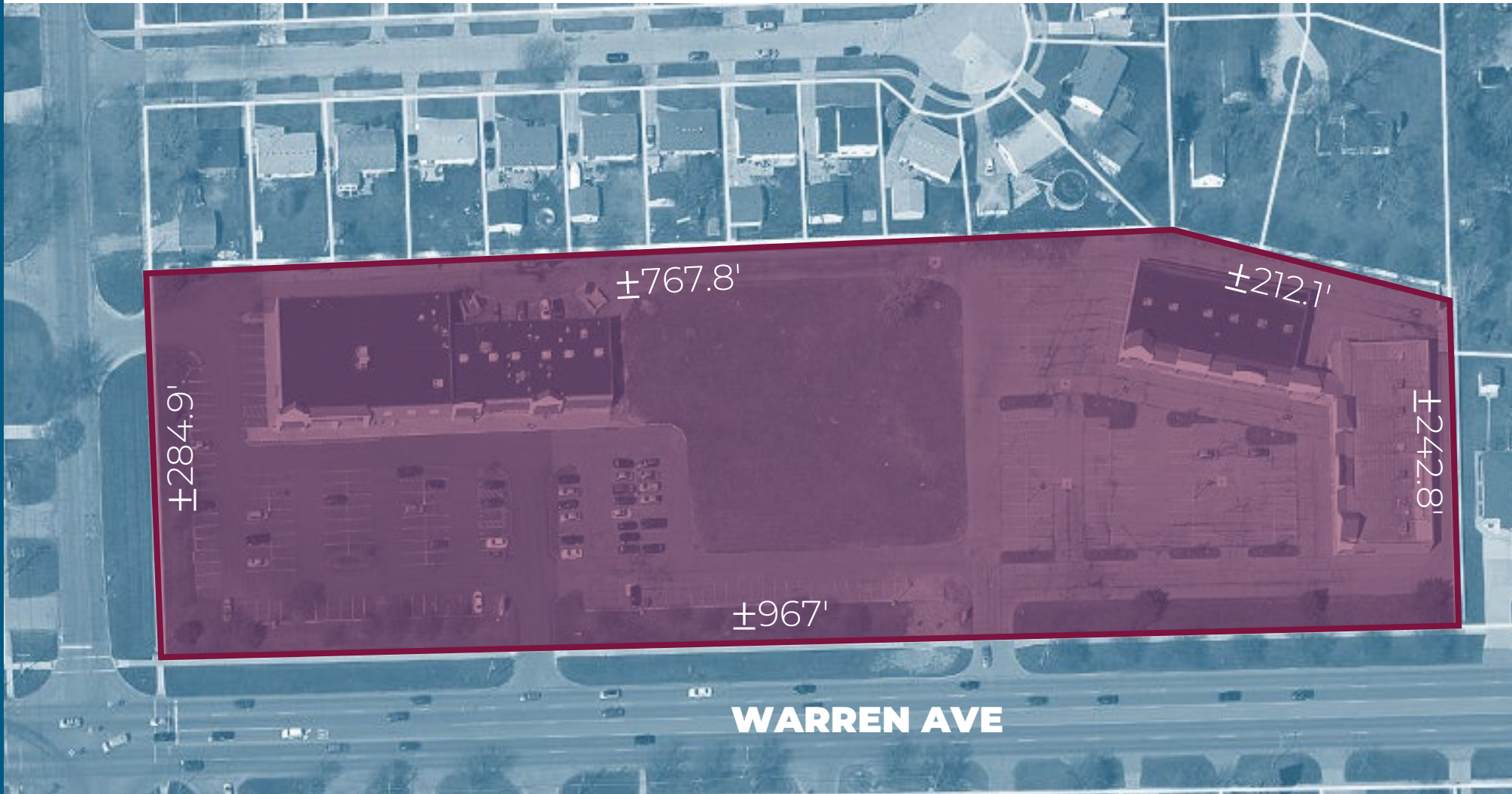


**GORDON S. HYDE**  
Senior Associate  
[ghyde@landmarkcres.com](mailto:ghyde@landmarkcres.com)  
248 488 2620



**ANTHONY J. VITALE**  
Director  
[avitale@landmarkcres.com](mailto:avitale@landmarkcres.com)  
248 488 2620

# PLAT



# MICRO AERIAL





# VIEW NORTHEAST



# VIEW NORTH – PLAZA A



# VIEW NORTHEAST – PLAZA B





# VIEW NORTHWEST



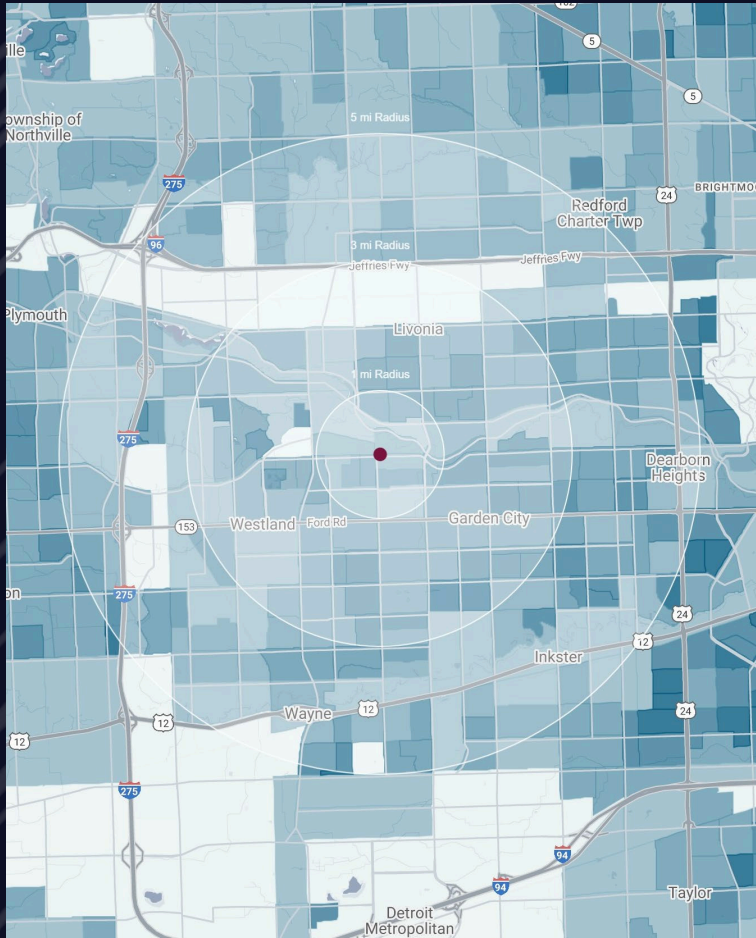
# VIEW SOUTHWEST



# VIEW EAST



# DEMOGRAPHICS



## HUNTER PARK PLAZA

32838-32888 W. Warren Ave,  
Westland, MI

# DEMOGRAPHICS

### POPULATION

	1 MILE	3 MILE	5 MILE
2023 Estimated Population	14,569	131,902	316,070
2028 Projected Population	13,714	124,437	303,433
2020 Census Population	15,263	137,012	322,865
2010 Census Population	14,538	132,501	316,717
Projected Annual Growth 2023 to 2028	-1.2%	-1.1%	-0.8%
Historical Annual Growth 2010 to 2023	-	-	-

### HOUSEHOLDS

2023 Estimated Households	6,069	51,807	127,851
2028 Projected Households	5,810	49,766	125,347
2020 Census Households	6,309	53,912	129,817
2010 Census Households	6,098	52,288	126,321
Projected Annual Growth 2023 to 2028	-0.9%	-0.8%	-0.4%
Historical Annual Growth 2010 to 2023	-	-	-

### RACE

2023 Est. White	75.0%	66.9%	59.9%
2023 Est. Black	16.3%	24.5%	30.9%
2023 Est. Asian or Pacific Islander	2.2%	2.4%	2.7%
2023 Est. American Indian or Alaska Native	0.3%	0.3%	0.3%
2023 Est. Other Races	6.2%	6.0%	6.3%

### INCOME

2023 Est. Average Household Income	\$78,371	\$94,802	\$87,669
2023 Est. Median Household Income	\$60,451	\$69,073	\$64,405
2023 Est. Per Capita Income	\$32,691	\$37,287	\$35,579

### BUSINESS

2023 Est. Total Businesses	312	3,751	9,812
2023 Est. Total Employees	4,476	37,242	94,933

## CONTACT US



**GORDON S.  
HYDE**

*Senior Associate*

*ghyde@landmarkcres.com*

**248 488 2620**



**ANTHONY J.  
VITALE**

*Director*

*avitale@landmarkcres.com*

**248 488 2620**

**LANDMARK**  
COMMERCIAL ▲ REAL ESTATE ▲ SERVICES

30500 Northwestern Hwy, Suite 200  
Farmington Hills, MI 48334  
248.488.2620  
[landmarkcres.com](http://landmarkcres.com)

LANDMARK COMMERCIAL REAL ESTATE SERVICES – Licensed Real Estate Brokers. The information above has been obtained from sources believed reliable. While we do not doubt its accuracy, we have not verified it and make no guarantee, warranty or representation about it. It is your responsibility to independently confirm its accuracy and completeness. Any projections, opinions, assumptions or estimates are used for example only and do not represent the current or future performance of the property. The value of this transaction to you depends on tax and other factors which should be evaluated by your tax, financial and legal advisors. You and your advisors should conduct a careful, independent investigation of the property to determine to your satisfaction, the suitability of the property for your needs.