

FOR SALE

ROYAL OAK OPPORTUNITY- VACANT LAND

SEC OF WEST 13 MILE RD AND PRAIRIE AVE, ROYAL OAK, MI



PROPERTY DETAILS

LOCATION: SEC of West 13 Mile Rd and Prairie Ave,
Royal Oak, MI

PROPERTY TYPE: Vacant Land

SALES PRICE: \$200,000.00

LOT SIZE: 0.27 AC

ZONING: Neighborhood Business

TRAFFIC COUNT: 13 Mile Rd (29,002 CPD)
Greenfield Rd (28,087 CPD)

\$200,000.00

SALES PRICE

HIGHLIGHTS

- Situated in a densely populated area in the heart of Royal Oak, MI.
- The property is located in close proximity to Beaumont Hospital and the highly in demand intersection of 13 Mile Rd and Woodward Ave.
- Corner lot with great accessibility and visibility.
- The site is development ready with many possible uses.

EXCLUSIVELY LISTED BY:



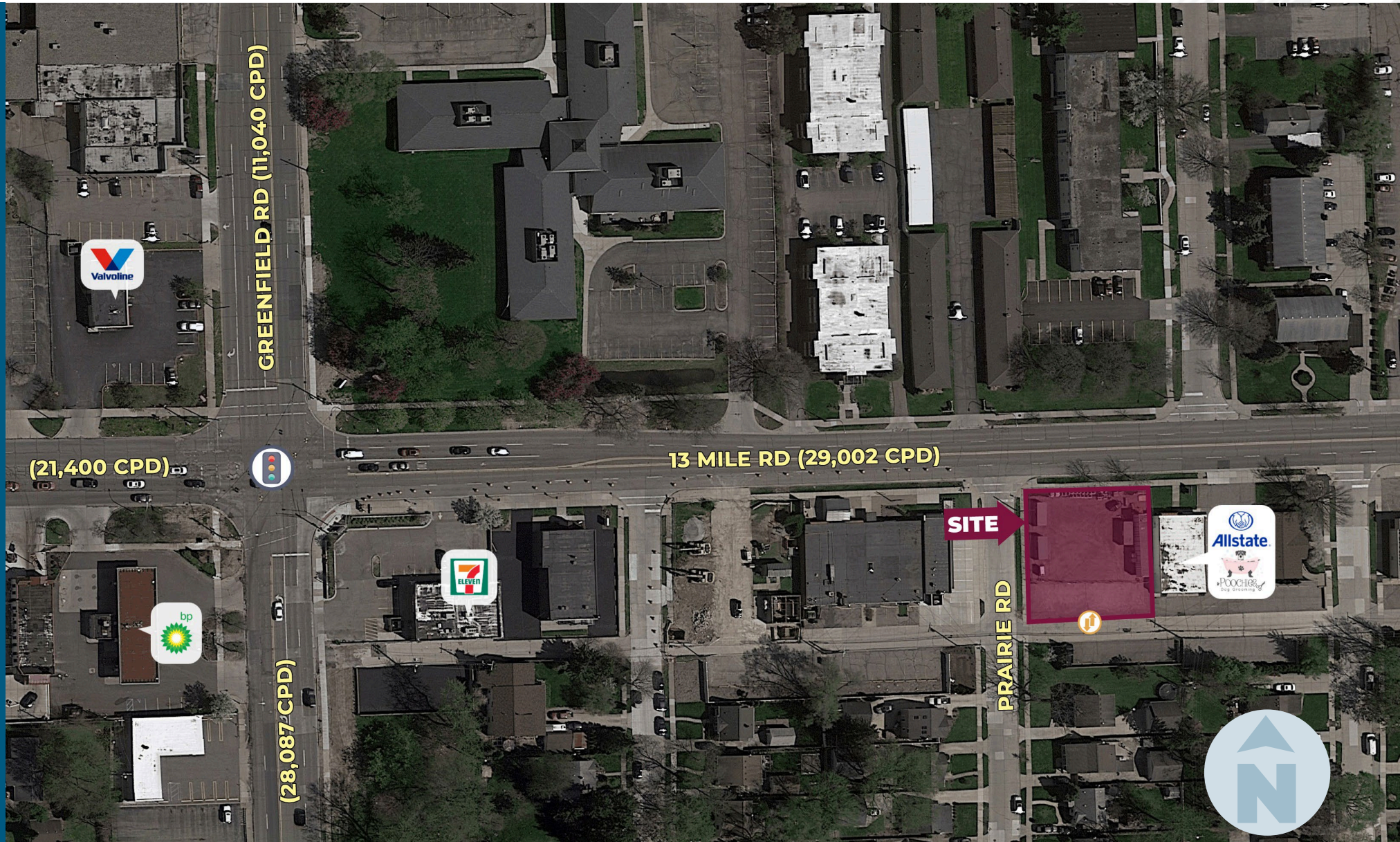
**ANTHONY J.
VITALE**

Director

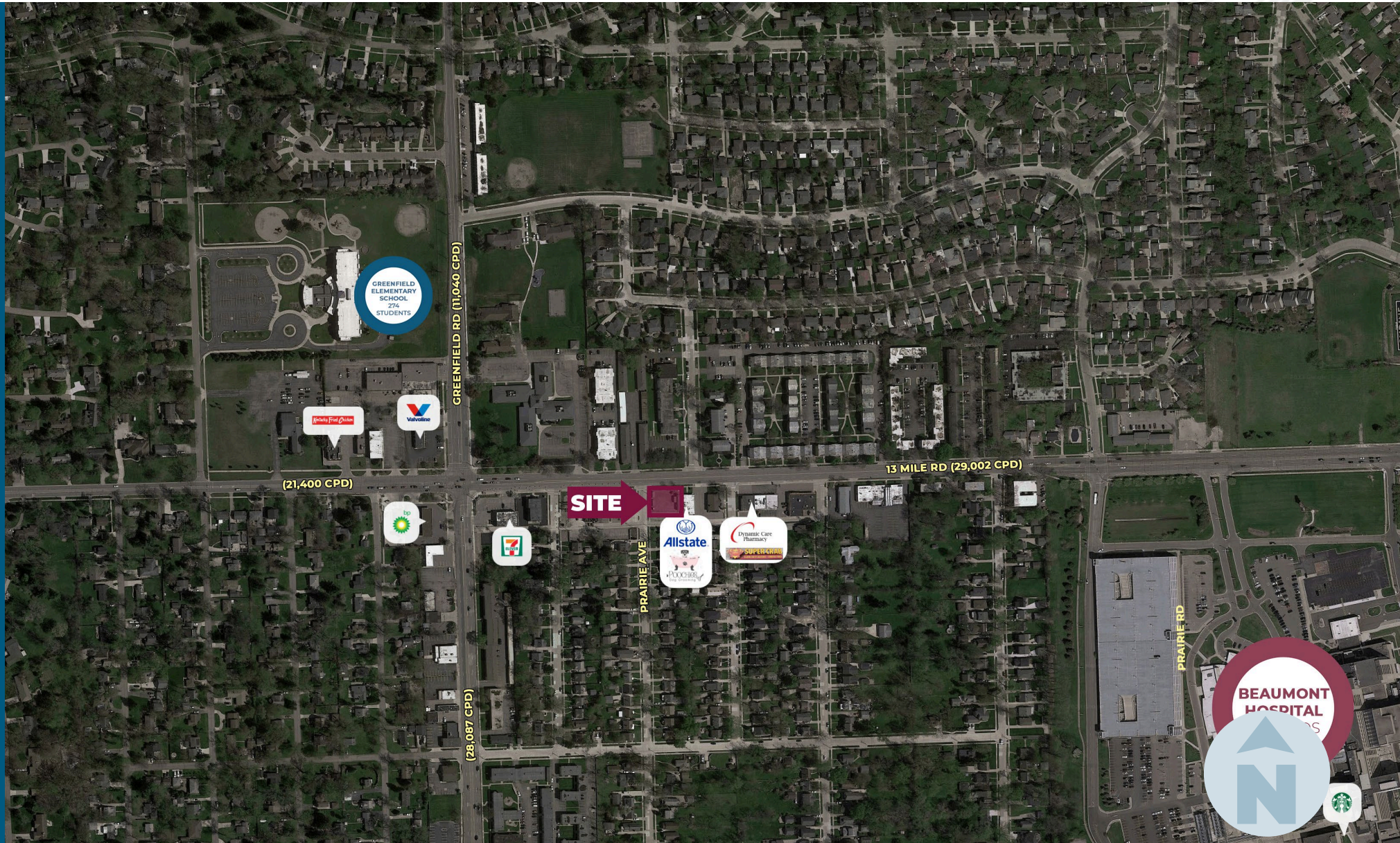
avitale@landmarkcres.com

248 488 2620

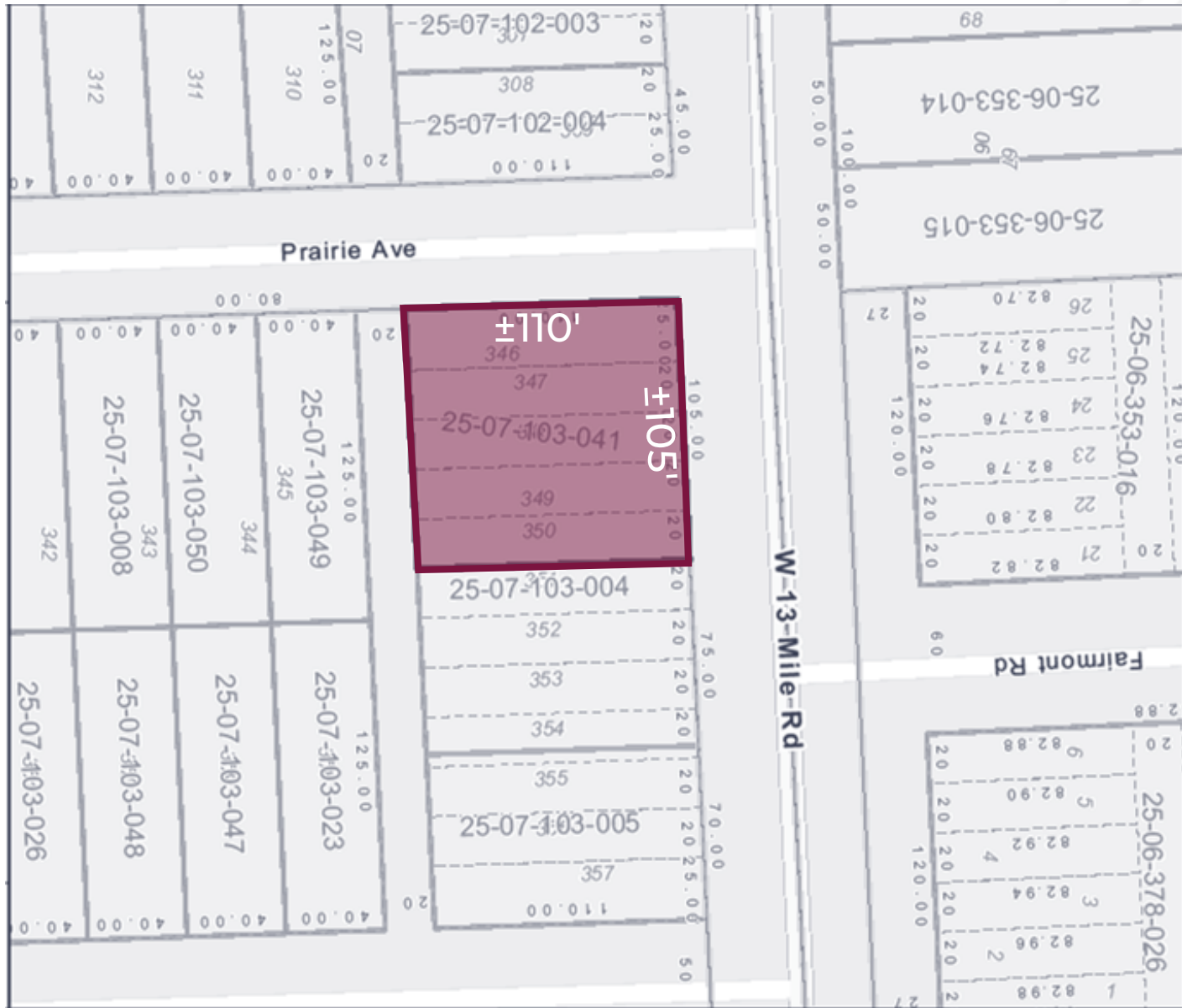
MICRO AERIAL



MACRO AERIAL



PLAT



DEMOGRAPHICS



ROYAL OAK OPPORTUNITY- VACANT LAND

SEC of West 13 Mile Rd and Prairie Ave,
Royal Oak, MI

DEMOGRAPHICS

POPULATION

	1 MILE	3 MILE	5 MILE
2023 Estimated Population	14,268	119,958	271,971
2028 Projected Population	13,404	111,561	257,347
2020 Census Population	14,329	123,165	277,883
2010 Census Population	14,085	118,842	268,810
Projected Annual Growth 2023 to 2028	-1.2%	-1.4%	-1.1%
Historical Annual Growth 2010 to 2023	-	-	-

HOUSEHOLDS

2023 Estimated Households	6,492	53,779	121,295
2028 Projected Households	6,056	49,714	114,330
2020 Census Households	6,573	55,600	123,913
2010 Census Households	6,335	53,034	117,436
Projected Annual Growth 2023 to 2028	-1.3%	-1.5%	-1.1%
Historical Annual Growth 2010 to 2023	0.2%	0.1%	0.3%

RACE

2023 Est. White	76.0%	73.3%	66.4%
2023 Est. Black	15.0%	16.4%	22.1%
2023 Est. Asian or Pacific Islander	4.7%	6.0%	7.3%
2023 Est. American Indian or Alaska Native	0.1%	0.1%	0.1%
2023 Est. Other Races	4.2%	4.1%	4.1%

INCOME

2023 Est. Average Household Income	\$133,611	\$159,790	\$152,861
2023 Est. Median Household Income	\$95,607	\$111,943	\$108,664
2023 Est. Per Capita Income	\$60,864	\$71,697	\$68,293

BUSINESS

2023 Est. Total Businesses	674	7,606	20,280
2023 Est. Total Employees	5,171	75,250	251,488

CONTACT US



**ANTHONY J.
VITALE**

Director

avitale@landmarkcres.com

248 488 2620

LANDMARK
COMMERCIAL ▲ REAL ESTATE ▲ SERVICES

30500 Northwestern Hwy, Suite 200
Farmington Hills, MI 48334
248.488.2620
landmarkcres.com

LANDMARK COMMERCIAL REAL ESTATE SERVICES – Licensed Real Estate Brokers. The information above has been obtained from sources believed reliable. While we do not doubt its accuracy, we have not verified it and make no guarantee, warranty or representation about it. It is your responsibility to independently confirm its accuracy and completeness. Any projections, opinions, assumptions or estimates are used for example only and do not represent the current or future performance of the property. The value of this transaction to you depends on tax and other factors which should be evaluated by your tax, financial and legal advisors. You and your advisors should conduct a careful, independent investigation of the property to determine to your satisfaction, the suitability of the property for your needs.