

FOR SALE
FORMER SCHOOL
110 PEARL ST, OSCODA, MI 48750



PROPERTY DETAILS

LOCATION:	110 Pearl St, Oscoda, MI 48750	
PROPERTY TYPE:	Vacant Land	
DATE AVAILABLE:	Immediately	
SALE PRICE:	\$199,000.00	
BUILDING SIZE:	44,000 SF	
AVAILABLE SPACE:	44,000 SF	
	1 st Floor	22,000 SF
	2 nd Floor	22,000 SF
LOT SIZE:	0.90 AC	
LOT DIMENSIONS:	132' X 297'	

0.90 AC

\$199,000.00

LOT SIZE

SALE PRICE

HIGHLIGHTS

- Former school located in Oscoda, MI
- The subject site is just off of State St (US-23)
- The building is 44,000 SF and consists of 2 floors, each floor being 22,000 SF.
- The site is located less than ¼ Mile from Lake Huron.
- Excellent opportunity for a affordable housing, condos, or hotel.

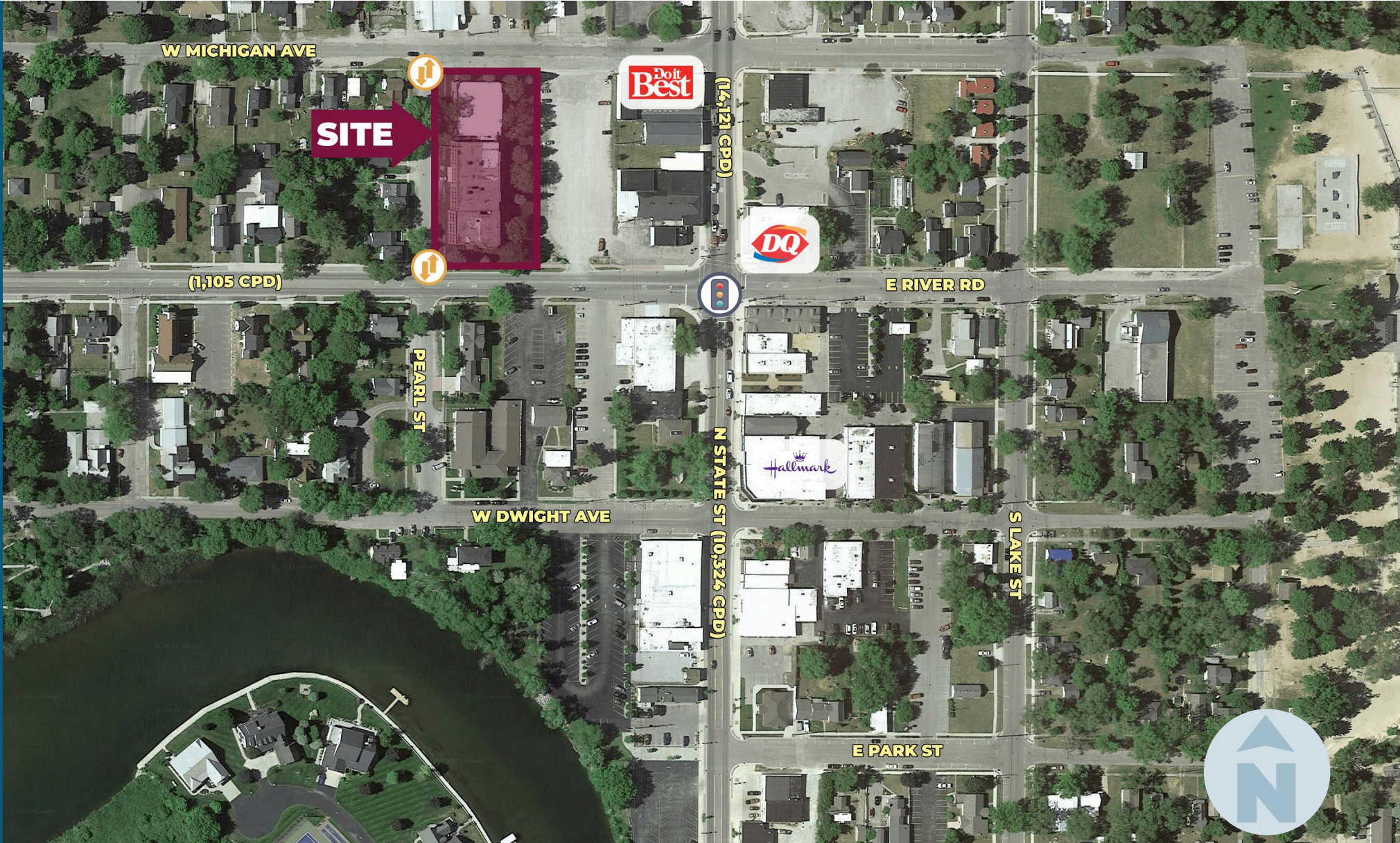
EXCLUSIVELY LISTED BY:



**GORDON S.
HYDE**

Director
ghyde@landmarkcres.com
248 488 2620

MICRO AERIAL



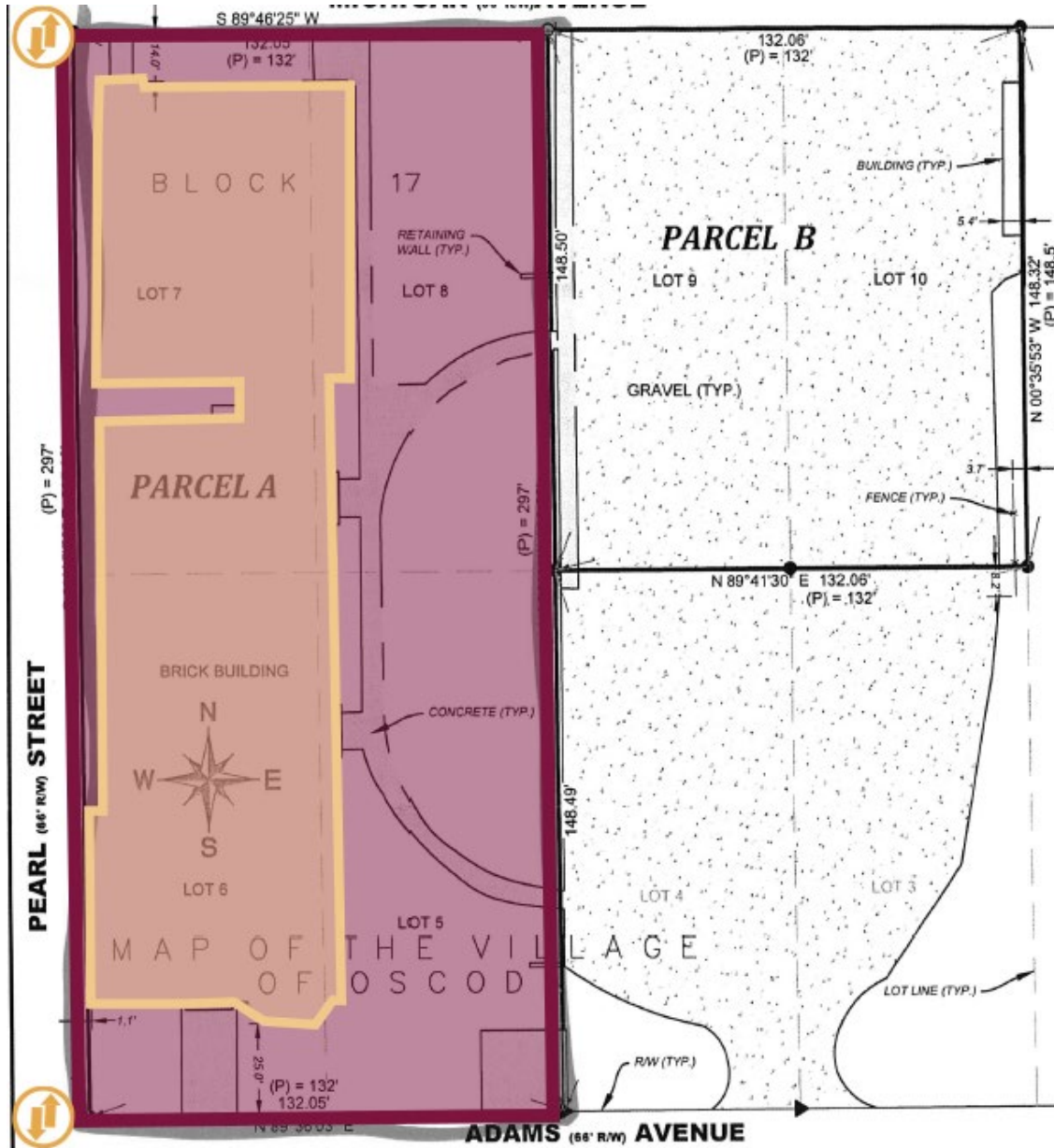
MACRO AERIAL



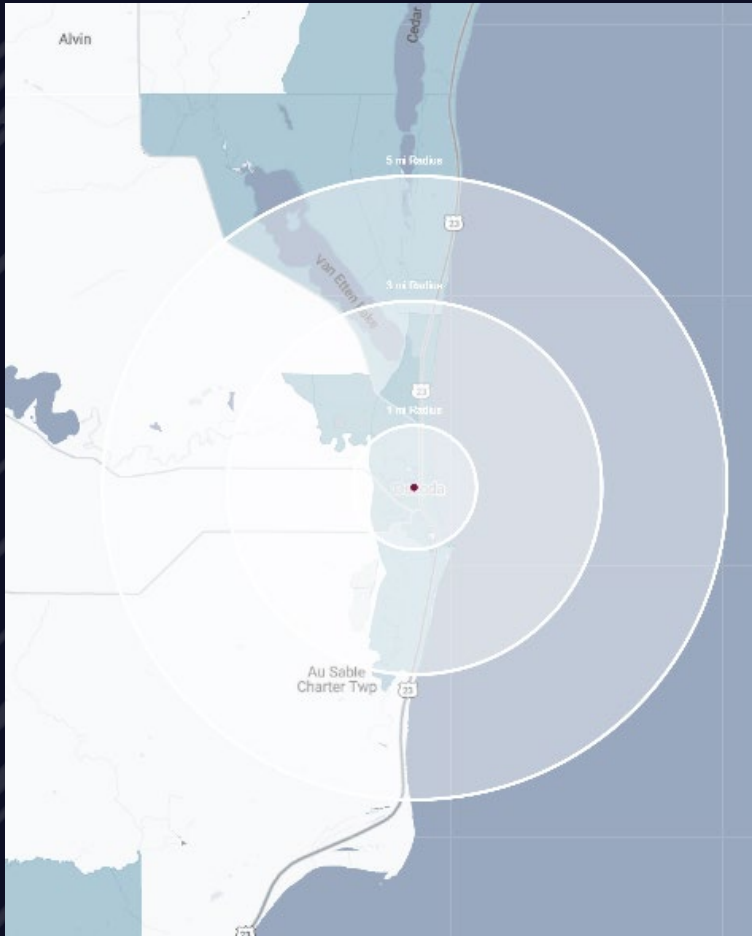
PLAT



PLANS



DEMOGRAPHICS



FORMER SCHOOL

110 N Pearl St,
Oscoda, MI 48750

DEMOGRAPHICS

POPULATION

	1 MILE	3 MILE	5 MILE
2023 Estimated Population	1,723	5,858	7,658
2028 Projected Population	1,680	5,981	7,902
2020 Census Population	1,771	5,666	7,379
2010 Census Population	1,732	5,691	7,439
Projected Annual Growth 2023 to 2028	-0.5%	0.4%	0.6%
Historical Annual Growth 2010 to 2023	-	0.2%	0.2%

HOUSEHOLDS

2023 Estimated Households	746	2,633	3,516
2028 Projected Households	722	2,661	3,594
2020 Census Households	792	2,609	3,434
2010 Census Households	772	2,605	3,435
Projected Annual Growth 2023 to 2028	-0.6%	0.2%	0.4%
Historical Annual Growth 2010 to 2023	-0.3%	-	0.2%

RACE

2023 Est. White	88.8%	90.9%	91.8%
2023 Est. Black	1.9%	1.8%	1.5%
2023 Est. Asian or Pacific Islander	2.2%	1.2%	1.0%
2023 Est. American Indian or Alaska Native	0.4%	0.5%	0.4%
2023 Est. Other Races	6.6%	5.7%	5.3%

INCOME

2023 Est. Average Household Income	\$67,292	\$60,940	\$61,981
2023 Est. Median Household Income	\$35,434	\$42,917	\$44,501
2023 Est. Per Capita Income	\$29,222	\$27,440	\$28,499

BUSINESS

2023 Est. Total Businesses	117	276	298
2023 Est. Total Employees	645	2,637	2,801

CONTACT US



**GORDON S.
HYDE**
Director

ghyde@landmarkcres.com
248 488 2620

LANDMARK
COMMERCIAL ▲ REAL ESTATE ▲ SERVICES

30500 Northwestern Hwy, Suite 200
Farmington Hills, MI 48334
248.488.2620
landmarkcres.com

LANDMARK COMMERCIAL REAL ESTATE SERVICES – Licensed Real Estate Brokers. The information above has been obtained from sources believed reliable. While we do not doubt its accuracy, we have not verified it and make no guarantee, warranty or representation about it. It is your responsibility to independently confirm its accuracy and completeness. Any projections, opinions, assumptions or estimates are used for example only and do not represent the current or future performance of the property. The value of this transaction to you depends on tax and other factors which should be evaluated by your tax, financial and legal advisors. You and your advisors should conduct a careful, independent investigation of the property to determine to your satisfaction, the suitability of the property for your needs.