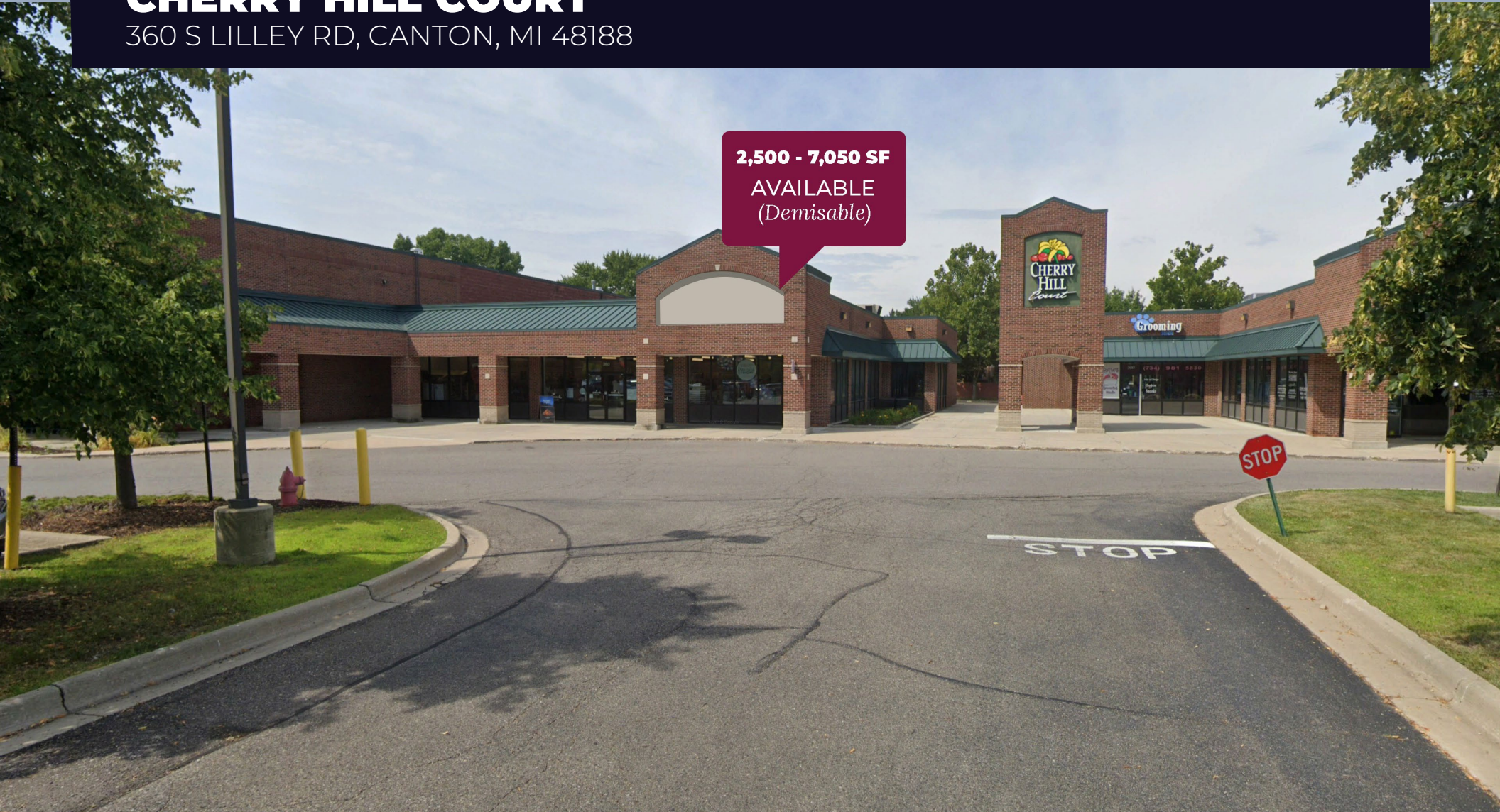


FOR LEASE

CHERRY HILL COURT

360 S LILLEY RD, CANTON, MI 48188

2,500 - 7,050 SF
AVAILABLE
(Demisable)



PROPERTY DETAILS

LOCATION: 360 S Lilley Rd, Canton, MI 48188

PROPERTY TYPE: Neighborhood Center

RENT: \$24.00/SF NNN

NNN: \$6.50/SF

AVAILABLE SPACE: 2,500 SF - 7,050 SF (Demisable)

LOT SIZE: 11.03 AC

TRAFFIC COUNT: Cherry Hill Court (12,574 CPD)
S Lilley St (15,053 CPD)

\$24.00/SF NNN

\$6.50/SF

RENT

NNN

TENANT ROSTER



HIGHLIGHTS

- Former Hallmark Store Space
- High Performing Grocery Anchor
- Excellent Demographics w/200K People in a 5-Mile Radius
- Space can be Demised

EXCLUSIVELY LISTED BY:



**GORDON S.
HYDE**

Director
ghyde@landmarkcres.com
248 488 2620

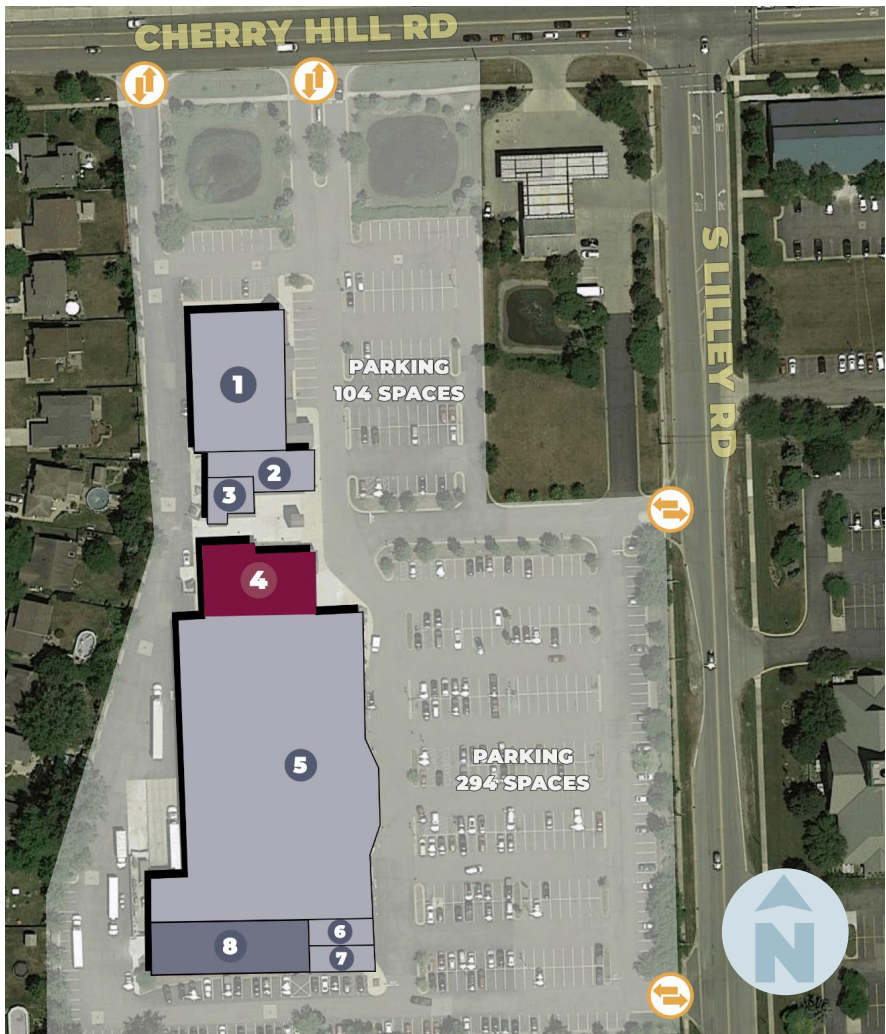
MICRO AERIAL



MACRO AERIAL



SITE PLAN

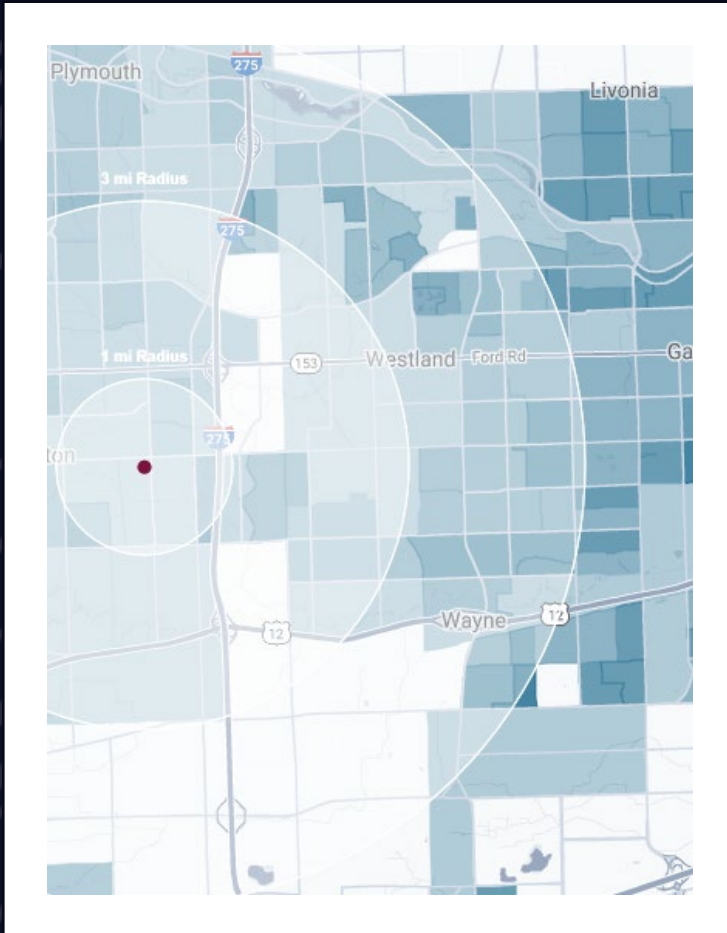


CHERRY HILL COURT

360 S Lilley Rd, Canton, MI 48188

#	TENANT	SF
1.	PROBILITY PHYSICAL THERAPY	10,000 SF
2.	GENERATIONS ORTHODONTICS	2,692 SF
3.	PAWS GROOMING	1,400 SF
4.	AVAILABLE	7,050 SF
5.	HOLIDAY MARKET	45,712 SF
6.	GREAT CLIPS	1,200 SF
7.	HOLIDAY NAILS	1,200 SF
8.	FUTURE EXPANSIONS	7,288 SF

DEMOGRAPHICS



CHERRY HILL COURT

360 S Lilley Rd, Canton, MI 48188

DEMOGRAPHICS

POPULATION	1 MILE	3 MILE	5 MILE
2023 Estimated Population	16,389	81,807	206,397
2028 Projected Population	16,236	82,545	211,295
2020 Census Population	17,039	84,193	209,238
2010 Census Population	16,212	80,842	197,317
Projected Annual Growth 2023 to 2028	-0.2%	0.2%	0.5%
Historical Annual Growth 2010 to 2023	-	-	0.4%
HOUSEHOLDS			
2023 Estimated Households	6,455	31,832	86,391
2028 Projected Households	6,539	32,633	90,016
2020 Census Households	6,497	31,739	84,506
2010 Census Households	6,076	30,050	78,156
Projected Annual Growth 2023 to 2028	0.3%	0.5%	0.8%
Historical Annual Growth 2010 to 2023	0.5%	0.5%	0.8%
RACE			
2023 Est. White	58.4%	61.6%	63.6%
2023 Est. Black	18.4%	18.7%	20.7%
2023 Est. Asian or Pacific Islander	16.6%	13.3%	9.4%
2023 Est. American Indian or Alaska Native	0.2%	0.2%	0.3%
2023 Est. Other Races	6.3%	6.1%	6.1%
INCOME			
2023 Est. Average Household Income	\$129,755	\$132,180	\$118,835
2023 Est. Median Household Income	\$91,093	\$99,766	\$91,970
2023 Est. Per Capita Income	\$51,139	\$51,500	\$49,823
BUSINESS			
2023 Est. Total Businesses	207	2,547	6,741
2023 Est. Total Employees	1,091	24,940	68,077

CONTACT US



**GORDON S.
HYDE**
Director

ghyde@landmarkcres.com
248 488 2620

LANDMARK
COMMERCIAL ▲ REAL ESTATE ▲ SERVICES

30500 Northwestern Hwy, Suite 200
Farmington Hills, MI 48334
248.488.2620
landmarkcres.com

LANDMARK COMMERCIAL REAL ESTATE SERVICES – Licensed Real Estate Brokers. The information above has been obtained from sources believed reliable. While we do not doubt its accuracy, we have not verified it and make no guarantee, warranty or representation about it. It is your responsibility to independently confirm its accuracy and completeness. Any projections, opinions, assumptions or estimates are used for example only and do not represent the current or future performance of the property. The value of this transaction to you depends on tax and other factors which should be evaluated by your tax, financial and legal advisors. You and your advisors should conduct a careful, independent investigation of the property to determine to your satisfaction, the suitability of the property for your needs.