

FOR LEASE

# NEW DEVELOPMENT STRIP CENTER

15750 HALL RD, CLINTON TWP, MI 48038



# PROPERTY DETAILS

**LOCATION:** 15750 Hall Rd,  
Clinton Twp, MI 48038

**PROPERTY TYPE:** Shopping Center

**RENT:** \$40.00/SF NNN

**NNN EXPENSE:** Absolute Net

**PROPERTY TAXES:** \$24,976.95

**BUILDING SIZE:** 8,200 SF

**AVAILABLE SPACE:** 1,642 SF

**DIMENSIONS:** 84' X 82'

**LOT SIZE:** 2.22 AC

**ZONING:** B-2

**TRAFFIC COUNT:** Hall Rd (81,972 CPD)  
Hayes Rd (36,714 CPD)

EXCLUSIVELY LISTED BY:



**LOUIS J. CIOTTI**  
Managing Director  
[lciotti@landmarkcres.com](mailto:lciotti@landmarkcres.com)  
248 488 2620

\$40.00/SF NNN

ABSOLUTE NET

**RENT**

**NNN**

## TENANT ROSTER



## DESCRIPTION

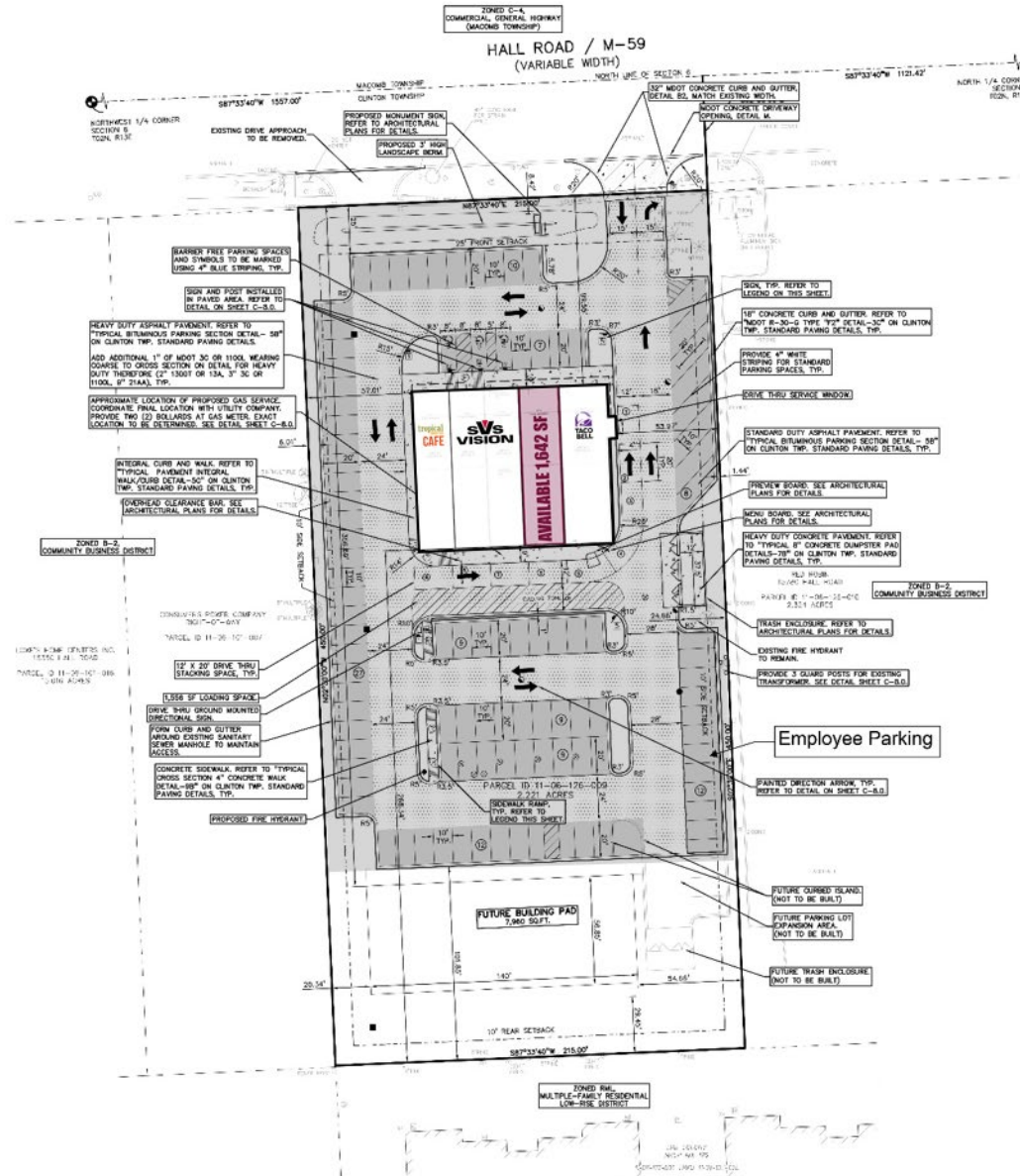
New Development Strip Center along Hall Road near Lakeside Mall in the heart of Michigan's premier retail corridor. National retailers include Target, Costco, Old Navy, and Kohl's. Surrounded by Lakeside Mall and Partridge Creek.

# MICRO AERIAL

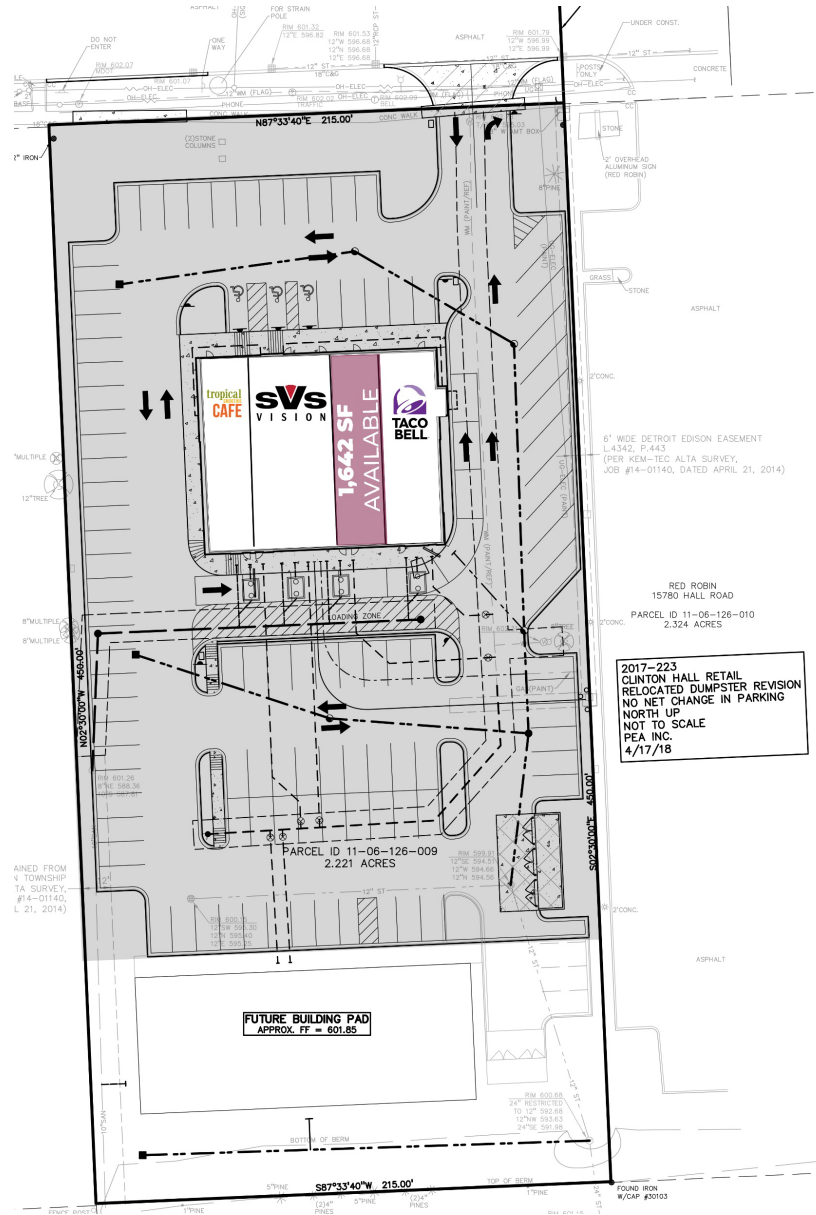




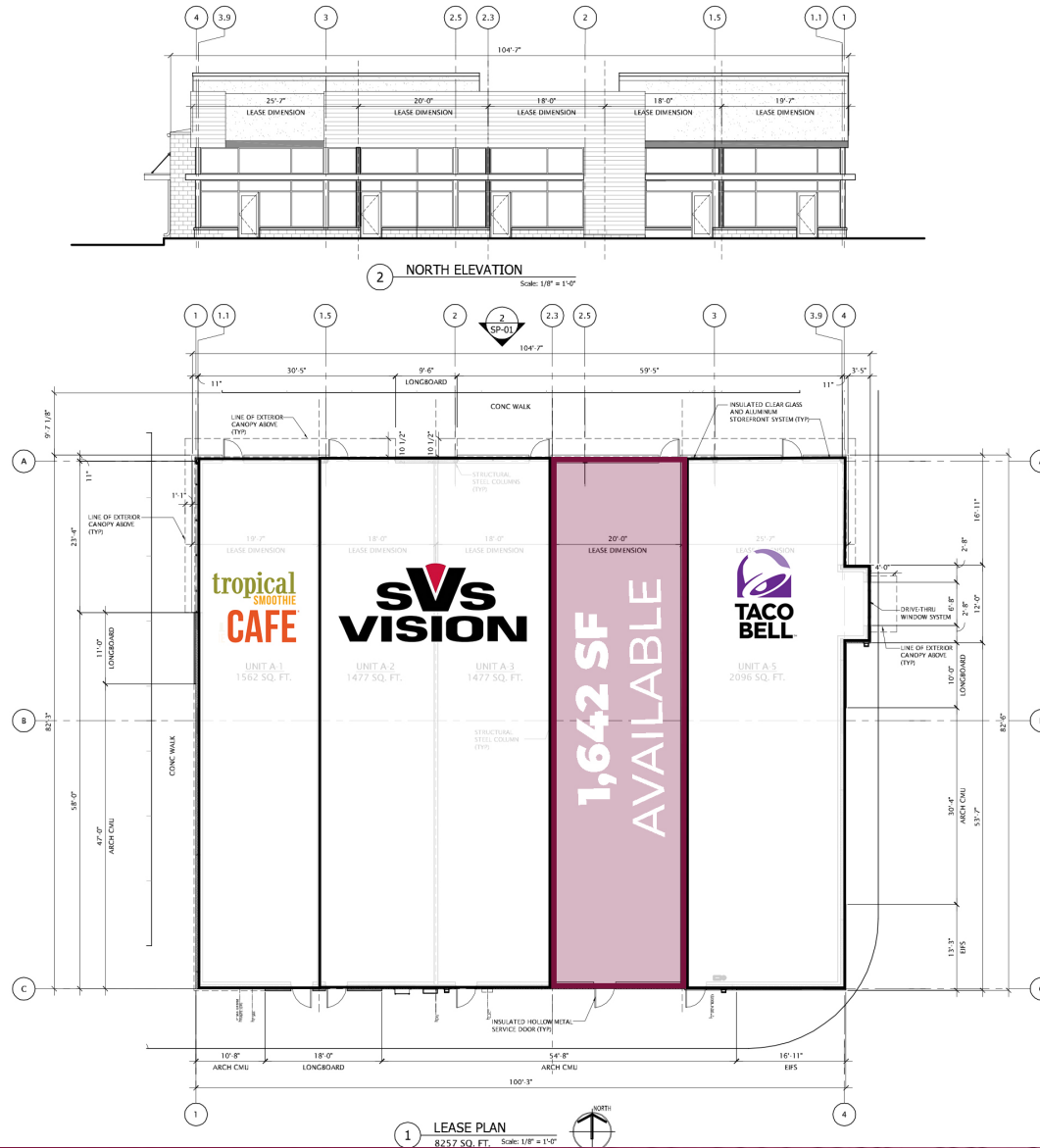
# SITE PLAN



# SITE PLAN



# LEASE PLAN

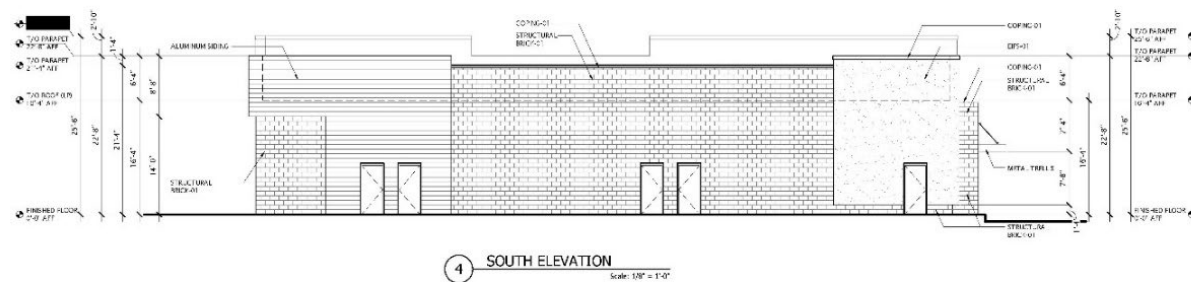
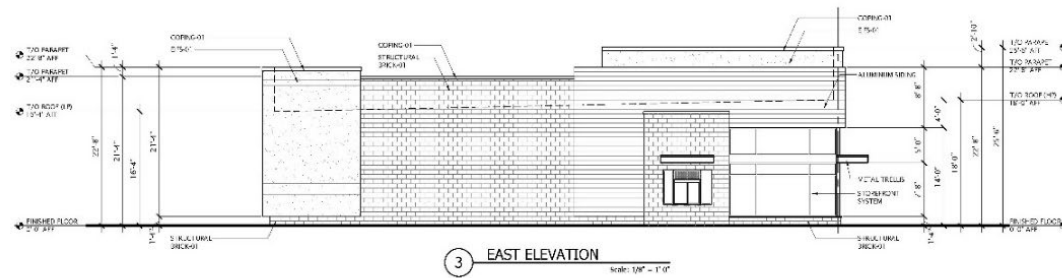
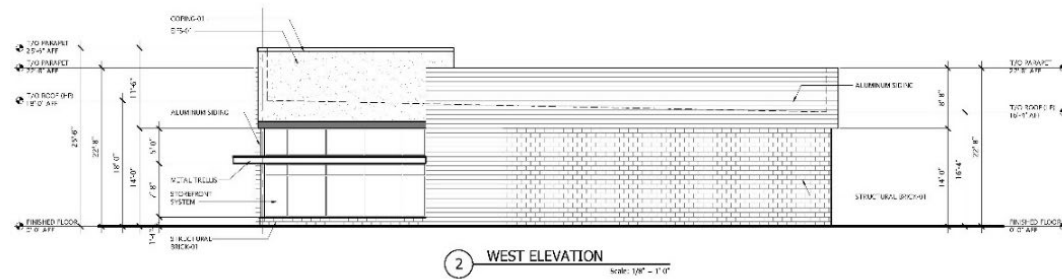
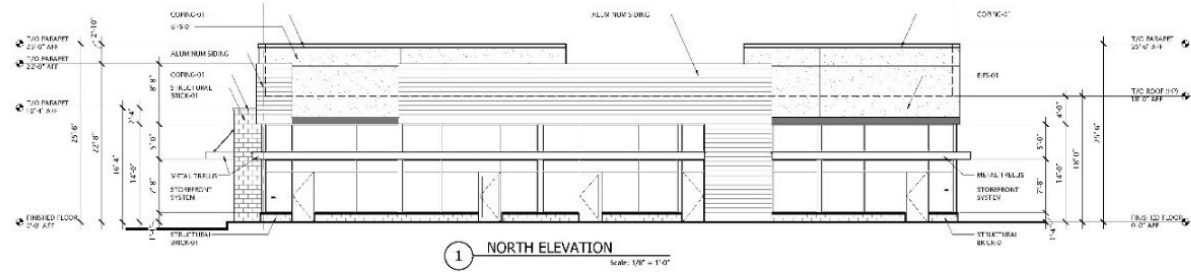


# ELEVATIONS

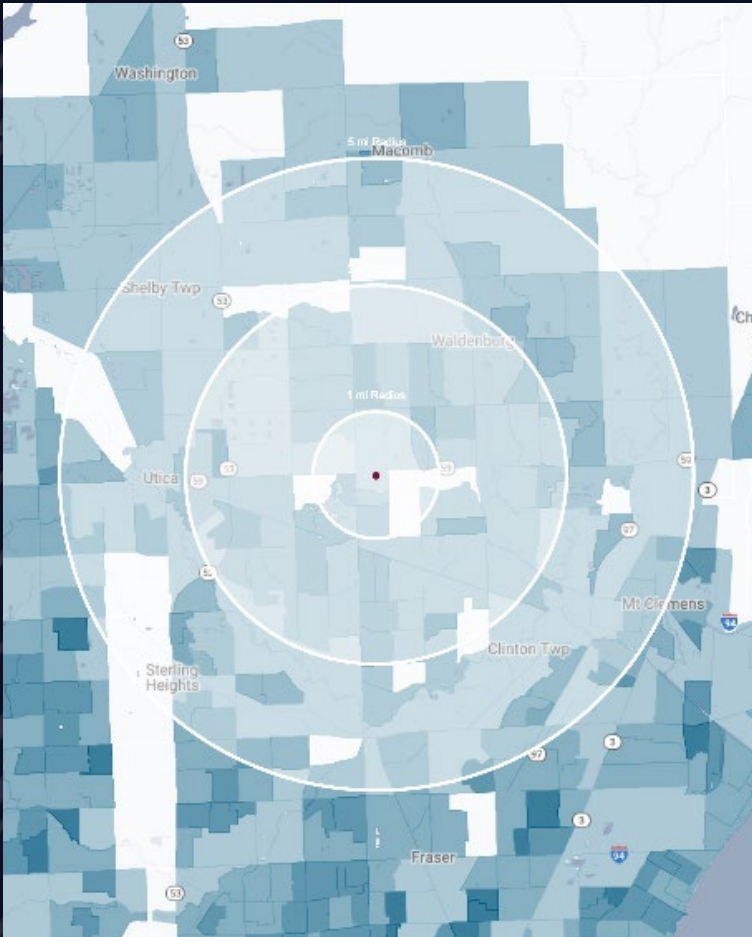




# ELEVATIONS



# DEMOGRAPHICS



## NEW DEVELOPMENT STRIP CENTER

15750 Hall Rd, Clinton Twp, MI 48038

# DEMOGRAPHICS

### POPULATION

	1 MILE	3 MILE	5 MILE
2023 Estimated Population	12,184	115,364	256,730
2028 Projected Population	12,107	115,034	262,381
2020 Census Population	12,306	117,258	257,196
2010 Census Population	12,651	110,673	242,899
Projected Annual Growth 2023 to 2028	-0.1%	-	0.4%
Historical Annual Growth 2010 to 2023	-0.3%	0.3%	0.4%

### HOUSEHOLDS

2023 Estimated Households	6,504	49,050	104,840
2028 Projected Households	6,418	48,657	106,280
2020 Census Households	6,385	48,736	102,985
2010 Census Households	6,447	45,130	95,138
Projected Annual Growth 2023 to 2028	-0.3%	-0.2%	0.3%
Historical Annual Growth 2010 to 2023	-	0.7%	0.8%

### RACE

2023 Est. White	75.6%	80.6%	79.8%
2023 Est. Black	14.4%	9.9%	10.6%
2023 Est. Asian or Pacific Islander	5.3%	5.0%	4.9%
2023 Est. American Indian or Alaska Native	0.2%	0.1%	0.1%
2023 Est. Other Races	4.7%	4.3%	4.6%

### INCOME

2023 Est. Average Household Income	\$88,035	\$113,812	\$114,184
2023 Est. Median Household Income	\$59,780	\$87,786	\$89,074
2023 Est. Per Capita Income	\$47,152	\$48,462	\$46,728

### BUSINESS

2023 Est. Total Businesses	554	3,550	8,567
2023 Est. Total Employees	9,278	38,388	94,510

## CONTACT US



**LOUIS J.  
CIOTTI**

*Managing Director*

[lciotti@landmarkcres.com](mailto:lciotti@landmarkcres.com)

248 488 2620

**LANDMARK**  
COMMERCIAL ▲ REAL ESTATE ▲ SERVICES

30500 Northwestern Hwy, Suite 200  
Farmington Hills, MI 48334  
248.488.2620  
[landmarkcres.com](http://landmarkcres.com)

LANDMARK COMMERCIAL REAL ESTATE SERVICES – Licensed Real Estate Brokers. The information above has been obtained from sources believed reliable. While we do not doubt its accuracy, we have not verified it and make no guarantee, warranty or representation about it. It is your responsibility to independently confirm its accuracy and completeness. Any projections, opinions, assumptions or estimates are used for example only and do not represent the current or future performance of the property. The value of this transaction to you depends on tax and other factors which should be evaluated by your tax, financial and legal advisors. You and your advisors should conduct a careful, independent investigation of the property to determine to your satisfaction, the suitability of the property for your needs.