

FOR SALE
VACANT LAND

US-23 (WHITMORE LAKE RD) & M-36 (9 MILE RD), GREEN OAK TWP, MI



PROPERTY DETAILS

LOCATION:	US-23 (Whitmore Lake Rd) & M-36 (9 Mile Rd), Green Oak Twp, MI
PROPERTY TYPE:	Vacant Land
SALES PRICE:	\$750,000.00
LOT SIZE:	7.64 AC
ZONING:	Light Industrial/ PUD for Hwy Commercial
TRAFFIC COUNT:	US-23 (Whitmore Lake Rd) (61,930 CPD) M-36 (9 Mile Rd) (7,224 CPD)

7.64 AC

\$750,000.00

LOT SIZE

SALES PRICE

EXCLUSIVELY LISTED BY:



JOHN KELLO
Managing Director
jkello@landmarkcres.com
248 488 2620

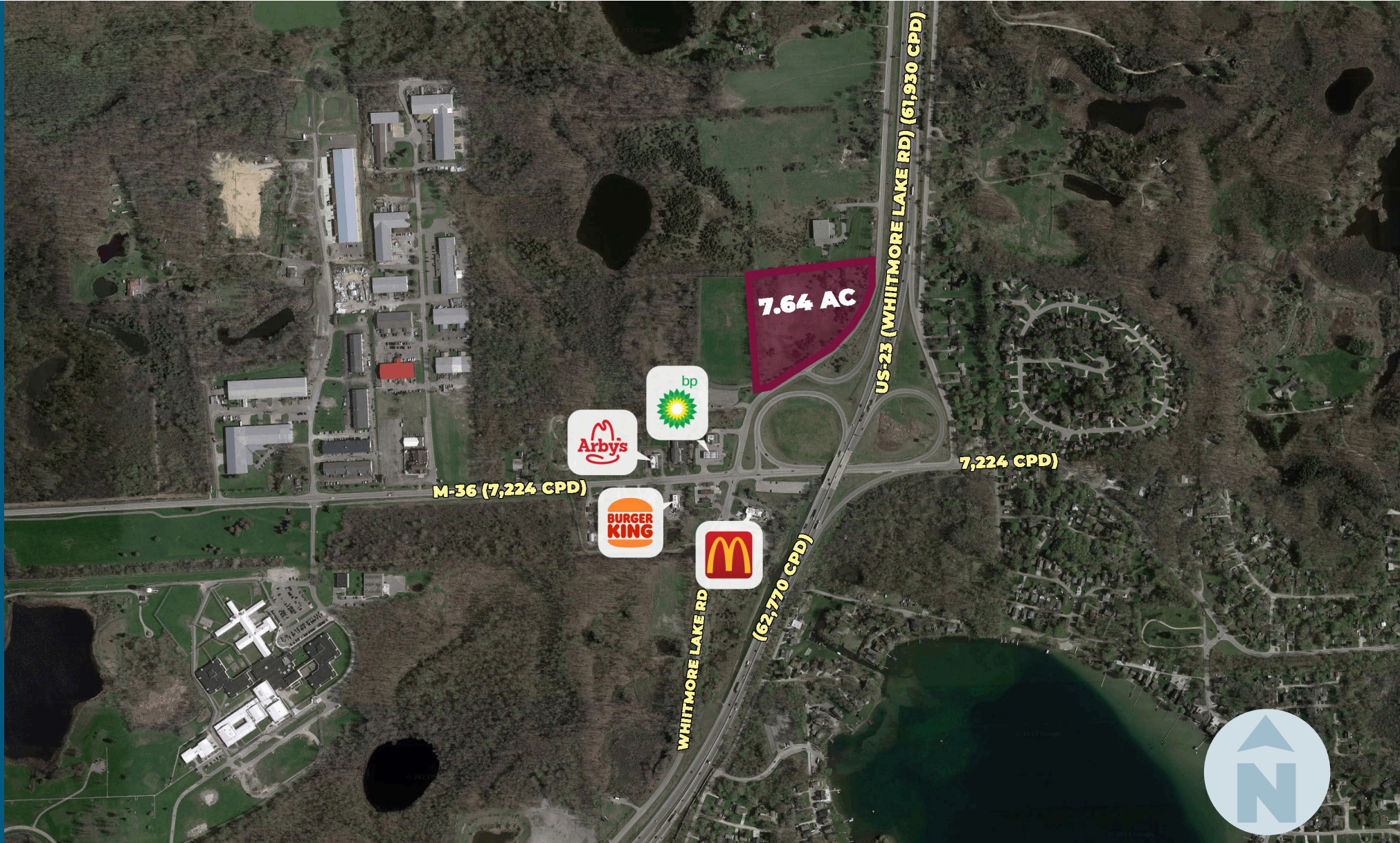


MICHAEL R. LIPPITT
Principal
mlippitt@landmarkcres.com
248 488 2620

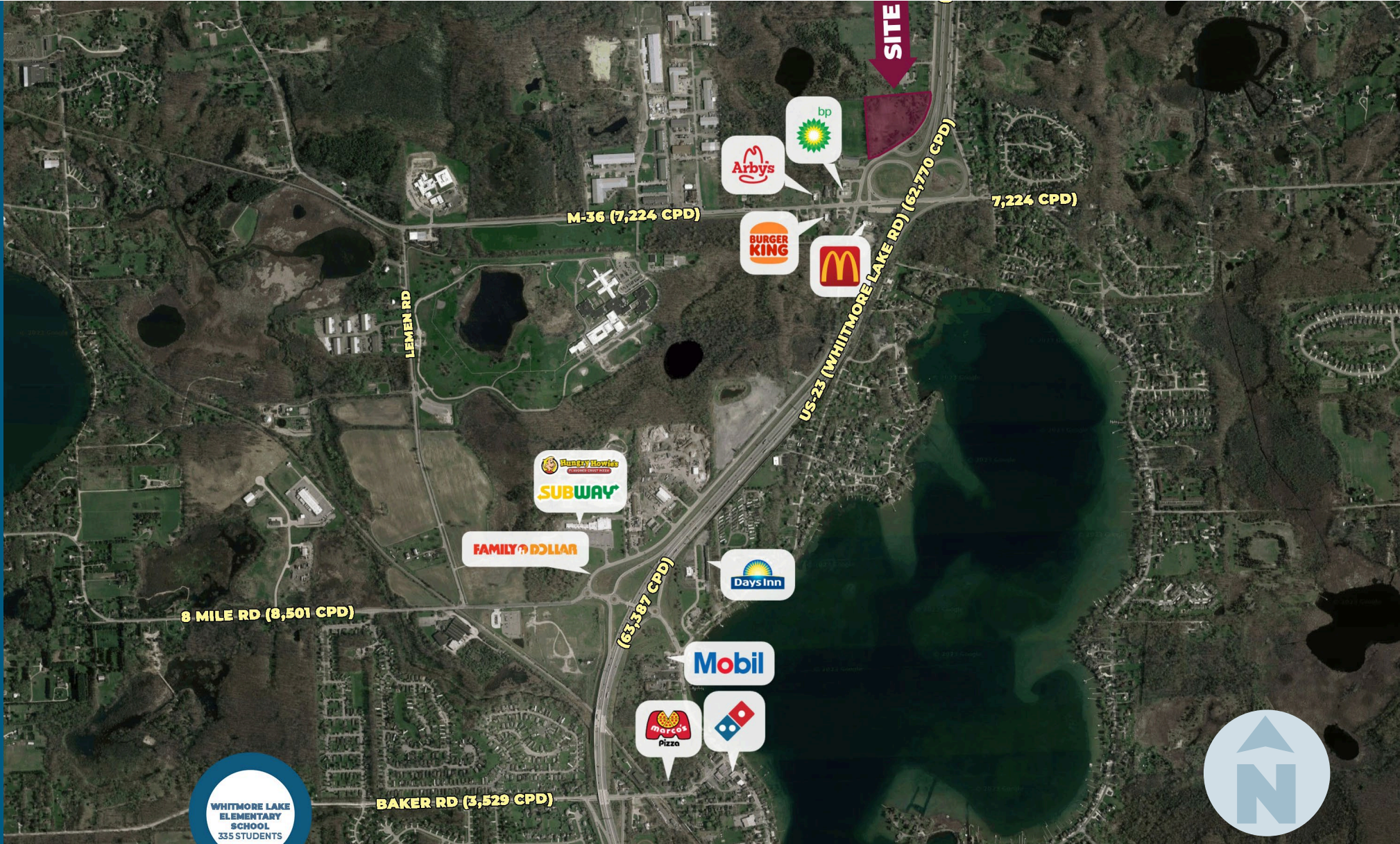
DESCRIPTION

This property is located at the northwest intersection of US-23 & M-36 between Ann Arbor and Brighton. M-36 is the major thoroughfare for eastern Livingston County communities such as Green Oak, Hamburg, and Pinckney. The site has approximately 1,000' of frontage on US-23 at the M-36 interchange.

MICRO AERIAL

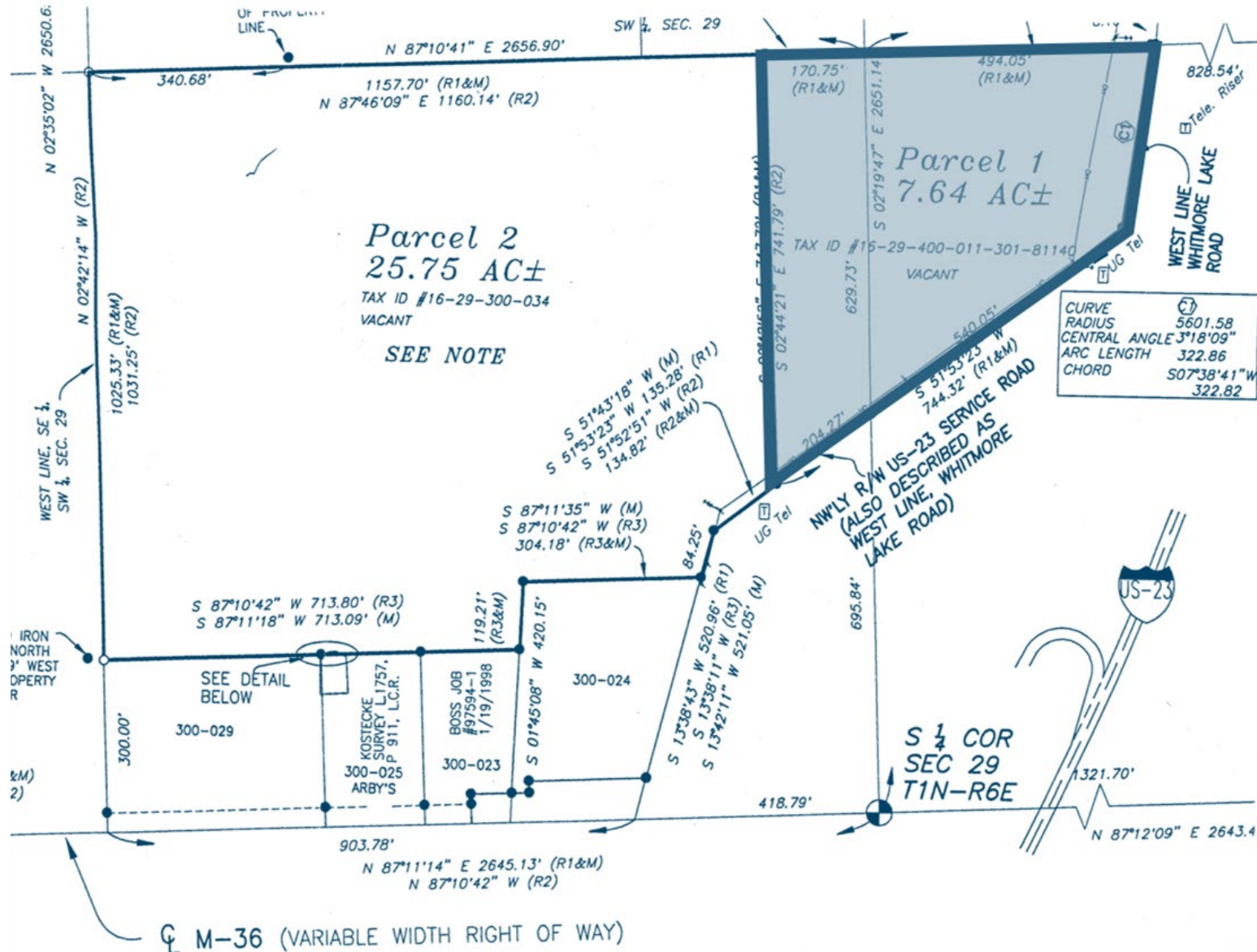


MACRO AERIAL

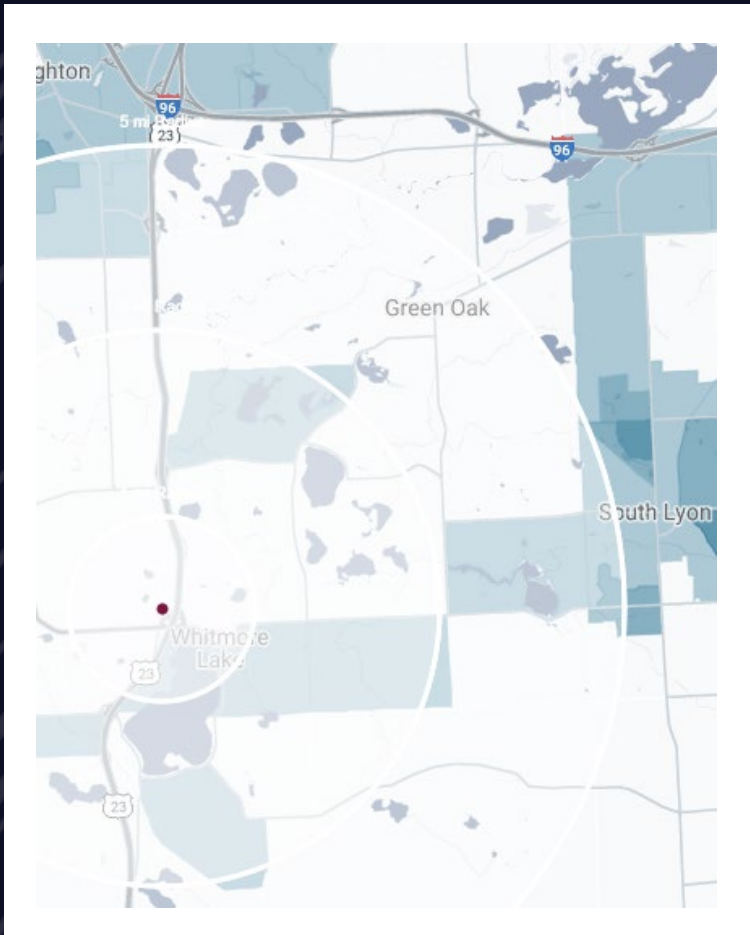


WHITMORE LAKE
ELEMENTARY
SCHOOL
335 STUDENTS

SURVEY



DEMOGRAPHICS



VACANT LAND

US-23 (Whitmore Lake Rd) & M-36 (9 Mile Rd), Green Oak, MI

DEMOGRAPHICS

POPULATION

	1 MILE	3 MILE	5 MILE
2023 Estimated Population	1,948	17,253	39,961
2028 Projected Population	1,948	17,504	40,847
2020 Census Population	1,822	17,126	39,520
2010 Census Population	1,381	15,142	36,924
Projected Annual Growth 2022 to 2028	-	0.3%	0.4%
Historical Annual Growth 2010 to 2023	3.2%	1.1%	0.6%

HOUSEHOLDS

2023 Estimated Households	653	7,009	15,669
2028 Projected Households	675	7,321	16,512
2020 Census Households	596	6,883	15,313
2010 Census Households	530	6,038	13,994
Projected Annual Growth 2022 to 2028	0.7%	0.9%	1.1%
Historical Annual Growth 2010 to 2023	1.8%	1.2%	0.9%

RACE

2023 Est. White	77.4%	91.5%	93.0%
2023 Est. Black	18.8%	3.3%	1.8%
2023 Est. Asian or Pacific Islander	0.9%	0.9%	1.1%
2023 Est. American Indian or Alaska Native	0.2%	0.2%	0.2%
2023 Est. Other Races	2.7%	4.0%	3.9%

INCOME

2023 Est. Average Household Income	\$169,451	\$133,073	\$144,495
2023 Est. Median Household Income	\$104,564	\$94,783	\$109,850
2023 Est. Per Capita Income	\$59,828	\$54,436	\$56,832

BUSINESS

2023 Est. Total Businesses	49	349	937
2023 Est. Total Employees	339	2,495	6,897

CONTACT US



**JOHN
KELLO**

Managing Director

jkello@landmarkcres.com

248 488 2620



**MICHAEL R.
LIPPITT**

Principal

mlippitt@landmarkcres.com

248 488 2620

LANDMARK
COMMERCIAL ▲ REAL ESTATE ▲ SERVICES

30500 Northwestern Hwy, Suite 200
Farmington Hills, MI 48334
248.488.2620
landmarkcres.com

LANDMARK COMMERCIAL REAL ESTATE SERVICES – Licensed Real Estate Brokers. The information above has been obtained from sources believed reliable. While we do not doubt its accuracy, we have not verified it and make no guarantee, warranty or representation about it. It is your responsibility to independently confirm its accuracy and completeness. Any projections, opinions, assumptions or estimates are used for example only and do not represent the current or future performance of the property. The value of this transaction to you depends on tax and other factors which should be evaluated by your tax, financial and legal advisors. You and your advisors should conduct a careful, independent investigation of the property to determine to your satisfaction, the suitability of the property for your needs.