

FOR SALE

0.64 ACRE PRIME COMMERCIAL OUTLOT

WATERS RD, EAST OF ANN ARBOR-SALINE RD, PITTSFIELD TWP, MI 48013



PROPERTY DETAILS

\$495,000.00

SALES PRICE

LOCATION: Waters Rd, East of Ann Arbor-Saline Rd, Pittsfield Twp, MI 48013

PROPERTY TYPE: Vacant Land

DATE AVAILABLE: Immediately

SALES PRICE: \$495,000.00

LOT SIZE: 0.64 AC

LOT DIMENSIONS: Frontage 126'
Depth 250'

ZONING: FB- Form Based Mix Use

TRAFFIC COUNT: Ann Arbor- Saline Rd (25,557 CPD)
I-94 (68,653 CPD)



DESCRIPTION

Rare commercial property available in the Briarwood Mall area in south Ann Arbor. Excellent location for bank, automotive, food or retail use. Adjacent retailers include, Meijer, Kohl's, Dick's Sporting Goods, Best Buy, Total Wine and a proposed La-Z-Boy Furniture store.

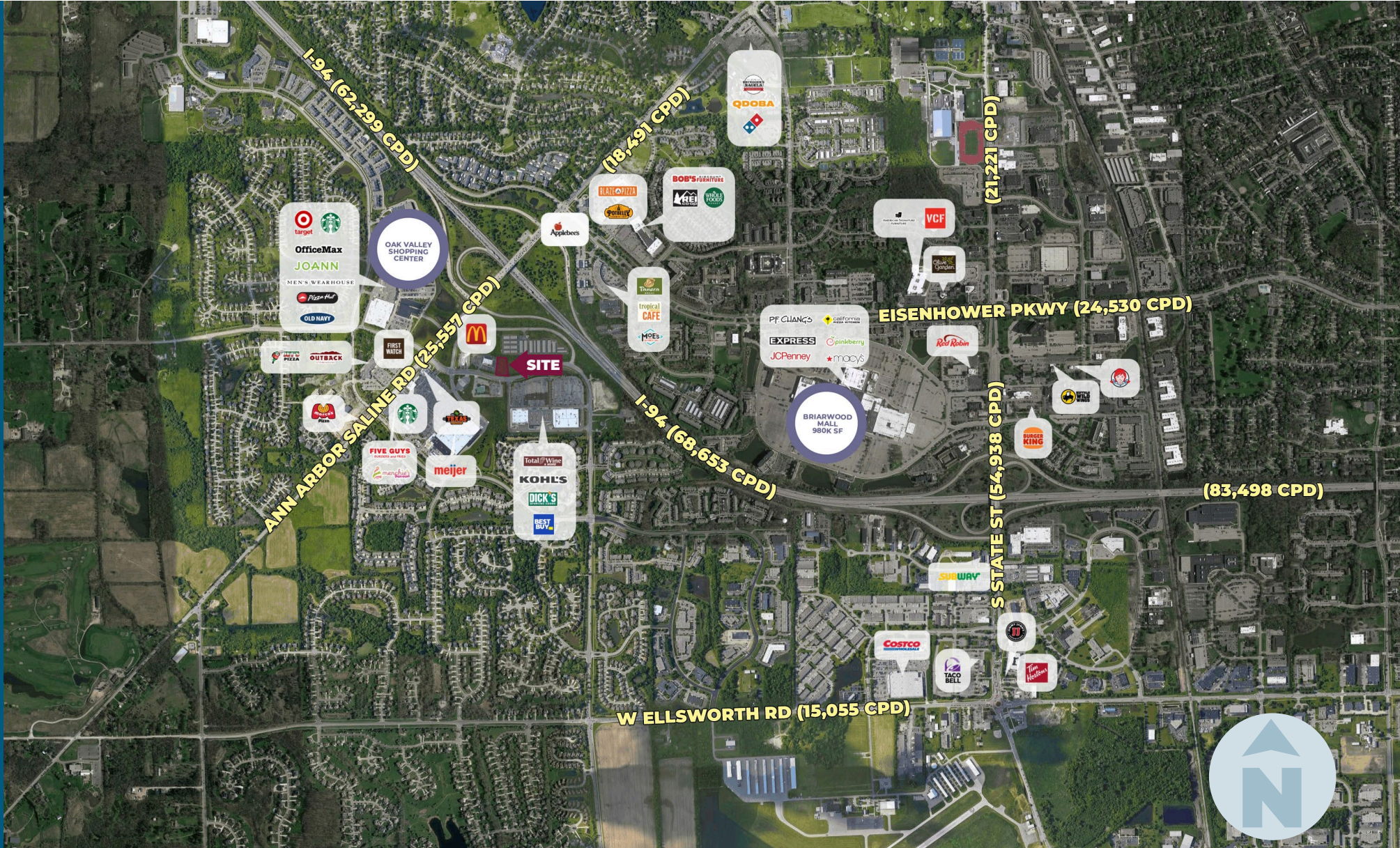
EXCLUSIVELY LISTED BY:



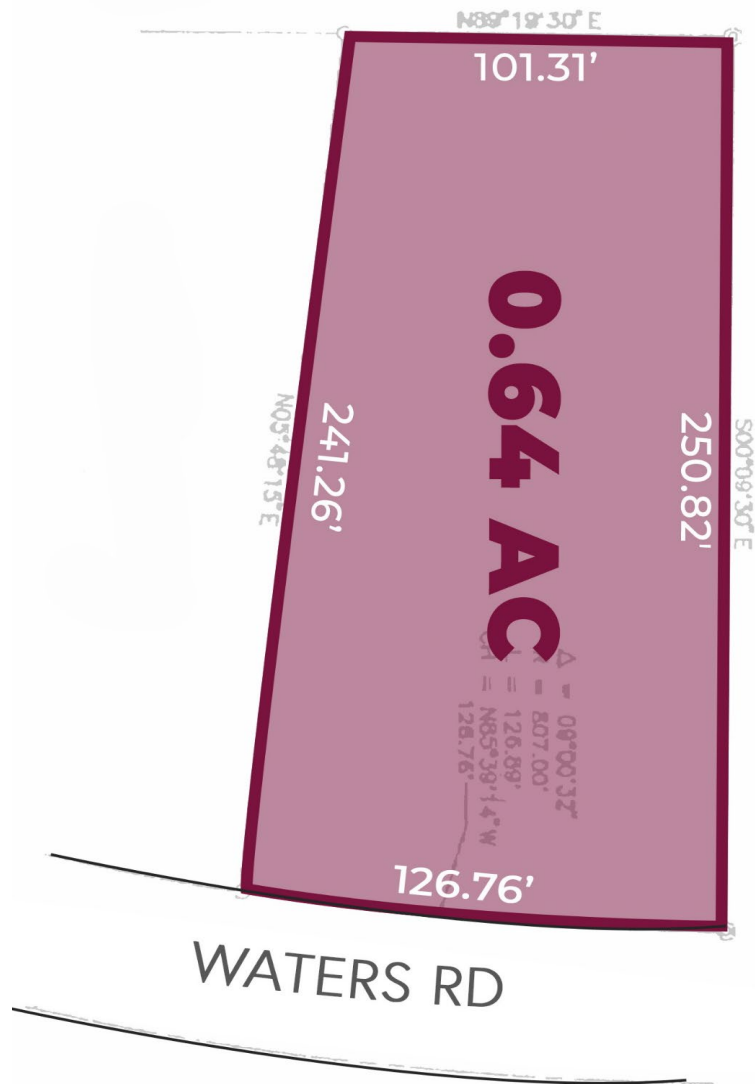
MATTHEW D. SWANTKO

Principal
mswantko@landmarkcres.com
248 488 2620

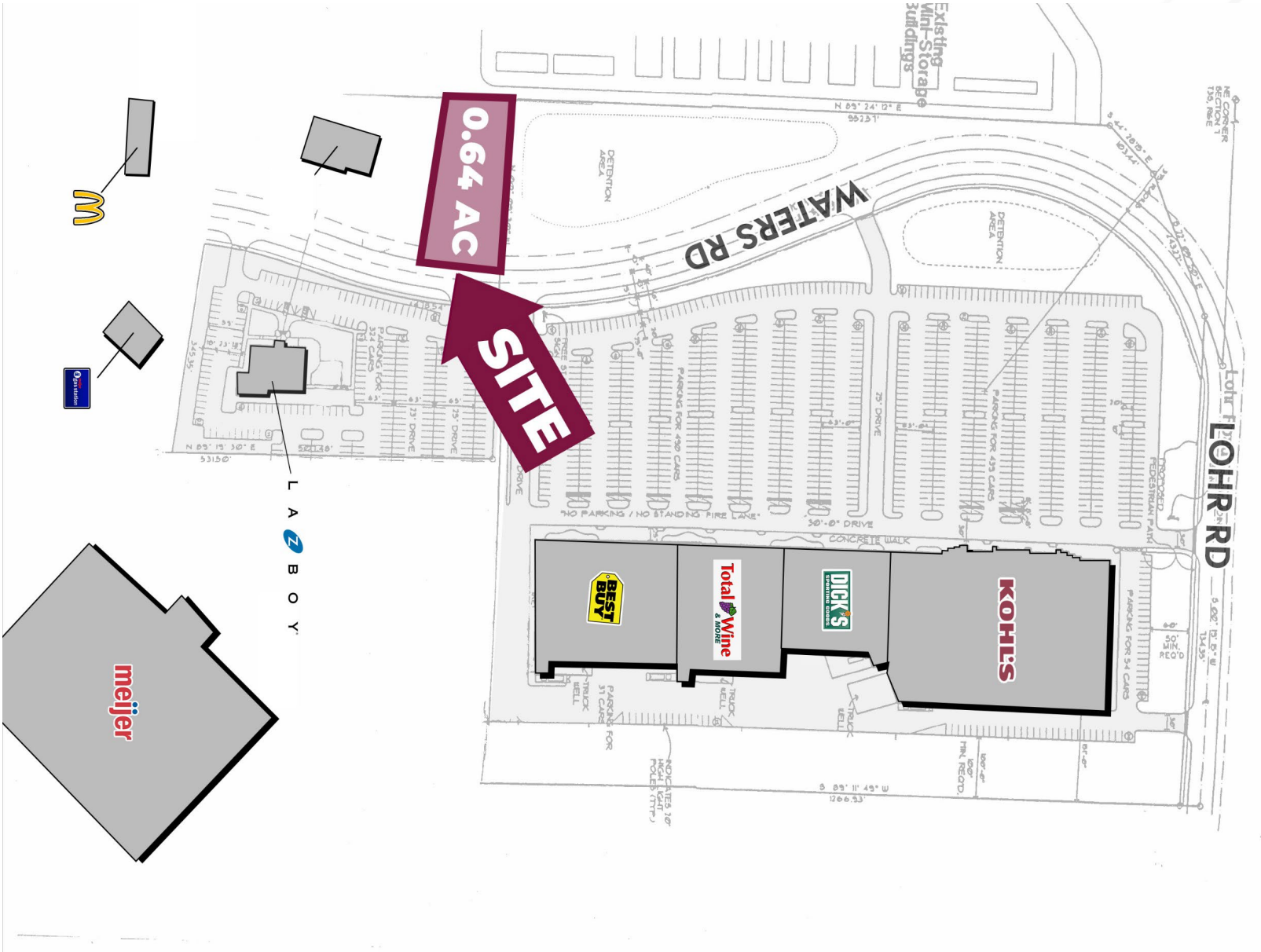
MACRO AERIAL



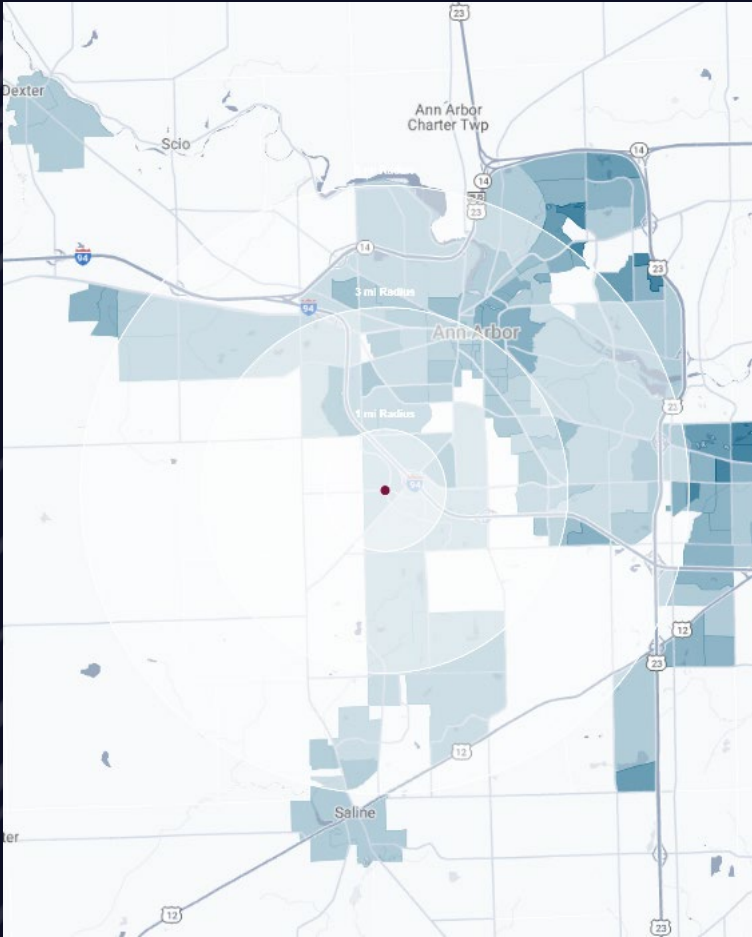
SITE PLAN



SURVEY



DEMOGRAPHICS



**0.64 ACRE PRIME
COMMERCIAL OUTLOT**
Waters Rd, East of Ann Arbor-Saline Rd,
Pittsfield Twp, MI

DEMOGRAPHICS

POPULATION

	1 MILE	3 MILE	5 MILE
2023 Estimated Population	7,866	71,161	145,934
2028 Projected Population	7,623	70,404	147,070
2020 Census Population	8,161	72,803	148,635
2010 Census Population	6,991	67,351	137,224
Projected Annual Growth 2023 to 2028	-0.6%	-0.2%	0.2%
Historical Annual Growth 2010 to 2023	1.0%	0.4%	0.5%

HOUSEHOLDS

2023 Estimated Households	3,310	29,980	58,824
2028 Projected Households	3,284	30,016	60,195
2020 Census Households	3,368	30,854	59,779
2010 Census Households	2,908	28,317	55,359
Projected Annual Growth 2023 to 2028	-0.2%	-	0.5%
Historical Annual Growth 2010 to 2023	1.1%	0.5%	0.5%

RACE

2023 Est. White	64.8%	67.1%	64.3%
2023 Est. Black	5.9%	6.8%	7.2%
2023 Est. Asian or Pacific Islander	22.9%	18.8%	21.6%
2023 Est. American Indian or Alaska Native	0.1%	0.2%	0.2%
2023 Est. Other Races	6.4%	7.1%	6.8%

INCOME

2023 Est. Average Household Income	\$188,460	\$141,743	\$146,819
2023 Est. Median Household Income	\$145,671	\$105,421	\$106,598
2023 Est. Per Capita Income	\$79,383	\$60,629	\$60,522

BUSINESS

2023 Est. Total Businesses	152	3,865	7,174
2023 Est. Total Employees	1,781	50,365	94,298

CONTACT US



**MATTHEW D.
SWANTKO**
Principal

mswantko@landmarkcres.com
248 488 2620

LANDMARK
COMMERCIAL ▲ REAL ESTATE ▲ SERVICES

30500 Northwestern Hwy, Suite 200
Farmington Hills, MI 48334
248.488.2620
landmarkcres.com

LANDMARK COMMERCIAL REAL ESTATE SERVICES – Licensed Real Estate Brokers. The information above has been obtained from sources believed reliable. While we do not doubt its accuracy, we have not verified it and make no guarantee, warranty or representation about it. It is your responsibility to independently confirm its accuracy and completeness. Any projections, opinions, assumptions or estimates are used for example only and do not represent the current or future performance of the property. The value of this transaction to you depends on tax and other factors which should be evaluated by your tax, financial and legal advisors. You and your advisors should conduct a careful, independent investigation of the property to determine to your satisfaction, the suitability of the property for your needs.