

FOR LEASE

DOLLAR GENERAL RETAIL CENTER

31012-31014 HARPER AVE, ST CLAIR SHORES, MI 48082



PROPERTY DETAILS

\$16.00/SF

\$4.25/SF

RENT

NNN

LOCATION: 31012-31014 Harper Ave,
St Clair Shores, MI 48082

PROPERTY TYPE: Shopping Center

DATE AVAILABLE: Immediately

RENT: \$16.00/SF

NNN EXPENSE: \$4.25/SF

BUILDING SIZE: 33,103 SF

AVAILABLE SPACE: 1,820 SF

TRAFFIC COUNT: 13 Mile Rd (19,279 CPD)
Harper Ave (22,740 CPD)

EXCLUSIVELY LISTED BY:



LOUIS J. CIOTTI
Managing Director
lcioti@landmarkcres.com
248 488 2620

HIGHLIGHTS

- Great visibility and accessibility located along the heavily traveled Harper Avenue
- Join notable retailers Dollar General & Subway

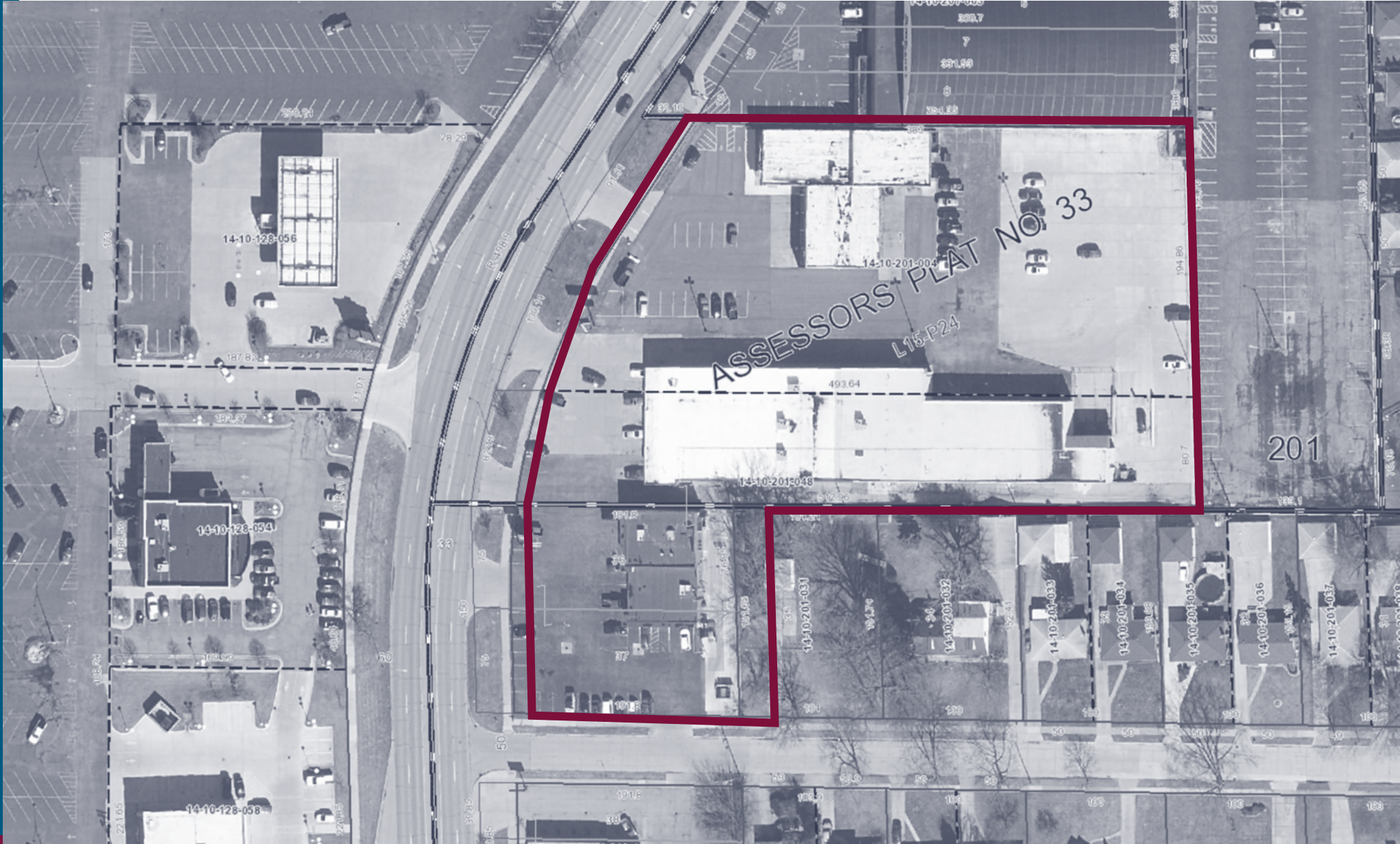
MICRO AERIAL



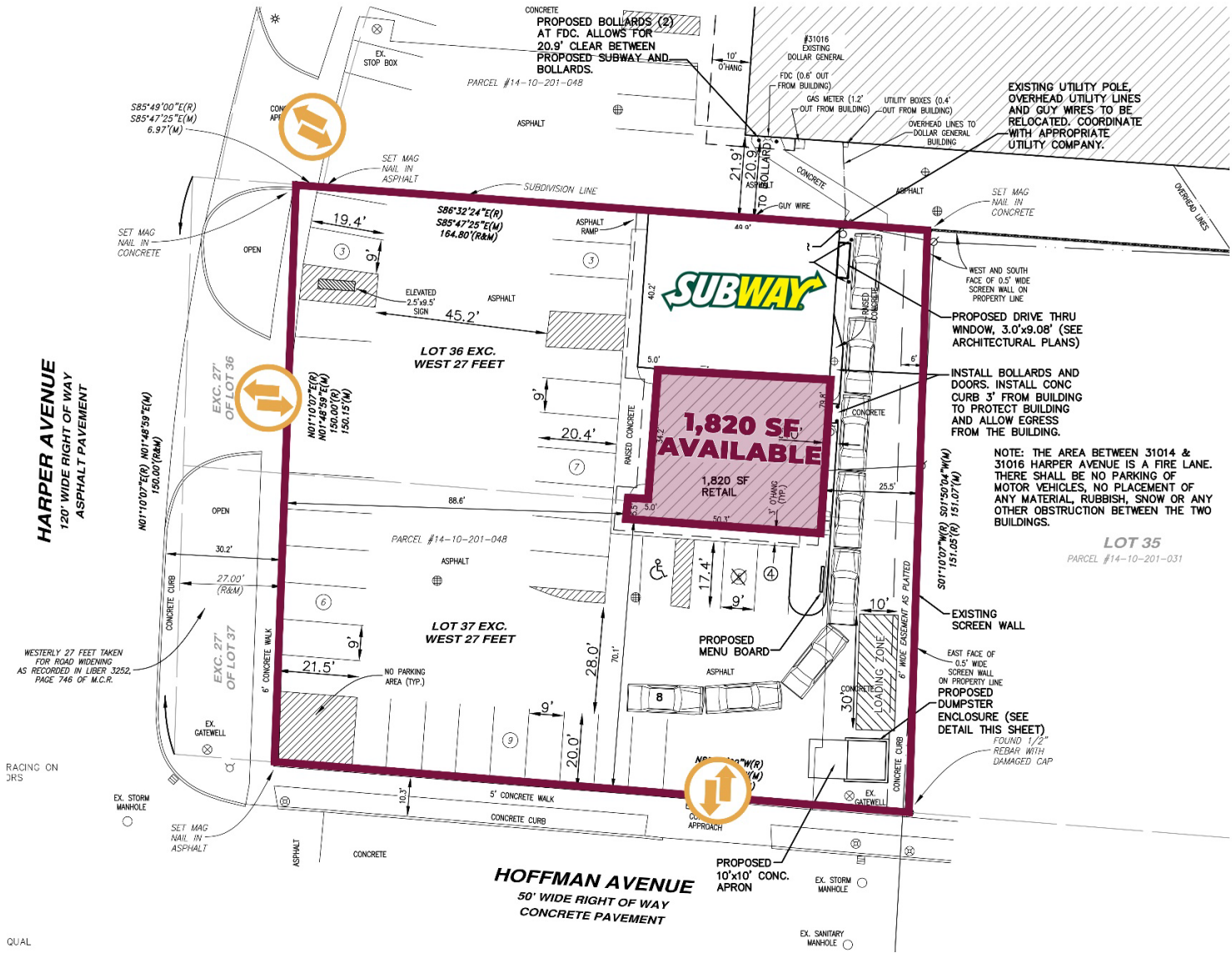
MACRO AERIAL



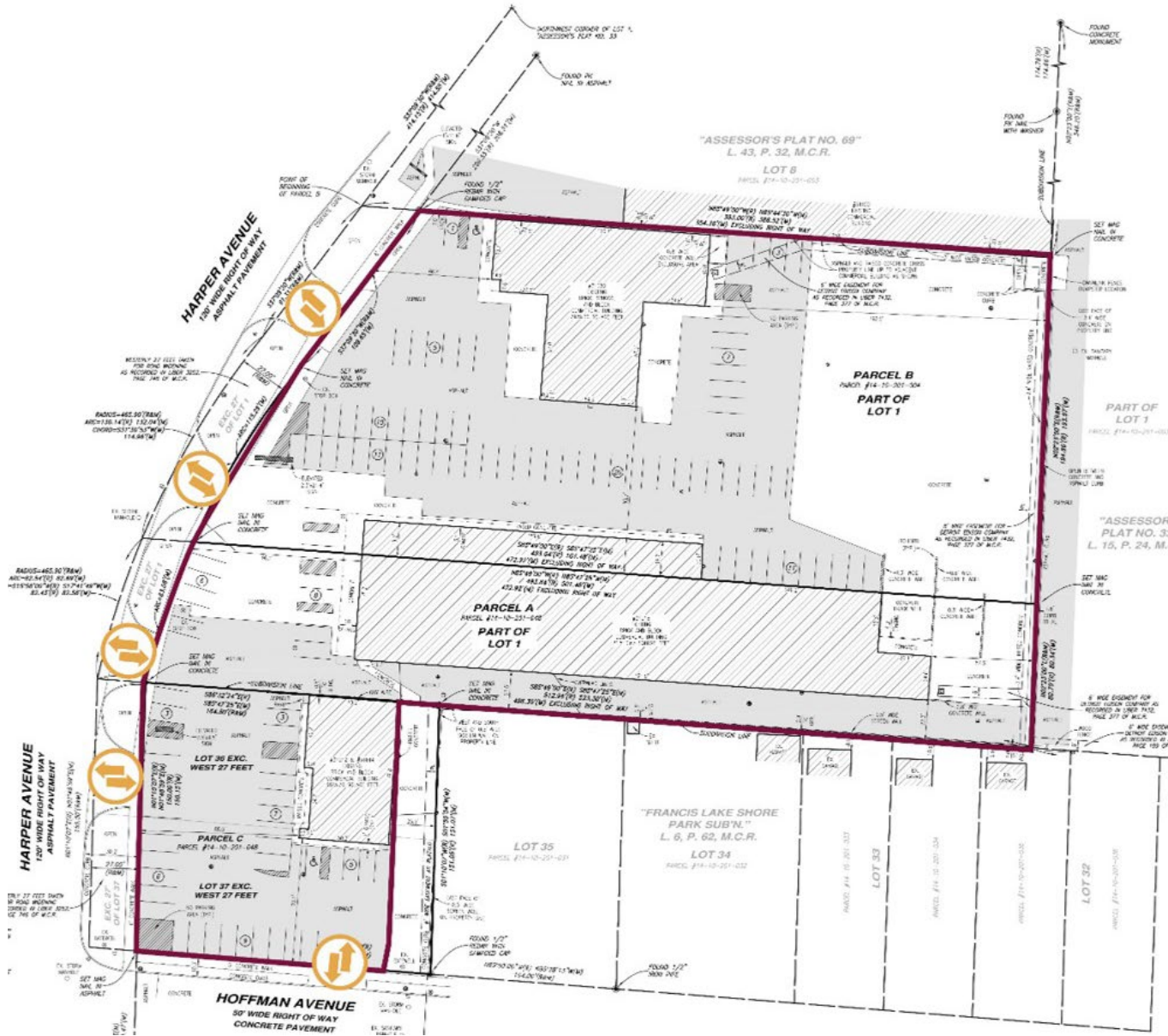
PLAT



SITE PLAN



SURVEY



SITE PHOTOS



SIGNAGE | HARPER AVE

DEMOGRAPHICS



DOLLAR GENERAL RETAIL CENTER

31012-31014 Harper Ave, St. Clair Shores, MI

DEMOGRAPHICS

POPULATION

	1 MILE	3 MILE	5 MILE
2023 Estimated Population	14,174	97,059	243,880
2028 Projected Population	14,274	96,712	243,542
2020 Census Population	14,165	97,642	245,187
2010 Census Population	14,300	98,149	243,462
Projected Annual Growth 2023 to 2028	0.1%	-	-
Historical Annual Growth 2010 to 2023	-	-	-

HOUSEHOLDS

2023 Estimated Households	6,506	42,385	106,756
2028 Projected Households	6,648	42,887	108,228
2020 Census Households	6,429	42,134	106,037
2010 Census Households	6,274	41,128	103,108
Projected Annual Growth 2023 to 2028	0.4%	0.2%	0.3%
Historical Annual Growth 2010 to 2023	0.3%	0.2%	0.3%

RACE

2023 Est. White	85.6%	77.5%	74.4%
2023 Est. Black	8.8%	15.3%	18.3%
2023 Est. Asian or Pacific Islander	1.1%	1.8%	2.4%
2023 Est. American Indian or Alaska Native	0.2%	0.2%	0.2%
2023 Est. Other Races	4.4%	5.1%	4.7%

INCOME

2023 Est. Average Household Income	\$96,312	\$92,148	\$89,887
2023 Est. Median Household Income	\$72,843	\$65,903	\$66,257
2023 Est. Per Capita Income	\$44,253	\$40,336	\$39,426

BUSINESS

2023 Est. Total Businesses	455	3,174	7,520
2023 Est. Total Employees	3,616	30,752	71,447

CONTACT US



**LOUIS J.
CIOTTI**

Managing Director

lciotti@landmarkcres.com

248 488 2620

LANDMARK
COMMERCIAL ▲ REAL ESTATE ▲ SERVICES

30500 Northwestern Hwy, Suite 200
Farmington Hills, MI 48334
248.488.2620
landmarkcres.com

LANDMARK COMMERCIAL REAL ESTATE SERVICES – Licensed Real Estate Brokers. The information above has been obtained from sources believed reliable. While we do not doubt its accuracy, we have not verified it and make no guarantee, warranty or representation about it. It is your responsibility to independently confirm its accuracy and completeness. Any projections, opinions, assumptions or estimates are used for example only and do not represent the current or future performance of the property. The value of this transaction to you depends on tax and other factors which should be evaluated by your tax, financial and legal advisors. You and your advisors should conduct a careful, independent investigation of the property to determine to your satisfaction, the suitability of the property for your needs.