

FOR LEASE
FORMER BANK BRANCH

19000 E. 9 MILE RD, EASTPOINTE, MI



PROPERTY DETAILS

\$25.00/PSF

RENT

LOCATION:	19000 E. 9 Mile Rd, Eastpoint, MI
PROPERTY TYPE:	Freestanding Building
DATE AVAILABLE:	Immediately
RENT:	\$25.00/PSF
PROPERTY TAXES:	\$21,930
BUILDING SIZE:	4,386 SF
LOT SIZE:	0.56 AC
ZONING:	B-3 Retail
TRAFFIC COUNT:	9 Mile Rd (23,256 CPD) I-94 (134,517 CPD)

DESCRIPTION

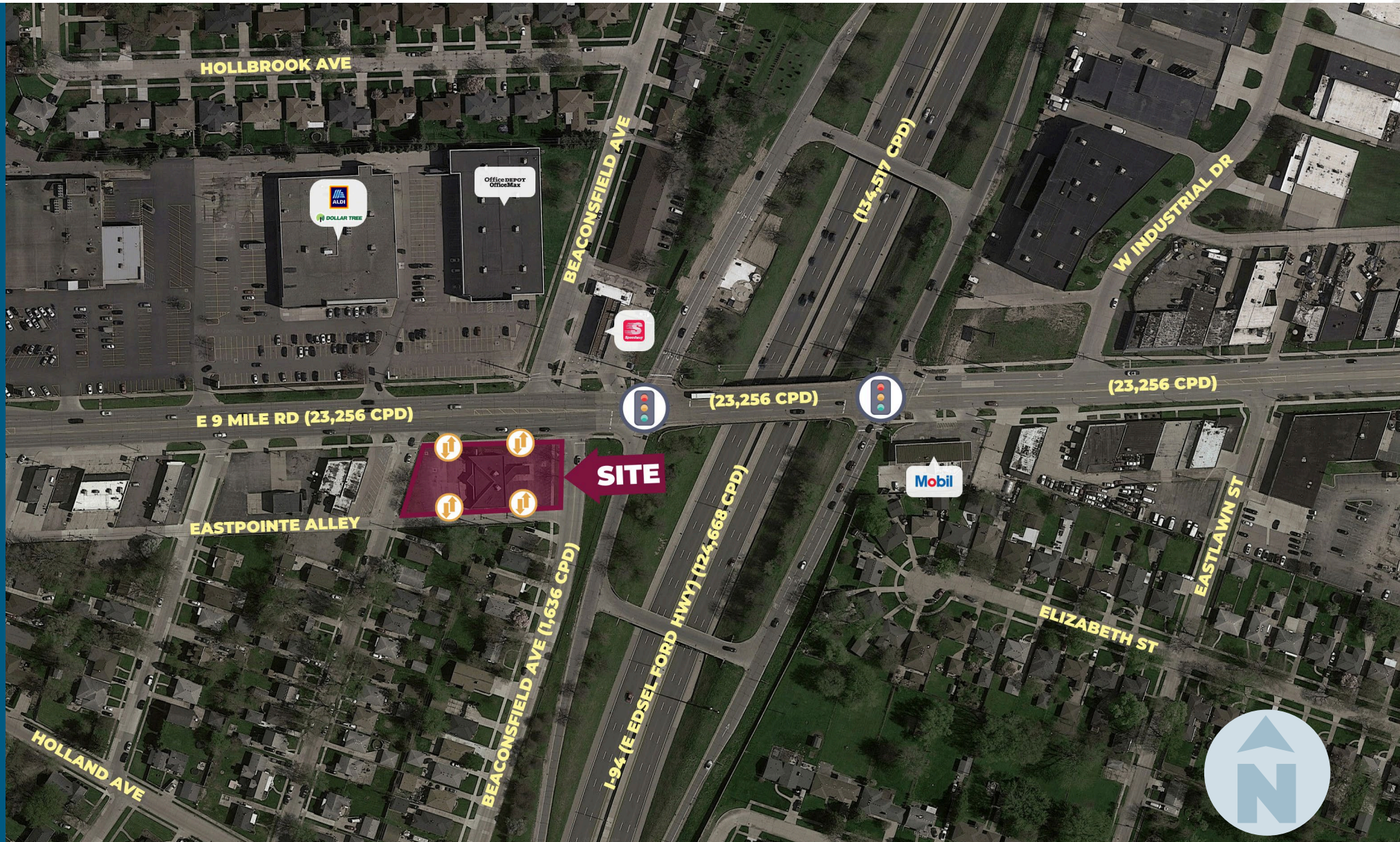
- Freestanding Former Bank Branch
- Drive-Thru
- Tremendous Visibility
- Freeway Access

EXCLUSIVELY LISTED BY:

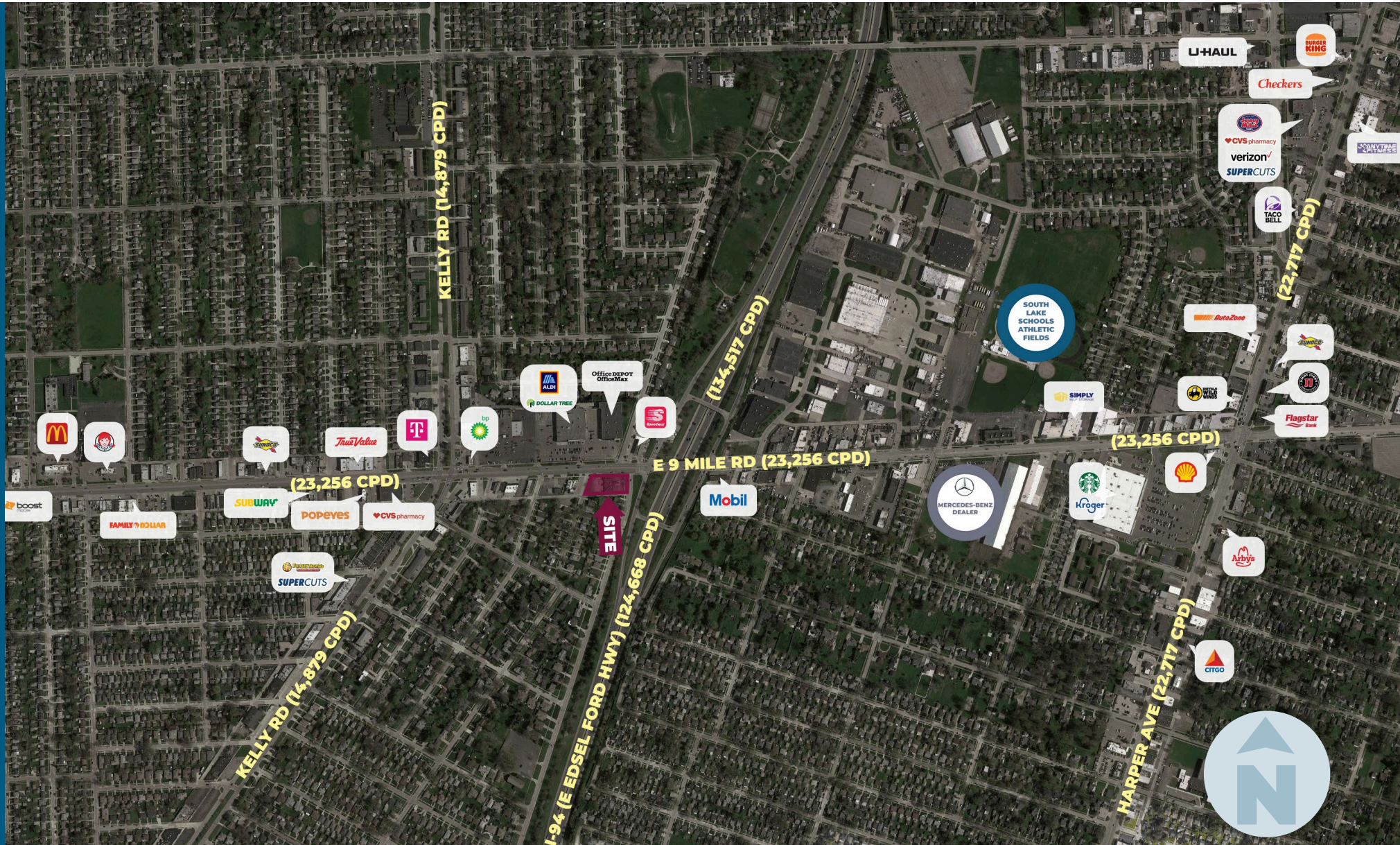


**LOUIS J.
CIOTTI**
Managing Director
lcotti@landmarkcres.com
248 488 2620

MICRO AERIAL



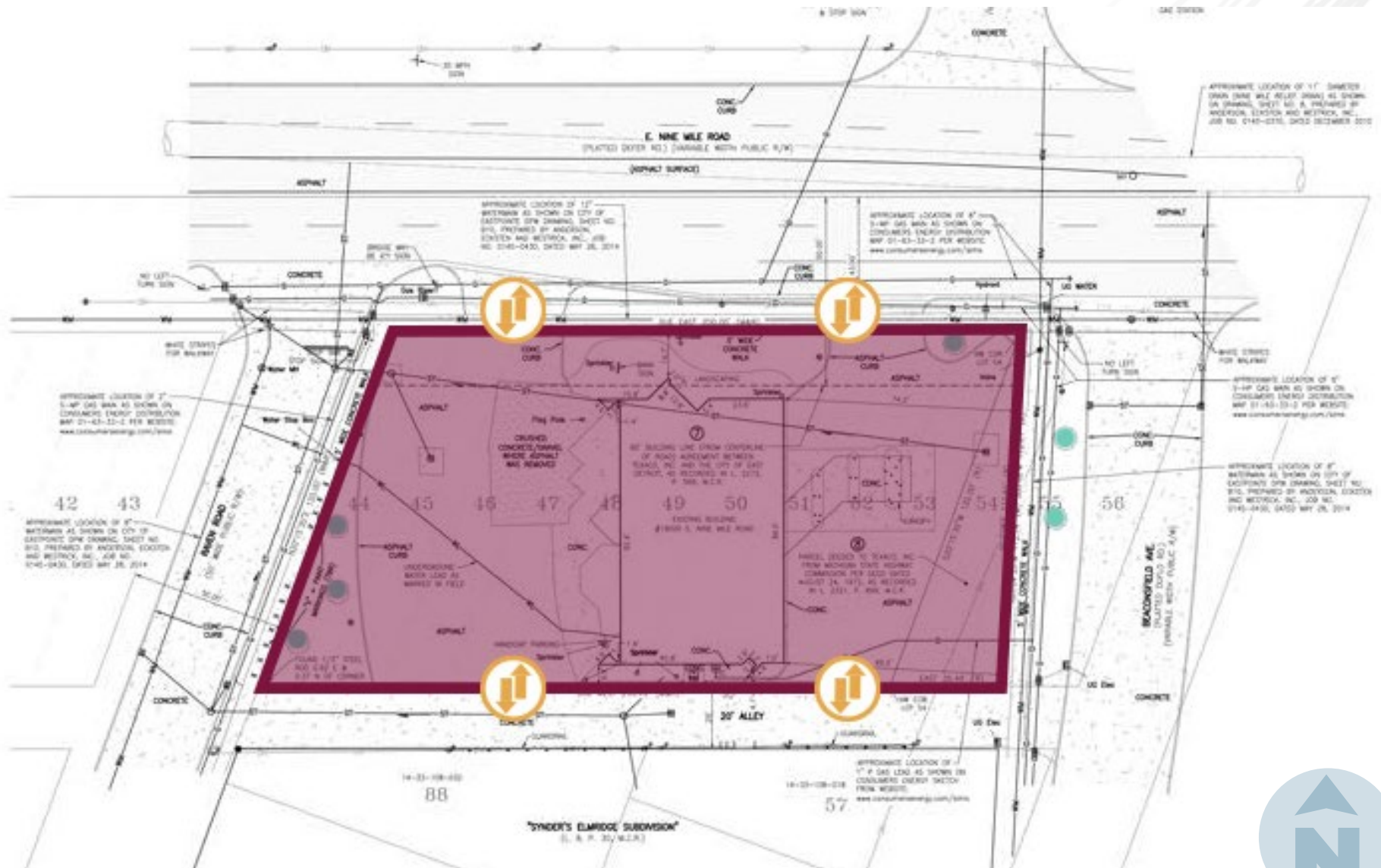
MACRO AERIAL



PLAT



SURVEY



SITE PHOTOS



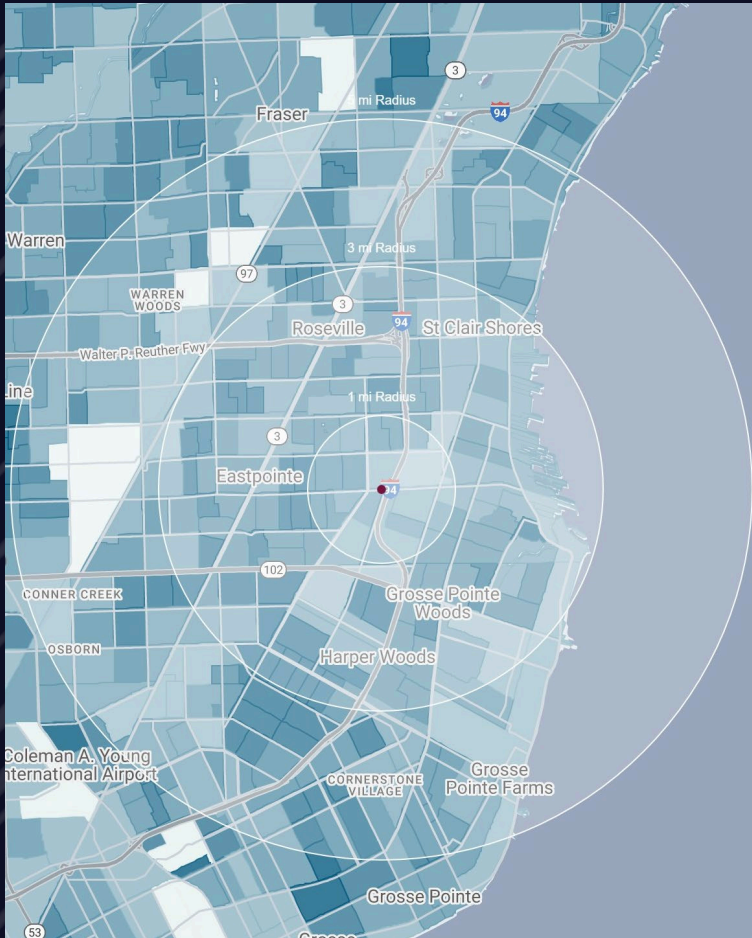
SITE PHOTOS



SITE PHOTOS



DEMOGRAPHICS



FORMER BANK BRANCH

19000 E. 9 Mile Rd,
Eastpointe, MI

DEMOGRAPHICS

POPULATION

	1 MILE	3 MILE	5 MILE
2022 Estimated Population	18,044	153,512	313,116
2027 Projected Population	17,696	150,192	306,975
2020 Census Population	18,192	154,568	313,774
2010 Census Population	17,676	153,961	323,834
Projected Annual Growth 2022 to 2027	-0.4%	-0.4%	-0.4%
Historical Annual Growth 2010 to 2022	0.2%	-	-0.3%

HOUSEHOLDS

2022 Estimated Households	7,436	62,388	124,352
2027 Projected Households	7,460	62,136	123,982
2020 Census Households	7,494	62,852	124,698
2010 Census Households	7,230	61,746	125,984
Projected Annual Growth 2022 to 2027	-	-	-
Historical Annual Growth 2010 to 2022	0.2%	-	-0.1%

RACE

2022 Est. White	56.2%	57.5%	53.4%
2022 Est. Black	35.5%	33.9%	38.0%
2022 Est. Asian or Pacific Islander	1.4%	1.8%	2.2%
2022 Est. American Indian or Alaska Native	0.2%	0.2%	0.3%
2022 Est. Other Races	6.6%	6.5%	6.2%

INCOME

2022 Est. Average Household Income	\$69,341	\$72,683	\$74,222
2022 Est. Median Household Income	\$61,685	\$61,818	\$60,096
2022 Est. Per Capita Income	\$28,589	\$29,586	\$29,548

BUSINESS

2022 Est. Total Businesses	655	4,667	9,733
2022 Est. Total Employees	5,212	34,824	98,602

CONTACT US



**LOUIS J.
CIOTTI**

Managing Director

lciotti@landmarkcres.com

248 488 2620

LANDMARK
COMMERCIAL ▲ REAL ESTATE ▲ SERVICES

30500 Northwestern Hwy, Suite 200
Farmington Hills, MI 48334
248.488.2620
landmarkcres.com

LANDMARK COMMERCIAL REAL ESTATE SERVICES – Licensed Real Estate Brokers. The information above has been obtained from sources believed reliable. While we do not doubt its accuracy, we have not verified it and make no guarantee, warranty or representation about it. It is your responsibility to independently confirm its accuracy and completeness. Any projections, opinions, assumptions or estimates are used for example only and do not represent the current or future performance of the property. The value of this transaction to you depends on tax and other factors which should be evaluated by your tax, financial and legal advisors. You and your advisors should conduct a careful, independent investigation of the property to determine to your satisfaction, the suitability of the property for your needs.