

FOR LEASE

RESTAURANT SPACE

1695 E. BIG BEAVER RD, TROY, MI 48083



PROPERTY DETAILS

LOCATION:	San Marino Restaurant Space (Rear Facility)
	1695 E. Big Beaver Rd, Troy, MI 48083
PROPERTY TYPE:	Restaurant
DATE AVAILABLE:	Immediately
RENT:	Contact Broker
BUILDING SIZE:	17,000 SF
LOT SIZE:	Total: 11.08 AC Restaurant Space: 2 AC
AVAILABLE SPACE:	6,000 – 8,000 SF & Partial Outdoor Patio
ZONING:	Retail
TRAFFIC COUNT:	E. Big Beaver (37,232 CPD) John R Rd (22,869 CPD)

EXCLUSIVELY LISTED BY:



**LOUIS J.
CIOTTI**
Managing Director
lcotti@landmarkres.com
248 488 2620

HIGHLIGHTS

- San Marino Restaurant Space (Rear Facility)
- Freestanding Building
- Turn-Key Restaurant Facility
- Well Furnished
- Ample Parking
- Private Banquet Facility Available
- Walk-In Ready

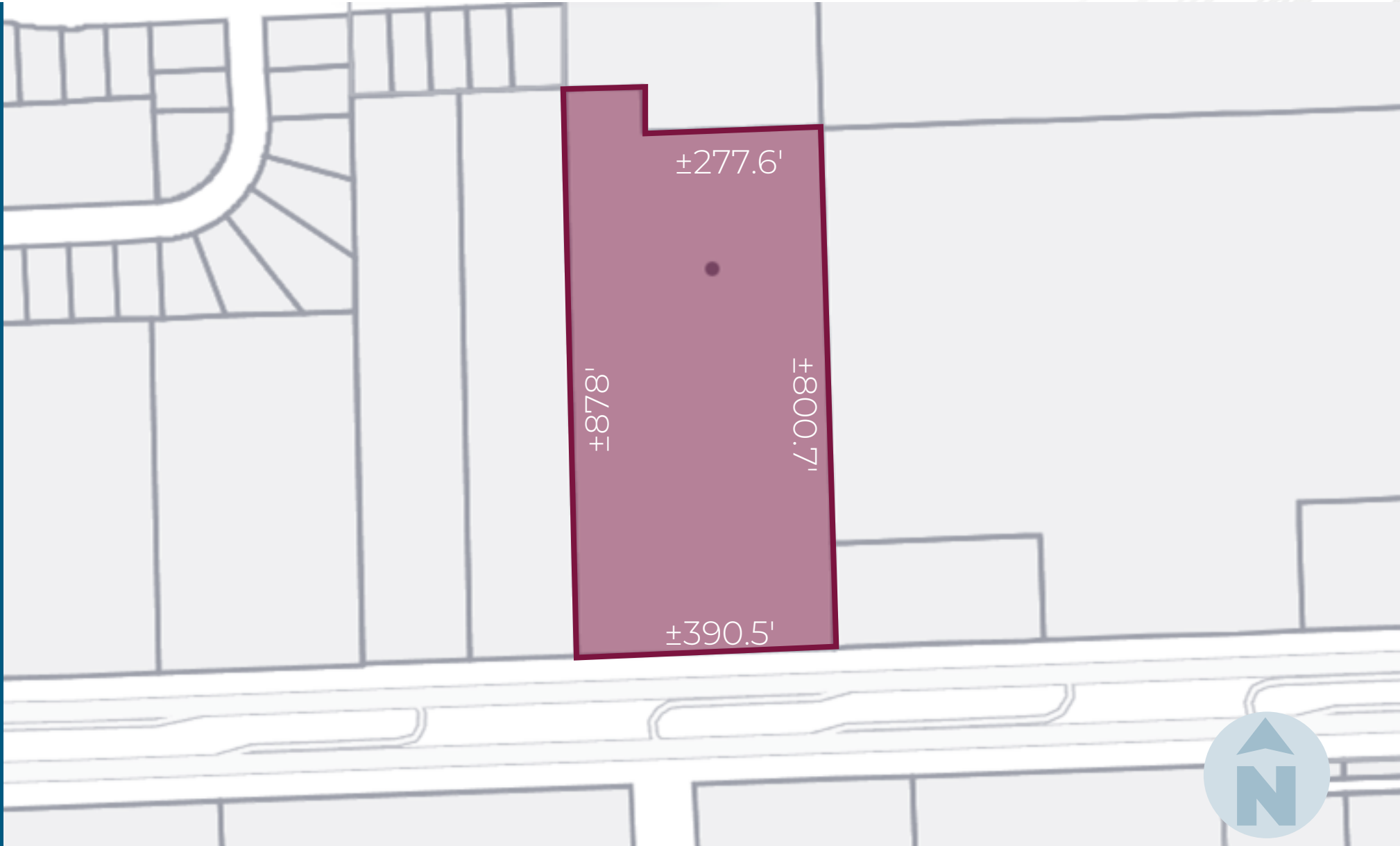
MICRO AERIAL



MACRO AERIAL



PLAT



SITE PHOTOS- FRONT VIEW



SITE PHOTOS- FRONT ENTRANCE



SITE PHOTOS- DINING ROOM



SITE PHOTOS- DINING ROOM & LOBBY



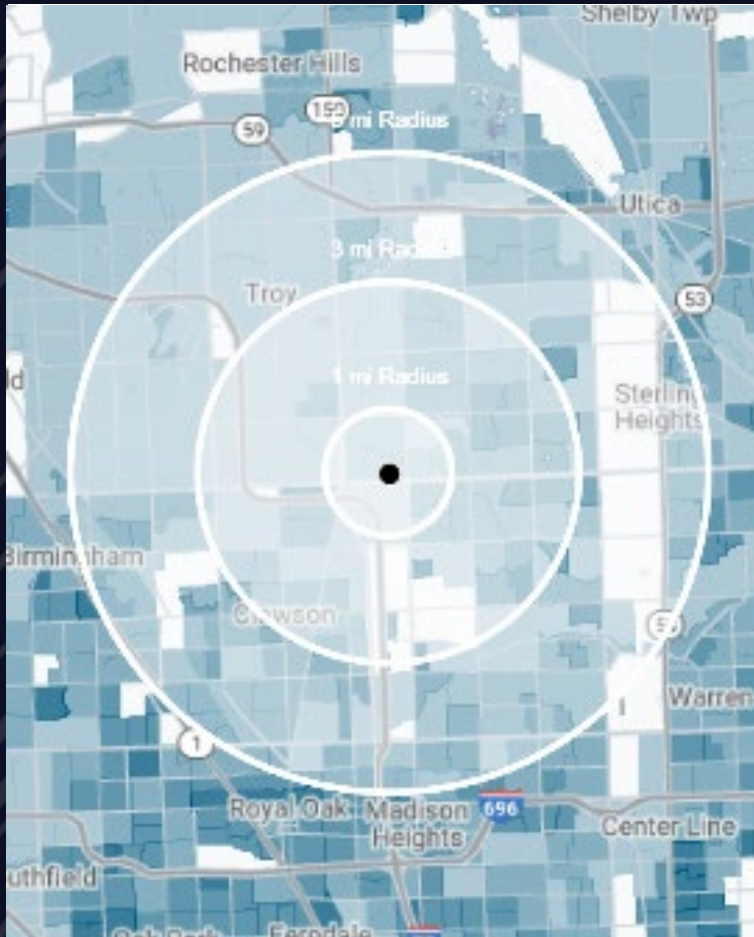
SITE PHOTOS- PATIO



SITE PHOTOS- PATIO



DEMOGRAPHICS



RESTAURANT SPACE FOR LEASE

1695 E. Big Beaver Rd, Troy, MI 48083

DEMOGRAPHICS

POPULATION

	1 MILE	3 MILE	5 MILE
2023 Estimated Population	10,667	101,449	260,040
2028 Projected Population	10,823	101,504	260,026
2020 Census Population	10,643	101,818	260,846
2010 Census Population	9,714	96,555	249,219
Projected Annual Growth 2023 to 2028	0.3%	-	-
Historical Annual Growth 2010 to 2023	0.8%	0.4%	0.3%

HOUSEHOLDS

2023 Estimated Households	4,084	39,210	107,820
2028 Projected Households	4,160	39,466	108,343
2020 Census Households	4,009	38,802	106,768
2010 Census Households	3,610	36,437	100,717
Projected Annual Growth 2023 to 2028	0.4%	0.1%	-
Historical Annual Growth 2010 to 2023	1.0%	0.6%	0.5%

RACE

2023 Est. White	65.0%	72.3%	74.7%
2023 Est. Black	5.3%	5.9%	6.1%
2023 Est. Asian or Pacific Islander	24.7%	17.3%	14.8%
2023 Est. American Indian or Alaska Native	0.1%	0.1%	0.1%
2023 Est. Other Races	4.8%	4.4%	4.3%

INCOME

2023 Est. Average Household Income	\$126,274	\$116,724	\$123,373
2023 Est. Median Household Income	\$103,375	\$89,226	\$94,621
2023 Est. Per Capita Income	\$48,369	\$45,174	\$51,207

BUSINESS

2023 Est. Total Businesses	624	6,330	13,624
2023 Est. Total Employees	9,480	88,287	203,932

CONTACT US



**LOUIS J.
CIOTTI**

Managing Director

lciotti@landmarkcres.com

248 488 2620

LANDMARK
COMMERCIAL ▲ REAL ESTATE ▲ SERVICES

30500 Northwestern Hwy, Suite 200
Farmington Hills, MI 48334
248.488.2620
landmarkcres.com

LANDMARK COMMERCIAL REAL ESTATE SERVICES – Licensed Real Estate Brokers. The information above has been obtained from sources believed reliable. While we do not doubt its accuracy, we have not verified it and make no guarantee, warranty or representation about it. It is your responsibility to independently confirm its accuracy and completeness. Any projections, opinions, assumptions or estimates are used for example only and do not represent the current or future performance of the property. The value of this transaction to you depends on tax and other factors which should be evaluated by your tax, financial and legal advisors. You and your advisors should conduct a careful, independent investigation of the property to determine to your satisfaction, the suitability of the property for your needs.