

FOR LEASE
FORMER CVS

22000 ECORSE RD, TAYLOR, MI 48180



PROPERTY DETAILS

LOCATION:	22000 Ecorse Rd, Taylor, MI 48180
PROPERTY TYPE:	Freestanding
DATE AVAILABLE:	January 31 st , 2024
RENT:	\$15.00/SF (Minimum Rent)
NNN EXPENSES:	Self-Maintain
PROPERTY TAXES:	\$2.25/SF (Real Estate Taxes)
BUILDING SIZE:	10,880 SF
AVAILABLE SPACE:	10,880 SF
ZONING:	B-3
TRAFFIC COUNT:	Ecorse Rd (17, 076 CPD) Monroe Blvd (6,248 CPD)

EXCLUSIVELY LISTED BY:



DAVID M. WARD
Director
dward@landmarkcres.com
248 488 2620



MATTHEW D. SWANTKO
Principal
mswankog@landmarkcres.com
248 488 2620

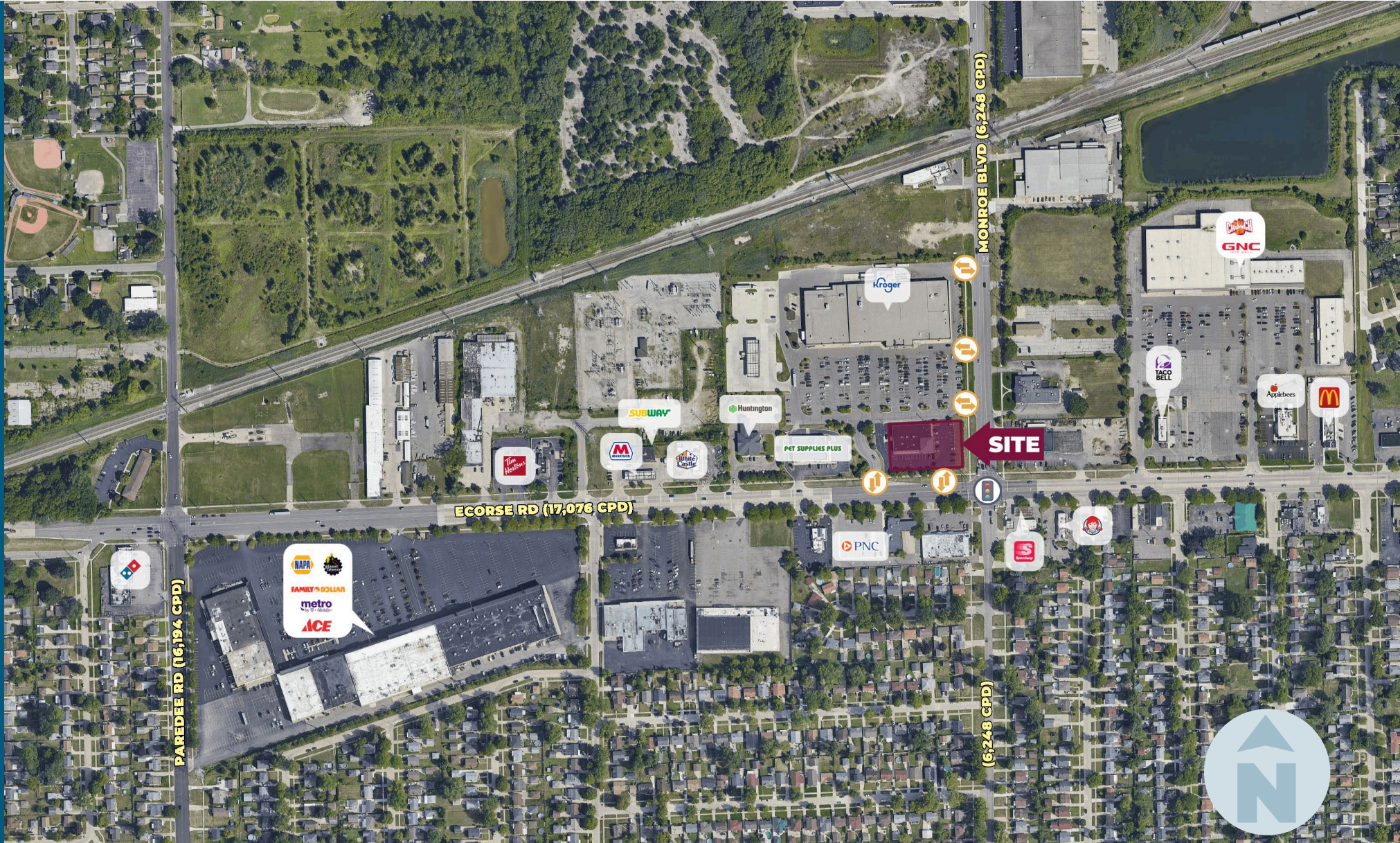
HIGHLIGHTS

- Real Estate Taxes: \$2.25/SF
- Building and Monument Signage Available.
- Frontage 272' on Ecorse Rd (with 2 Curb Cuts).
- Anchored by Kroger & Pet Supply Plus.
- Dual Drive-Thru Available.

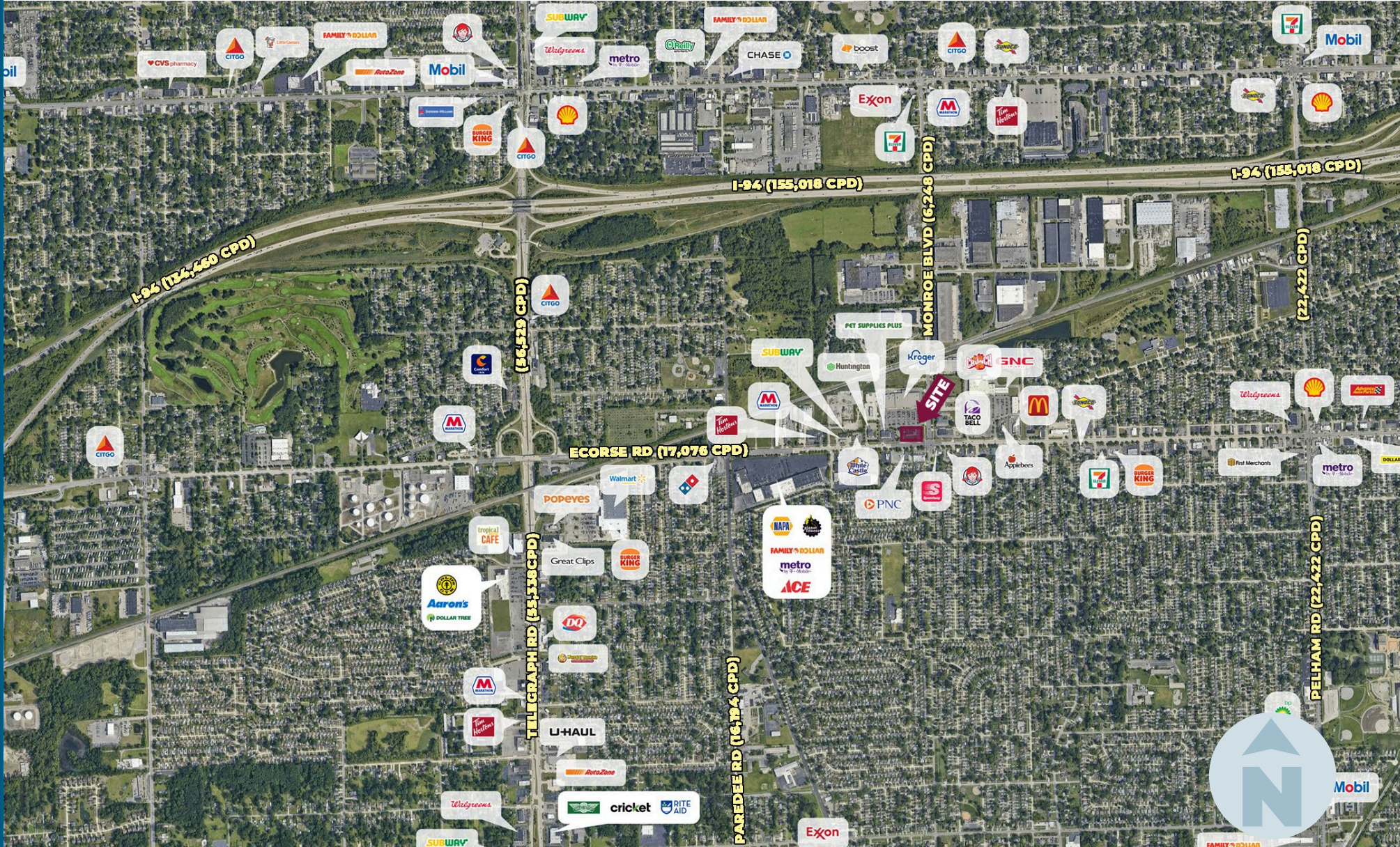
SITE PHOTOS



MICRO AERIAL



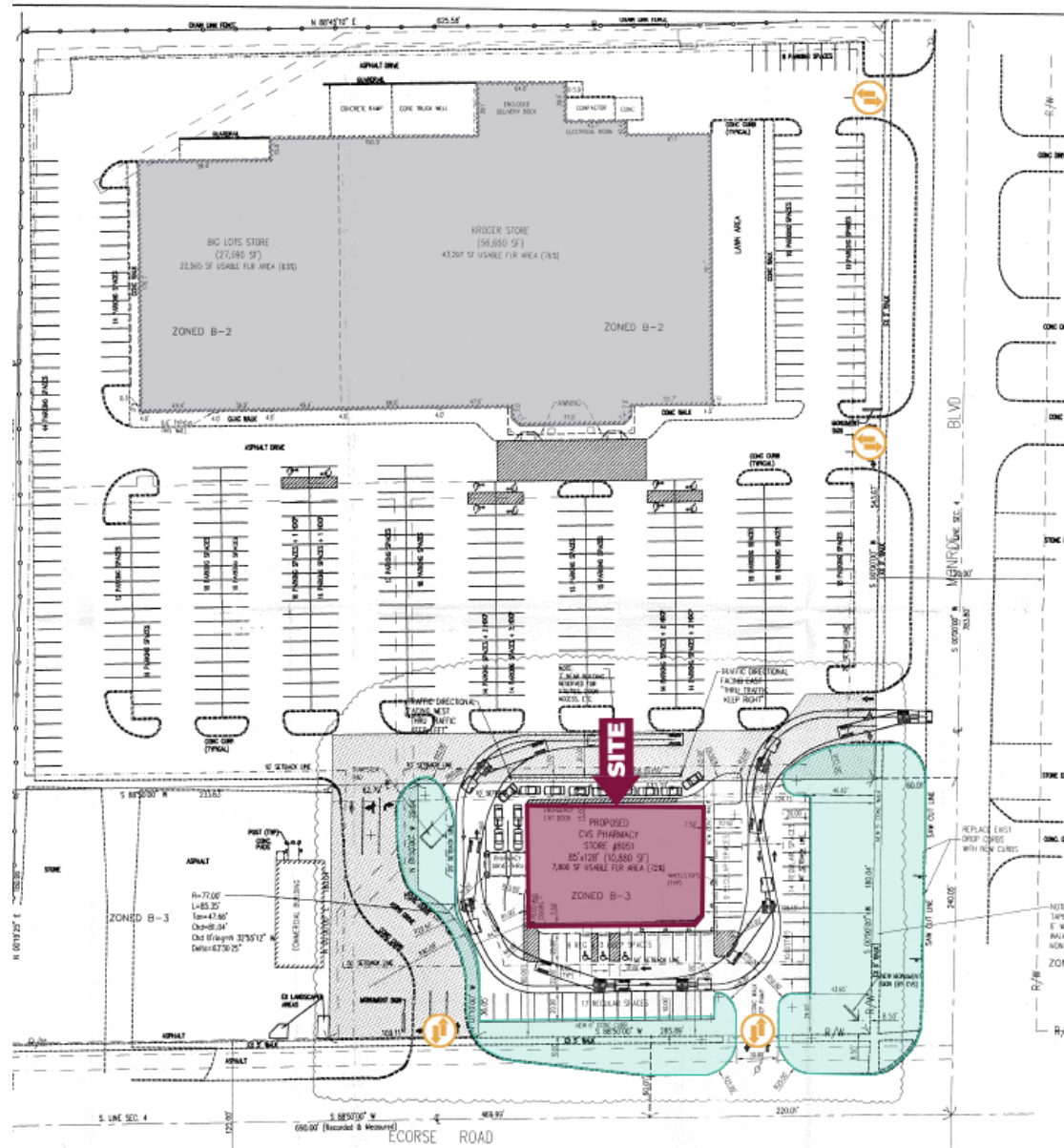
MACRO AERIAL



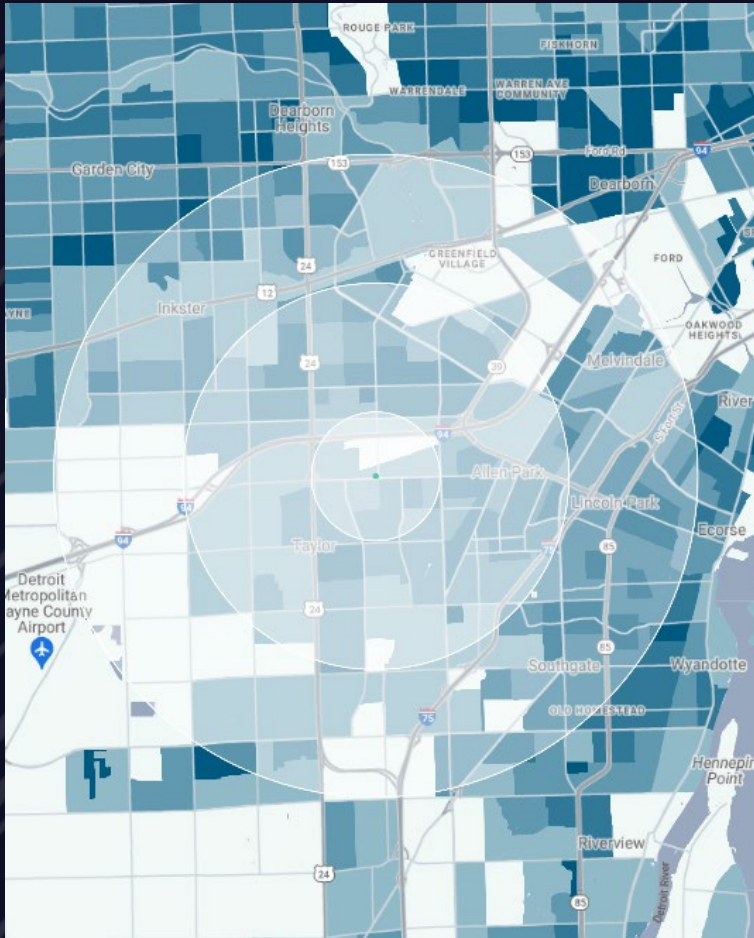
PLAT



PLANS



DEMOGRAPHICS



FORMER CVS

22000 Ecorse Rd, Taylor, MI 48180

DEMOGRAPHICS

POPULATION	1 MILE	3 MILE	5 MILE
2023 Estimated Population	12,686	121,427	275,293
2028 Projected Population	12,375	118,405	269,031
2020 Census Population	12,910	123,599	280,584
2010 Census Population	13,007	119,746	269,292
Projected Annual Growth 2023 to 2028	-0.5%	-0.5%	-0.5%
Historical Annual Growth 2010 to 2023	-0.2%	0.1%	0.2%
HOUSEHOLDS			
2023 Estimated Households	5,184	49,350	111,192
2028 Projected Households	5,010	47,589	107,489
2020 Census Households	5,217	49,716	112,187
2010 Census Households	5,047	48,144	108,225
Projected Annual Growth 2023 to 2028	-0.7%	-0.7%	-0.7%
Historical Annual Growth 2010 to 2023	0.2%	0.2%	0.2%
RACE			
2023 Est. White	80.1%	76.1%	68.9%
2023 Est. Black	9.1%	13.0%	18.5%
2023 Est. Asian or Pacific Islander	1.2%	1.6%	2.1%
2023 Est. American Indian or Alaska Native	0.5%	0.4%	0.4%
2023 Est. Other Races	9.1%	8.9%	10.1%
INCOME			
2023 Est. Average Household Income	\$85,485	\$86,766	\$85,814
2023 Est. Median Household Income	\$68,364	\$64,807	\$63,256
2023 Est. Per Capita Income	\$34,950	\$35,318	\$34,749
BUSINESS			
2023 Est. Total Businesses	322	2,900	8,264
2023 Est. Total Employees	3,019	28,572	97,266

CONTACT US



**DAVID M.
WARD**

Director

dward@landmarkcres.com

248 488 2620



**MATTHEW D.
SWANTKO**

Principal

mswantko@landmarkcres.com

248 488 2620

LANDMARK
COMMERCIAL ▲ REAL ESTATE ▲ SERVICES

30500 Northwestern Hwy, Suite 200
Farmington Hills, MI 48334
248.488.2620
landmarkcres.com

LANDMARK COMMERCIAL REAL ESTATE SERVICES – Licensed Real Estate Brokers. The information above has been obtained from sources believed reliable. While we do not doubt its accuracy, we have not verified it and make no guarantee, warranty or representation about it. It is your responsibility to independently confirm its accuracy and completeness. Any projections, opinions, assumptions or estimates are used for example only and do not represent the current or future performance of the property. The value of this transaction to you depends on tax and other factors which should be evaluated by your tax, financial and legal advisors. You and your advisors should conduct a careful, independent investigation of the property to determine to your satisfaction, the suitability of the property for your needs.