

FOR LEASE

SUBLEASE SPACE – WOODLAND SQUARE

2337 JOLLY RD, OKEMOS, MI 48864

2,105 SF
AVAILABLE



PROPERTY DETAILS

\$17.00/SF NNN

2,105 SF

RENT

AVAILABLE

LOCATION: 2337 Jolly Rd, Okemos, MI 48864

PROPERTY TYPE: Shopping Center

DATE AVAILABLE: Immediately

RENT: \$17.00/NNN

TERM: 12-Month Sublease
(Expires 10/31/24)

PROPERTY TAXES: \$49,678.80

LOT SIZE: 1.87 AC

AVAILABLE SPACE: 2,105 SF

ZONING: B1

TRAFFIC COUNT: Jolly Rd (11,341 CPD)
Okemos Rd (27,299 CPD)

EXCLUSIVELY LISTED BY:

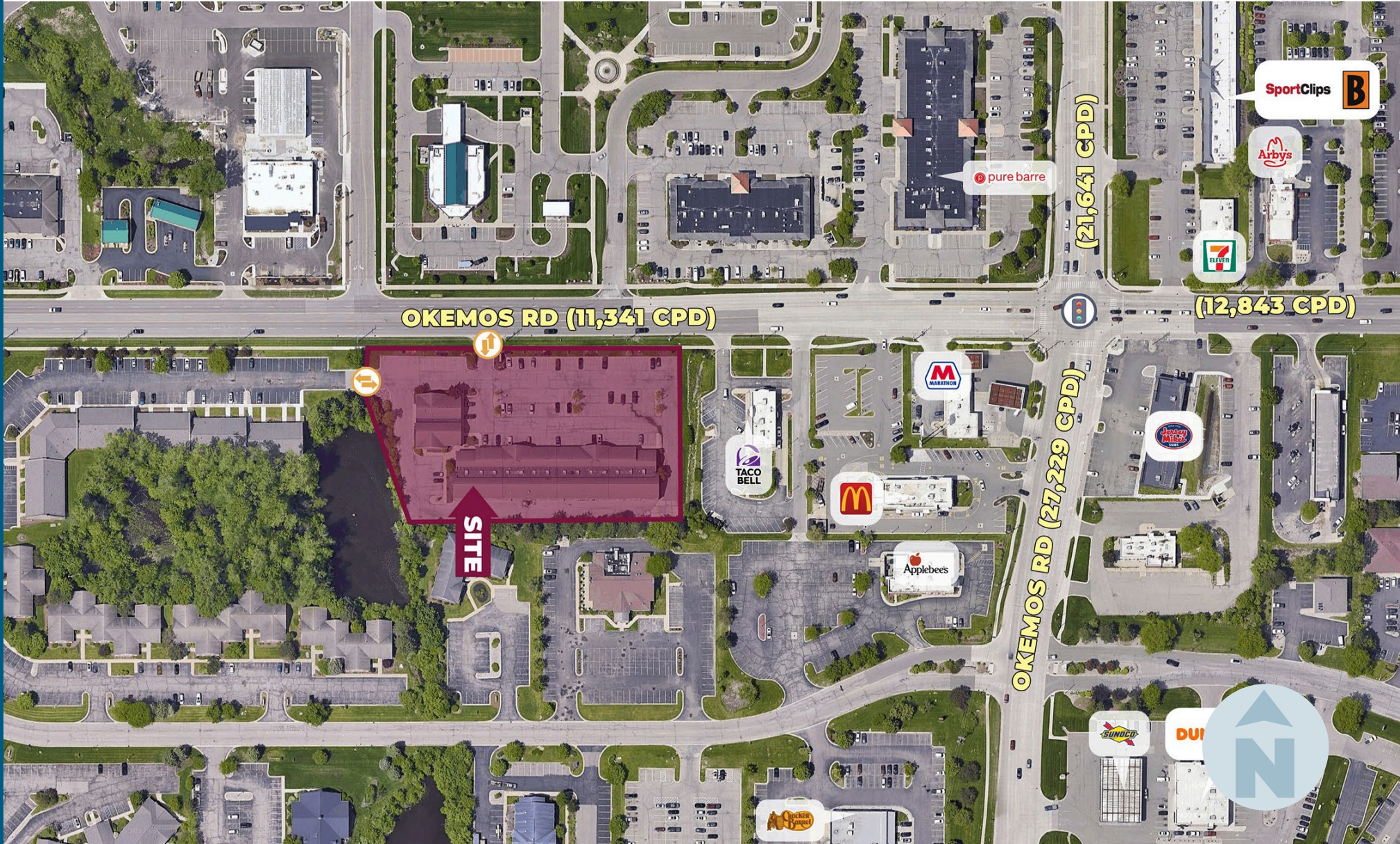


LOUIS J. CIOTTI
Managing Director
lciotti@landmarkcres.com
248 488 2620

HIGHLIGHTS

- 12-Month Sublease Space (Expires 10/31/24)
- Close Proximity to Okemos/I-96 Interchange
- Many National Retailers & Restaurants Nearby
- Doorstep Parking
- Turn-Key Office Facility w/5 Offices

MICRO AERIAL



MACRO AERIAL



SITE PHOTOS

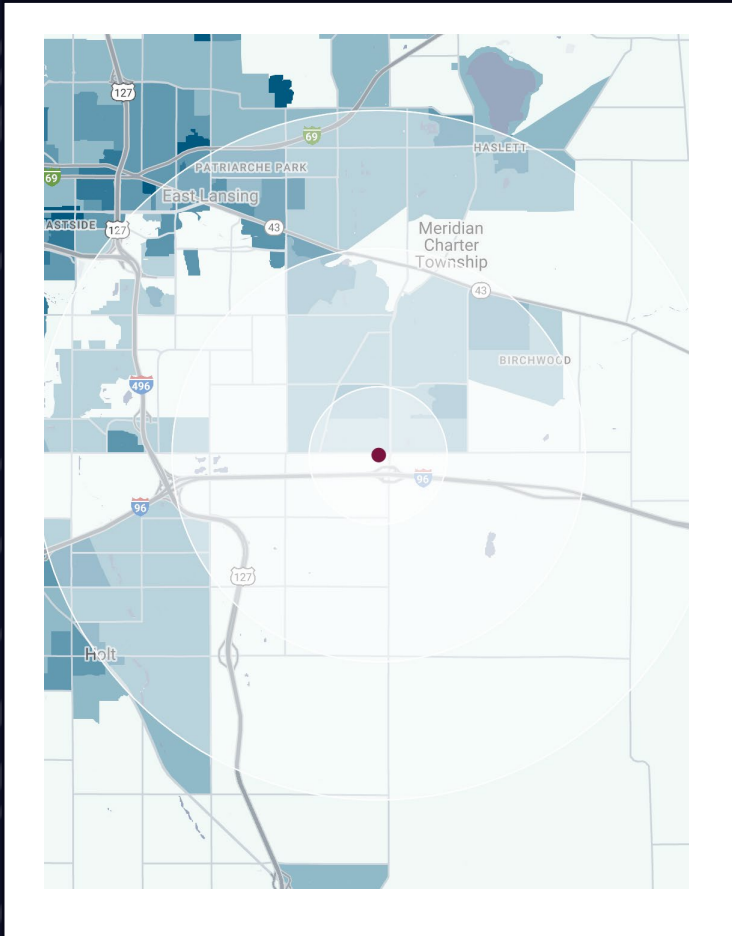


PYLON | JOLLY RD



INTERIOR

DEMOGRAPHICS



SUBLEASE SPACE

2337 Jolly Rd
Okemos, MI 48864

DEMOGRAPHICS

POPULATION

	1 MILE	3 MILE	5 MILE
2023 Estimated Population	4,583	22,020	91,237
2028 Projected Population	4,707	22,210	91,834
2020 Census Population	4,529	22,080	91,330
2010 Census Population	3,861	18,670	86,051
Projected Annual Growth 2023 to 2028	0.5%	0.2%	0.1%
Historical Annual Growth 2010 to 2023	1.4%	1.4%	0.5%

HOUSEHOLDS

2023 Estimated Households	1,839	8,861	33,137
2028 Projected Households	1,869	8,851	33,113
2020 Census Households	1,792	8,763	32,759
2010 Census Households	1,578	7,543	30,298
Projected Annual Growth 2023 to 2028	0.3%	-	-
Historical Annual Growth 2010 to 2023	1.3%	1.3%	0.7%

RACE

2023 Est. White	54.8%	65.7%	59.3%
2023 Est. Black	6.5%	6.3%	7.3%
2023 Est. Asian or Pacific Islander	32.0%	20.9%	27.1%
2023 Est. American Indian or Alaska Native	0.2%	0.2%	0.2%
2023 Est. Other Races	6.5%	6.9%	6.1%

INCOME

2023 Est. Average Household Income	\$157,019	\$151,483	\$107,180
2023 Est. Median Household Income	\$105,134	\$104,751	\$78,287
2023 Est. Per Capita Income	\$63,069	\$61,075	\$41,325

BUSINESS

2023 Est. Total Businesses	407	1,300	3,115
2023 Est. Total Employees	4,202	13,116	34,907

CONTACT US



**LOUIS J.
CIOTTI**

Managing Director

lciotti@landmarkcres.com

248 488 2620

LANDMARK
COMMERCIAL ▲ REAL ESTATE ▲ SERVICES

30500 Northwestern Hwy, Suite 200
Farmington Hills, MI 48334
248.488.2620
landmarkcres.com

LANDMARK COMMERCIAL REAL ESTATE SERVICES – Licensed Real Estate Brokers. The information above has been obtained from sources believed reliable. While we do not doubt its accuracy, we have not verified it and make no guarantee, warranty or representation about it. It is your responsibility to independently confirm its accuracy and completeness. Any projections, opinions, assumptions or estimates are used for example only and do not represent the current or future performance of the property. The value of this transaction to you depends on tax and other factors which should be evaluated by your tax, financial and legal advisors. You and your advisors should conduct a careful, independent investigation of the property to determine to your satisfaction, the suitability of the property for your needs.