

FOR LEASE

TURNKEY MEDICAL/ PROFESSIONAL OFFICE SUITE

22050 GREATER MACK AVE, ST. CLAIR SHORES, MI

3,175 SF
AVAILABLE



PROPERTY DETAILS

\$15.00/SF NNN

\$4.00/SF

RENT

NNN

LOCATION:	22050 Greater Mack Ave, St. Clair Shores, MI
PROPERTY TYPE:	Shopping Center
DATE AVAILABLE:	Immediately
RENT:	\$15.00/SF NNN
NNN EXPENSE:	\$4.00/SF
AVAILABLE SPACE:	3,175 SF
ZONING:	B-1
TRAFFIC COUNT:	Greater Mack Ave (17,531 CPD)



HIGHLIGHTS

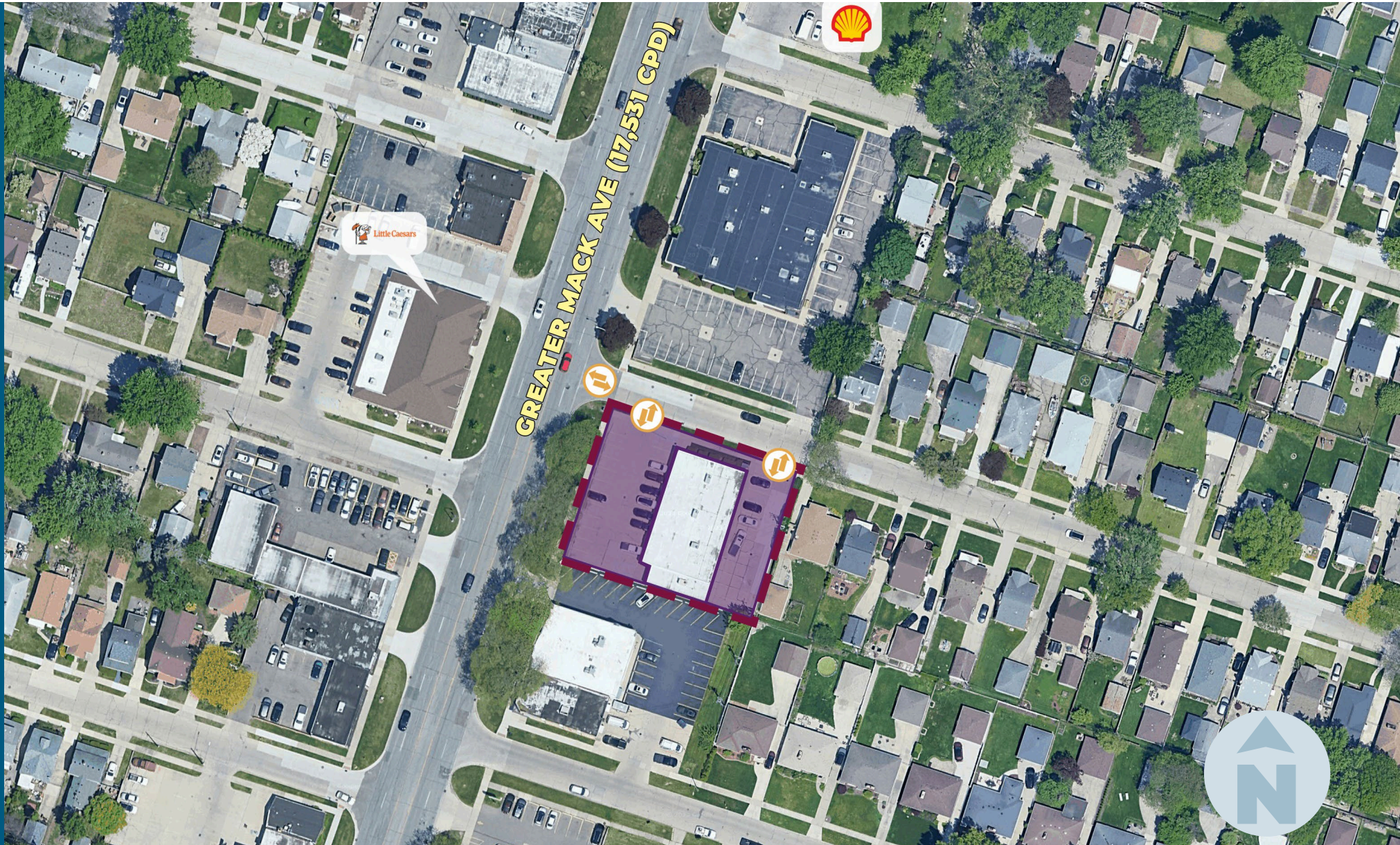
- Highly visible endcap space available
- Ample parking
- Well-designed turnkey medical office space
- Minutes from Grosse Pointe

EXCLUSIVELY LISTED BY:



ANTHONY J. VITALE
Director
avitale@landmarkres.com
248 488 2620

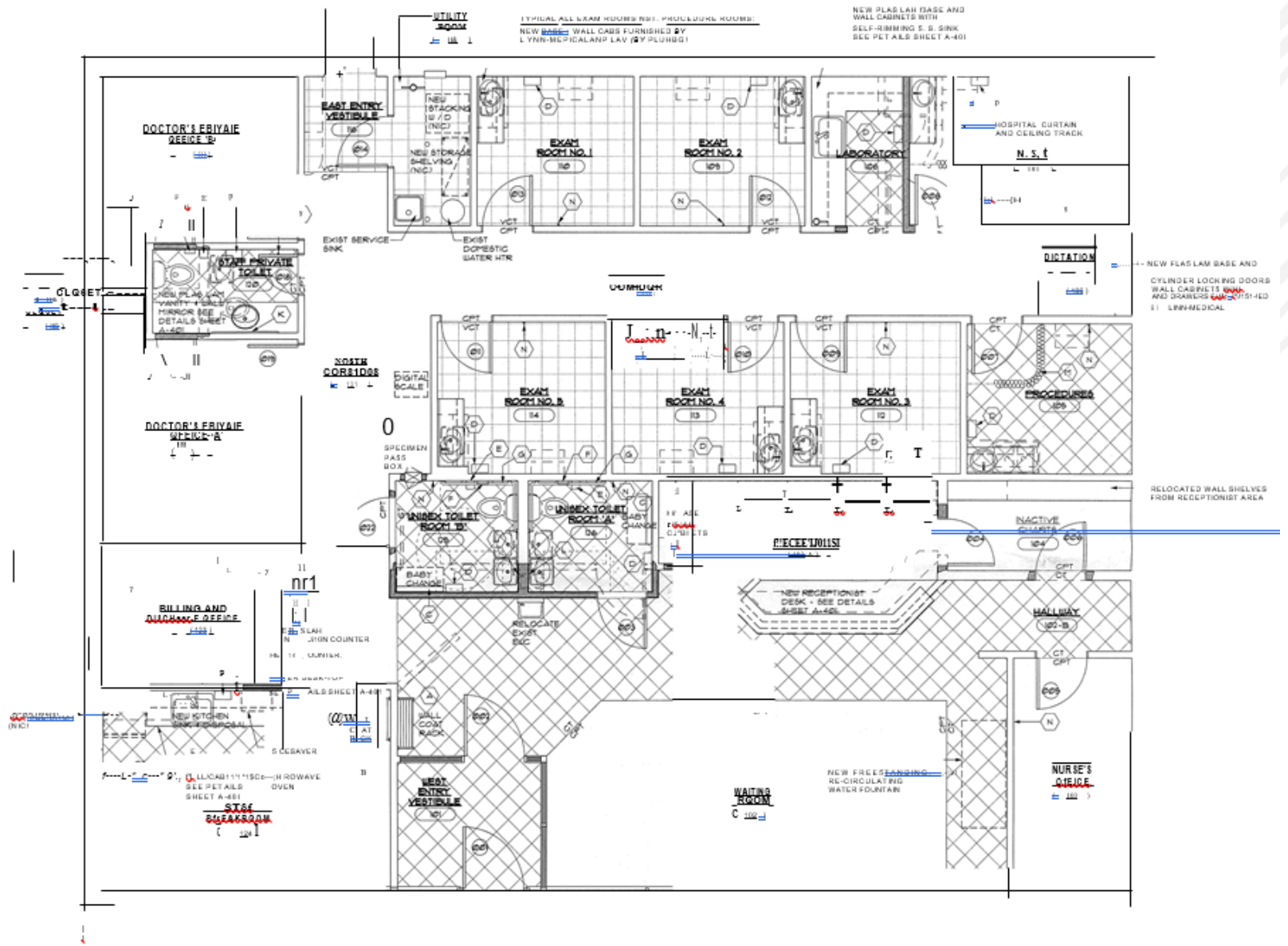
MICRO AERIAL



MACRO AERIAL



FLOOR PLAN



DEMOGRAPHICS



TURNKEY MEDICAL/ PROFESSIONAL OFFICE SUITE

22050 Greater Mack Ave, St. Clair Shores, MI

DEMOGRAPHICS

POPULATION

	1 MILE	3 MILE	5 MILE
2023 Estimated Population	17,990	114,808	263,113
2028 Projected Population	17,608	113,090	260,948
2020 Census Population	18,258	115,941	264,558
2010 Census Population	18,550	114,550	273,030
Projected Annual Growth 2023 to 2028	-0.4%	-0.3%	-0.2%
Historical Annual Growth 2010 to 2023	-0.2%	-	-0.3%

HOUSEHOLDS

2023 Estimated Households	8,241	48,005	105,106
2028 Projected Households	8,145	47,557	104,663
2020 Census Households	8,278	47,917	104,544
2010 Census Households	8,167	46,836	105,602
Projected Annual Growth 2023 to 2028	-0.2%	-0.2%	-
Historical Annual Growth 2010 to 2023	-	0.2%	-

RACE

2023 Est. White	81.9%	59.4%	52.9%
2023 Est. Black	11.3%	34.8%	41.2%
2023 Est. Asian or Pacific Islander	2.0%	1.5%	1.5%
2023 Est. American Indian or Alaska Native	0.2%	0.1%	0.2%
2023 Est. Other Races	4.6%	4.2%	4.2%

INCOME

2023 Est. Average Household Income	\$97,826	\$97,881	\$94,482
2023 Est. Median Household Income	\$77,475	\$73,127	\$68,899
2023 Est. Per Capita Income	\$44,854	\$40,998	\$37,817

BUSINESS

2023 Est. Total Businesses	860	3,848	8,251
2023 Est. Total Employees	6,609	28,283	67,560

CONTACT US



**ANTHONY J.
VITALE**

Director

avitale@landmarkcres.com

248 488 2620

LANDMARK
COMMERCIAL ▲ REAL ESTATE ▲ SERVICES

30500 Northwestern Hwy, Suite 200
Farmington Hills, MI 48334
248.488.2620
landmarkcres.com

LANDMARK COMMERCIAL REAL ESTATE SERVICES – Licensed Real Estate Brokers. The information above has been obtained from sources believed reliable. While we do not doubt its accuracy, we have not verified it and make no guarantee, warranty or representation about it. It is your responsibility to independently confirm its accuracy and completeness. Any projections, opinions, assumptions or estimates are used for example only and do not represent the current or future performance of the property. The value of this transaction to you depends on tax and other factors which should be evaluated by your tax, financial and legal advisors. You and your advisors should conduct a careful, independent investigation of the property to determine to your satisfaction, the suitability of the property for your needs.