

FOR LEASE

TURNKEY MEDICAL/ PROFESSIONAL OFFICE SUITE

22020-22050 GREATER MACK AVE, ST. CLAIR SHORES, MI

**3,175 SF
AVAILABLE**

**1,500 SF
AVAILABLE**

**700 SF
AVAILABLE**

PROPERTY DETAILS

LOCATION:	22020-22050 Greater Mack Ave, St. Clair Shores, MI
PROPERTY TYPE:	Shopping Center
DATE AVAILABLE:	Immediately
RENT:	\$15.00/SF NNN
NNN EXPENSE:	\$4.00/SF
AVAILABLE SPACE:	700 SF - 3,175 SF
BUILDING SIZE:	5,375 SF
ZONING:	B-1
TRAFFIC COUNT:	Greater Mack Ave (17,531 CPD)

EXCLUSIVELY LISTED BY:



**ANTHONY J.
VITALE**

Director
avitale@landmarkcres.com
248 488 2620

\$15.00/SF NNN

\$4.00/SF

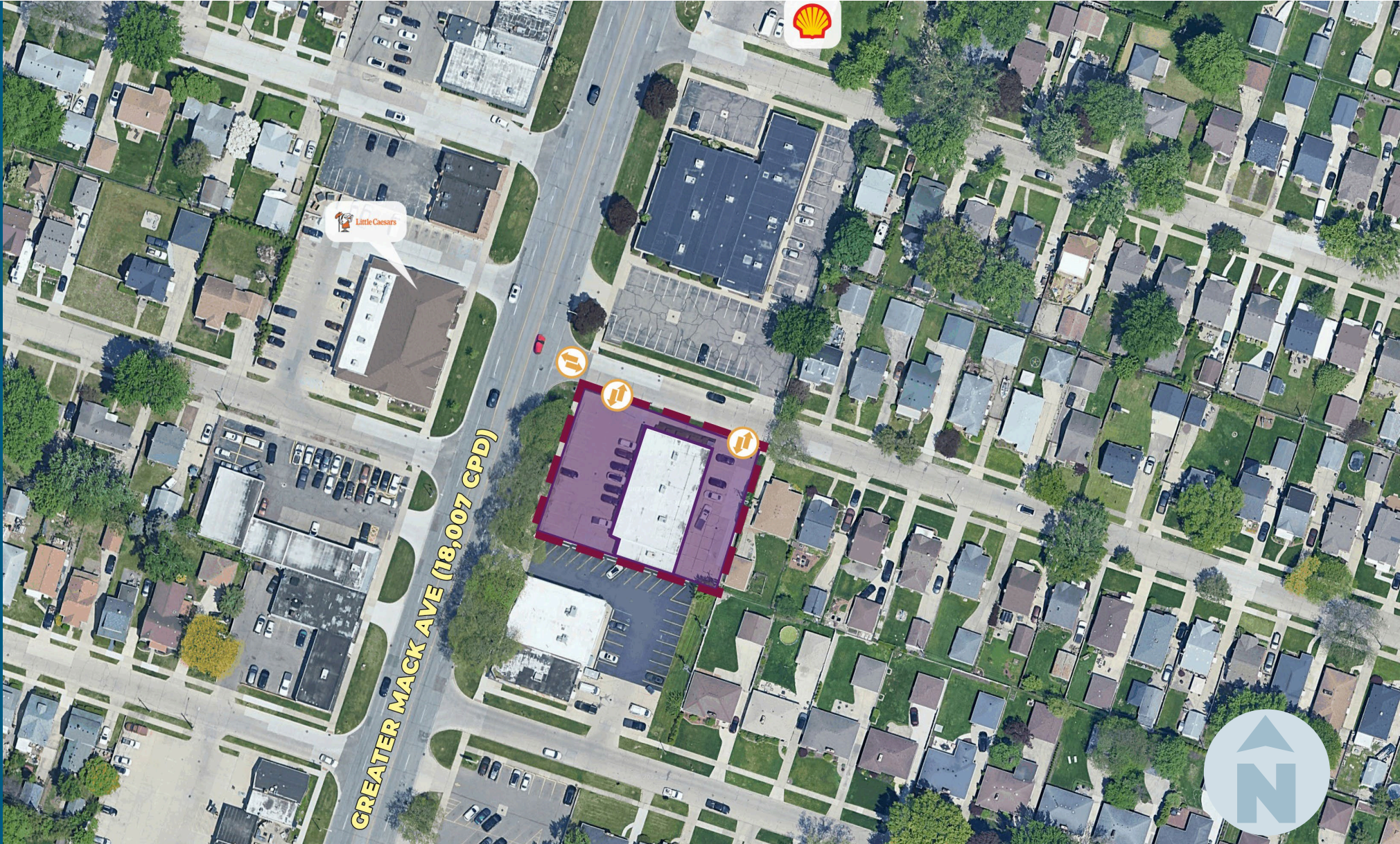
RENT

NNN

HIGHLIGHTS

- Highly visible endcap spaces available
- Ample parking
- Well-designed turnkey medical office space (3,175 SF)
- Turnkey medical spa space (1,500 SF)
- Small office/retail endcap space (700 SF)
- Minutes from Grosse Pointe

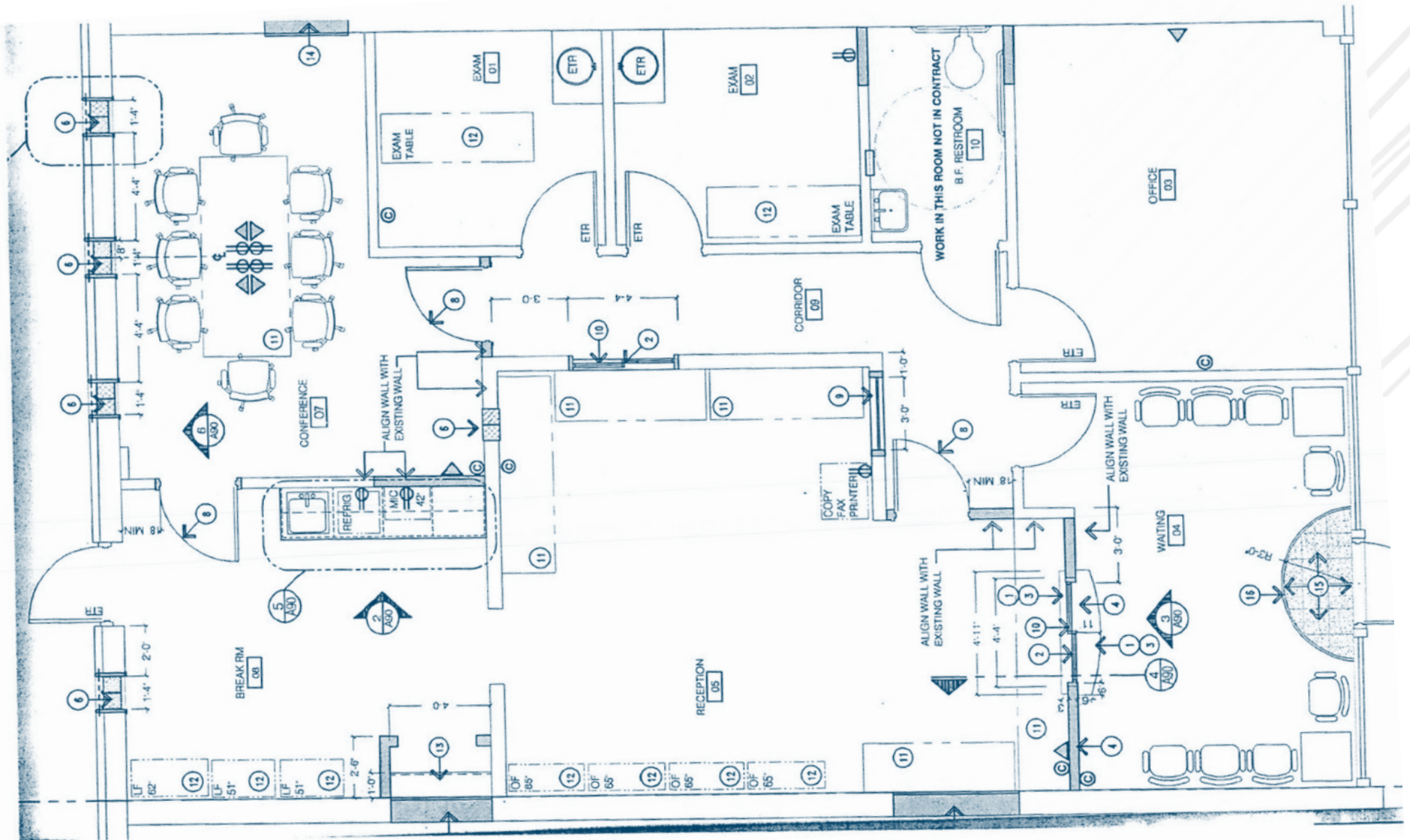
MICRO AERIAL



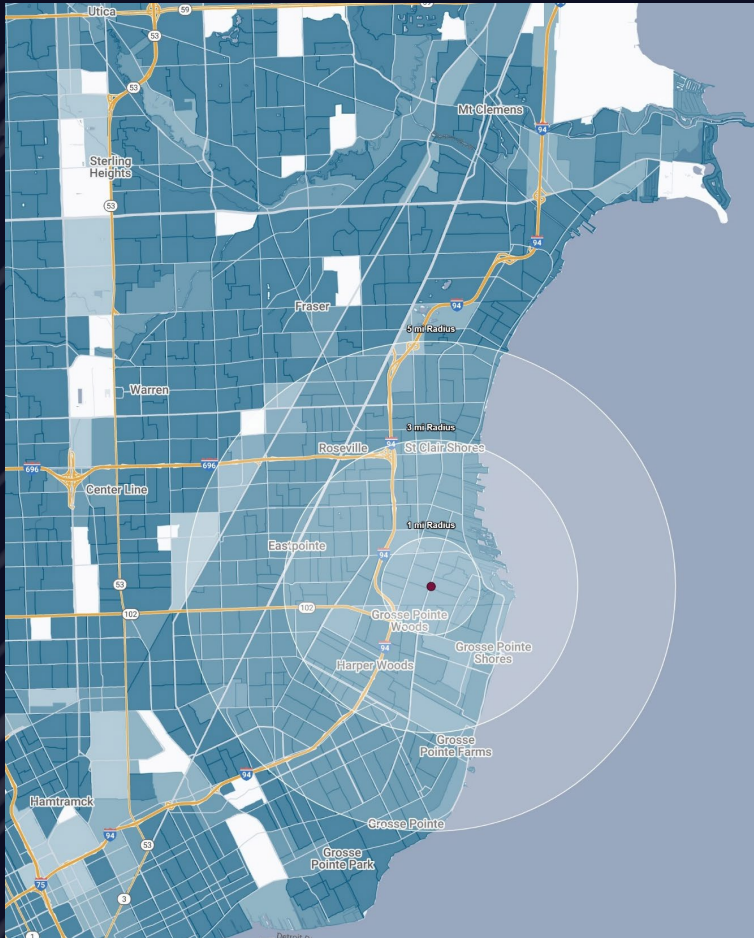
MACRO AERIAL



FLOOR PLAN – 1,500 SF TURNKEY MEDICAL SPA SPACE



DEMOGRAPHICS



TURNKEY MEDICAL/ PROFESSIONAL OFFICE SUITE

22050 Greater Mack Ave, St. Clair Shores, MI

DEMOGRAPHICS

POPULATION	1 MILE	3 MILE	5 MILE
2025 Estimated Population	17,981	114,764	263,994
2030 Projected Population	17,665	111,970	258,063
2020 Census Population	18,258	115,941	264,558
2010 Census Population	18,550	114,550	273,030
Projected Annual Growth 2025 to 2030	-0.4%	-0.5%	-0.4%
Historical Annual Growth 2010 to 2025	-0.2%	-	-0.2%
HOUSEHOLDS			
2025 Estimated Households	8,296	47,664	105,976
2030 Projected Households	8,284	47,273	105,311
2020 Census Households	8,278	47,917	104,544
2010 Census Households	8,167	46,836	105,602
Projected Annual Growth 2025 to 2030	-	-0.2%	-0.1%
Historical Annual Growth 2010 to 2025	0.1%	0.1%	-
RACE			
2025 Est. White	78.0%	60.3%	54.3%
2025 Est. Black	14.0%	33.0%	39.1%
2025 Est. Asian or Pacific Islander	2.8%	2.2%	2.1%
2025 Est. American Indian or Alaska Native	0.2%	0.2%	0.2%
2025 Est. Other Races	5.0%	4.4%	4.3%
INCOME			
2025 Est. Average Household Income	\$99,619	\$100,264	\$94,133
2025 Est. Median Household Income	\$82,772	\$78,528	\$73,404
2025 Est. Per Capita Income	\$46,004	\$41,715	\$37,870
BUSINESS			
2025 Est. Total Businesses	911	4,027	8,493
2025 Est. Total Employees	6,952	29,328	69,399

CONTACT US



**ANTHONY J.
VITALE**

Director

avitale@landmarkcres.com

248 488 2620

LANDMARK
COMMERCIAL ▲ REAL ESTATE ▲ SERVICES

30500 Northwestern Hwy, Suite 200
Farmington Hills, MI 48334
248.488.2620
landmarkcres.com

LANDMARK COMMERCIAL REAL ESTATE SERVICES – Licensed Real Estate Brokers. The information above has been obtained from sources believed reliable. While we do not doubt its accuracy, we have not verified it and make no guarantee, warranty or representation about it. It is your responsibility to independently confirm its accuracy and completeness. Any projections, opinions, assumptions or estimates are used for example only and do not represent the current or future performance of the property. The value of this transaction to you depends on tax and other factors which should be evaluated by your tax, financial and legal advisors. You and your advisors should conduct a careful, independent investigation of the property to determine to your satisfaction, the suitability of the property for your needs.