

FOR LEASE/SALE JOANN

600 BROWN RD, AUBURN HILLS, MI 48326

**GREAT LAKES
CROSSING OUTLETS**
1.3M SF



Durlington
TJ-maxx
FOREVER 21

ROUND1
NORDSTROM
rack



I-75
(82,097 CPD)



COSTCO
WHOLESALE

BEST BUY
BOB'S DISCOUNT
FURNITURE



TEXAS
WINDMILLS



BROWN RD
(17,730 CPD)

KOHL'S

HomeGoods
ULTA
BEAUTY

ASHLEY

petco
DSW
SHOE & ICE HARDWARE

MENARDS®

**44,105 SF
AVAILABLE**

PROPERTY DETAILS

LOCATION:	600 Brown Rd, Auburn Hills, MI 48326	
PROPERTY TYPE:	Power Center	
SALES PRICE:	Contact Broker	
RENT:	Contact Broker	
BUILDING SIZE:	44,105 SF	
BUILDING DIMENSIONS:	±190' x ±228'	
LOT SIZE:	8.81 AC	
AVAILABLE SPACE:	44,105 SF	
ZONING:	B-2	
TRAFFIC COUNT:	Brown Rd	(17,278 CPD)
	Joslyn Rd	(14,820 CPD)
	I-75	(82,097 CPD)

EXCLUSIVELY LISTED BY:



DANIEL H. KUKES
Principal
dkukes@landmarkcres.com
248 488 2620



DAVID M. WARD
Director
dward@landmarkcres.com
248 488 2620

ANCHOR



HIGHLIGHTS

- The subject property sits adjacent to a well-performing Target and across from a Meijer.
- JOANN sits across from Great Lakes Crossing Outlet Mall-one of Michigan's best performing regional malls.
- Subject property has easy access to I-75 (82,097 CPD) through Brown and Joslyn Roads.
- I-75 is one of Metro-Detroit's busiest highways.

MACRO AERIAL



VIEW WEST



**GREAT LAKES
CROSSING OUTLETS**
1.3M SF



**44,105 SF
AVAILABLE**

I-75
(82,097 CPD)

BROWN RD
(17,730 CPD)



SURVEY

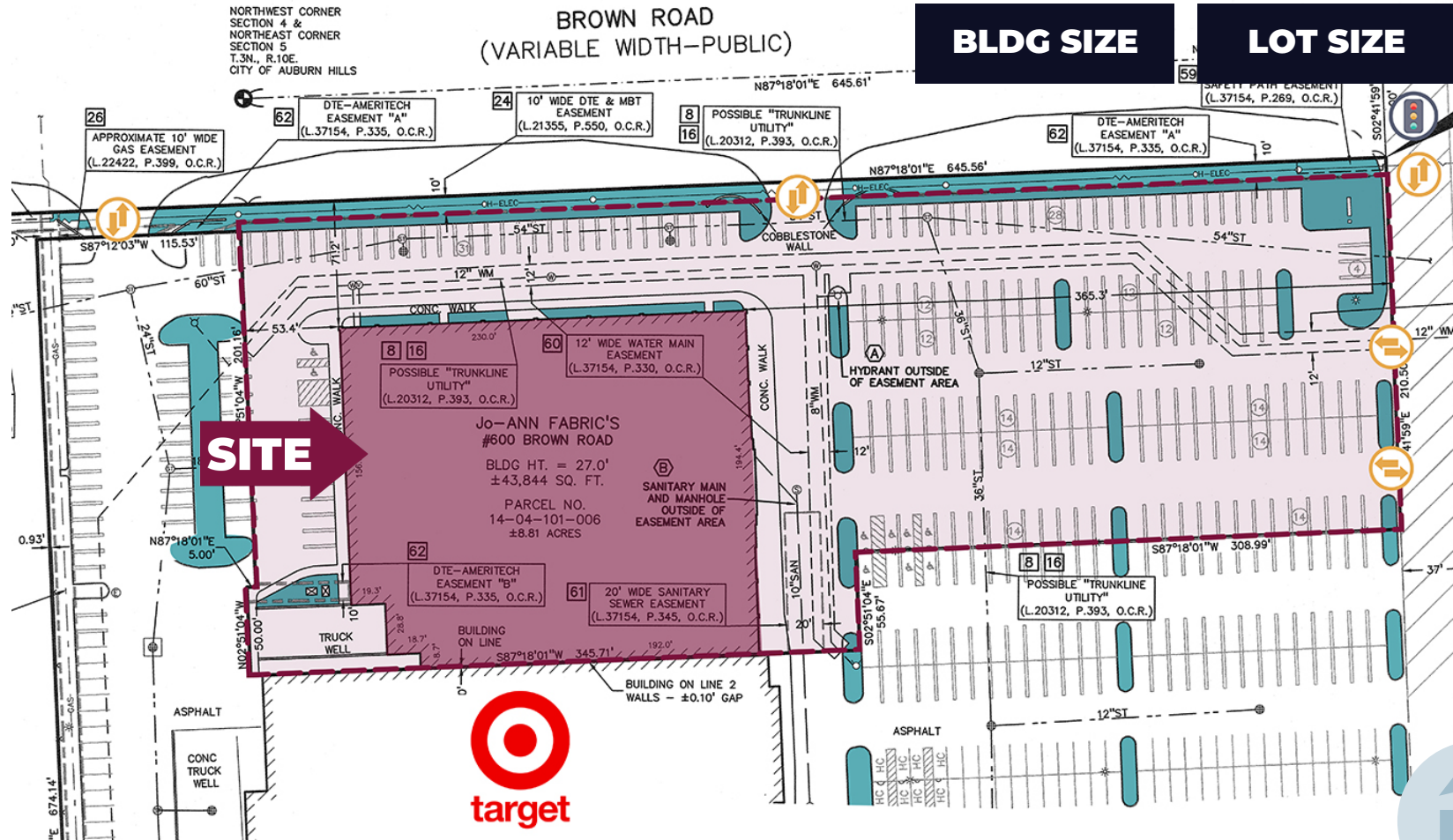
JOANN
600 Brown Rd, Auburn Hills, MI 48326

44,105 SF

8.81 AC

BLDG SIZE

LOT SIZE

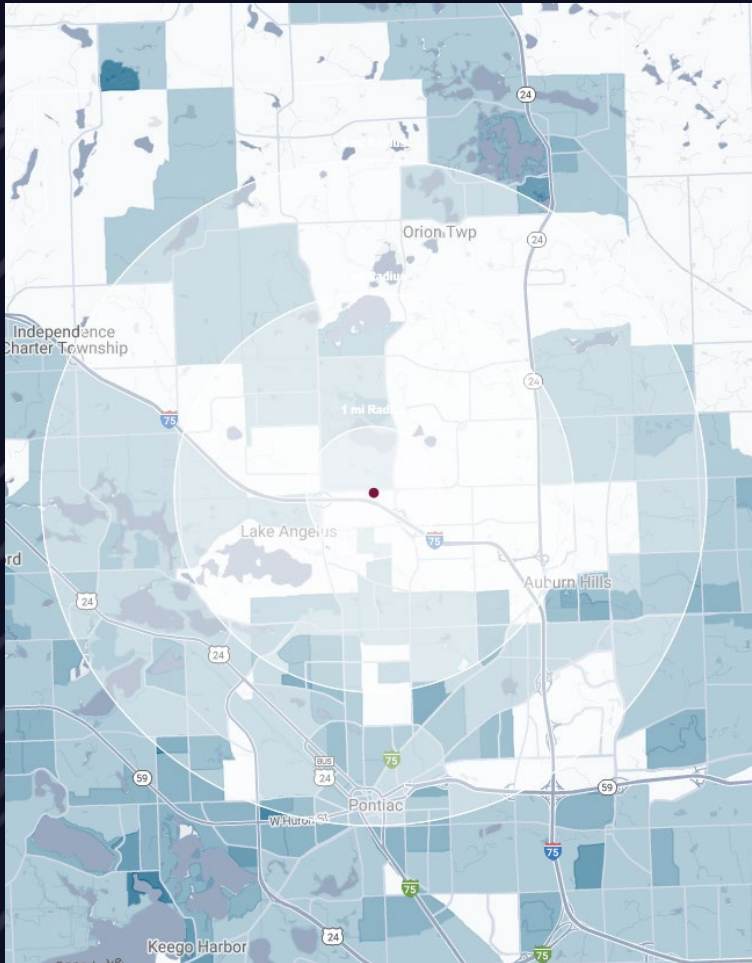


SITE PHOTOS



STOREFRONT

DEMOGRAPHICS



JOANN

600 Brown Rd, Auburn Hills, MI 48326

DEMOGRAPHICS

POPULATION

	1 MILE	3 MILE	5 MILE
2023 Estimated Population	921	39,340	135,007
2028 Projected Population	1,166	41,287	138,014
2020 Census Population	723	38,785	134,888
2010 Census Population	601	36,039	125,160
Projected Annual Growth 2023 to 2028	5.3%	1.0%	0.4%
Historical Annual Growth 2010 to 2023	4.1%	0.7%	0.6%

HOUSEHOLDS

2023 Estimated Households	311	16,252	53,379
2028 Projected Households	391	16,927	54,350
2020 Census Households	263	15,515	51,855
2010 Census Households	214	14,107	47,038
Projected Annual Growth 2023 to 2028	5.2%	0.8%	0.4%
Historical Annual Growth 2010 to 2023	3.5%	1.2%	1.0%

RACE

2023 Est. White	77.6%	62.6%	61.6%
2023 Est. Black	9.8%	18.1%	18.6%
2023 Est. Asian or Pacific Islander	4.9%	4.6%	7.9%
2023 Est. American Indian or Alaska Native	0.3%	0.5%	0.4%
2023 Est. Other Races	7.5%	14.2%	11.6%

INCOME

2023 Est. Average Household Income	\$140,746	\$101,170	\$115,010
2023 Est. Median Household Income	\$100,009	\$79,572	\$90,609
2023 Est. Per Capita Income	\$47,707	\$41,848	\$46,014

BUSINESS

2023 Est. Total Businesses	243	1,418	4,560
2023 Est. Total Employees	3,469	35,885	96,437

CONTACT US



**DANIEL H.
KUKES**

Principal

dkukes@landmarkcres.com

248 488 2620



**DAVID M.
WARD**

Director

dward@landmarkcres.com

248 488 2620

LANDMARK
COMMERCIAL ▲ REAL ESTATE ▲ SERVICES

30500 Northwestern Hwy, Suite 200
Farmington Hills, MI 48334
248.488.2620
landmarkcres.com

LANDMARK COMMERCIAL REAL ESTATE SERVICES – Licensed Real Estate Brokers. The information above has been obtained from sources believed reliable. While we do not doubt its accuracy, we have not verified it and make no guarantee, warranty or representation about it. It is your responsibility to independently confirm its accuracy and completeness. Any projections, opinions, assumptions or estimates are used for example only and do not represent the current or future performance of the property. The value of this transaction to you depends on tax and other factors which should be evaluated by your tax, financial and legal advisors. You and your advisors should conduct a careful, independent investigation of the property to determine to your satisfaction, the suitability of the property for your needs.