

FOR SALE

# INDUSTRIAL/WAREHOUSE BUILDING

20180 SHERWOOD ST, DETROIT, MI

**5,000 SF  
AVAILABLE**



## PROPERTY DETAILS

5,000 SF

\$499,000.00

**BUILDING SIZE**

**SALES PRICE**

<b>LOCATION:</b>	20180 Sherwood St, Detroit, MI
<b>PROPERTY TYPE:</b>	Freestanding
<b>DATE AVAILABLE:</b>	Immediately
<b>SALES PRICE:</b>	\$499,000.00
<b>PROPERTY TAXES:</b>	\$3,492.38
<b>BUILDING SIZE:</b>	5,000 SF
<b>LOT SIZE:</b>	0.27 AC
<b>LOT DIMENSIONS:</b>	101' X 120'
<b>ZONING:</b>	B-4
<b>TRAFFIC COUNT:</b>	Sherwood St (4,188 CPD)

### HIGHLIGHTS

- Freestanding Industrial/ Warehouse Building For Sale.
  - 4,200 SF (Warehouse)
  - 800 SF (Office)
- Fenced/ Gated Parking Lot.
- Newly Updated Roof and Mechanicals.
- Two Fully Renovated Bathrooms & Shower.
- Security Camera and Alarm System.

\*Grow License NOT Included.

EXCLUSIVELY LISTED BY:



**LOUIS J.  
CIOTTI**

Managing Director  
[lcotti@landmarkcres.com](mailto:lcotti@landmarkcres.com)  
248 488 2620

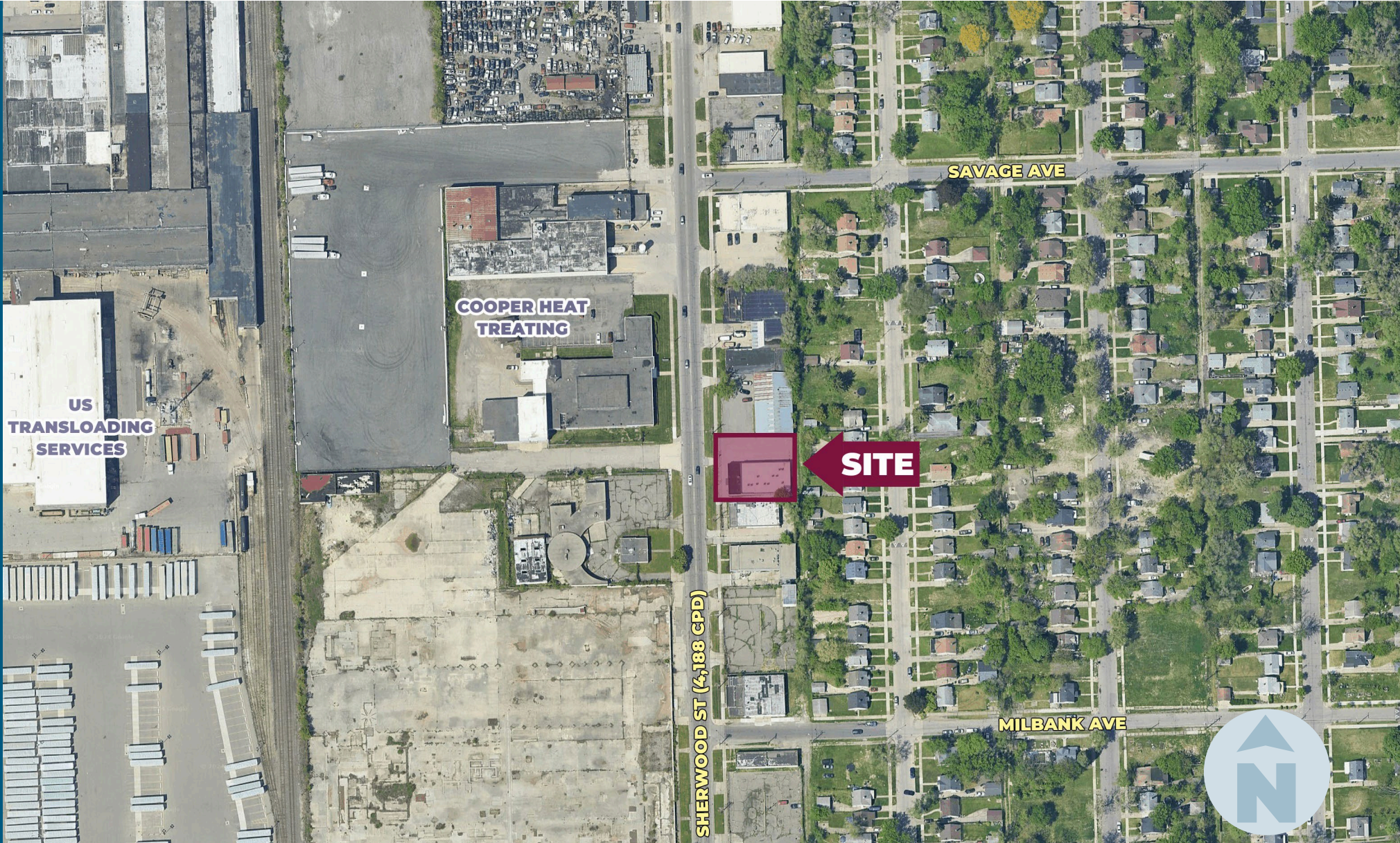


**ALESSANDRO D.  
BORTOLOTTI**

Associate  
[abortolotti@landmarkcres.com](mailto:abortolotti@landmarkcres.com)  
248 488 2620



# MICRO AERIAL





# MACRO AERIAL





# PLAT



SHERWOOD ST

±120'

±101'





# SITE PHOTOS





# SITE PHOTOS



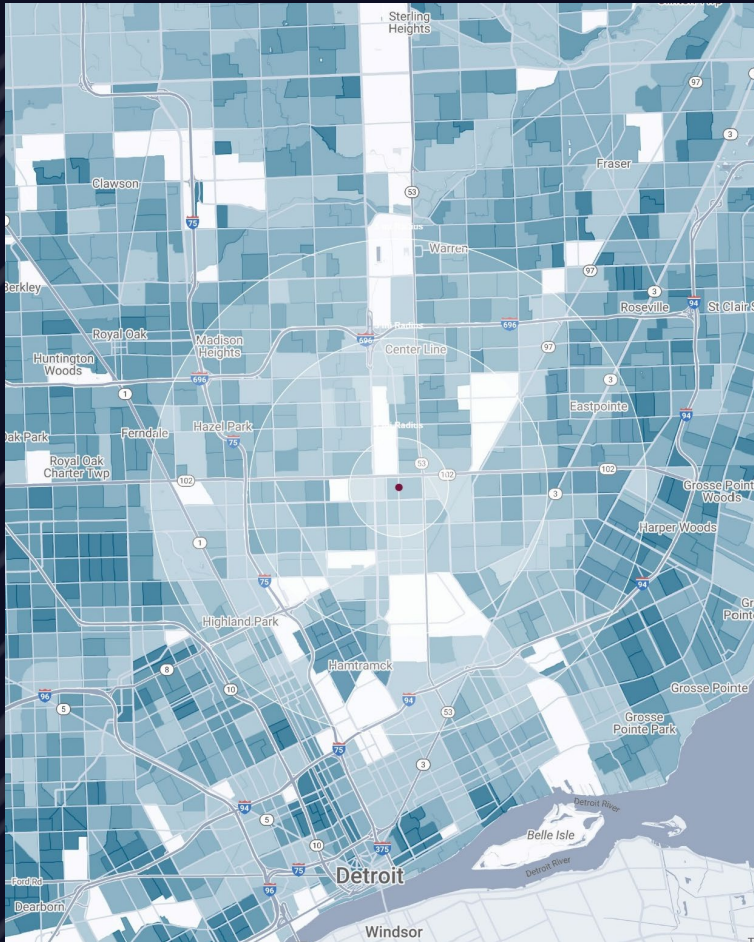


# SITE PHOTOS





# DEMOGRAPHICS



## INDUSTRIAL BUILDING

2018 Sherwood St, Detroit, MI

# DEMOGRAPHICS

<b>POPULATION</b>	<b>1 MILE</b>	<b>3 MILE</b>	<b>5 MILE</b>
2023 Estimated Population	14,712	126,061	345,571
2028 Projected Population	14,320	121,403	332,034
2020 Census Population	14,270	124,593	345,676
2010 Census Population	16,076	137,512	372,927
Projected Annual Growth 2023 to 2028	-0.5%	-0.7%	-0.8%
Historical Annual Growth 2010 to 2023	-0.7%	-0.6%	-0.6%
<b>HOUSEHOLDS</b>			
2023 Estimated Households	5,304	45,894	131,054
2028 Projected Households	5,233	44,491	126,644
2020 Census Households	5,168	45,687	131,248
2010 Census Households	5,716	48,656	137,907
Projected Annual Growth 2023 to 2028	-0.3%	-0.6%	-0.7%
Historical Annual Growth 2010 to 2023	-0.6%	-0.4%	-0.4%
<b>RACE</b>			
2023 Est. White	29.9%	37.7%	44.7%
2023 Est. Black	62.1%	50.4%	44.2%
2023 Est. Asian or Pacific Islander	3.4%	7.5%	6.5%
2023 Est. American Indian or Alaska Native	0.2%	0.2%	0.2%
2023 Est. Other Races	4.4%	4.3%	4.4%
<b>INCOME</b>			
2023 Est. Average Household Income	\$60,764	\$61,233	\$69,279
2023 Est. Median Household Income	\$44,574	\$45,530	\$52,211
2023 Est. Per Capita Income	\$21,954	\$22,363	\$26,360
<b>BUSINESS</b>			
2023 Est. Total Businesses	416	3,602	10,541
2023 Est. Total Employees	7,034	39,246	114,825



## CONTACT US



**LOUIS J.  
CIOTTI**

*Managing Director*

*lciotti@landmarkcres.com*

**248 488 2620**



**ALESSANDRO D.  
BORTOLOTTI**

*Associate*

*abortolotti@landmarkcres.com*

**248 488 2620**

**LANDMARK**  
COMMERCIAL ▲ REAL ESTATE ▲ SERVICES

30500 Northwestern Hwy, Suite 200  
Farmington Hills, MI 48334  
248.488.2620  
[landmarkcres.com](http://landmarkcres.com)

LANDMARK COMMERCIAL REAL ESTATE SERVICES – Licensed Real Estate Brokers. The information above has been obtained from sources believed reliable. While we do not doubt its accuracy, we have not verified it and make no guarantee, warranty or representation about it. It is your responsibility to independently confirm its accuracy and completeness. Any projections, opinions, assumptions or estimates are used for example only and do not represent the current or future performance of the property. The value of this transaction to you depends on tax and other factors which should be evaluated by your tax, financial and legal advisors. You and your advisors should conduct a careful, independent investigation of the property to determine to your satisfaction, the suitability of the property for your needs.