

FOR LEASE  
**KERBY PLACE**

18720 MACK AVE, GROSSE POINTE FARMS, MI 48236



**BUILDING  
SIGNAGE  
AVAILABLE**

**SIGNAGE AVAILABLE**



# PROPERTY DETAILS

\$33.00/SF (Gross)

**RENT**

<b>LOCATION:</b>	18720 Mack Ave, Grosse Pointe Farms, MI 48236
<b>PROPERTY TYPE:</b>	Freestanding
<b>DATE AVAILABLE:</b>	Immediately
<b>RENT:</b>	\$33.00/ SF (Gross) *Includes Utilities & Janitorial
<b>BUILDING SIZE:</b>	15,396 SF
<b>LOT SIZE:</b>	0.7 AC
<b>AVAILABLE SPACE:</b>	1,953 SF
<b>ZONING:</b>	O-1
<b>GROSS LEASABLE AREA:</b>	1,953 SF (Ground Level)
<b>TRAFFIC COUNT:</b>	Mack Ave (17,696 CPD) Kerby Rd (3,571 CPD)



## HIGHLIGHTS

- Kerby Place is Mack Avenue's Premier Office Building
- Highly Visible Freestanding Corner Building Located at the Signalized Intersection of Mack Ave & Kerby Rd.
- Prominent Building Signage Available
- Rare Ample Parking
- High-End Common Areas with Elevator Access
- Professional Management in Place

### EXCLUSIVELY LISTED BY:



**ALESSANDRO D. BORTOLOTTI**

Associate  
[abortolotti@landmarkcres.com](mailto:abortolotti@landmarkcres.com)  
248 488 2620



**ANTHONY J. VITALE**

Director  
[avitale@landmarkcres.com](mailto:avitale@landmarkcres.com)  
248 488 2620

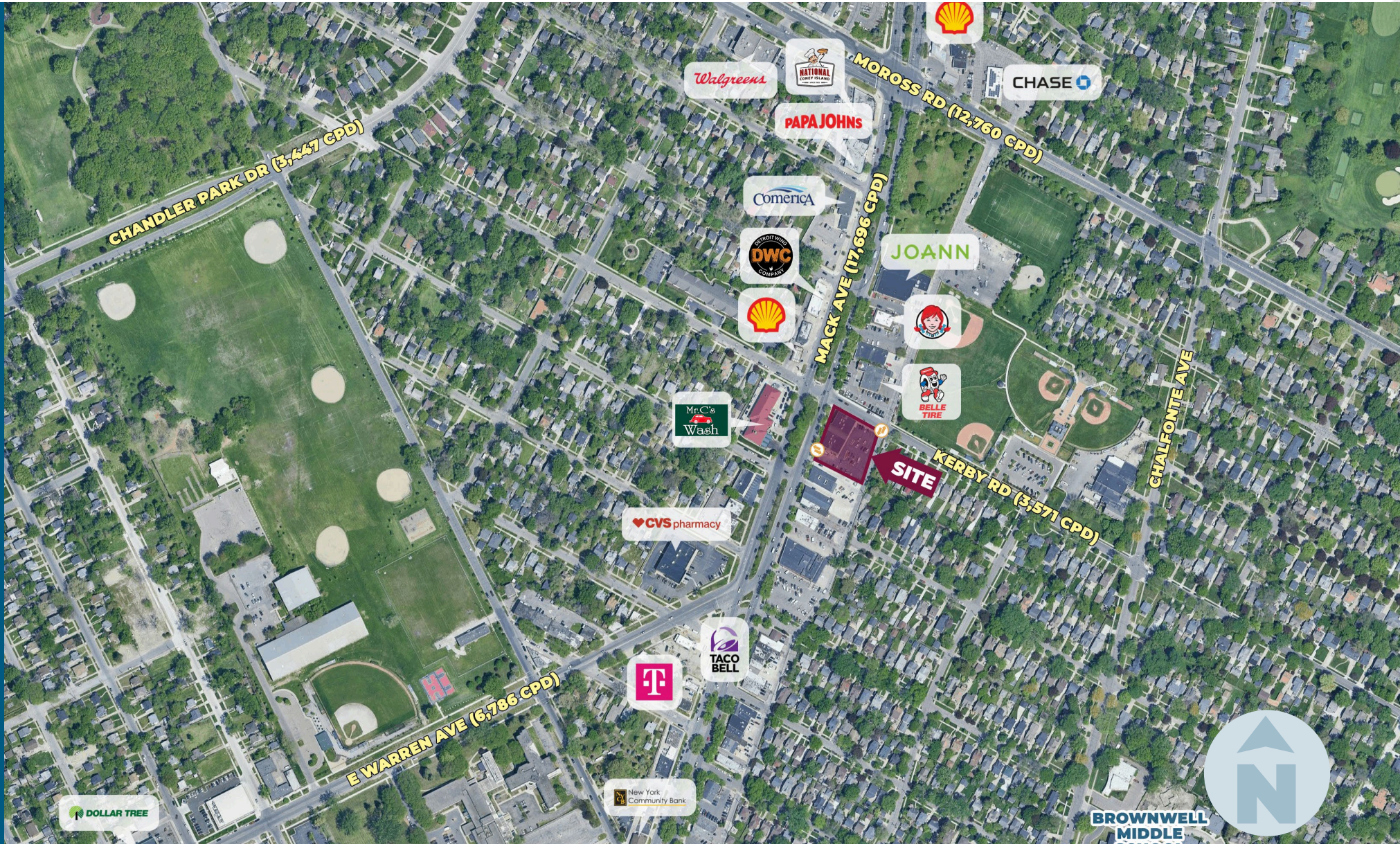


**LOUIS J. CIOTTI**

Managing Director  
[lcotti@landmarkcres.com](mailto:lcotti@landmarkcres.com)  
248 488 2620

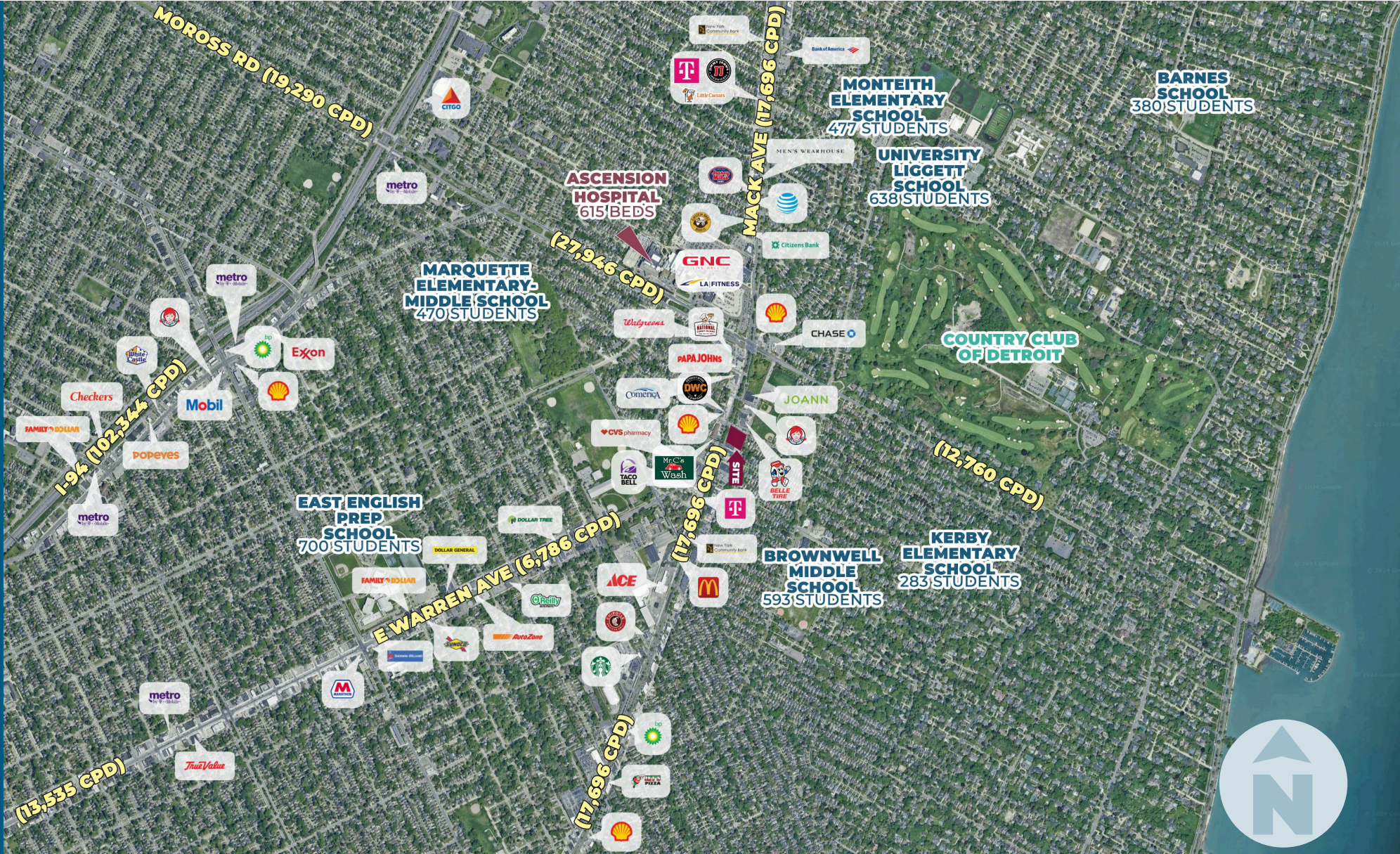


# MICRO AERIAL



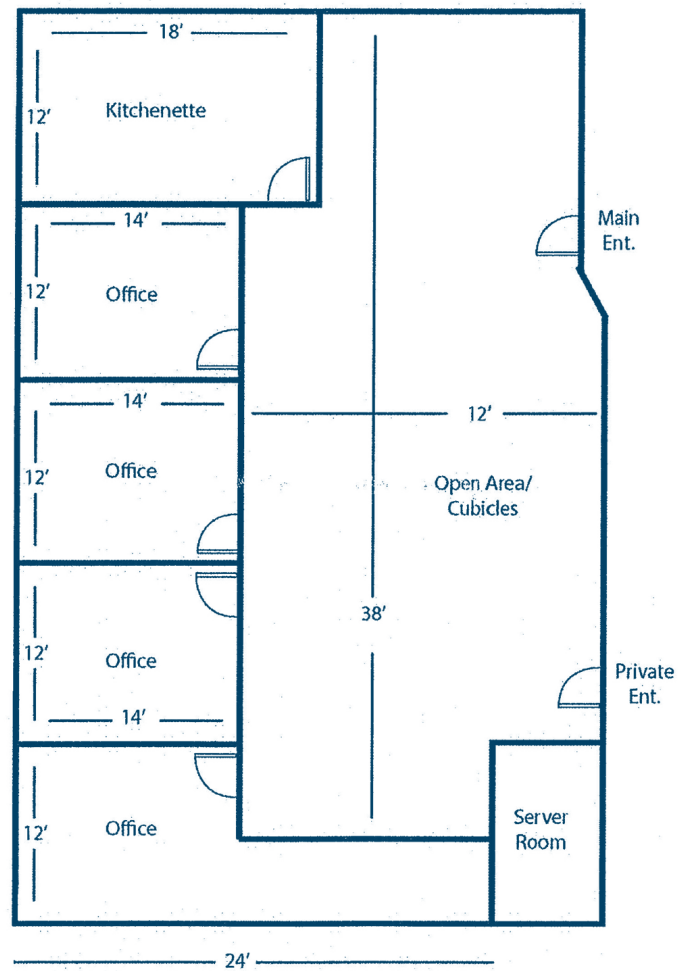


# MACRO AERIAL





# FLOOR PLAN



# SITE PHOTOS





# SITE PHOTOS

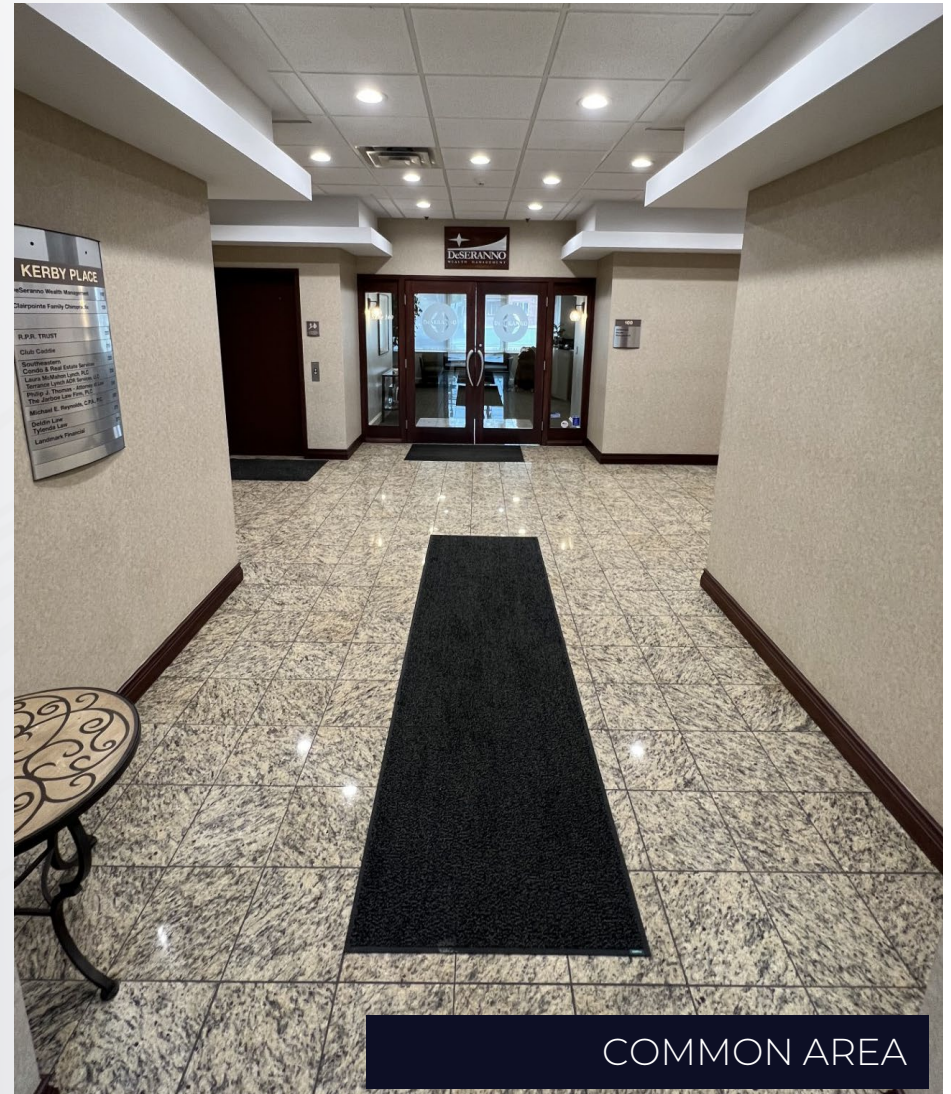




# SITE PHOTOS



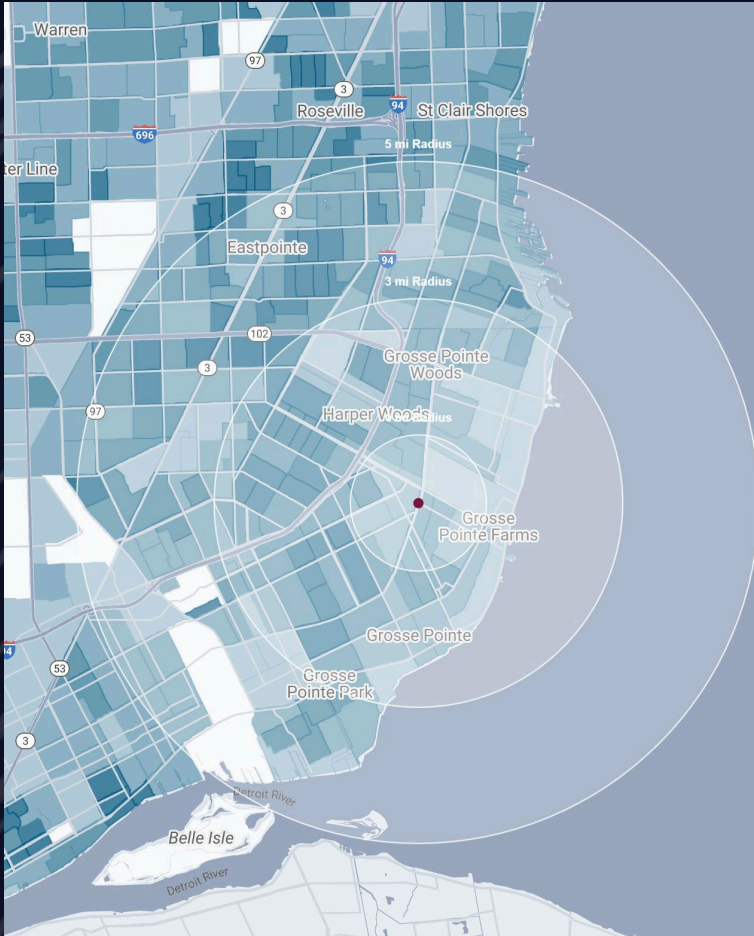
SIGNAGE



COMMON AREA



# DEMOGRAPHICS



## KERBY PLACE

18720 Mack Ave, Grosse Pointe Farms, MI 48236

# DEMOGRAPHICS

### POPULATION

	1 MILE	3 MILE	5 MILE
2023 Estimated Population	14,645	115,781	235,755
2028 Projected Population	14,165	112,260	231,525
2020 Census Population	15,139	117,694	235,429
2010 Census Population	14,878	122,898	254,665
Projected Annual Growth 2023 to 2028	-0.7%	-0.6%	-0.4%
Historical Annual Growth 2010 to 2023	-0.1%	-0.4%	-0.5%

### HOUSEHOLDS

2023 Estimated Households	5,714	44,863	92,853
2028 Projected Households	5,539	43,638	91,631
2020 Census Households	5,841	44,693	90,225
2010 Census Households	5,779	45,873	95,186
Projected Annual Growth 2023 to 2028	-0.6%	-0.5%	-0.3%
Historical Annual Growth 2010 to 2023	-	-0.2%	-0.2%

### RACE

2023 Est. White	47.1%	50.2%	59.6%
2023 Est. Black	43.6%	40.5%	30.1%
2023 Est. Asian or Pacific Islander	2.2%	2.2%	3.3%
2023 Est. American Indian or Alaska Native	0.3%	0.3%	0.3%
2023 Est. Other Races	6.8%	6.8%	6.6%

### INCOME

2023 Est. Average Household Income	\$146,400	\$124,660	\$99,418
2023 Est. Median Household Income	\$103,732	\$87,301	\$72,093
2023 Est. Per Capita Income	\$57,315	\$48,396	\$39,256

### BUSINESS

2023 Est. Total Businesses	656	3,729	7,408
2023 Est. Total Employees	4,579	26,008	54,640



## CONTACT US



**ALESSANDRO D.  
BORTOLOTTI**

*Associate*

*abortolotti@landmarkcres.com*

**248 488 2620**



**ANTHONY J.  
VITALE**

*Director*

*avitale@landmarkcres.com*

**248 488 2620**



**LOUIS J.  
CIOTTI**

*Managing Director*

*lciotti@landmarkcres.com*

**248 488 2620**

**LANDMARK**  
COMMERCIAL ▲ REAL ESTATE ▲ SERVICES

30500 Northwestern Hwy, Suite 200  
Farmington Hills, MI 48334  
248.488.2620  
[landmarkcres.com](http://landmarkcres.com)

LANDMARK COMMERCIAL REAL ESTATE SERVICES – Licensed Real Estate Brokers. The information above has been obtained from sources believed reliable. While we do not doubt its accuracy, we have not verified it and make no guarantee, warranty or representation about it. It is your responsibility to independently confirm its accuracy and completeness. Any projections, opinions, assumptions or estimates are used for example only and do not represent the current or future performance of the property. The value of this transaction to you depends on tax and other factors which should be evaluated by your tax, financial and legal advisors. You and your advisors should conduct a careful, independent investigation of the property to determine to your satisfaction, the suitability of the property for your needs.