

FOR LEASE

# EUREKA- RACHO PLAZA

22010-22040 EUREKA RD, TAYLOR, MI 48180

1,800 SF  
AVAILABLE



# PROPERTY DETAILS

\$28.00/SF NNN

\$6.00 - \$7.00/SF EST.

**RENT**

**NNN**

**LOCATION:** 22010-22040 Eureka Rd,  
Taylor, MI 48180

**PROPERTY TYPE:** Shopping Center

**DATE AVAILABLE:** Immediately

**RENT:** \$28.00/SF NNN

**NNN EXPENSE:** \$6.00 - \$7.00/ SF Est.

**PROPERTY TAXES:** \$30,657.00

**BUILDING SIZE:** 9,105 SF

**LOT SIZE:** 1.33 AC

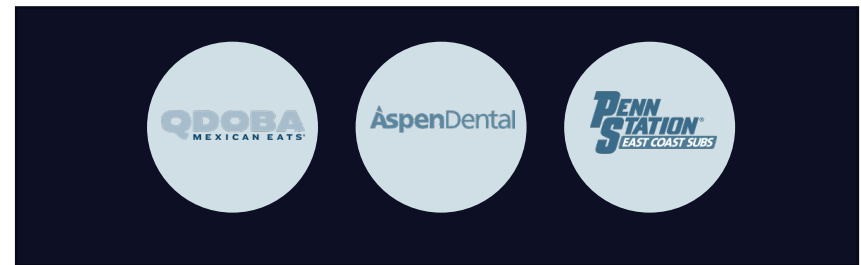
**LOT DIMENSIONS:** ±250' X ±230'

**AVAILABLE SPACE:** 1,800 SF

**ZONING:** B-2

**TRAFFIC COUNT:** Eureka Rd (22,024 CPD)  
Racho Blvd (8,198 CPD)

## TENANT ROSTER



## HIGHLIGHTS

- 1,800 SF Retail Space Available
  - Last Remaining Vacancy in Center
- Located at the Signalized Intersection of Eureka Rd & Racho Blvd (NW Corner)
- Synergize with other Tenants in this Center such as **Qdoba**, **Aspen Dental**, and **Penn Station**
- Adjacent to Southland Mall and Steps Away from the New Chick-Fil-A on Eureka Rd

### EXCLUSIVELY LISTED BY:



**LOUIS J. CIOTTI**  
Managing Director  
[lciotti@landmarkcres.com](mailto:lciotti@landmarkcres.com)  
248 488 2620



**ALESSANDRO D. BORTOLOTTI**  
Associate  
[abortolotti@landmarkcres.com](mailto:abortolotti@landmarkcres.com)  
248 488 2620



# MICRO AERIAL



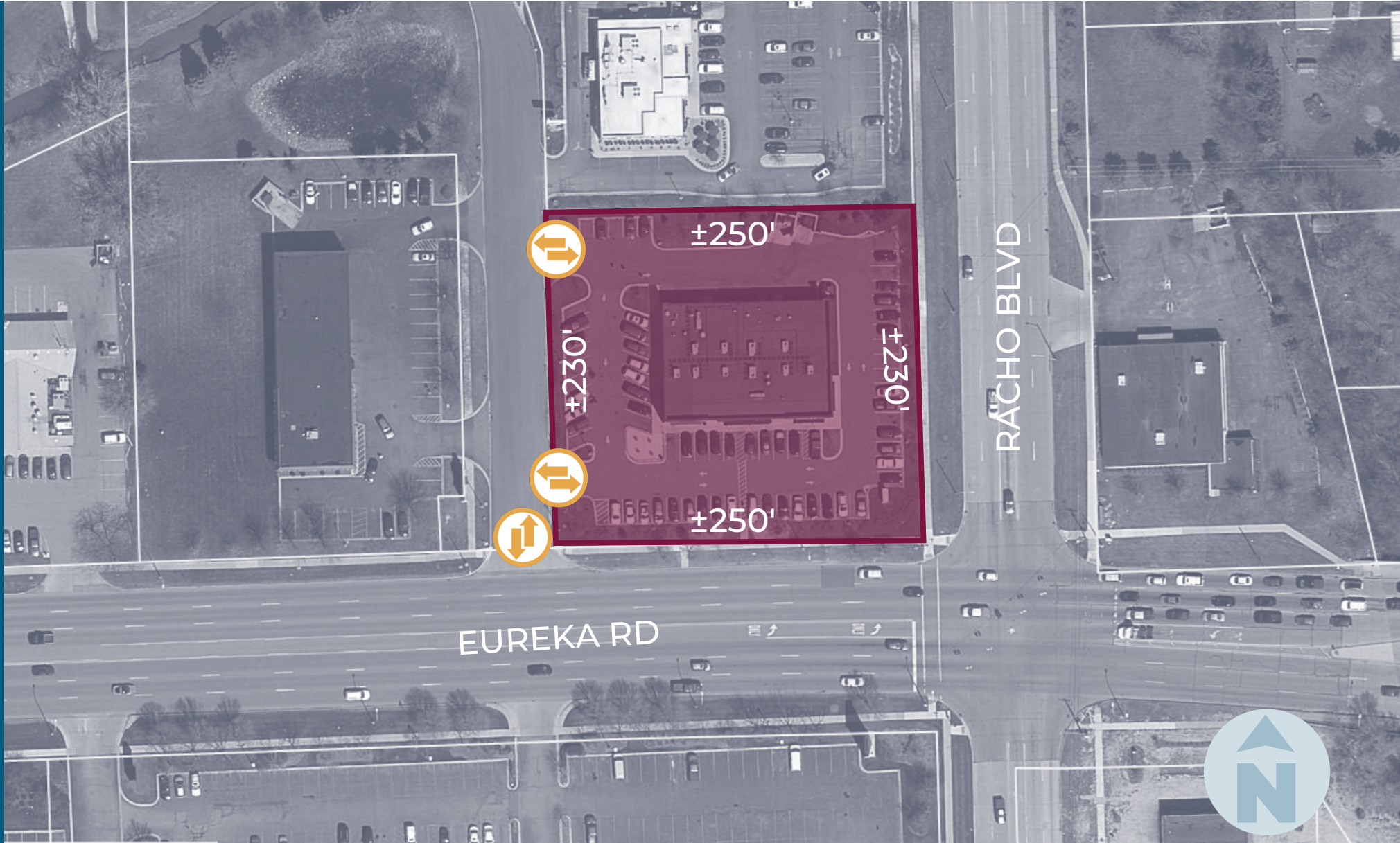


# MACRO AERIAL



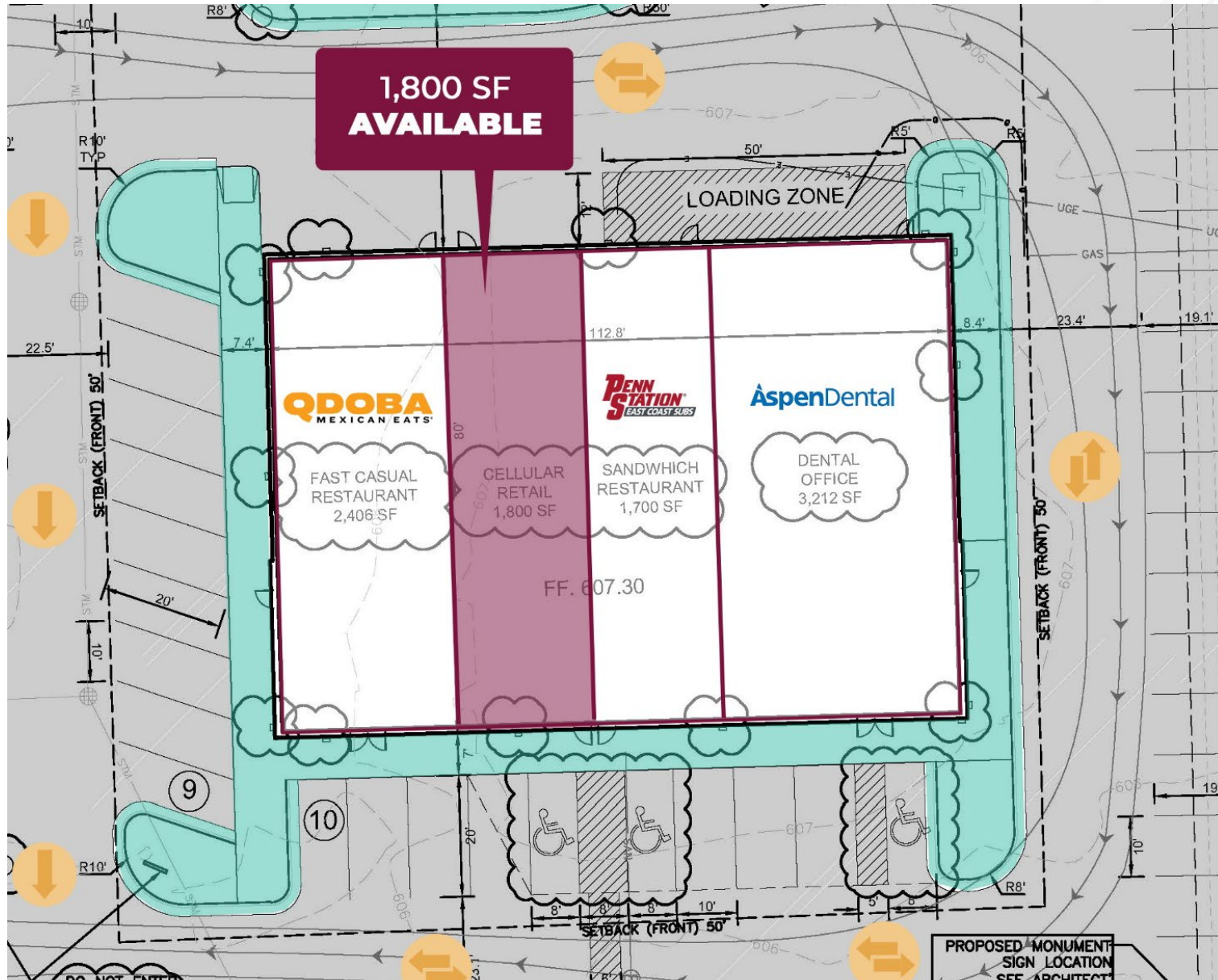


# PLAT

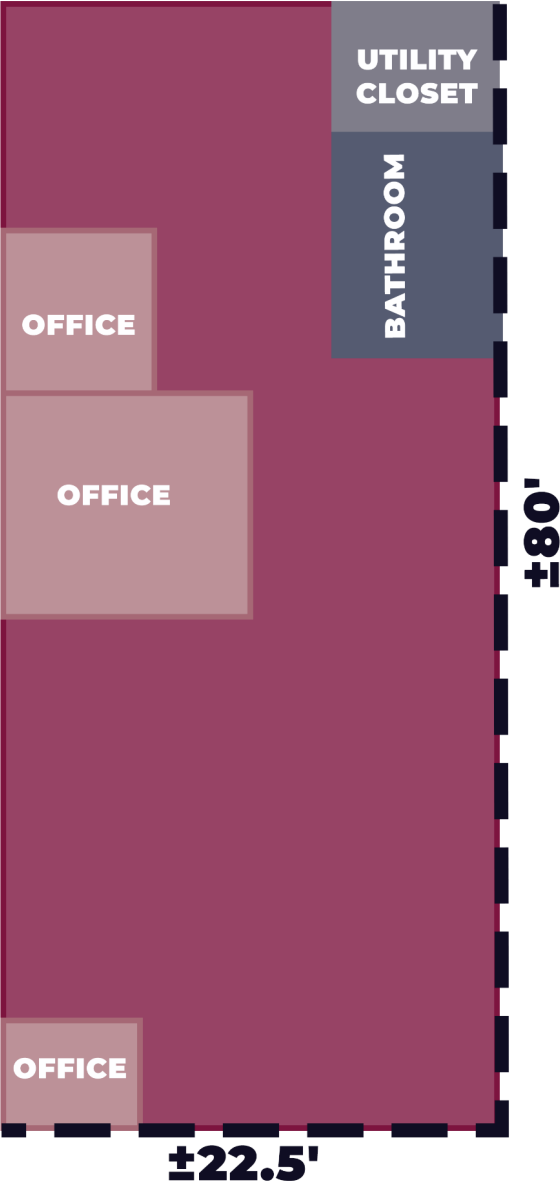




# PLANS



# SPACE SKETCH





# SIGNAGE





# DEMOGRAPHICS



## EUREKA- RACHO PLAZA

22010-22040 Eureka Rd, Taylor, MI 48180

# DEMOGRAPHICS

<b>POPULATION</b>	<b>1 MILE</b>	<b>3 MILE</b>	<b>5 MILE</b>
2024 Estimated Population	3,638	66,039	202,637
2029 Projected Population	3,524	64,034	196,920
2020 Census Population	3,788	69,848	217,359
2010 Census Population	3,594	68,667	213,973
Projected Annual Growth 2024 to 2029	-0.6%	-0.6%	-0.6%
Historical Annual Growth 2010 to 2024	-	-0.3%	-0.4%
<b>HOUSEHOLDS</b>			
2024 Estimated Households	1,746	28,138	86,008
2029 Projected Households	1,693	27,360	83,871
2020 Census Households	1,762	29,154	89,651
2010 Census Households	1,600	27,626	85,993
Projected Annual Growth 2024 to 2029	-0.6%	-0.6%	-0.5%
Historical Annual Growth 2010 to 2024	0.7%	0.1%	-
<b>RACE</b>			
2024 Est. White	59.5%	67.0%	74.9%
2024 Est. Black	25.5%	20.2%	13.1%
2024 Est. Asian or Pacific Islander	6.7%	4.3%	2.5%
2024 Est. American Indian or Alaska Native	0.3%	0.4%	0.4%
2024 Est. Other Races	7.9%	8.1%	9.1%
<b>INCOME</b>			
2024 Est. Average Household Income	\$82,664	\$88,014	\$93,616
2024 Est. Median Household Income	\$74,558	\$66,774	\$72,021
2024 Est. Per Capita Income	\$39,861	\$37,665	\$39,820
<b>BUSINESS</b>			
2024 Est. Total Businesses	337	2,284	6,208
2024 Est. Total Employees	4,046	34,204	72,395



## CONTACT US



**LOUIS J.  
CIOTTI**

*Managing Director*

*lciotti@landmarkcres.com*

**248 488 2620**



**ALESSANDRO D.  
BORTOLOTTI**

*Associate*

*abortolotti@landmarkcres.com*

**248 488 2620**

**LANDMARK**  
COMMERCIAL ▲ REAL ESTATE ▲ SERVICES

30500 Northwestern Hwy, Suite 200  
Farmington Hills, MI 48334  
248.488.2620  
[landmarkcres.com](http://landmarkcres.com)

LANDMARK COMMERCIAL REAL ESTATE SERVICES – Licensed Real Estate Brokers. The information above has been obtained from sources believed reliable. While we do not doubt its accuracy, we have not verified it and make no guarantee, warranty or representation about it. It is your responsibility to independently confirm its accuracy and completeness. Any projections, opinions, assumptions or estimates are used for example only and do not represent the current or future performance of the property. The value of this transaction to you depends on tax and other factors which should be evaluated by your tax, financial and legal advisors. You and your advisors should conduct a careful, independent investigation of the property to determine to your satisfaction, the suitability of the property for your needs.