

FOR SALE
FREESTANDING BUILDING
15975 EUREKA RD, SOUTHGATE, MI 48195



PROPERTY DETAILS

2,167 SF

\$395,000.00

BLDG SIZE

SALES PRICE

LOCATION:	15975 Eureka Rd, Southgate, MI 48195
PROPERTY TYPE:	Freestanding
DATE AVAILABLE:	Immediately
SALES PRICE:	\$395,000.00
PROPERTY TAXES:	\$7,858.50
BUILDING SIZE:	2,167 SF
LOT SIZE:	0.46 AC
LOT DIMENSIONS:	±98.5' X ±132.3'
AVAILABLE SPACE:	2,167 SF
ZONING:	C-1
TRAFFIC COUNT:	Eureka Rd (23,058 CPD) Dix-Toledo Rd (8,550 CPD)

HIGHLIGHTS

- Stand alone building sitting on 0.46 acres on heavily traveled Eureka Road
- 2,167 square-feet available with 12' ceilings
- Building was renovated in 2021, and the parking lot can accommodate over 20+ cars
- C-1 zoning allows for a variety of retail, office, and medical uses
- Former salon space

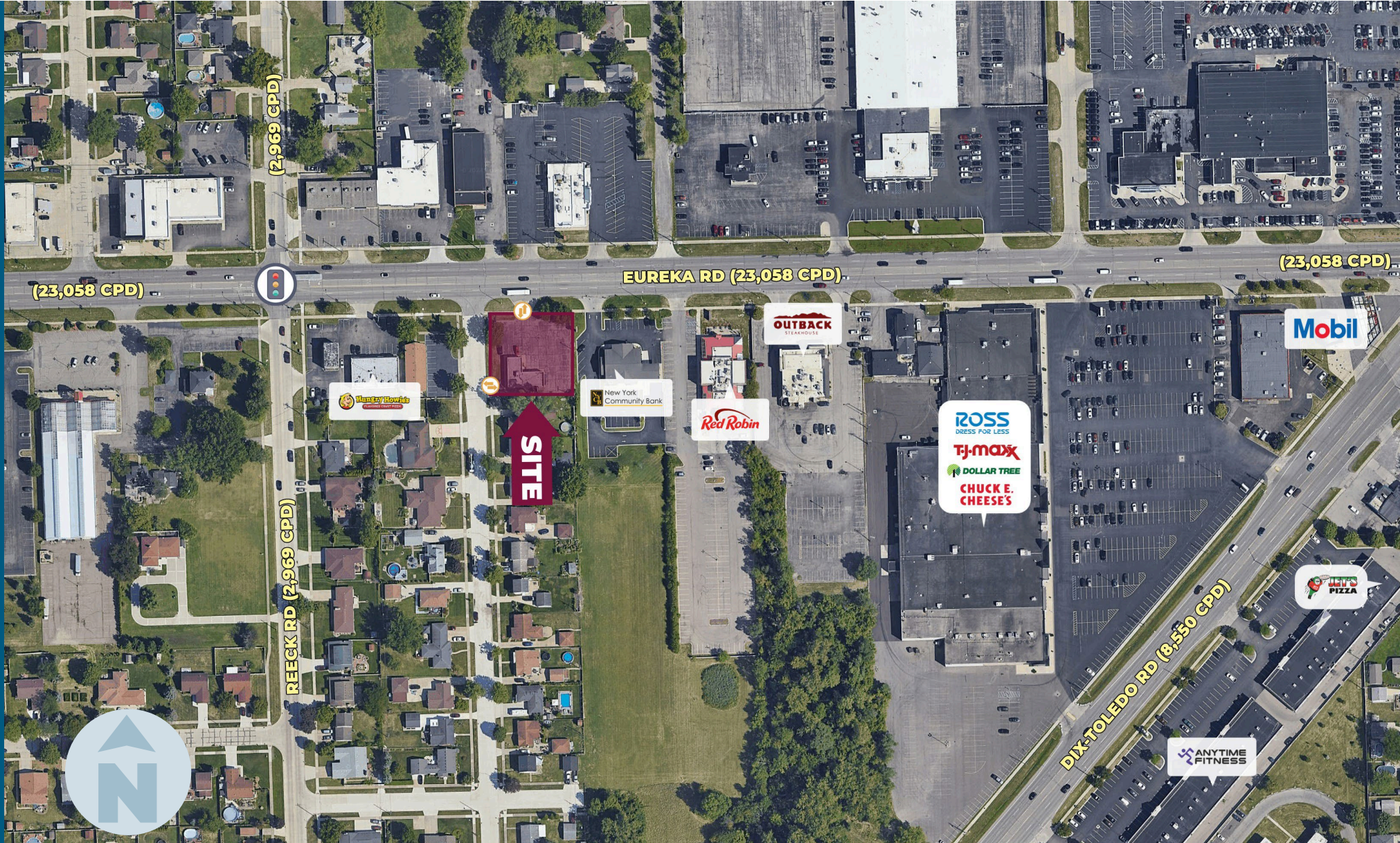
EXCLUSIVELY LISTED BY:



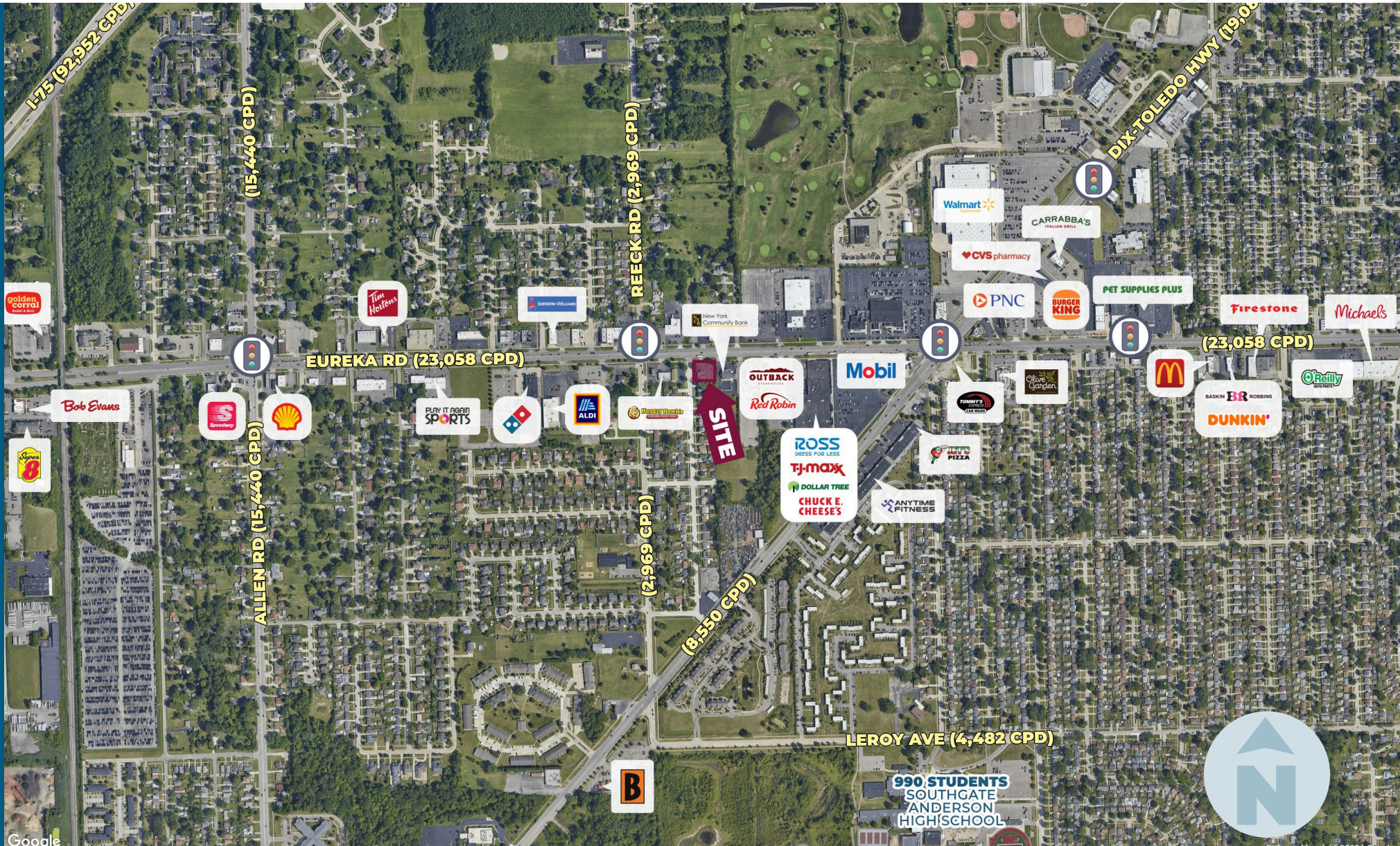
**LOUIS J.
CIOTTI**

Managing Director
lcotti@landmarkres.com
248 488 2620

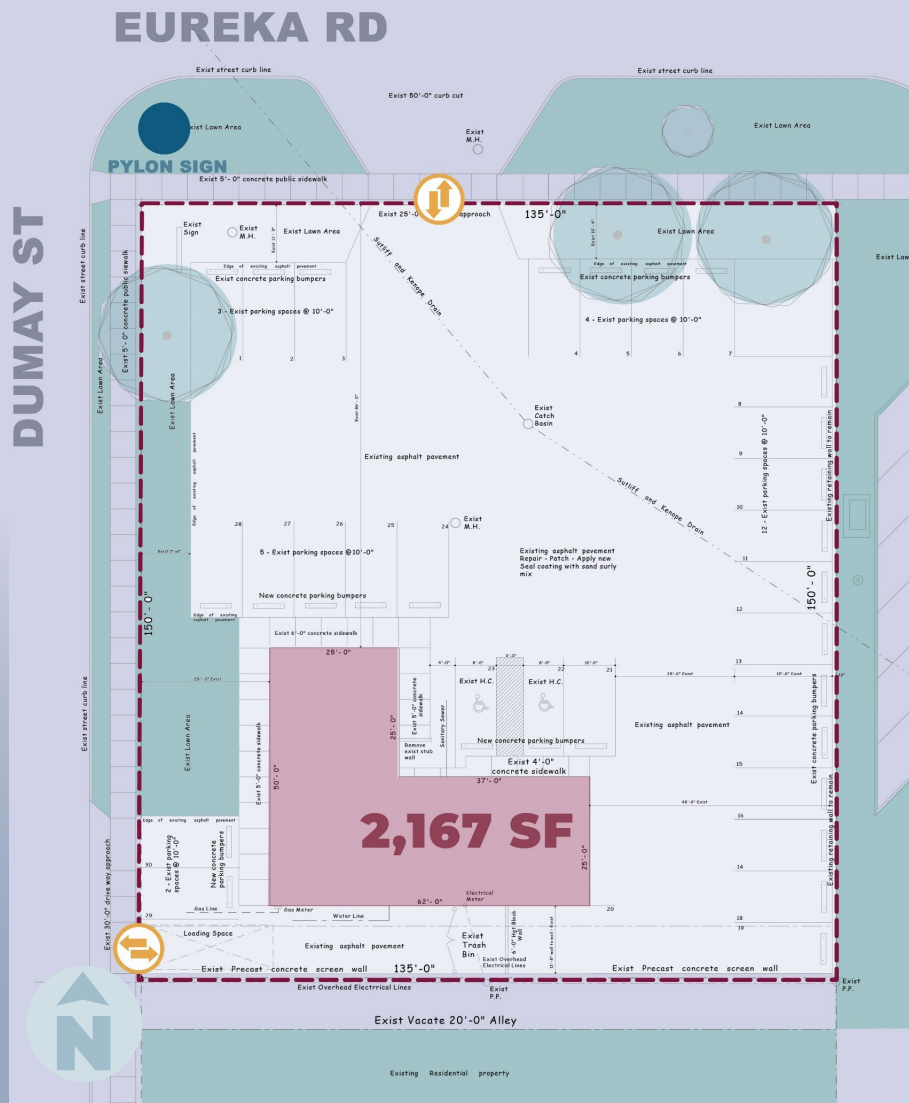
MICRO AERIAL



MACRO AERIAL



SITE PLAN



PYLON SIGN

FLOOR PLAN



INTERIOR PHOTOS



PLAT



DEMOGRAPHICS



FREESTANDING BUILDING

15975 Eureka RD, Southgate, MI 48195

DEMOGRAPHICS

POPULATION

	1 MILE	3 MILE	5 MILE
2024 Estimated Population	10,313	84,740	220,309
2029 Projected Population	9,906	82,227	213,832
2020 Census Population	11,270	89,948	235,199
2010 Census Population	11,259	89,241	232,028
Projected Annual Growth 2024 to 2029	-0.8%	-0.6%	-0.6%
Historical Annual Growth 2010 to 2024	-0.6%	-0.4%	-0.4%

HOUSEHOLDS

2024 Estimated Households	4,724	37,171	94,095
2029 Projected Households	4,553	36,183	91,651
2020 Census Households	4,957	38,609	97,909
2010 Census Households	4,819	37,107	94,150
Projected Annual Growth 2024 to 2029	-0.7%	-0.5%	-0.5%
Historical Annual Growth 2010 to 2024	-0.1%	-	-

RACE

2024 Est. White	77.1%	77.3%	74.5%
2024 Est. Black	10.5%	10.9%	12.5%
2024 Est. Asian or Pacific Islander	3.4%	2.7%	2.3%
2024 Est. American Indian or Alaska Native	0.5%	0.4%	0.4%
2024 Est. Other Races	8.5%	8.7%	10.2%

INCOME

2024 Est. Average Household Income	\$91,947	\$89,825	\$92,538
2024 Est. Median Household Income	\$72,268	\$70,827	\$70,421
2024 Est. Per Capita Income	\$42,326	\$39,546	\$39,609

BUSINESS

2024 Est. Total Businesses	408	2,703	6,435
2024 Est. Total Employees	7,235	31,299	72,504

CONTACT US



**LOUIS J.
CIOTTI**

Managing Director

lciotti@landmarkcres.com

248 488 2620

LANDMARK
COMMERCIAL ▲ REAL ESTATE ▲ SERVICES

30500 Northwestern Hwy, Suite 200
Farmington Hills, MI 48334
248.488.2620
landmarkcres.com

LANDMARK COMMERCIAL REAL ESTATE SERVICES – Licensed Real Estate Brokers. The information above has been obtained from sources believed reliable. While we do not doubt its accuracy, we have not verified it and make no guarantee, warranty or representation about it. It is your responsibility to independently confirm its accuracy and completeness. Any projections, opinions, assumptions or estimates are used for example only and do not represent the current or future performance of the property. The value of this transaction to you depends on tax and other factors which should be evaluated by your tax, financial and legal advisors. You and your advisors should conduct a careful, independent investigation of the property to determine to your satisfaction, the suitability of the property for your needs.