

FOR LEASE

FREESTANDING RETAIL

20481 MACK AVE, GROSSE POINTE WOODS, MI 48236

**2,750 SF
AVAILABLE**



PROPERTY DETAILS

CONTACT BROKER

ABSOLUTE NET

RENT

NNN

LOCATION:	20481 Mack Ave, Grosse Pointe Woods, MI 48236
PROPERTY TYPE:	Freestanding
DATE AVAILABLE:	Immediately
RENT:	Contact Broker
NNN EXPENSE:	Absolute Net
PROPERTY TAXES:	\$10,975.00
BUILDING SIZE:	2,750 SF
LOT SIZE:	0.129 AC
ZONING:	Commercial
TRAFFIC COUNT:	Mack Ave (25,272 CPD) Vernier Rd (23,504 CPD)

HIGHLIGHTS

- Highly visible freestanding building located in the heart of Grosse Pointe Woods, MI.
- Front Customer Entrance on Mack Ave with metered parking.
- 2nd Customer Entrance in rear, 40' by 60' parking for 6 to 8 cars in rear, 8" reinforced concrete surface.
- First time on the market in many years.

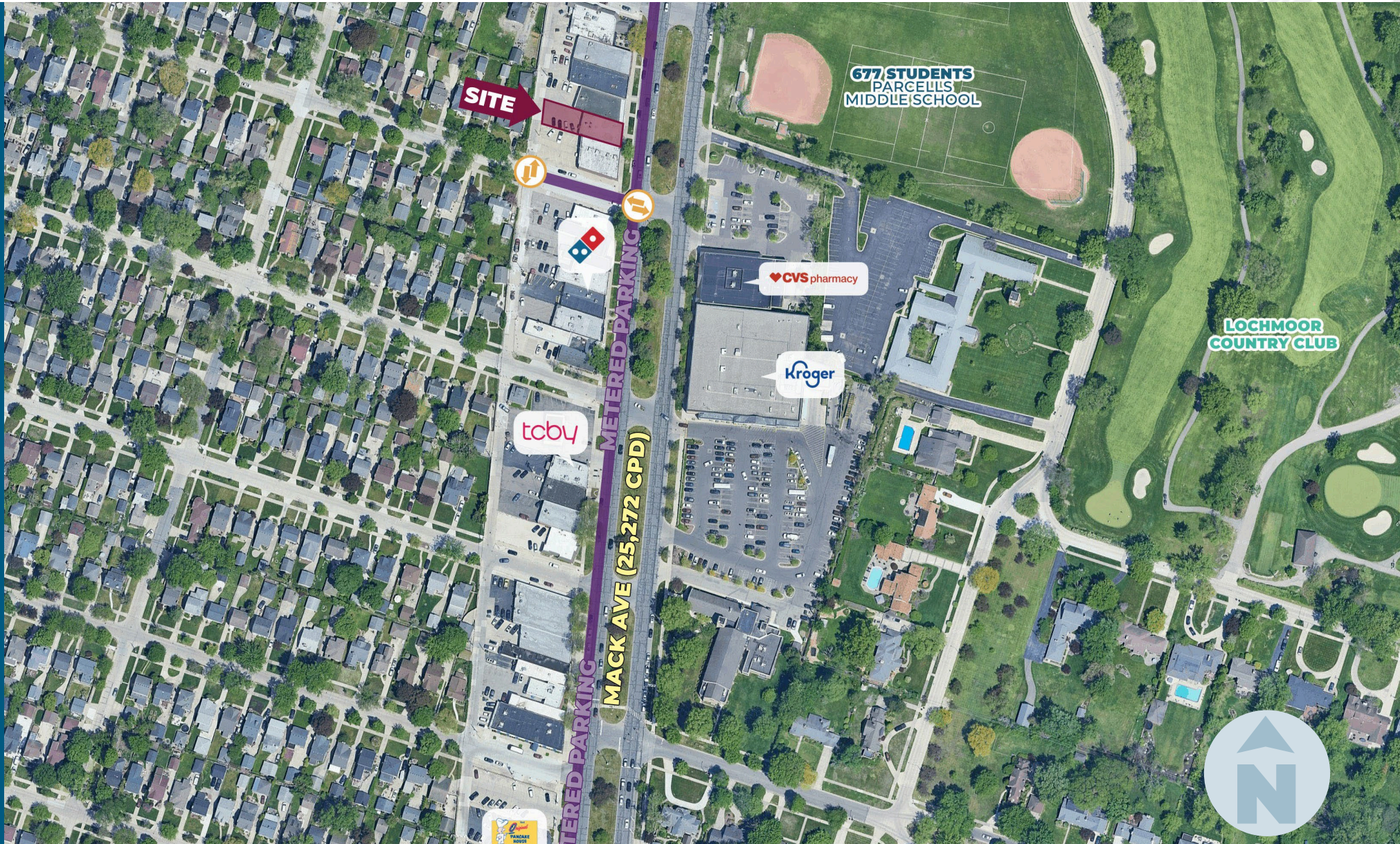
EXCLUSIVELY LISTED BY:



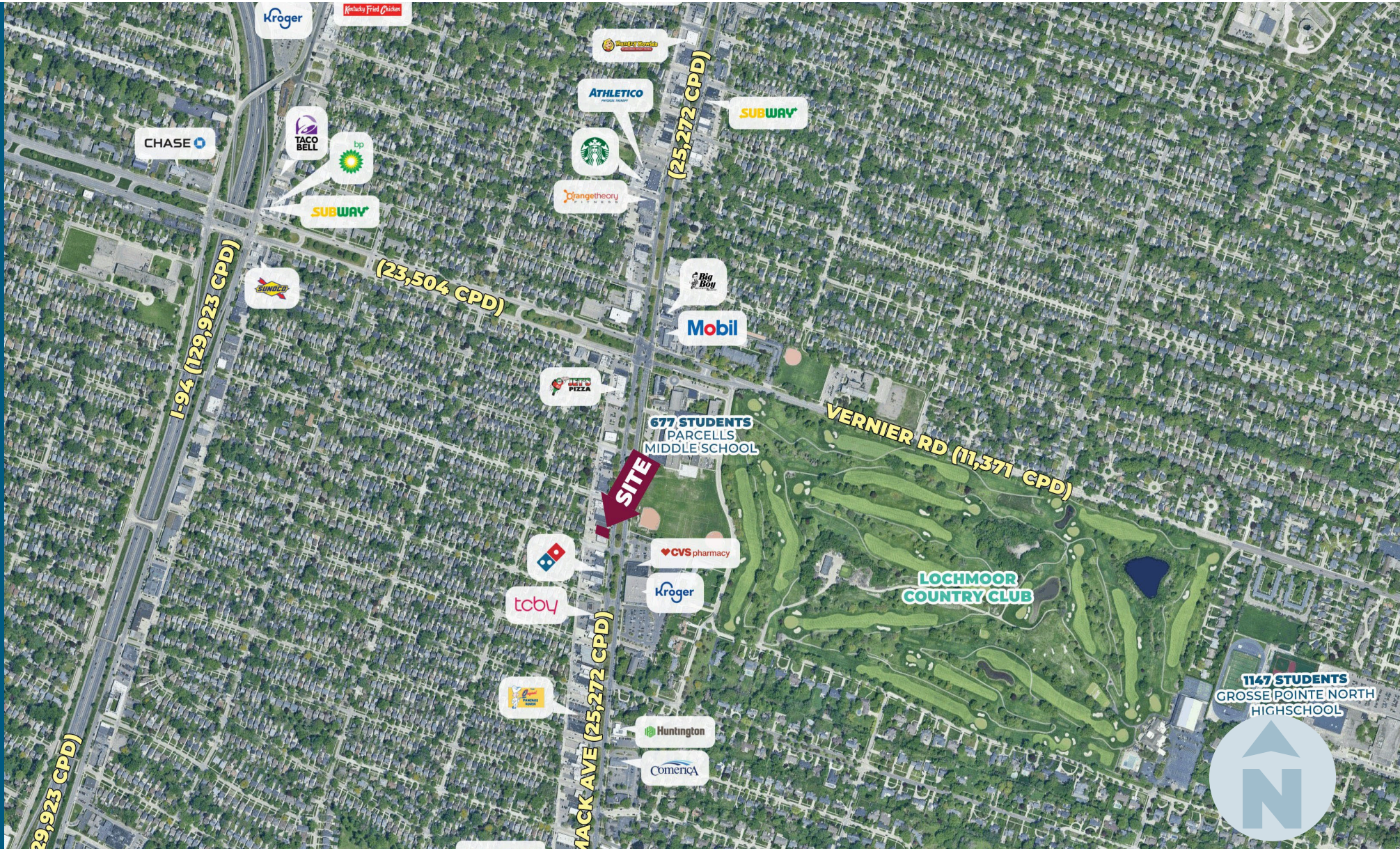
**ANTHONY J.
VITALE**

Director
avitale@landmarkcres.com
248 488 2620

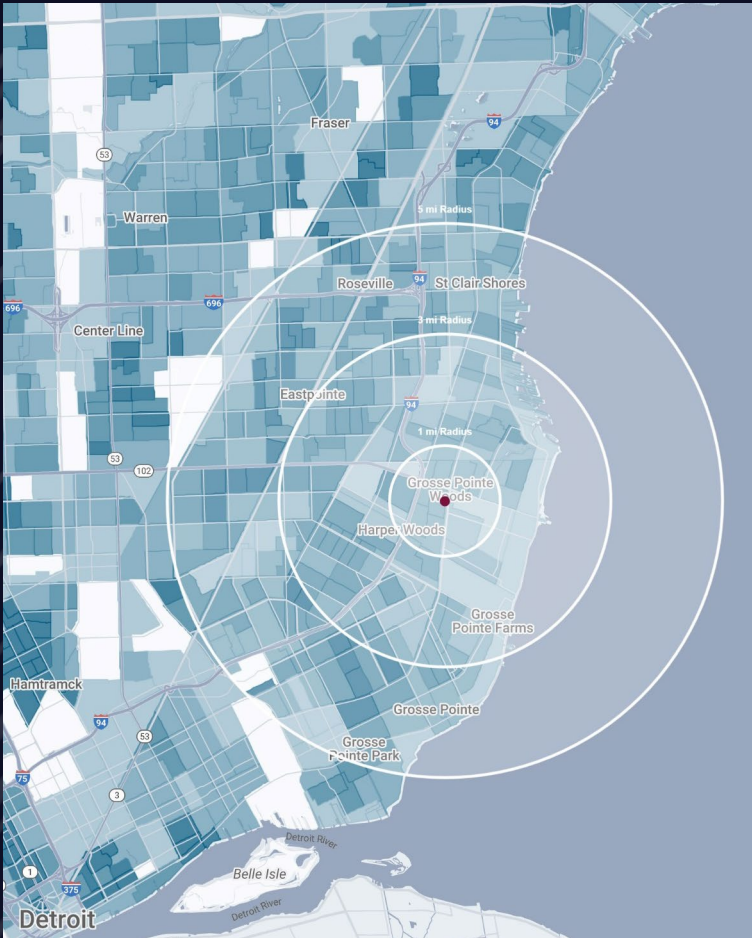
MICRO AERIAL



MACRO AERIAL



DEMOGRAPHICS



FREESTANDING RETAIL

20481 Mack Ave, Grosse Pointe Woods, MI 48236

DEMOGRAPHICS

POPULATION	1 MILE	3 MILE	5 MILE
2024 Estimated Population	16,500	126,734	270,416
2029 Projected Population	15,731	123,740	266,088
2020 Census Population	17,601	129,409	270,677
2010 Census Population	17,065	129,896	285,721
Projected Annual Growth 2024 to 2029	-0.9%	-0.5%	-0.3%
Historical Annual Growth 2010 to 2024	-0.2%	-0.2%	-0.4%
HOUSEHOLDS			
2024 Estimated Households	6,856	50,954	107,576
2029 Projected Households	6,571	50,065	106,476
2020 Census Households	7,184	51,238	105,263
2010 Census Households	6,992	50,846	108,400
Projected Annual Growth 2024 to 2029	-0.8%	-0.3%	-0.2%
Historical Annual Growth 2010 to 2024	-0.1%	-	-
RACE			
2024 Est. White	69.6%	49.5%	48.8%
2024 Est. Black	24.0%	45.3%	45.6%
2024 Est. Asian or Pacific Islander	2.1%	1.4%	1.6%
2024 Est. American Indian or Alaska Native	0.1%	0.1%	0.2%
2024 Est. Other Races	4.2%	3.7%	3.9%
INCOME			
2024 Est. Average Household Income	\$128,633	\$101,490	\$95,018
2024 Est. Median Household Income	\$103,031	\$78,682	\$72,853
2024 Est. Per Capita Income	\$53,567	\$40,887	\$37,877
BUSINESS			
2024 Est. Total Businesses	622	3,991	8,175
2024 Est. Total Employees	4,971	28,179	61,352

CONTACT US



**ANTHONY J.
VITALE**

Director

avitale@landmarkcres.com

248 488 2620

LANDMARK
COMMERCIAL ▲ REAL ESTATE ▲ SERVICES

30500 Northwestern Hwy, Suite 200
Farmington Hills, MI 48334
248.488.2620
landmarkcres.com

LANDMARK COMMERCIAL REAL ESTATE SERVICES – Licensed Real Estate Brokers. The information above has been obtained from sources believed reliable. While we do not doubt its accuracy, we have not verified it and make no guarantee, warranty or representation about it. It is your responsibility to independently confirm its accuracy and completeness. Any projections, opinions, assumptions or estimates are used for example only and do not represent the current or future performance of the property. The value of this transaction to you depends on tax and other factors which should be evaluated by your tax, financial and legal advisors. You and your advisors should conduct a careful, independent investigation of the property to determine to your satisfaction, the suitability of the property for your needs.