

FOR LEASE HIGHLAND LAKES SHOPPING CENTER

42925-43291 7 MILE RD, NORTHVILLE, MI 48167



PROPERTY DETAILS

LOCATION: 42925-43291 7 Mile Rd,
Northville, MI 48167

PROPERTY TYPE: Shopping Center

RENT: Contact Broker

NNN EXPENSE: \$5.00/SF

AVAILABLE SPACE: 1,880 SF
2,400 SF
2,550 SF
5,000 SF
11,000 SF
20,000-30,000 SF

TRAFFIC COUNT: 7 Mile Rd (14,312 CPD)
S Main St (8,064 CPD)

EXCLUSIVELY LISTED BY:



ANDREW C. LUCKOFF
Director
aluckoff@landmarkcres.com
248 488 2620



ANTHONY J. VITALE
Director
avitale@landmarkcres.com
248 488 2620

Contact Broker

\$5.00/SF

RENT

NNN

TENANT ROSTER



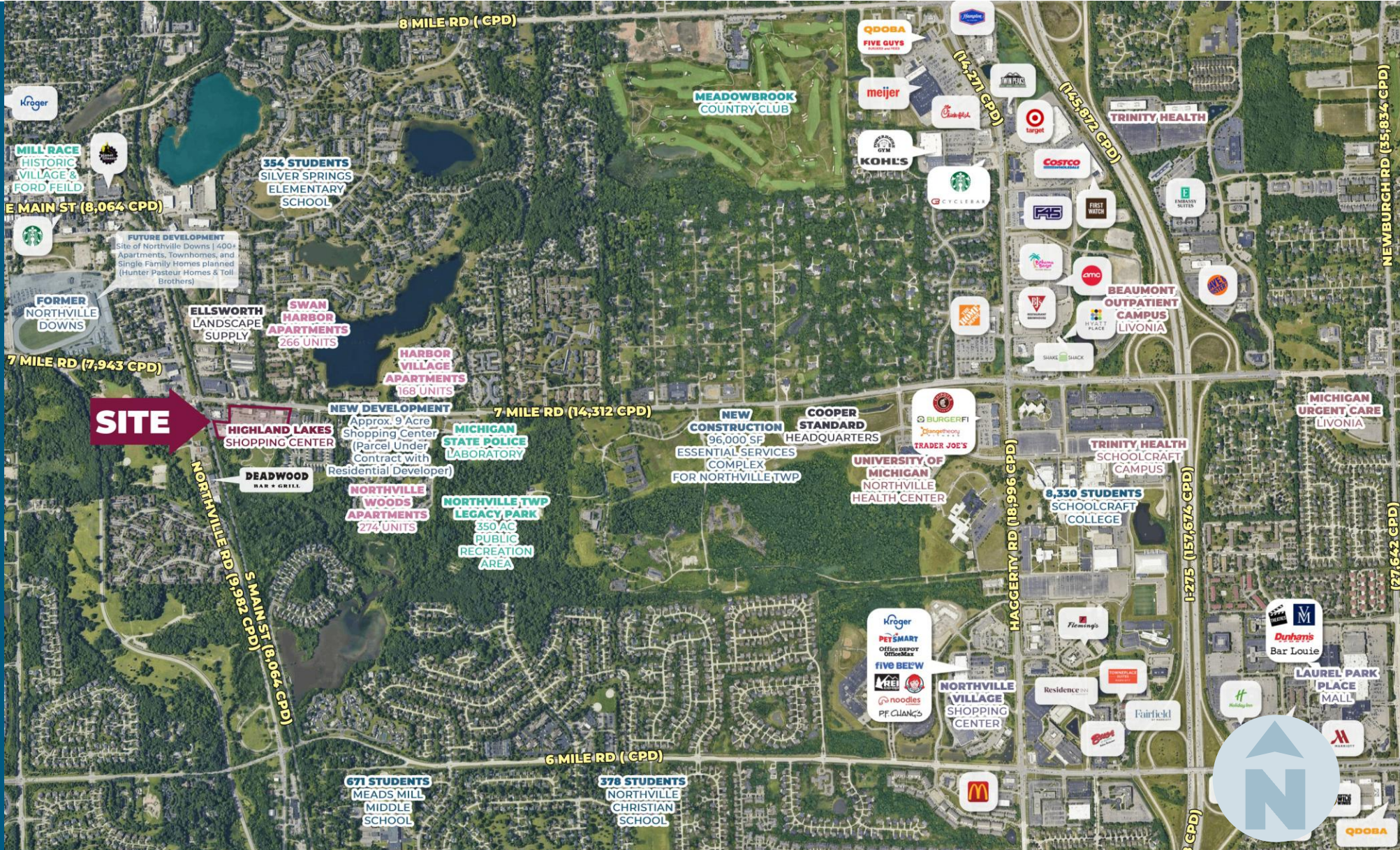
HIGHLIGHTS

- Excellent Location in one of SE Michigan's Highest-Income and most Desirable Submarkets
- Situated between the Upscale Downtown Northville and the Major Freeway Artery, I-275
- Walking Distance from the New and Exciting 400+ Luxury Housing Site of the Former Northville Downs Racetrack.
- 1,880 SF Inline Space Located in the Primary Shopping Center
- Seeking grocery anchor in 20,000-30,000 SF
- 3 Outbuildings
 - 2,400 SF Freestanding Building Available
 - 2,550 SF End Cap Available Consisting of Turnkey Medical Space

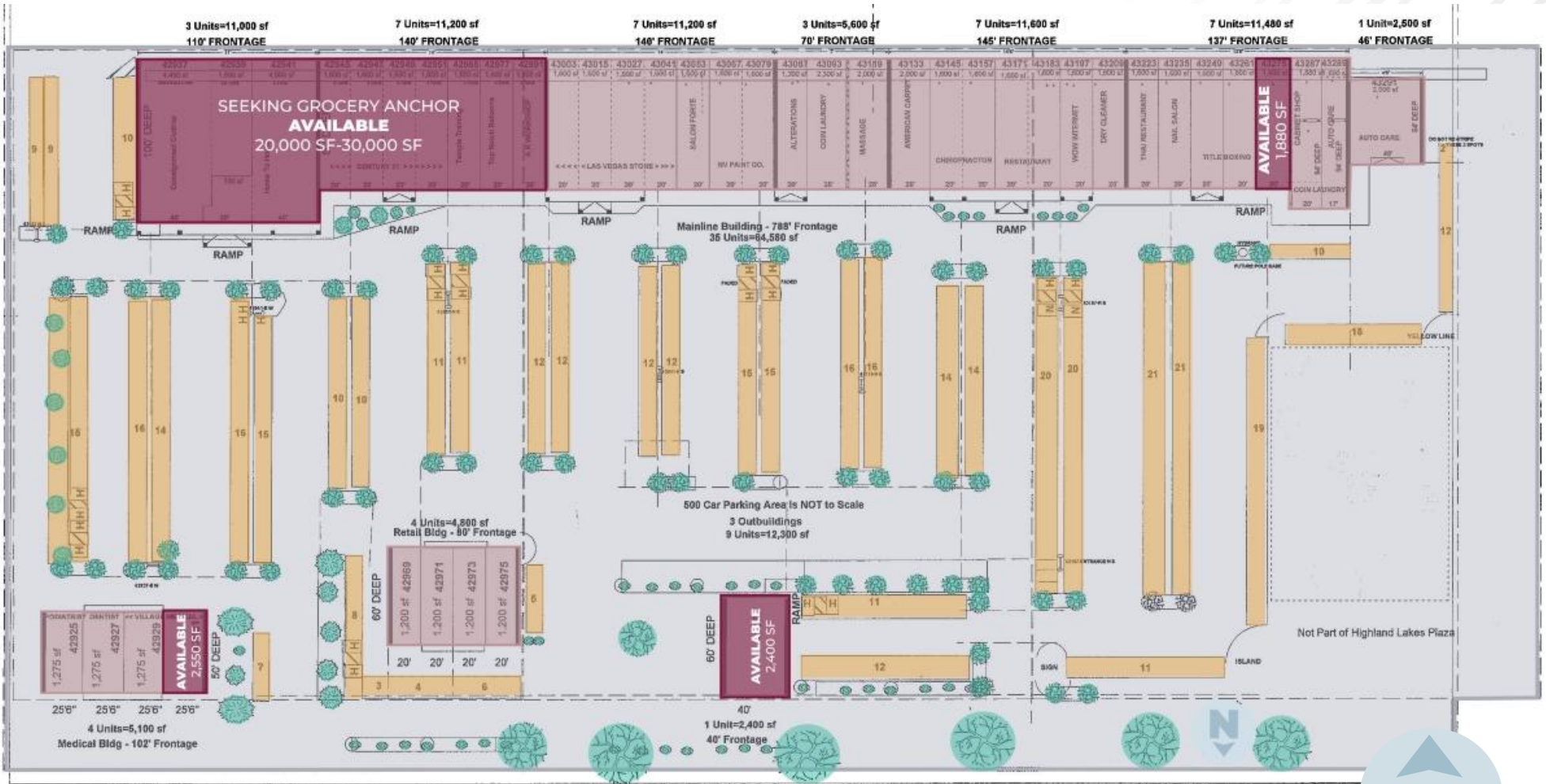
MICRO AERIAL



MACRO AERIAL



SITE PLAN



NORTHWEST VIEW



FUTURE DEVELOPMENT
 Site of Northville Downs | 400+
 Apartments, Townhomes, and
 Single Family Homes planned
 (Hunter Pasteur Homes & Toll
 Brothers)

**FORMER
 NORTHVILLE
 DOWNS**

**NORTHVILLE
 DOWNTOWN**

**S MAIN ST
 (8,064 CPD)**

**BELANGER
 JDC**

**354 STUDENTS
 SILVER
 SPRINGS ELE-
 MENTARY
 SCHOOL**

**ELLSWORTH
 LANDSCAPE
 SUPPLY**

**GRIFFIN
 L.J. GRIFFIN FUNERAL HOME, INC.**

**NORTHVILLE RD
 (9,982 CPD)**

**Thomson's
 TIRE &
 CAR WASH**

**IXL
 LEARNING**

**FARMERS
 INSURANCE**

**MASON
 PRO SERVICES**

**7 MILE RD
 (14,312 CPD)**

**SWAN
 HARBOR
 APARTMENTS
 266 UNITS**

SITE

**HIGHLAND LAKES
 SHOPPING CENTER**

SUBWAY **AAA**
 Little Caesars Pizza **(21)**
**LAS VEGAS
 STONE** **WALSH'S
 AUTO CLINIC**
TITLE BOXING
HOME TO HOME

EAST VIEW



SOUTH VIEW



DEMOGRAPHICS



HIGHLAND LAKES SHOPPING CENTER

42925-43291 7 Mile Rd, Northville, MI 48167

DEMOGRAPHICS

POPULATION

	1 MILE	3 MILE	5 MILE
2024 Estimated Population	7,979	61,323	161,386
2029 Projected Population	7,777	61,318	159,644
2020 Census Population	8,222	62,700	168,518
2010 Census Population	7,949	60,076	157,884
Projected Annual Growth 2024 to 2029	-0.5%	-	-0.2%
Historical Annual Growth 2010 to 2024	-	0.1%	0.2%

HOUSEHOLDS

2024 Estimated Households	4,117	25,991	68,352
2029 Projected Households	4,030	25,972	67,542
2020 Census Households	4,227	26,249	70,050
2010 Census Households	4,001	25,054	65,161
Projected Annual Growth 2024 to 2029	-0.4%	-	-0.2%
Historical Annual Growth 2010 to 2024	0.2%	0.3%	0.3%

RACE

2024 Est. White	73.3%	74.4%	71.7%
2024 Est. Black	8.1%	6.1%	6.9%
2024 Est. Asian or Pacific Islander	13.2%	14.9%	16.9%
2024 Est. American Indian or Alaska Native	0.1%	-	0.1%
2024 Est. Other Races	5.3%	4.6%	4.4%

INCOME

2024 Est. Average Household Income	\$148,703	\$183,144	\$166,394
2024 Est. Median Household Income	\$103,573	\$137,195	\$126,958
2024 Est. Per Capita Income	\$76,729	\$77,692	\$70,552

BUSINESS

2024 Est. Total Businesses	455	3,148	9,026
2024 Est. Total Employees	3,328	52,573	140,929

CONTACT US



**ANDREW C.
LUCKOFF**

Director

aluckoff@landmarkcres.com
248 488 2620



**ANTHONY J.
VITALE**

Director

avitale@landmarkcres.com
248 488 2620

LANDMARK
COMMERCIAL ▲ REAL ESTATE ▲ SERVICES

30500 Northwestern Hwy, Suite 200
Farmington Hills, MI 48334
248.488.2620
landmarkcres.com

LANDMARK COMMERCIAL REAL ESTATE SERVICES – Licensed Real Estate Brokers. The information above has been obtained from sources believed reliable. While we do not doubt its accuracy, we have not verified it and make no guarantee, warranty or representation about it. It is your responsibility to independently confirm its accuracy and completeness. Any projections, opinions, assumptions or estimates are used for example only and do not represent the current or future performance of the property. The value of this transaction to you depends on tax and other factors which should be evaluated by your tax, financial and legal advisors. You and your advisors should conduct a careful, independent investigation of the property to determine to your satisfaction, the suitability of the property for your needs.