

FOR LEASE

PEACHTREE CENTER

24049 MEADOWBROOK RD, NOVI, MI 48375

1,144 SF
AVAILABLE



PROPERTY DETAILS

LOCATION: 24049 Meadowbrook Rd,
Novi, MI 48375

PROPERTY TYPE: Shopping Center

DATE AVAILABLE: Immediately

RENT: \$20.00/SF NNN

NNN EXPENSES: \$5.00/SF

BUILDING SIZE: 24,949 SF

AVAILABLE SPACE: 1,144 SF

ZONING: B-1

TRAFFIC COUNT: Meadowbrook Ave (8,512 CPD)
10 Mile Rd (20,435 CPD)

EXCLUSIVELY LISTED BY:



ALESSANDRO D. BORTOLOTTI

Associate
abortolotti@landmarkres.com
248 488 2620



ELI M. NEUMAN

Associate
eneuman@landmarkres.com
248 488 2620

\$20.00/SF NNN

\$5.00/SF

RENT

NNN

HIGHLIGHTS

- Last Remaining Vacancy in this Shopping Center.
- 1,144 SF White Box Available.
- Retail, Medical, and Office Uses All Permitted.
- Ample Parking.

MICRO AERIAL



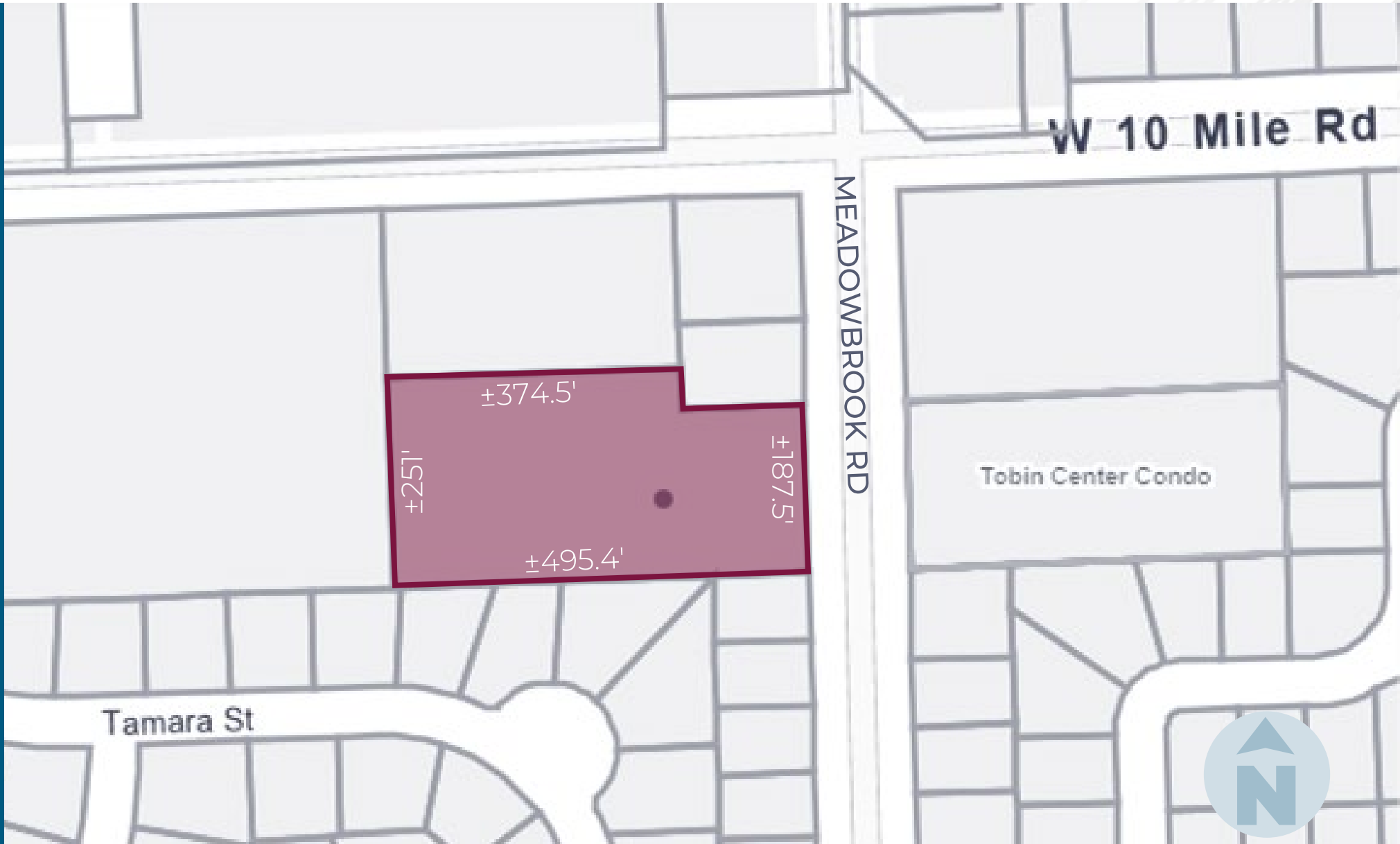
MACRO AERIAL



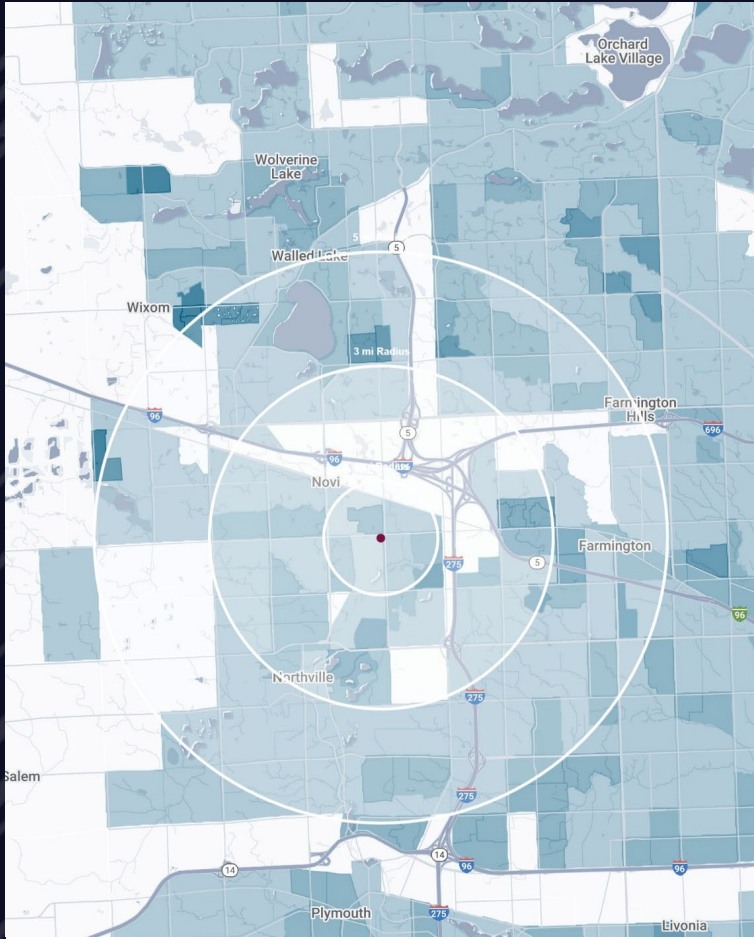
SITE PHOTO



PLAT



DEMOGRAPHICS



PEACHTREE CENTER

24049 Meadowbrook Rd, Novi, MI 48375

DEMOGRAPHICS

POPULATION	1 MILE	3 MILE	5 MILE
2024 Estimated Population	11,567	71,331	175,603
2029 Projected Population	11,372	71,102	174,609
2020 Census Population	11,242	70,590	178,090
2010 Census Population	10,567	64,591	162,069
Projected Annual Growth 2024 to 2029	-0.3%	-	-0.1%
Historical Annual Growth 2010 to 2024	0.7%	0.7%	0.6%
HOUSEHOLDS			
2024 Estimated Households	4,991	30,426	75,701
2029 Projected Households	4,905	30,280	75,086
2020 Census Households	4,868	29,774	74,993
2010 Census Households	4,584	27,268	68,015
Projected Annual Growth 2024 to 2029	-0.3%	-	-0.2%
Historical Annual Growth 2010 to 2024	0.6%	0.8%	0.8%
RACE			
2024 Est. White	56.0%	57.8%	65.9%
2024 Est. Black	9.9%	9.7%	10.0%
2024 Est. Asian or Pacific Islander	28.2%	27.7%	19.4%
2024 Est. American Indian or Alaska Native	0.1%	0.1%	0.1%
2024 Est. Other Races	5.8%	4.6%	4.6%
INCOME			
2024 Est. Average Household Income	\$128,138	\$154,886	\$156,252
2024 Est. Median Household Income	\$101,638	\$122,339	\$121,736
2024 Est. Per Capita Income	\$55,355	\$66,133	\$67,427
BUSINESS			
2024 Est. Total Businesses	576	4,340	9,206
2024 Est. Total Employees	6,818	74,080	153,075

CONTACT US



**ALESSANDRO D.
BORTOLOTTI**

Associate

abortolotti@landmarkcres.com

248 488 2620



**ELI M.
NEUMAN**

Associate

eneuman@landmarkcres.com

248 488 2620

LANDMARK
COMMERCIAL ▲ REAL ESTATE ▲ SERVICES

30500 Northwestern Hwy, Suite 200
Farmington Hills, MI 48334
248.488.2620
landmarkcres.com

LANDMARK COMMERCIAL REAL ESTATE SERVICES – Licensed Real Estate Brokers. The information above has been obtained from sources believed reliable. While we do not doubt its accuracy, we have not verified it and make no guarantee, warranty or representation about it. It is your responsibility to independently confirm its accuracy and completeness. Any projections, opinions, assumptions or estimates are used for example only and do not represent the current or future performance of the property. The value of this transaction to you depends on tax and other factors which should be evaluated by your tax, financial and legal advisors. You and your advisors should conduct a careful, independent investigation of the property to determine to your satisfaction, the suitability of the property for your needs.