

FOR LEASE

# GROSSE POINTE WOODS NEW DEVELOPMENT

20160 MACK AVE, GROSSE POINTE WOODS, MI 48236



PREMIER OPPORTUNITY

# PROPERTY DETAILS

CONTACT BROKER

\$8.00/SF

**RENT**

**NNN**

<b>LOCATION:</b>	20160 Mack Ave, Grosse Pointe Woods, MI 48236
<b>PROPERTY TYPE:</b>	Shopping Center
<b>RENT:</b>	Contact Broker
<b>NNN EXPENSE:</b>	\$8.00/SF
<b>BUILDING SIZE:</b>	11,000 SF
<b>LOT SIZE:</b>	0.80 AC
<b>AVAILABLE SPACE:</b>	From 1,250 SF to as large as 11,000 SF
<b>ZONING:</b>	Commercial
<b>TRAFFIC COUNT:</b>	Mack Avenue (25,272 CPD)

## HIGHLIGHTS

- 11,000 SF planned strip center in the heart of the Grosse Pointe Woods primary retail corridor.
- Highly visible freestanding location with unmatched exposure to the Grosse Pointe Woods main thoroughfare-Mack Avenue.
- Densely populated area with 260,000+ residents within a 5-mile radius.
- Ample dedicated parking lot which is rare for the corridor.
  - Storefront metered parking along Mack Avenue.
  - 16 additional parking spaces along S Renaud Rd without parking meters.
- Outdoor patio available.
- Ground Lease and Build-to-Suit opportunities available-Please Contact Broker.

EXCLUSIVELY LISTED BY:



**ANTHONY J. VITALE**

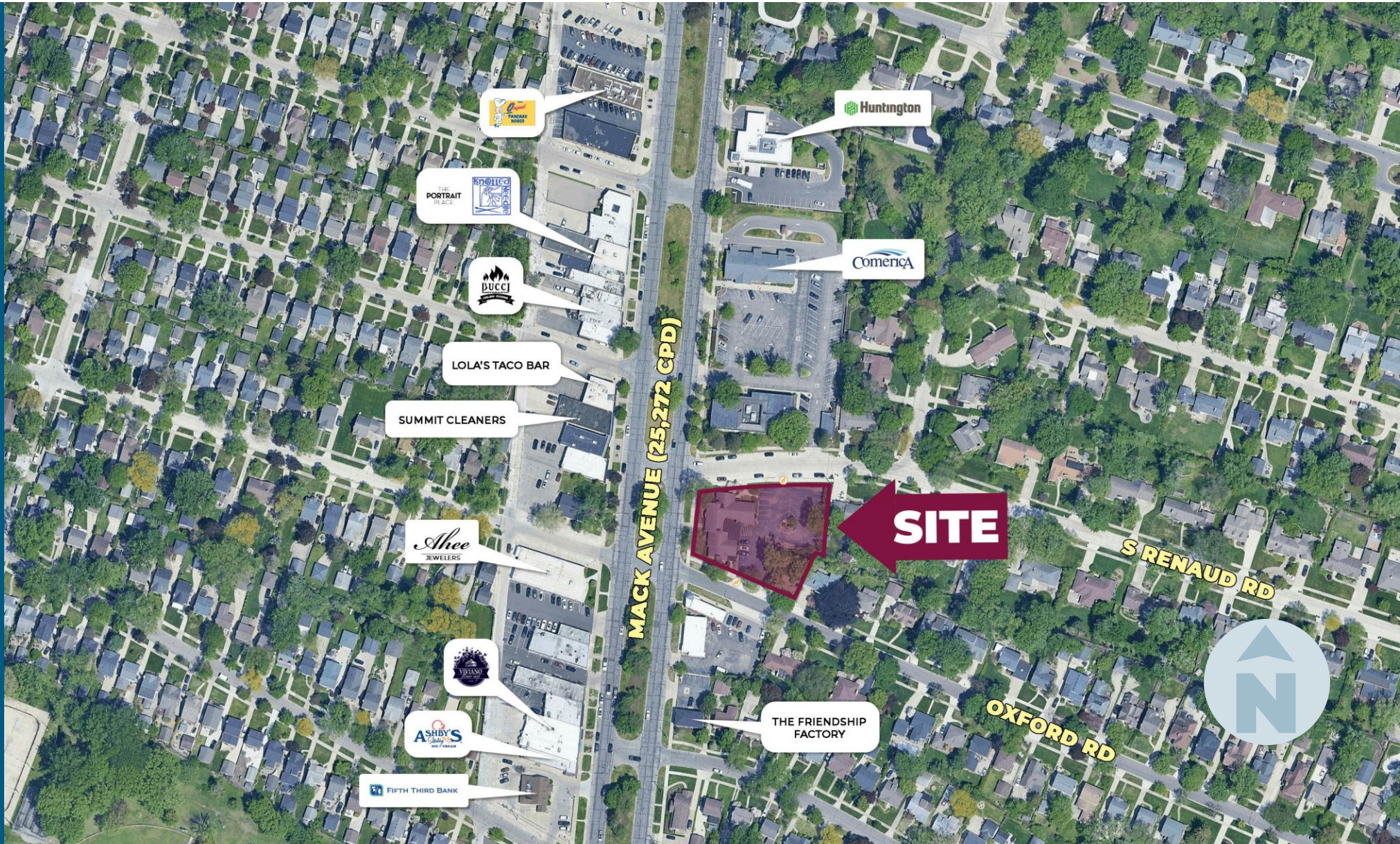
Director  
[avitale@landmarkcres.com](mailto:avitale@landmarkcres.com)  
248 488 2620



**ALESSANDRO D. BORTOLOTTI**

Associate  
[abortolotti@landmarkcres.com](mailto:abortolotti@landmarkcres.com)  
248 488 2620

# MICRO AERIAL

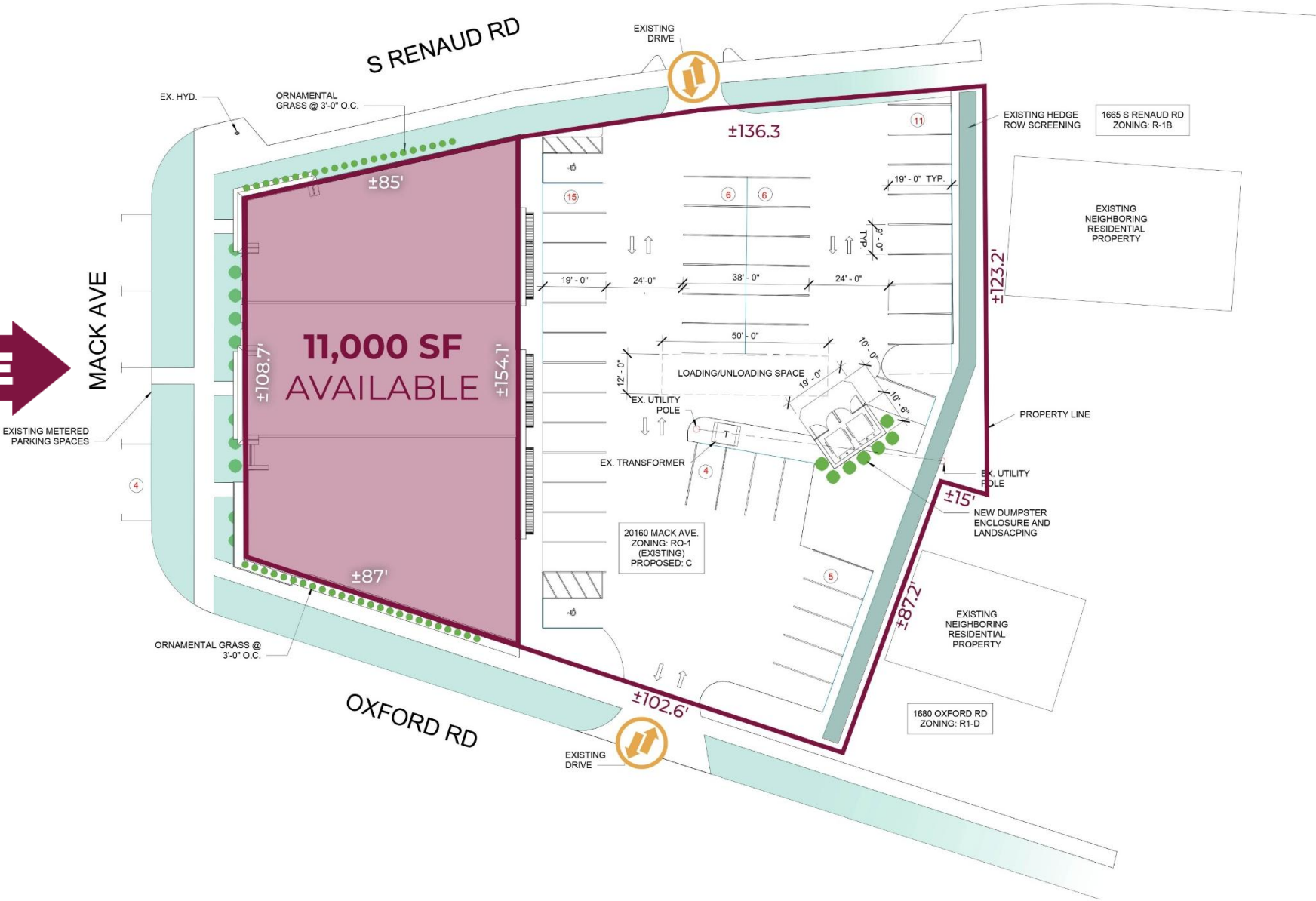


# MACRO AERIAL



# SITE PLAN

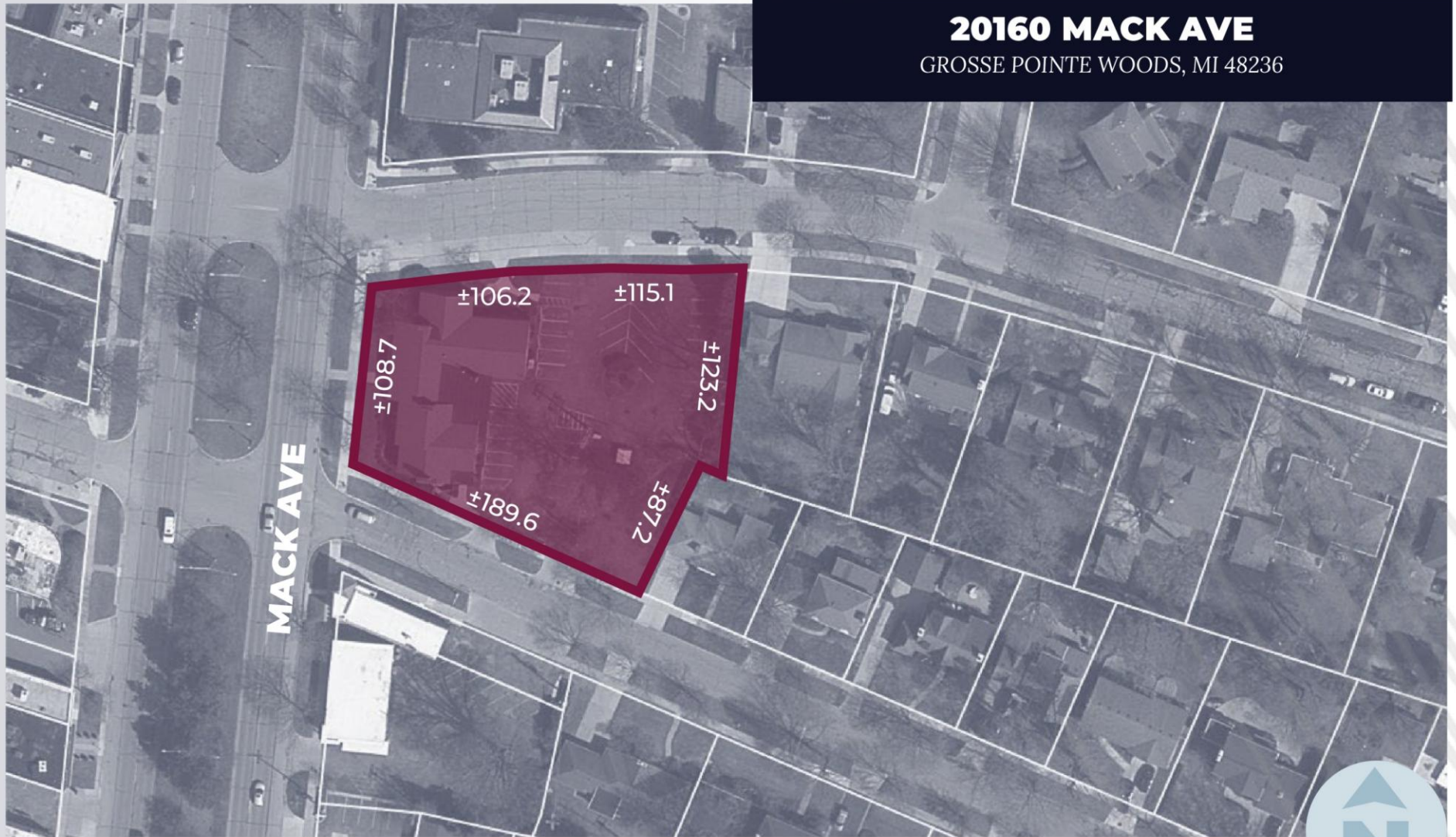
**SITE**



# PLAT

## 20160 MACK AVE

GROSSE POINTE WOODS, MI 48236



# ELEVATIONS



1 WEST ELEVATION - MACK AVE.  
1/8" = 1'-0"



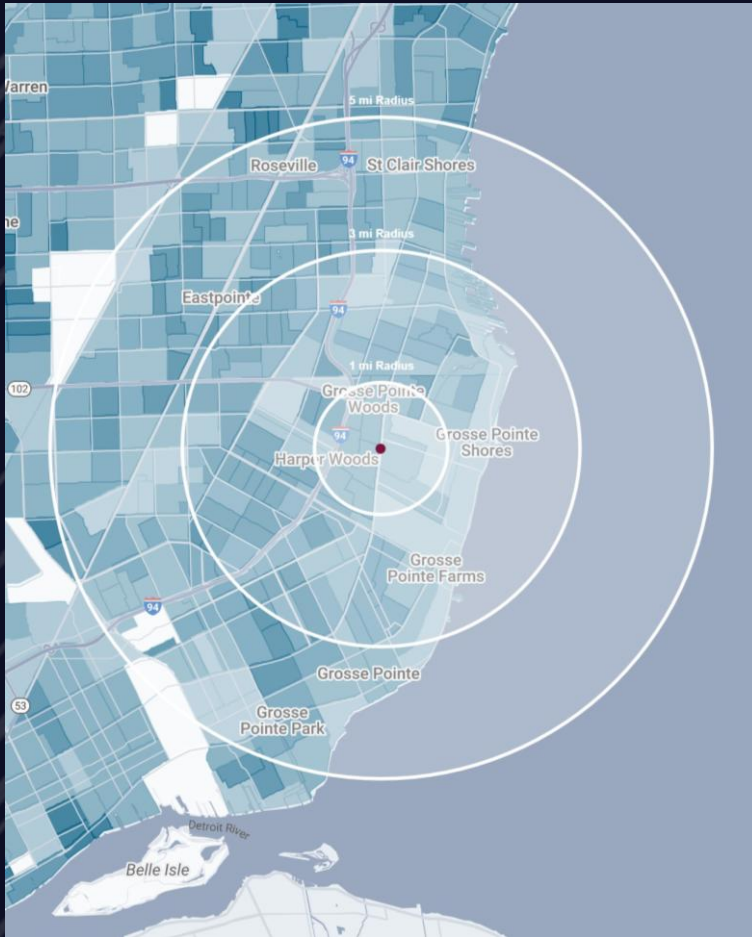
4 EAST ELEVATION - P. LOT  
1/8" = 1'-0"



3 SOUTH ELEVATION - OXFORD  
1/8" = 1'-0"

2 NORTH ELEVATION - RENAUD  
1/8" = 1'-0"

# DEMOGRAPHICS



## GROSSE POINTE WOODS NEW DEVELOPMENT

20160 Mack Ave, Grosse Pointe Woods, MI 48236

# DEMOGRAPHICS

## POPULATION

	1 MILE	3 MILE	5 MILE
2024 Estimated Population	15,724	126,374	264,306
2029 Projected Population	14,964	122,916	258,670
2020 Census Population	16,865	129,018	265,199
2010 Census Population	16,150	130,258	281,199
Projected Annual Growth 2024 to 2029	-1.0%	-0.5%	-0.4%
Historical Annual Growth 2010 to 2024	-0.2%	-0.2%	-0.4%

## HOUSEHOLDS

2024 Estimated Households	6,532	50,516	104,832
2029 Projected Households	6,209	49,223	102,850
2020 Census Households	6,901	50,692	102,689
2010 Census Households	6,649	50,533	106,265
Projected Annual Growth 2024 to 2029	-1.0%	-0.5%	-0.4%
Historical Annual Growth 2010 to 2024	-0.1%	-	-

## RACE

2024 Est. White	69.7%	48.0%	47.2%
2024 Est. Black	23.7%	46.7%	47.0%
2024 Est. Asian or Pacific Islander	2.1%	1.4%	1.6%
2024 Est. American Indian or Alaska Native	0.1%	0.1%	0.2%
2024 Est. Other Races	4.4%	3.7%	4.0%

## INCOME

2024 Est. Average Household Income	\$136,376	\$101,439	\$93,021
2024 Est. Median Household Income	\$106,094	\$76,407	\$70,416
2024 Est. Per Capita Income	\$56,790	\$40,632	\$36,979

## BUSINESS

2024 Est. Total Businesses	613	4,008	8,039
2024 Est. Total Employees	4,866	20,720	58,435



## CONTACT US



**ANTHONY J.  
VITALE**

*Director*

*avitale@landmarkcres.com*

**248 488 2620**



**ALESSANDRO D.  
BORTOLOTTI**

*Associate*

*abortolotti@landmarkcres.com*

**248 488 2620**

**LANDMARK**  
COMMERCIAL ▲ REAL ESTATE ▲ SERVICES

30500 Northwestern Hwy, Suite 200  
Farmington Hills, MI 48334  
248.488.2620  
[landmarkcres.com](http://landmarkcres.com)

LANDMARK COMMERCIAL REAL ESTATE SERVICES – Licensed Real Estate Brokers. The information above has been obtained from sources believed reliable. While we do not doubt its accuracy, we have not verified it and make no guarantee, warranty or representation about it. It is your responsibility to independently confirm its accuracy and completeness. Any projections, opinions, assumptions or estimates are used for example only and do not represent the current or future performance of the property. The value of this transaction to you depends on tax and other factors which should be evaluated by your tax, financial and legal advisors. You and your advisors should conduct a careful, independent investigation of the property to determine to your satisfaction, the suitability of the property for your needs.