

FOR LEASE

MARKET PLACE PLAZA

28841-28859 ORCHARD LAKE RD, FARMINGTON HILLS, MI



PROPERTY DETAILS

LOCATION:	28841-28859 Orchard Lake Rd, Farmington Hills, MI 48334
PROPERTY TYPE:	Shopping Center
DATE AVAILABLE:	Immediately
RENT:	\$21.00/SF NNN
NNN EXPENSES:	\$5.00/SF
BUILDING SIZE:	34,091 SF
AVAILABLE SPACE:	Unit 1: 924 SF Unit 2: 937 SF Unit 3: 1,416 SF Unit 4: 1,685 SF <i>*Can be combined to 4,038 SF</i>
ZONING:	B-3
TRAFFIC COUNT:	Orchard Lake Rd (32,278 CPD) 13 Mile Rd (14,851 CPD)

EXCLUSIVELY LISTED BY:



**ALESSANDRO D.
BORTOLOTTI**

Associate
abortolotti@landmarkcres.com
248 488 2620



**ELI M.
NEUMAN**

Associate
eneuman@landmarkcres.com
248 488 2620

\$21.00/SF NNN

RENT

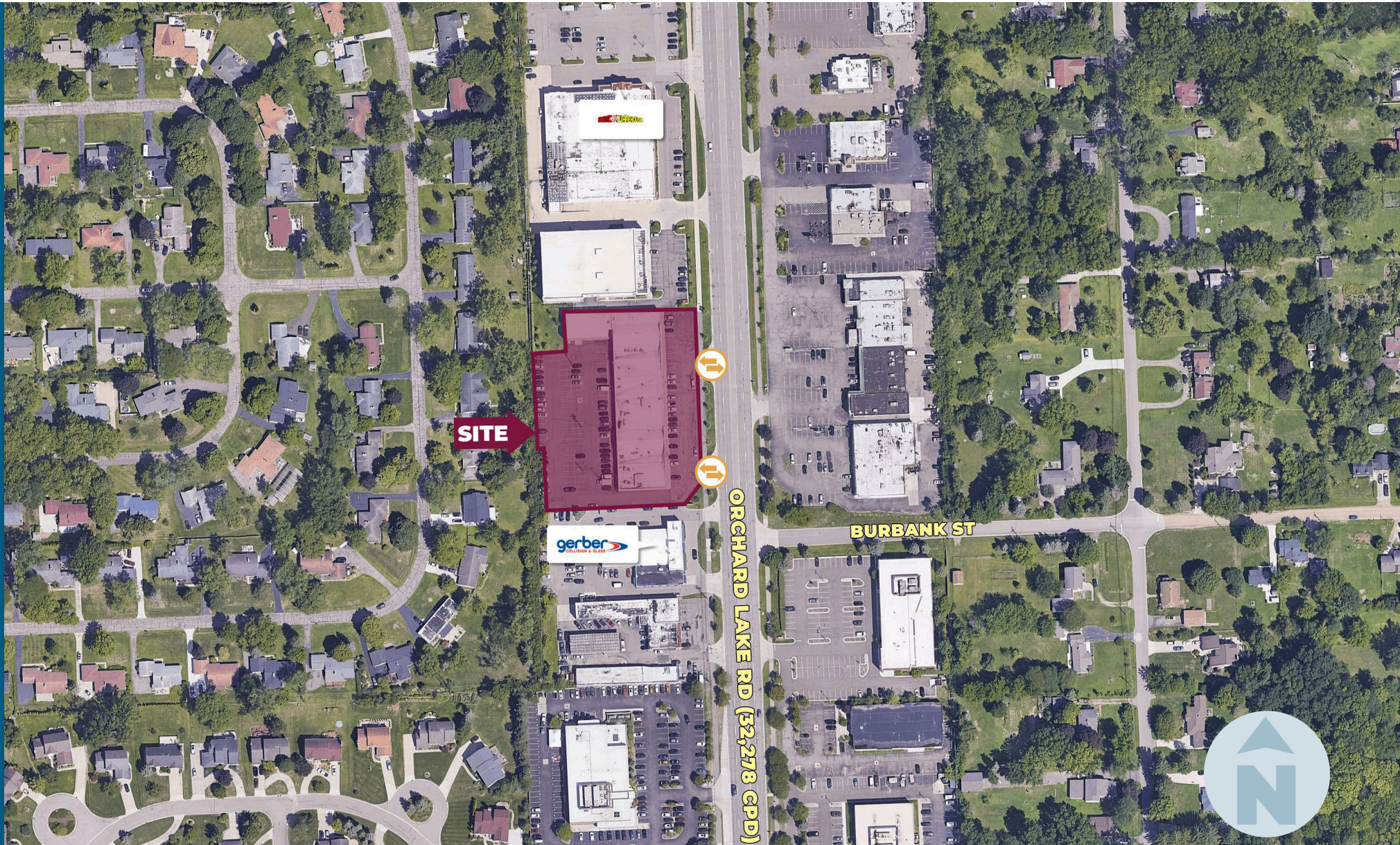
\$5.00/SF

NNN

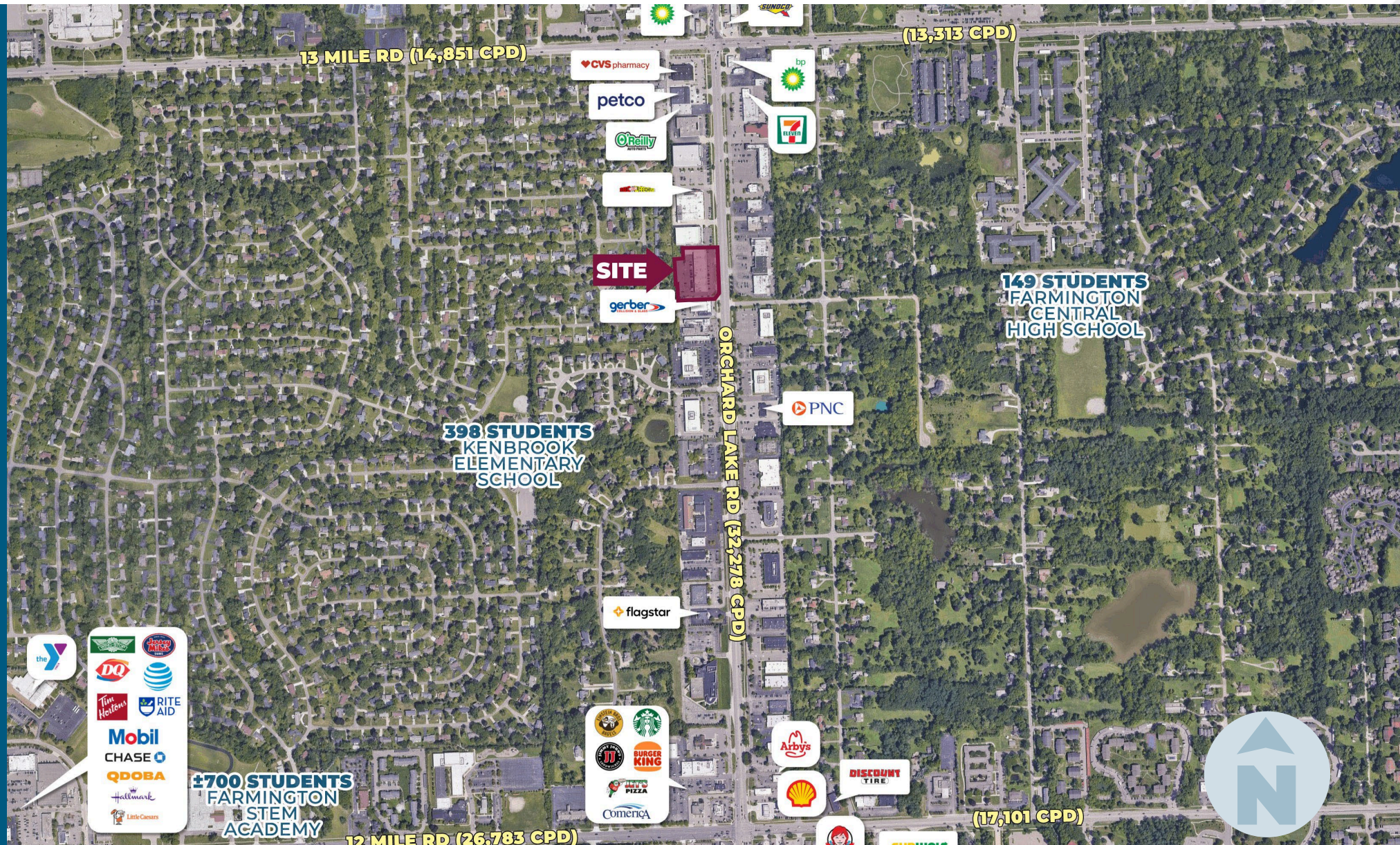
HIGHLIGHTS

- Join Dozens of National Retailers on the Busy Orchard Lake Rd.
- 4 Units Available For Lease.
- Large Parking Lot that can Accommodate over 130 Cars.

MICRO AERIAL



MACRO AERIAL



SITE PHOTO



SITE PHOTO



PLAT

\$21.00/SF NNN

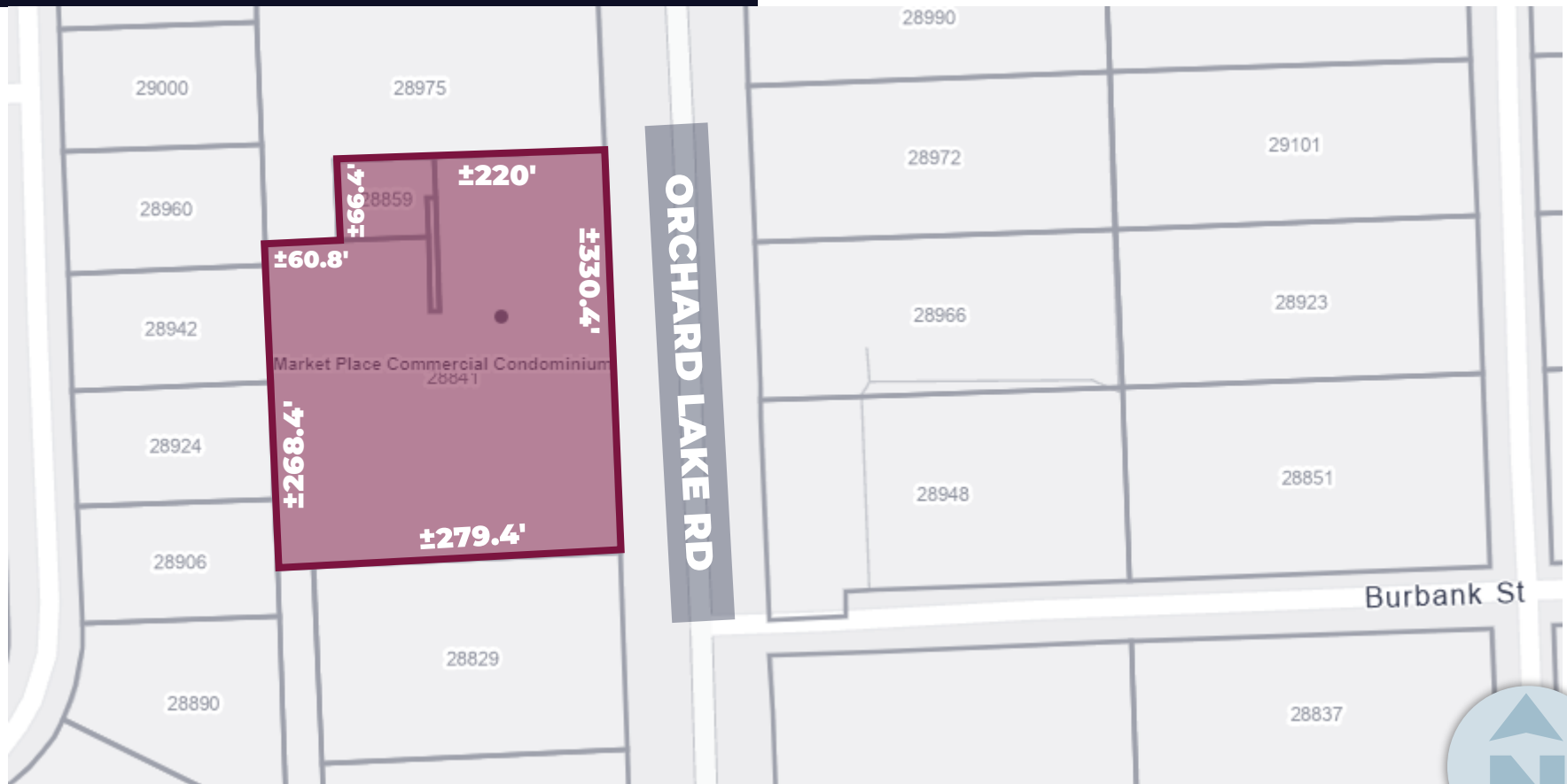
924 SF – 1,685 SF

RENT

AVAILABLE SPACE

MARKET PLACE PLAZA

28841-28859 Orchard Lake Rd, Farmington Hills, MI 48334



MARKET PLACE PLAZA

28841-28859 Orchard Lake Rd, Farmington Hills,
MI 48334

CONTACT US

AB

ALESSANDRO D. BORTOLOTTI

Associate

abortolotti@landmarkcres.com

248 488 2620

EN

ELI M. NEUMAN

Associate

eneuman@landmarkcres.com

248 488 2620

LANDMARK
COMMERCIAL ▲ REAL ESTATE ▲ SERVICES

30500 Northwestern Hwy, Suite 200
Farmington Hills, MI 48334
248.488.2620
landmarkcres.com

LANDMARK COMMERCIAL REAL ESTATE SERVICES – Licensed Real Estate Brokers. The information above has been obtained from sources believed reliable. While we do not doubt its accuracy, we have not verified it and make no guarantee, warranty or representation about it. It is your responsibility to independently confirm its accuracy and completeness. Any projections, opinions, assumptions or estimates are used for example only and do not represent the current or future performance of the property. The value of this transaction to you depends on tax and other factors which should be evaluated by your tax, financial and legal advisors. You and your advisors should conduct a careful, independent investigation of the property to determine to your satisfaction, the suitability of the property for your needs.