

FOR SALE

1.50 AC – RED ROBIN EXCESS LAND

3003 COMMERCE CROSSING RD, COMMERCE CHARTER TWP, MI 48390



PROPERTY DETAILS

\$495,000.00

1.50 AC

SALES PRICE

LOT SIZE

LOCATION: 3003 Commerce Crossing Rd,
Commerce Twp, MI 48390

PROPERTY TYPE: Vacant Land

DATE AVAILABLE: Immediately

SALES PRICE: \$495,000.00

PROPERTY TAXES: Contact Broker

LOT SIZE: 1.50 AC

ZONING: B-2

TRAFFIC COUNT: M-5 (45,087 CPD)
Haggerty Rd (13,127 CPD)

EXCLUSIVELY LISTED BY:



**MATTHEW D.
SWANTKO**

Principal
mswantko@landmarkcres.com
248 488 2620



**ANTHONY J.
VITALE**

Director
avitale@landmarkcres.com
248 488 2620

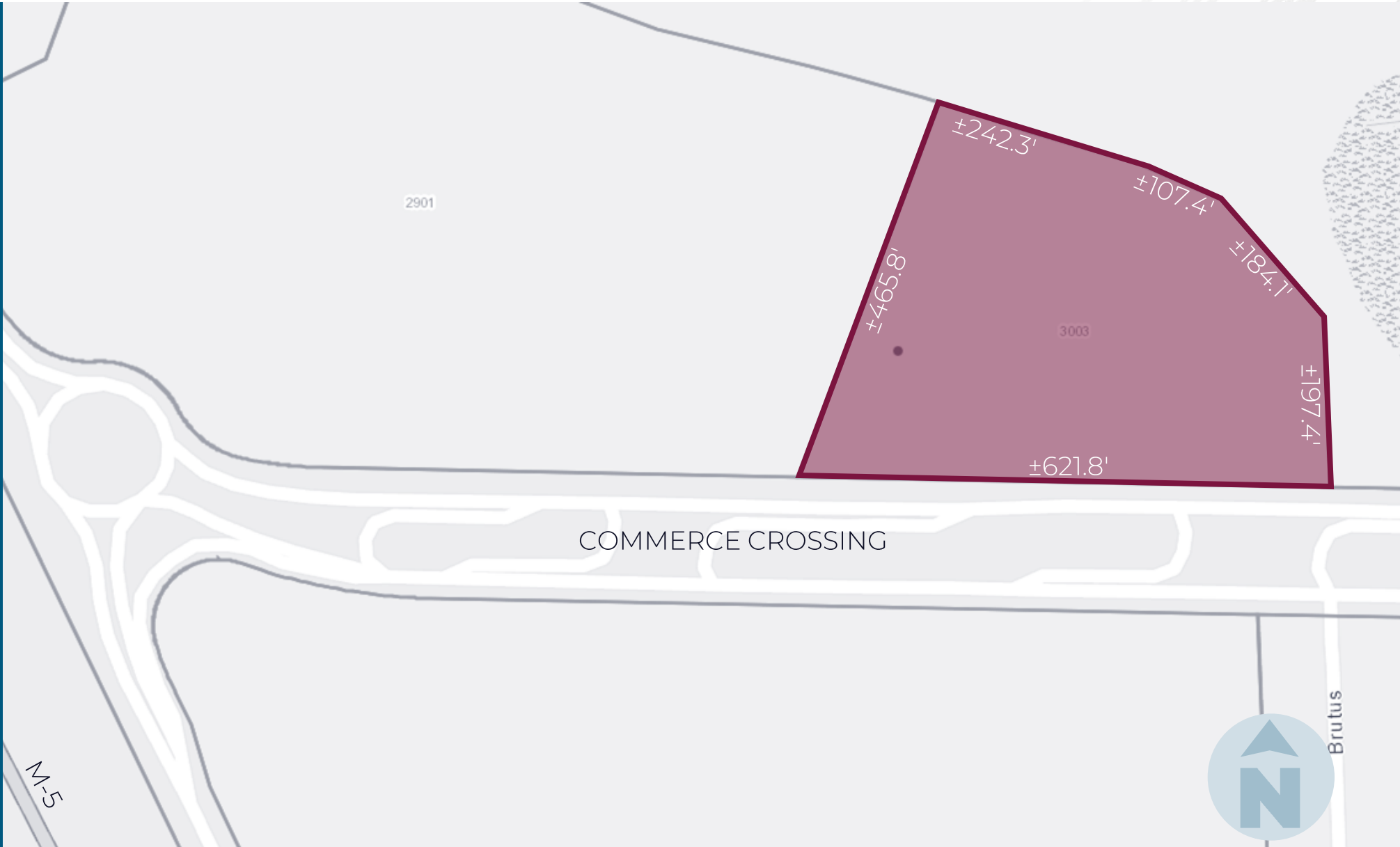
HIGHLIGHTS

- Excess Land of 1.50 AC Adjacent to Red Robin Restaurant.
- The Site is Development Ready with Many Possible Uses.
- Situated within the Commerce Crossing Master Development.
- Anchored by Costco, Lifetime Fitness, Target, and Home Depot.
- Sale, Ground Lease, or Build to Suit Available.

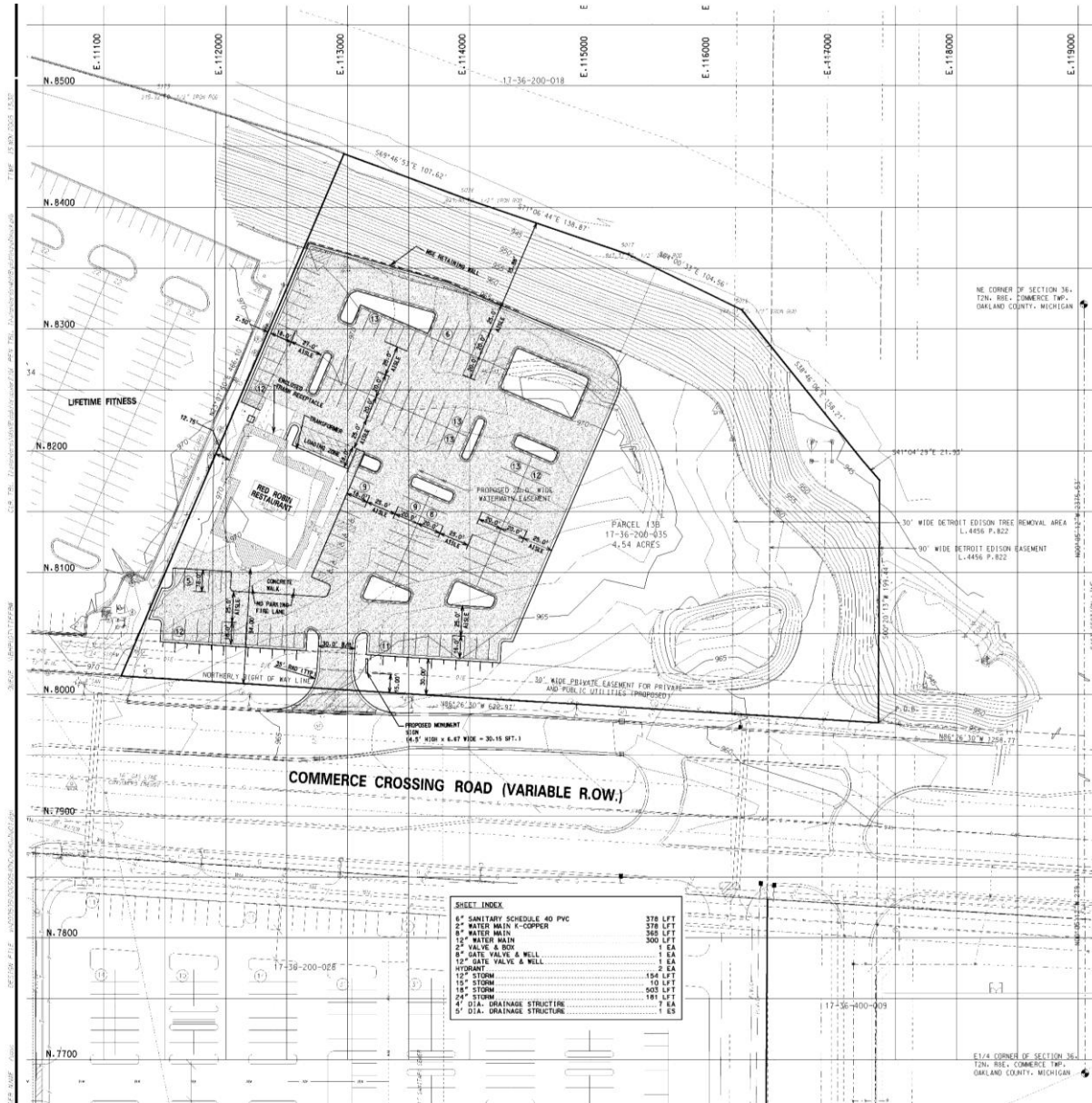
MICRO AERIAL



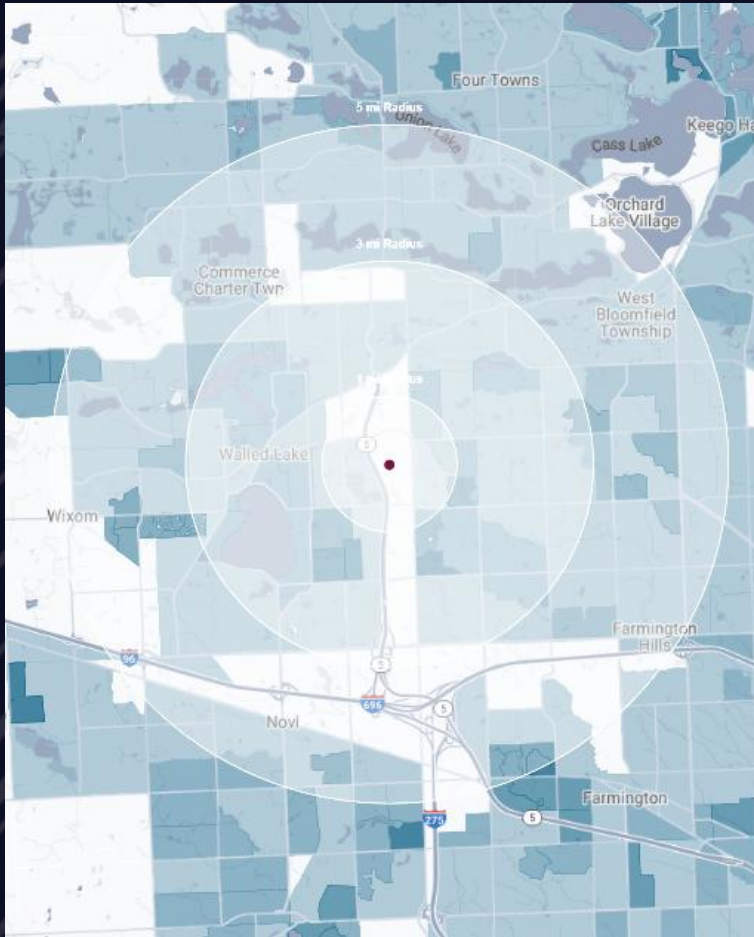
PLAT



SURVEY



DEMOGRAPHICS



1.50 AC – RED ROBIN EXCESS LAND

3003 Commerce Crossing, Commerce Charter Twp, MI

DEMOGRAPHICS

POPULATION

	1 MILE	3 MILE	5 MILE
2023 Estimated Population	6,325	68,163	167,607
2028 Projected Population	7,817	75,306	175,997
2020 Census Population	5,360	65,900	167,655
2010 Census Population	5,060	60,200	153,084
Projected Annual Growth 2023 to 2028	4.7%	2.1%	1.0%
Historical Annual Growth 2010 to 2023	1.9%	1.0%	0.7%

HOUSEHOLDS

2023 Estimated Households	2,933	30,189	74,464
2028 Projected Households	3,639	33,438	78,165
2020 Census Households	2,294	27,527	70,477
2010 Census Households	2,162	24,567	62,371
Projected Annual Growth 2023 to 2028	4.8%	2.2%	1.0%
Historical Annual Growth 2010 to 2023	2.7%	1.8%	1.5%

RACE

2023 Est. White	68.1%	71.9%	69.8%
2023 Est. Black	15.4%	11.7%	12.2%
2023 Est. Asian or Pacific Islander	13.1%	11.9%	13.3%
2023 Est. American Indian or Alaska Native	0.1%	0.1%	0.1%
2023 Est. Other Races	3.3%	4.3%	4.6%

INCOME

2023 Est. Average Household Income	\$118,413	\$129,347	\$139,217
2023 Est. Median Household Income	\$90,955	\$105,670	\$109,010
2023 Est. Per Capita Income	\$54,925	\$57,348	\$61,947

BUSINESS

2023 Est. Total Businesses	385	2,686	9,435
2023 Est. Total Employees	2,633	38,679	134,122

CONTACT US



**MATTHEW D.
SWANTKO**

Principal

mswantko@landmarkcres.com

248 488 2620



**ANTHONY J.
VITALE**

Director

avitale@landmarkcres.com

248 488 2620

LANDMARK
COMMERCIAL ▲ REAL ESTATE ▲ SERVICES

30500 Northwestern Hwy, Suite 200
Farmington Hills, MI 48334
248.488.2620
landmarkcres.com

LANDMARK COMMERCIAL REAL ESTATE SERVICES – Licensed Real Estate Brokers. The information above has been obtained from sources believed reliable. While we do not doubt its accuracy, we have not verified it and make no guarantee, warranty or representation about it. It is your responsibility to independently confirm its accuracy and completeness. Any projections, opinions, assumptions or estimates are used for example only and do not represent the current or future performance of the property. The value of this transaction to you depends on tax and other factors which should be evaluated by your tax, financial and legal advisors. You and your advisors should conduct a careful, independent investigation of the property to determine to your satisfaction, the suitability of the property for your needs.