

FOR LEASE

GREATER MACK MEDICAL/ PROFESSIONAL OFFICES

24001 GREATER MACK AVE, ST CLAIR SHORES, MI 48080



PROPERTY DETAILS

6,708 SF

\$15.00/SF (Gross + Utilities)

BUILDING SIZE

RENT

LOCATION:	24001 Greater Mack Ave, St Clair Shores, MI 48080	
PROPERTY TYPE:	Freestanding	
RENT:	\$15.00/SF (Gross + Utilities)	
BUILDING SIZE:	6,708 SF	
LOT SIZE:	0.49 AC	
LOT DIMENSIONS:	±116' x ±185'	
AVAILABLE SPACE:	Suite 1	1,650 SF
	Suite 2	1,650 SF
ZONING:	B-3	
IMPROVEMENTS:	Building Renovations Underway	
TRAFFIC COUNT:	Greater Mack Ave (7,642 CPD) E 9 Mile Rd (21,391 CPD)	

HIGHLIGHTS

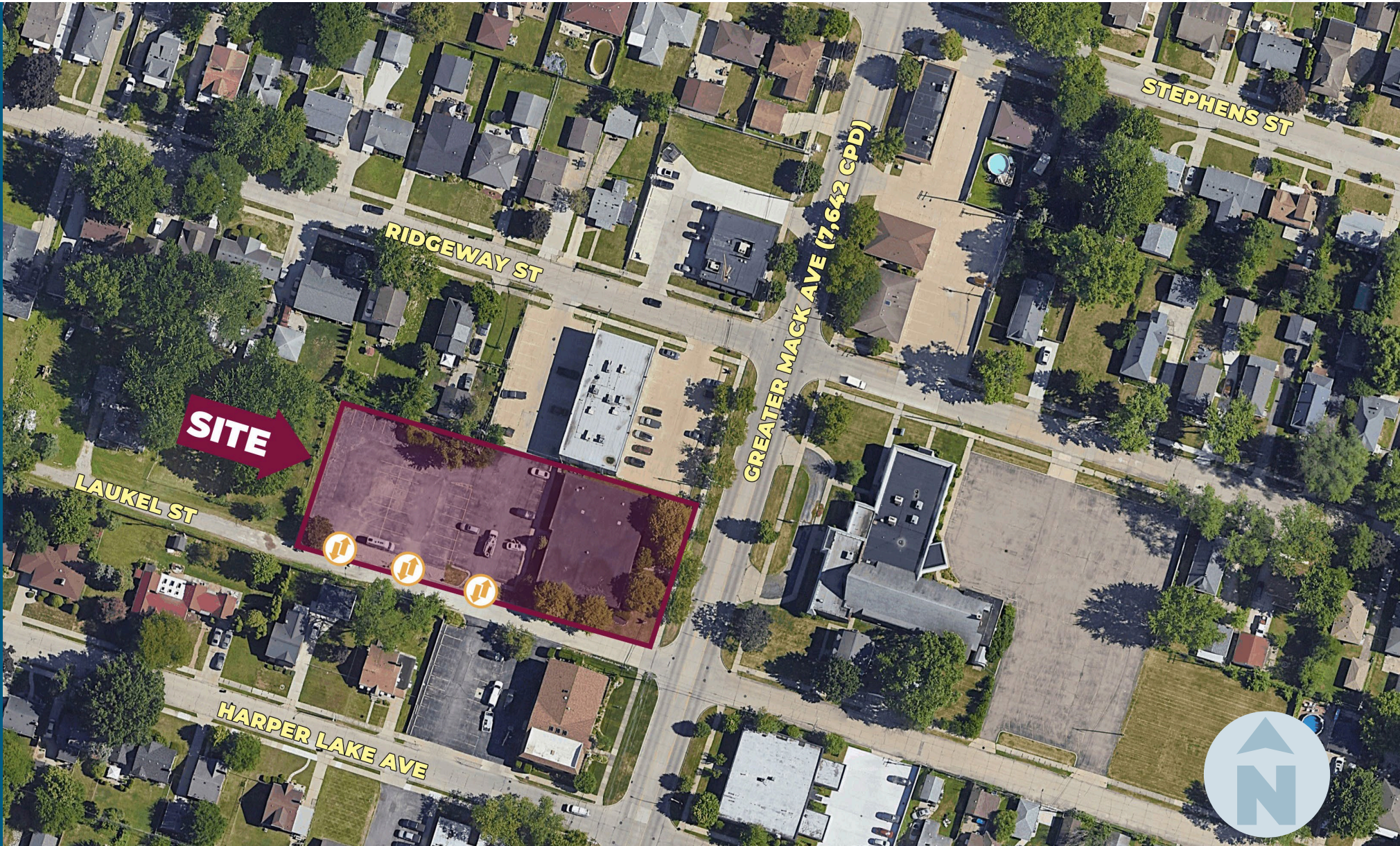
- Prime Greater Mack Avenue location in St Clair Shores
- Located within a well-established commercial corridor
- On-site parking for employees and clients
- Ideal for professional, medical, or service based office use
- Easy access from major roads and surrounding neighborhoods
- New exterior & interior building renovations

EXCLUSIVELY LISTED BY:

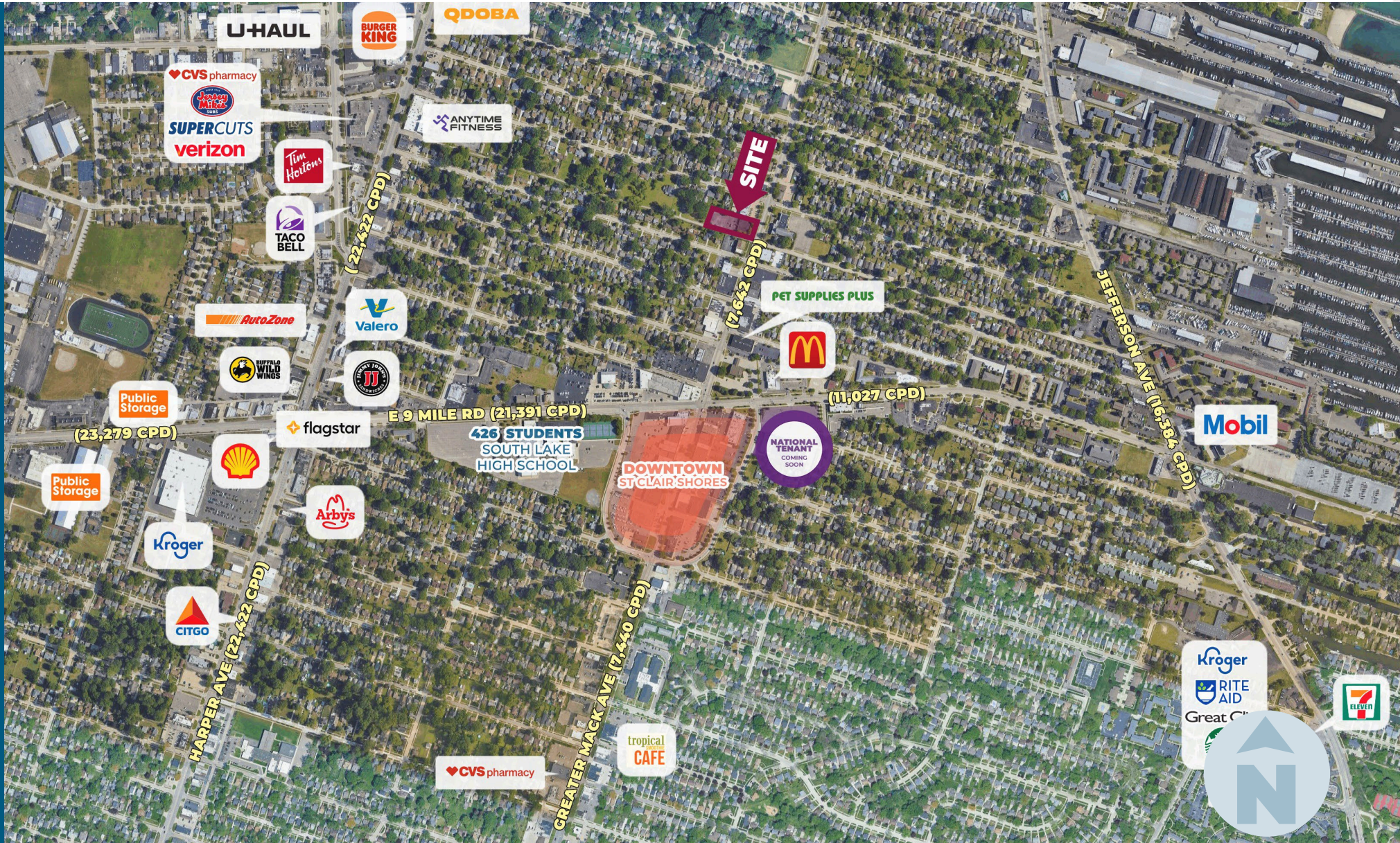


ANTHONY J. VITALE
Director
avitale@landmarkcres.com
248 488 2620

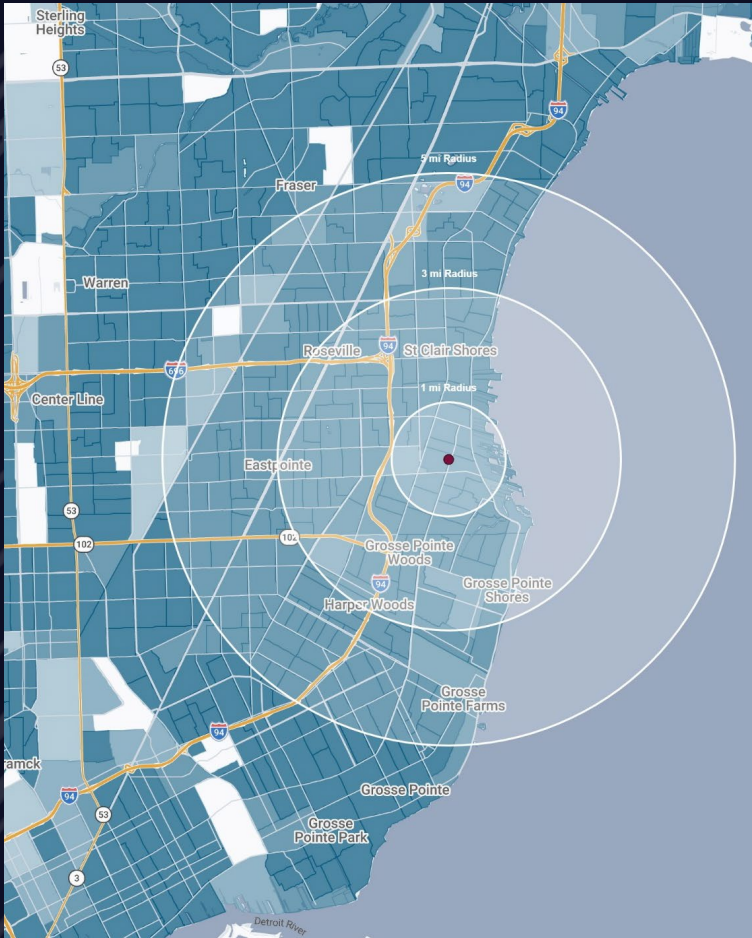
MICRO AERIAL



MACRO AERIAL



DEMOGRAPHICS



GREATER MACK MEDICAL/ PROFESSIONAL OFFICES

24001 Greater Mack Ave, St Clair Shores, MI

DEMOGRAPHICS

POPULATION	1 MILE	3 MILE	5 MILE
2025 Estimated Population	14,452	104,635	251,554
2030 Projected Population	14,274	102,437	246,529
2020 Census Population	14,463	105,931	253,757
2010 Census Population	14,925	105,123	255,376
Projected Annual Growth 2025 to 2030	-0.2%	-0.4%	-0.4%
Historical Annual Growth 2010 to 2025	-0.2%	-	-
HOUSEHOLDS			
2025 Estimated Households	7,125	44,972	103,566
2030 Projected Households	7,179	44,810	103,274
2020 Census Households	7,005	45,012	102,751
2010 Census Households	6,936	43,927	101,551
Projected Annual Growth 2025 to 2030	0.2%	-	-
Historical Annual Growth 2010 to 2025	0.2%	0.2%	0.1%
RACE			
2025 Est. White	81.3%	69.2%	59.1%
2025 Est. Black	10.9%	23.7%	33.9%
2025 Est. Asian or Pacific Islander	2.5%	2.3%	2.4%
2025 Est. American Indian or Alaska Native	0.2%	0.2%	0.2%
2025 Est. Other Races	5.1%	4.8%	4.5%
INCOME			
2025 Est. Average Household Income	\$92,366	\$99,605	\$92,382
2025 Est. Median Household Income	\$74,986	\$79,137	\$72,897
2025 Est. Per Capita Income	\$45,633	\$42,874	\$38,116
BUSINESS			
2025 Est. Total Businesses	862	3,672	8,173
2025 Est. Total Employees	6,954	27,047	67,221

CONTACT US



**ANTHONY J.
VITALE**

Director

avitale@landmarkcres.com

248 488 2620

LANDMARK
COMMERCIAL ▲ REAL ESTATE ▲ SERVICES

30500 Northwestern Hwy, Suite 200
Farmington Hills, MI 48334
248.488.2620
landmarkcres.com

LANDMARK COMMERCIAL REAL ESTATE SERVICES – Licensed Real Estate Brokers. The information above has been obtained from sources believed reliable. While we do not doubt its accuracy, we have not verified it and make no guarantee, warranty or representation about it. It is your responsibility to independently confirm its accuracy and completeness. Any projections, opinions, assumptions or estimates are used for example only and do not represent the current or future performance of the property. The value of this transaction to you depends on tax and other factors which should be evaluated by your tax, financial and legal advisors. You and your advisors should conduct a careful, independent investigation of the property to determine to your satisfaction, the suitability of the property for your needs.